



# Natusus

## Daily Trading Plan Dec. 24, 2015

### 1. PREVIOUS DAY (ESH6)

Open	High	Low	Closing
RTH 2042.50	2057.75	2041.75	2053.00
GBX 2034.50	2057.75	2030.75	2053.00

### 2. PIVOTS

	Daily RTH and GBX	Weekly	Monthly	Yearly
R3	2076.00	2138.25	2239.00	2540.25
R2	2067.00	2105.50	2174.75	2314.50
R1	2060.00	2048.75	2127.25	2183.50
<b>PPT</b>	<b>2051.00</b>	<b>2016.00</b>	<b>2062.75</b>	<b>1957.75</b>
S1	2043.75	1959.25	2015.25	1826.75
S2	2034.75	1926.50	1951.00	1601.00
S3	2027.75	1869.75	1903.50	1470.00

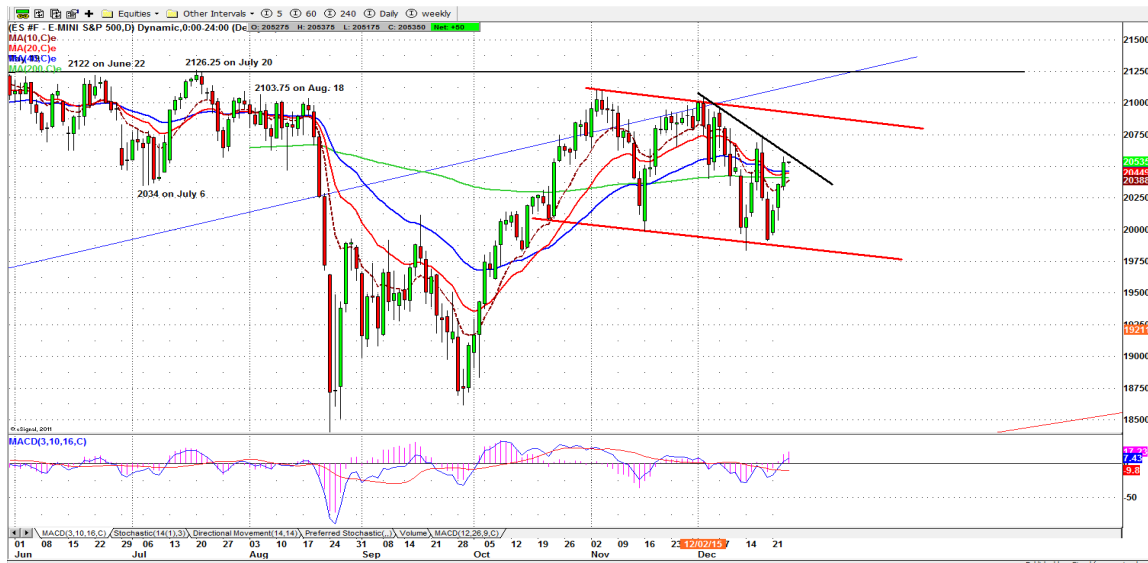
### 3. FOCUS NUMBERS

	Daily	Weekly
<b>2<sup>nd</sup> Sell level</b>	<b>2072.75-2073.50</b>	<b>2066.50-2068.50</b>
<b>1<sup>st</sup> Sell level</b>	<b>2067.50-2065.50</b>	<b>2039.50-2037.50</b>
<b>Key #</b>	<b>2058.00-2059.50</b>	<b>1992.00-1991.00</b>
<b>1<sup>st</sup> Buy level</b>	<b>2039.50-2040.50</b>	<b>1952.50-1951.50</b>
<b>2<sup>nd</sup> Buy level</b>	<b>2030.50-2031.25</b>	<b>1916.50-1914.50</b>

The key # is a control point for up or down moves. When price moves from one side of that line to the other and stays in the new range it often indicates a change in trend and the beginning of a stop run. Look for the price to move toward new support and resistance levels, often at/near our buy or sell range. For more information visit [www.natusus.com](http://www.natusus.com)

## 4. DAILY OUTLOOK – S&P 500 MINI FUTURES (ES)

### ESH6 Daily Chart



ES broke three momentum resistance lines and closed above them yesterday with even less volume. Today the ultra-short-term downtrend line at 2062 will be first line to watch. We want to see if ES can move through it and close above it.

A failure to break above it, but instead closing under the 2035.50 line today will indicate the holiday bounce will end soon. But a move above it and a close above it indicates that ES could continue to move up in the following week. Most activities will show in the early session. The NYSE will close at 1pm.

And as always, we wish our members a very Merry Christmas and a happy and prosperous New Year.

Major support levels: 1982.50-80.50, 1975.50-72.75, 1950-56.50,  
Major resistance levels: 2062.50-64, 2072.50-75, 2085-86.50



## Murrey Math Line Movement \*

(Caution. Know MMLine rule before you trade these numbers.)

Prior Move	1.95	Up Move	3.91	Down Move	3.91
2058.59	+2/8	2085.94	+2/8	2070.31	+2/8
2056.64	+1/8	2082.03	+1/8	2066.41	+1/8
<b>2054.69</b>	<b>8/8</b>	<b>2078.13</b>	<b>8/8</b>	<b>2062.50</b>	<b>8/8</b>
<b>2052.73</b>	<b>7/8</b>	<b>2074.22</b>	<b>7/8</b>	<b>2058.59</b>	<b>7/8</b>
2050.78	6/8	2070.31	6/8	2054.69	6/8
2048.83	5/8	2066.41	5/8	2050.78	5/8
2046.88	4/8	2062.50	4/8	2046.88	4/8
2044.92	3/8	2058.59	3/8	2042.97	3/8
2042.97	2/8	2054.69	2/8	2039.06	2/8
2041.02	1/8	2050.78	1/8	2035.16	1/8
2039.06	0/8	2046.88	0/8	2031.25	0/8
2037.11	-1/8	2042.97	-1/8	2027.34	-1/8
2035.16	-2/8	2039.06	-2/8	2023.44	-2/8