



Daily Trading Plan for May 13, 2009

1. ESM9 IN PREVIOUS DAY

Open	High	Low	Closing
912.00	913.50	894.00	906.75

2. PIVOTS FOR ESM9

	Daily	Weekly	Monthly	Yearly
R3	935.00	990.75	1017.58	2082.17
R2	924.25	959.25	951.67	1781.33
R1	915.50	942.00	910.83	1340.67
PPT	904.75	910.50	844.92	1039.83
S1	896.00	893.25	804.08	599.17
S2	885.25	861.75	738.17	448.75
S3	876.50	844.50	697.33	298.33

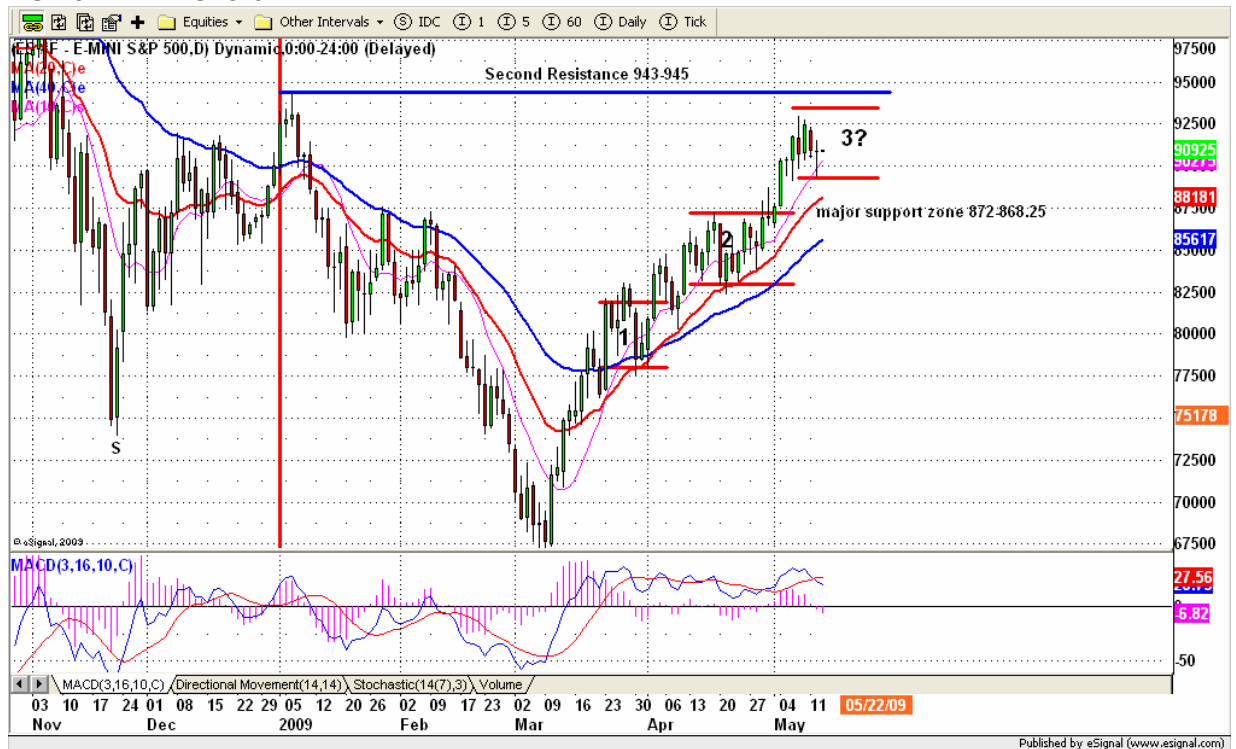
3. FOCUS NUMBERS

	Daily	Weekly
1st Sell level	916.75-918.00 900-898	945.75-947.00
2nd Sell level	926.50-928.00 909.75-912.	974.00-978.25
1st Buy level	895.00-893.75 890-889	880.25-875.50
2nd Buy level	884.25-885.25 875-876	866.00-862.25

4. DAILY OUTLOOK

Early morning ES tested the 9-EMA (on the daily chart). It went down first and reversed up sharply after 12:30pm. Today we may see ES attempt to move higher if 900-898 range can hold up firmly. But there is a major key range 916.25-918 ahead of the current price. A move above this key range will be bullish. A further high to 928-927 area should be expected. On a failure to move above it, we may see the price pull back to challenge the 9EMA (daily) again.

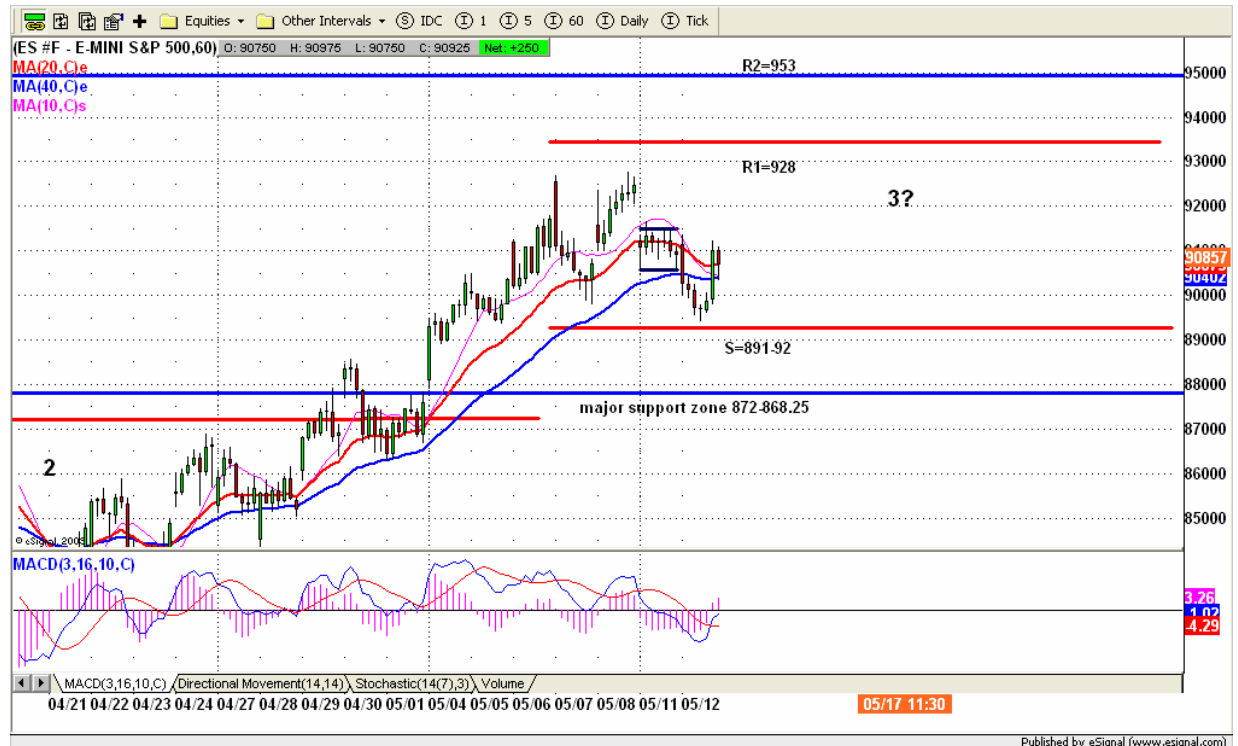
ESM9 DAILY Chart



5. TRADING STRATEGY FOR May 13, 2009

There is a horizontal channel on 60 minute chart. Sideway for consolidation inside this channel is very likely if ES can hold 900-898 line up. If retail report is good in the morning, today could be an up day to retest Monday's high area 916-918 or higher until later afternoon for pullback. If retail report is not good, we may see ES to pull back to retest yesterday's low. No matter how low the price goes, we still look for major support level to go long.

ESM9 INTRADAY



INTRADAY SCALPING NUMBERS

	Very Aggressive	Aggressive	Conservative
Sell level	916.25-918.00	927.75-928.00	935.75-932.50
Buy level	896.00-895.25	884.75-885.75	875.00-876.00

6. PREDICTION FOR TODAY'S MOVEMENT

Current (interval=3.91)

914.06	+2/8
910.16	+1/8
906.25	8/8
902.34	7/8
898.44	6/8
894.53	5/8
890.63	4/8
886.72	3/8
882.81	2/8
878.91	1/8
875.00	0/8
871.09	-1/8
867.19	-2/8

Up (Interval=3.91)

945.31	+2/8
941.41	+1/8
937.50	8/8
933.59	7/8
929.69	6/8
925.78	5/8
921.88	4/8
917.97	3/8
914.06	2/8
910.16	1/8
906.25	0/8
902.34	-1/8
898.44	-2/8

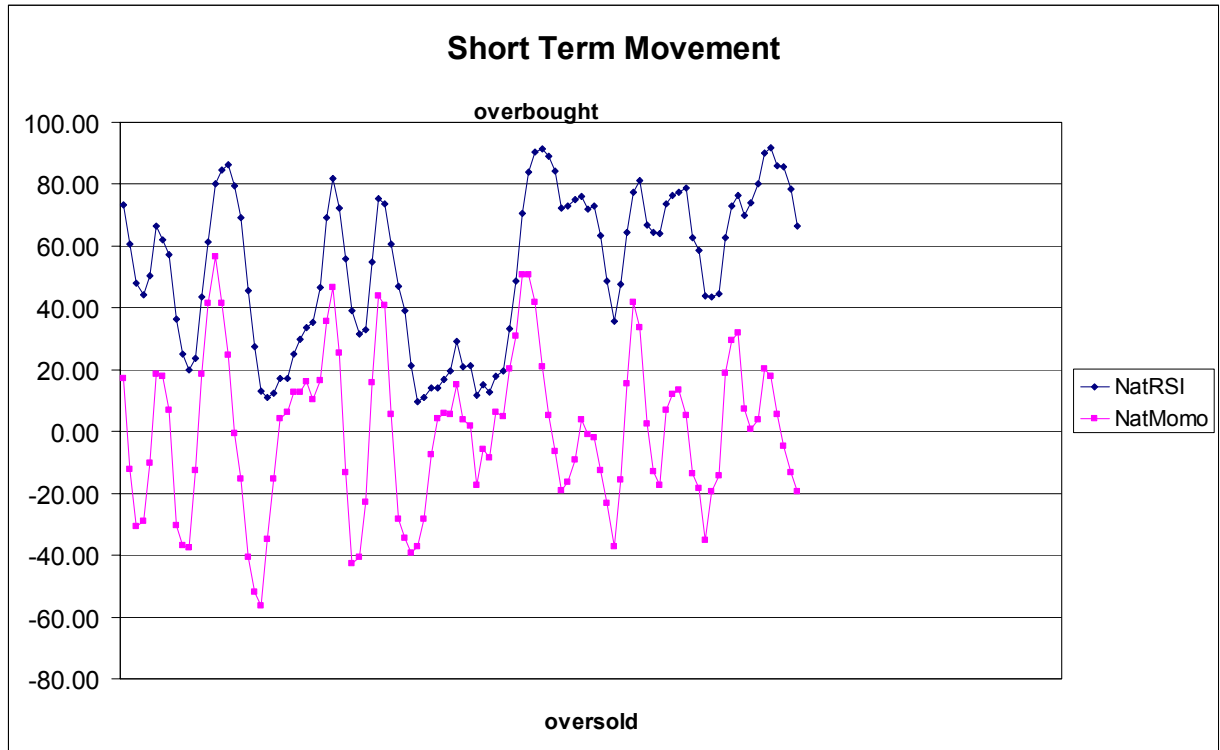
Down (Interval=3.91)

929.69	+2/8
925.78	+1/8
921.88	8/8
917.97	7/8
914.06	6/8
910.16	5/8
906.25	4/8
902.34	3/8
898.44	2/8
894.53	1/8
890.63	0/8
886.72	-1/8
882.81	-2/8

7. OVERNIGHT CALL

	1 st Sell level	2 nd Sell level
	915.75-918.00	921.75-923.50
Central line	907.50	
	899.50-900.00	894.25-891.50
	1 st Buy level	2 nd Buy level

8. SHORT TERM SENTIMENT



9. WEEKLY ECONOMIC REPORTS

(<http://www.briefing.com/Investor/Public/Calendars/EconomicCalendar.htm>)

Date	ET	Release	For	Actual	Briefing.com	Consensus	Prior
May 13	08:30	Export Prices ex-ag.	Apr		NA	NA	0.1%
May 13	08:30	Import Prices ex-oil	Apr		NA	NA	-0.6%
May 13	08:30	Retail Sales	Apr		NA	-0.1%	-1.2%
May 13	08:30	Retail Sales ex-auto	Apr		NA	0.0%	-1.0%
May 13	10:00	Business Inventories	Mar		NA	-1.1%	-1.3%
May 13	10:30	Crude Inventories	05/08		NA	NA	+605K
May 14	08:30	Core PPI	Apr		NA	0.1%	0.0%
May 14	08:30	Initial Claims	05/09		NA	NA	601K
May 14	08:30	PPI	Apr		NA	0.1%	-1.2%
May 15	08:30	Core CPI	Apr		NA	0.1%	0.2%
May 15	08:30	CPI	Apr		NA	0.0%	-0.1%
May 15	08:30	Empire Manufacturing	May		NA	-15.00	-14.65

Copyright 2007 by Natus.com Ltd. All rights are reserved. Photocopying and further distribution of this newsletter are strictly prohibited. Information, opinion, research, and commentary contained herein is obtained from sources believed to be reliable; their reliability, however, cannot be guaranteed. The maxim of Caveat Emptor applies – let the buyer beware! This newsletter is for education purpose only. It doesn't provide individual investment advice, or act as an investment advisor, or individually advocate the purchase or sale of any security or investment. In making any investment decision, you will rely solely on your own review and examination of the facts and the records relating to such investments. Past performance of our recommendations is not an indication of future performance. We shall have no liability of whatever nature in respect of any claim, damages, loss or expense arising out of or in connection with the reliance by you on the contents of our newsletter, any promotion, published material, alert or update.

Date	ET	Release	For	Actual	Briefing.com	Consensus	Prior
May 15	09:00	Net Long-Term TIC Flows			NA	NA	\$22.0B
May 15	09:15	Capacity Utilization	Apr		NA	68.9%	69.3%
May 15	09:15	Industrial Production	Apr		NA	-0.6%	-1.5%
May 15	09:55	Mich Sentiment-Prel	May		NA	65.0	65.1