



## Daily Trading Plan for May 12, 2009

### 1. ESM9 IN PREVIOUS DAY

Open	High	Low	Closing
912.75	916.25	905.75	909.00

### 2. PIVOTS FOR ESM9

	Daily	Weekly	Monthly	Yearly
R3	925.42	990.75	1017.58	2082.17
R2	920.83	959.25	951.67	1781.33
R1	914.92	942.00	910.83	1340.67
<b>PPT</b>	<b>910.33</b>	<b>910.50</b>	<b>844.92</b>	<b>1039.83</b>
S1	904.42	893.25	804.08	599.17
S2	899.83	861.75	738.17	448.75
S3	893.92	844.50	697.33	298.33

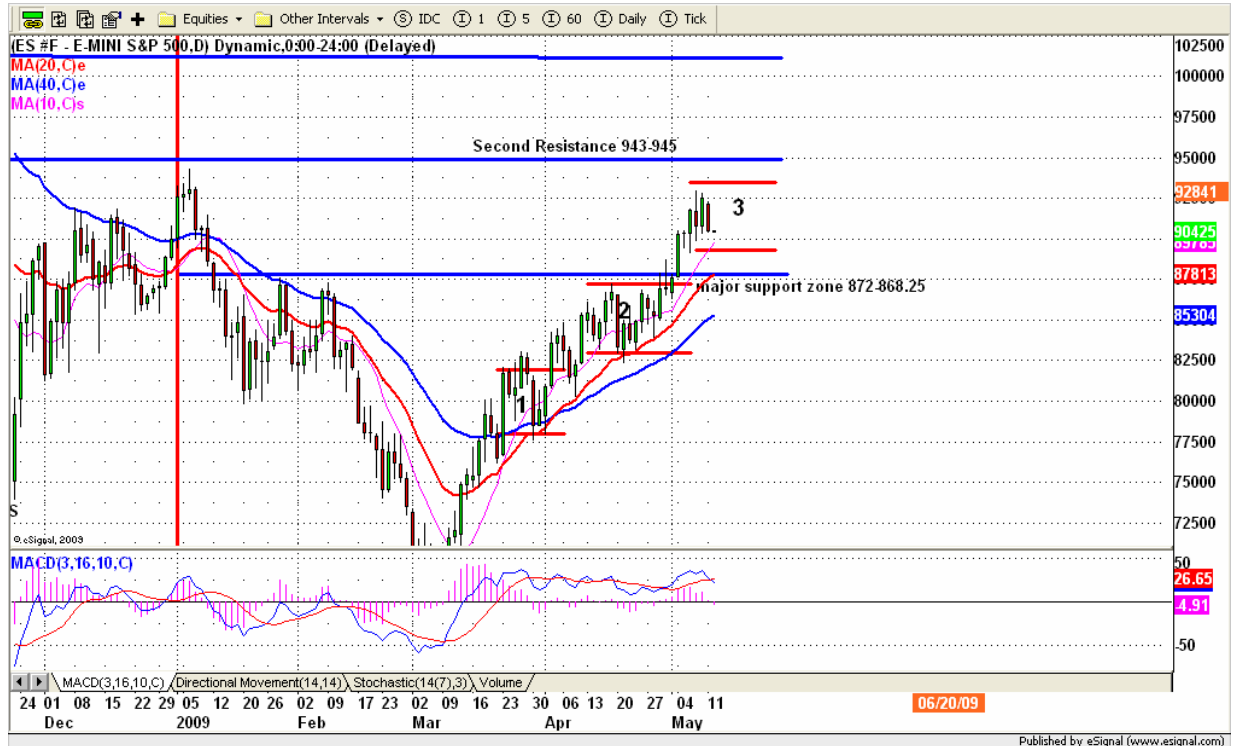
### 3. FOCUS NUMBERS

	Daily	Weekly
<b>1<sup>st</sup> Sell level</b>	<b>926.75-928.00</b>	<b>945.75-947.00</b>
<b>2<sup>nd</sup> Sell level</b>	<b>935.75-937.50</b>	<b>974.00-978.25</b>
<b>1<sup>st</sup> Buy level</b>	<b>897.25-895.25</b>	<b>880.25-875.50</b>
<b>2<sup>nd</sup> Buy level</b>	<b>884.75</b>	<b>866.00-862.25</b>

#### 4. DAILY OUTLOOK

ES pulled back into 9 daily moving average line on first day of option expiration. Today we may see a gap down at open. As soon as ES finds its support level, it should move back up. V-shape or U-turn movement should be expected today. Last week's high acts a short-term resistance level, and retesting 875-872 range could be maximum downside move for this short term period.

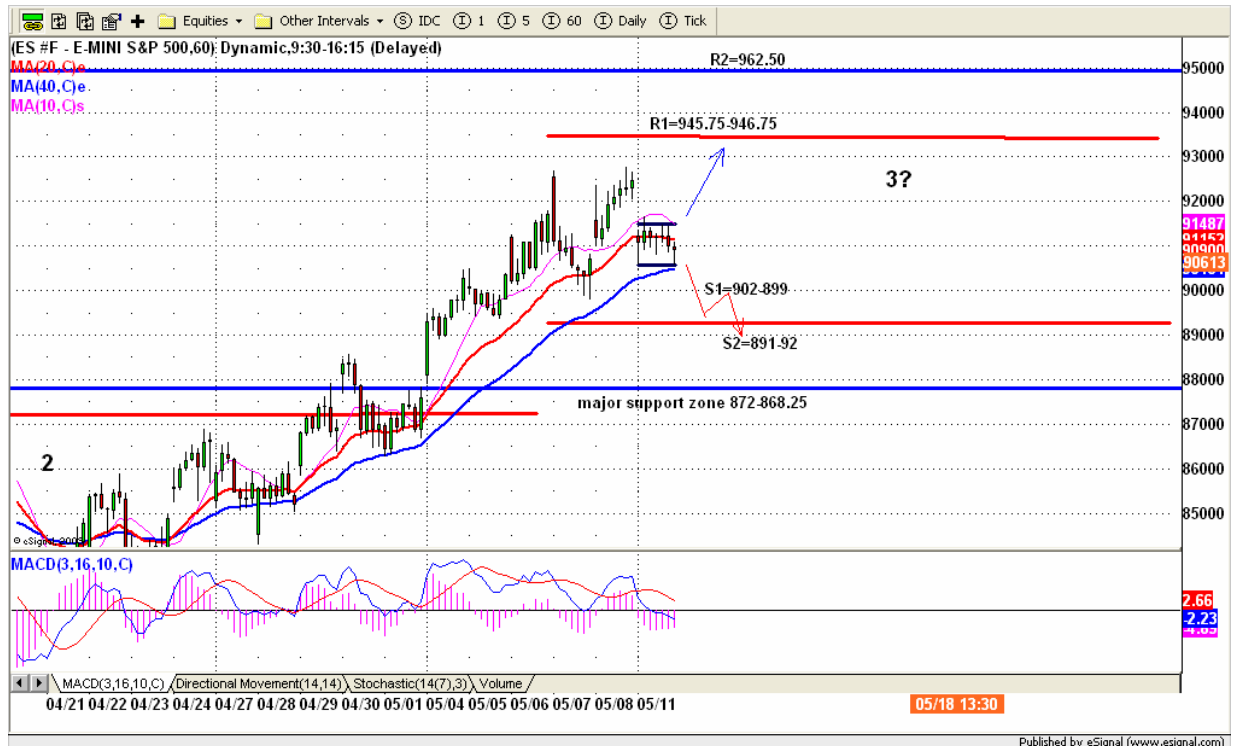
ESM9 DAILY Chart



## 5. TRADING STRATEGY FOR May 12, 2009

ES formed a (NR7). Today range expansion move should be expected. If ES moves down first before the open, we are looking for support around last week's low 898 area or lower to 890-91 range for long entry. If later ES can manage to push the price 907.50 line, the short squeeze could occur. If ES goes up first before the open, then 916.25 is key. A move above it will be bullish, and it is likely for ES to move higher to fill yesterday's gap 924 area or higher to 932-35.50 range (SHORT entry).

### ESM9 INTRADAY



### INTRADAY SCALPING NUMBERS

	Very Aggressive	Aggressive	Conservative
<b>Sell level</b>	<b>916.25-915.75</b>	<b>926.75-929.50</b>	<b>935.75-937.50</b>
<b>Buy level</b>	<b>896.00-895.25</b>	<b>884.75-885.75</b>	<b>875.00-876.00</b>

## 6. PREDICTION FOR TODAY'S MOVEMENT

### Current (interval=1.95)

925.78	+2/8
923.83	+1/8
921.88	8/8
919.92	7/8
917.97	6/8
916.02	5/8
914.06	4/8
912.11	3/8
910.16	2/8
908.20	1/8
906.25	0/8
904.30	-1/8
902.34	-2/8

### Up (Interval=3.91)

929.69	+2/8
925.78	+1/8
921.88	8/8
917.97	7/8
914.06	6/8
910.16	5/8
906.25	4/8
902.34	3/8
898.44	2/8
894.53	1/8
890.63	0/8
886.72	-1/8
882.81	-2/8

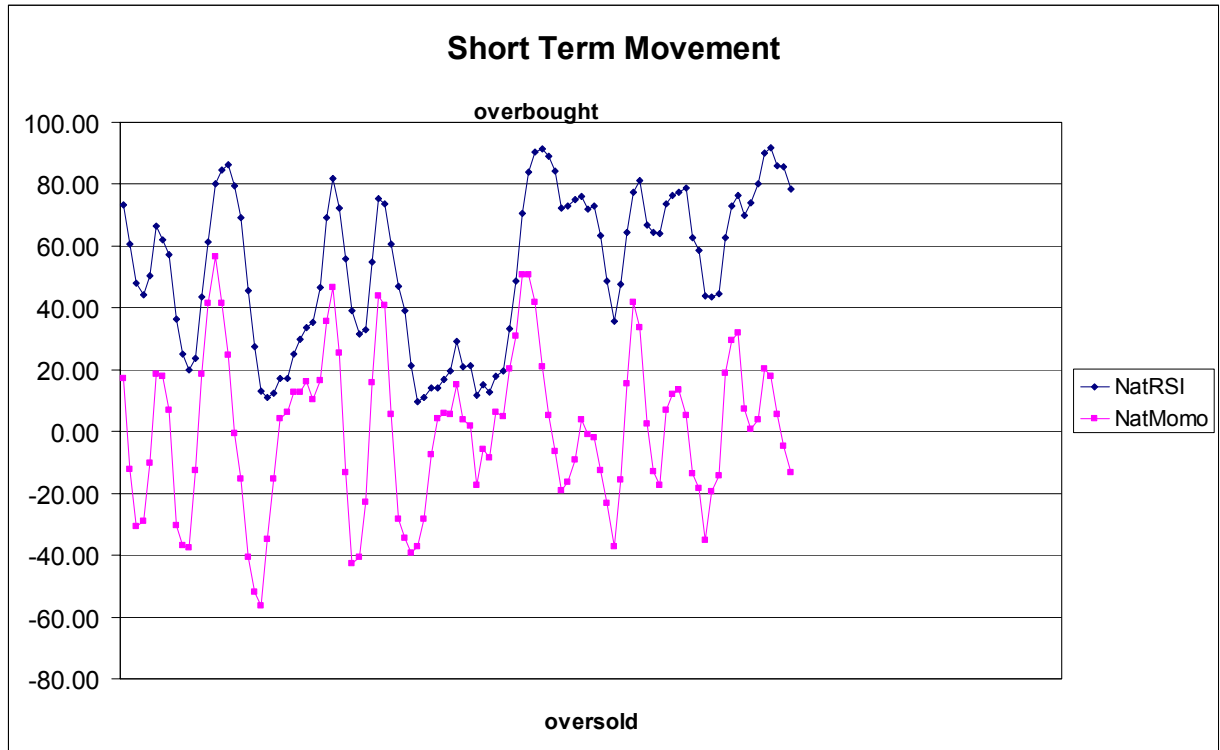
### Down (Interval=3.91)

914.06	+2/8
910.16	+1/8
906.25	8/8
902.34	7/8
898.44	6/8
894.53	5/8
890.63	4/8
886.72	3/8
882.81	2/8
878.91	1/8
875.00	0/8
871.09	-1/8
867.19	-2/8

## 7. OVERNIGHT CALL

	1 <sup>st</sup> Sell level	2 <sup>nd</sup> Sell level
	915.75-918.00	927.25-929.50
Central line	909.00	
	899.75-897.00	893.75-890.75
	1 <sup>st</sup> Buy level	2 <sup>nd</sup> Buy level

## 8. SHORT TERM SENTIMENT



## 9. WEEKLY ECONOMIC REPORTS

(<http://www.briefing.com/Investor/Public/Calendars/EconomicCalendar.htm>)

Date	ET	Release	For	Actual	Briefing.com	Consensus	Prior
May 12	08:30	Trade Balance	Mar		NA	-\$29.2B	-\$26.0B
May 12	14:00	Treasury Budget	Apr		NA	-\$63.0B	\$159.3B
May 13	08:30	Export Prices ex-ag.	Apr		NA	NA	0.1%
May 13	08:30	Import Prices ex-oil	Apr		NA	NA	-0.6%
May 13	08:30	Retail Sales	Apr		NA	-0.1%	-1.2%
May 13	08:30	Retail Sales ex-auto	Apr		NA	0.0%	-1.0%
May 13	10:00	Business Inventories	Mar		NA	-1.1%	-1.3%
May 13	10:30	Crude Inventories	05/08		NA	NA	+605K
May 14	08:30	Core PPI	Apr		NA	0.1%	0.0%
May 14	08:30	Initial Claims	05/09		NA	NA	601K
May 14	08:30	PPI	Apr		NA	0.1%	-1.2%
May 15	08:30	Core CPI	Apr		NA	0.1%	0.2%

Copyright 2007 by Natus.com Ltd. All rights are reserved. Photocopying and further distribution of this newsletter are strictly prohibited. Information, opinion, research, and commentary contained herein is obtained from sources believed to be reliable; their reliability, however, cannot be guaranteed. The maxim of Caveat Emptor applies – let the buyer beware! This newsletter is for education purpose only. It doesn't provide individual investment advice, or act as an investment advisor, or individually advocate the purchase or sale of any security or investment. In making any investment decision, you will rely solely on your own review and examination of the facts and the records relating to such investments. Past performance of our recommendations is not an indication of future performance. We shall have no liability of whatever nature in respect of any claim, damages, loss or expense arising out of or in connection with the reliance by you on the contents of our newsletter, any promotion, published material, alert or update.

Date	ET	Release	For	Actual	Briefing.com	Consensus	Prior
May 15	08:30	CPI	Apr		NA	0.0%	-0.1%
May 15	08:30	Empire Manufacturing	May		NA	-15.00	-14.65
May 15	09:00	Net Long-Term TIC Flows			NA	NA	\$22.0B
May 15	09:15	Capacity Utilization	Apr		NA	68.9%	69.3%
May 15	09:15	Industrial Production	Apr		NA	-0.6%	-1.5%
May 15	09:55	Mich Sentiment-Prel	May		NA	65.0	65.1