



Daily Trading Plan for May 8, 2009

1. ESM9 IN PREVIOUS DAY

Open	High	Low	Closing
926.00	927	898.00	907.00

2. PIVOTS FOR ESM9

	Daily	Weekly	Monthly	Yearly
R3	952.33	936.58	1017.58	2082.17
R2	939.67	911.17	951.67	1781.33
R1	923.33	893.58	910.83	1340.67
PPT	910.67	868.17	844.92	1039.83
S1	894.33	850.58	804.08	599.17
S2	888.67	825.17	738.17	448.75
S3	865.33	807.58	697.33	298.33

3. FOCUS NUMBERS

	Daily	Weekly
1st Sell level	918.25- 919.00	898.00 - 899.50 done
2nd Sell level	926.00- 925.00	933.25- 935.50
1st Buy level	902.00- 900.00	845.00- 842.00
2nd Buy level	888.00- 886.75	821.75 - 820.25

4. DAILY OUTLOOK

After another 6 days of popping, ES decided to pullback for profit taking yesterday. Did ES invalidate the short-term uptrend? No is my answer. It is only small retracement before the option expiration week. Today if ES can hold up yesterday's low, then yesterday's high still has a chance to be retested. ES still can push price up to fill Jan 7's gap around 930-932.50 area or higher. Bank stress tests all are done. The investors will be back to focus on economic news.

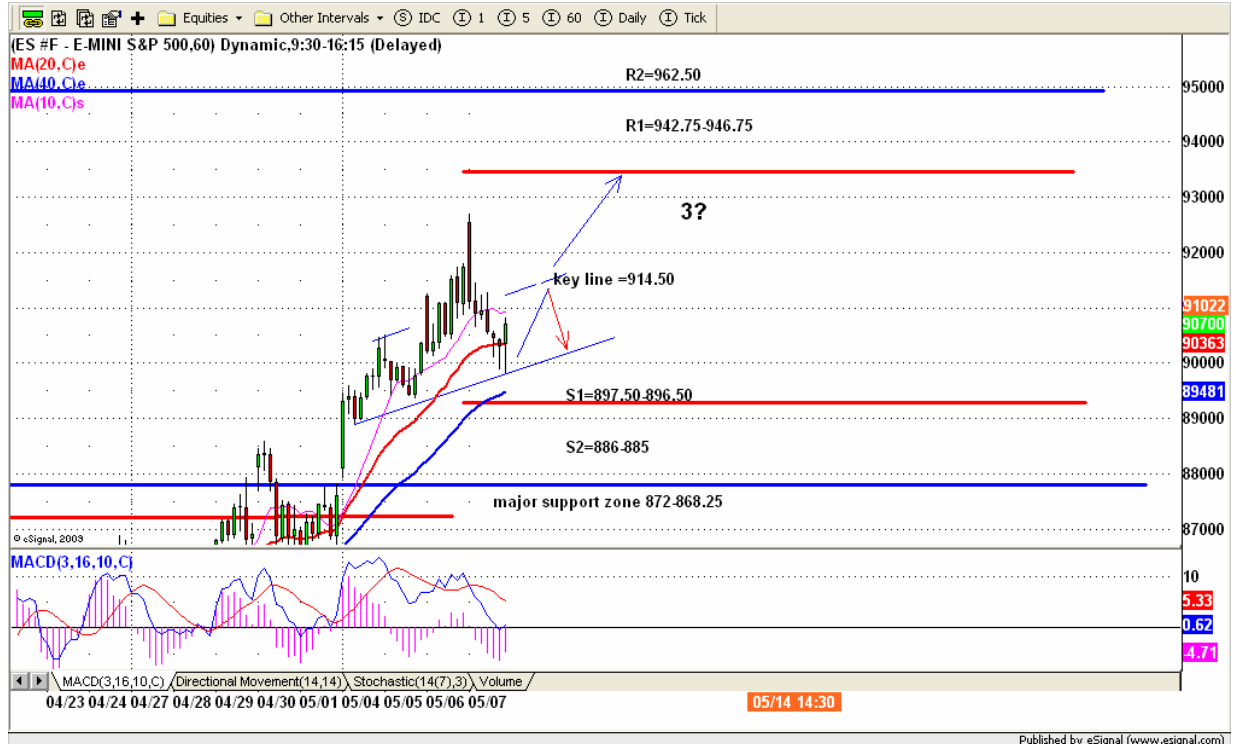
ESM9 DAILY Chart



5. TRADING STRATEGY FOR May 8, 2009

Today after unemployment report, we may see ES go sideways for little while. 914.50 is key line. If ES goes above it, it is likely going up further to 921-923 area. If ES fails to breakout 914.50 line, it is possible for ES to go lower to retest yesterday's low or little lower to 896-95 area. If ES goes down first, we are looking for double bottom pattern around the support levels for going long.

ESM9 INTRADAY



6. PREDICTION FOR TODAY'S MOVEMENT

Current (interval=3.91)

929.69	+2/8
925.78	+1/8
921.88	8/8
917.97	7/8
914.06	6/8
910.16	5/8
906.25	4/8
902.34	3/8
898.44	2/8
894.53	1/8
890.63	0/8
886.72	-1/8
882.81	-2/8

Up (Interval=3.91)

929.69	+2/8
925.78	+1/8
921.88	8/8
917.97	7/8
914.06	6/8
910.16	5/8
906.25	4/8
902.34	3/8
898.44	2/8
894.53	1/8
890.63	0/8
886.72	-1/8
882.81	-2/8

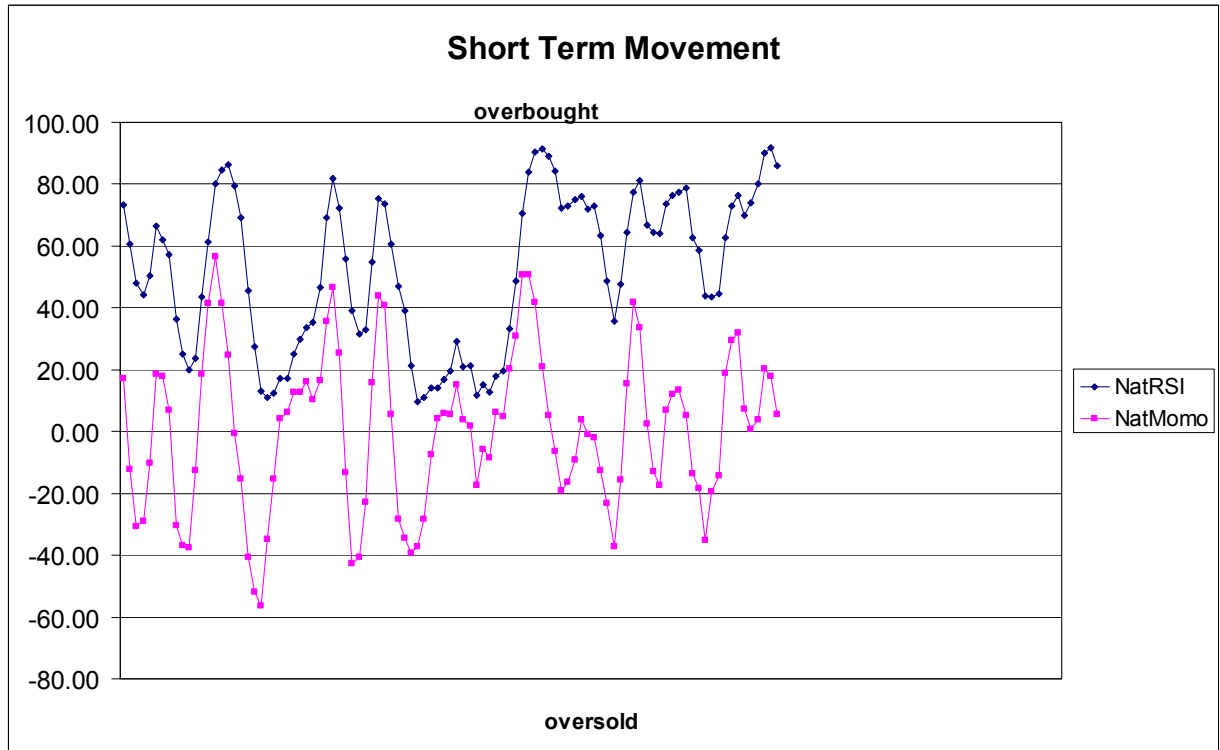
Down (Interval=3.91)

929.69	+2/8
925.78	+1/8
921.88	8/8
917.97	7/8
914.06	6/8
910.16	5/8
906.25	4/8
902.34	3/8
898.44	2/8
894.53	1/8
890.63	0/8
886.72	-1/8
882.81	-2/8

7. OVERNIGHT CALL

	1 st Sell level	2 nd Sell level
	913-915.75	921.75-924.50
Central line	907.25	
	898.75	892.75-890.00
	1 st Buy level	2 nd Buy level

8. SHORT TERM SENTIMENT



9. WEEKLY ECONOMIC REPORTS

(<http://www.briefing.com/Investor/Public/Calendars/EconomicCalendar.htm>)

Date	ET	Release	For	Actual	Briefing.com	Consensus	Prior
May 08	08:30	Average Workweek	Apr	NA	33.2	33.2	
May 08	08:30	Hourly Earnings	Apr	NA	0.2%	0.2%	
May 08	08:30	Nonfarm Payrolls	Apr	NA	-620K	-663K	
May 08	08:30	Unemployment Rate	Apr	NA	8.9%	8.5%	
May 08	10:00	Wholesale Inventories	Mar	NA	-1.0%	-1.5%	