



## Daily trading plan for April 11, 2008

### 1. ESM8 IN PREVIOUS DAY

Open	High	Low	Closing
1356.50	1369.25	1351.25	1362.75

### 2. PIVOTS FOR ESM8

	Daily	Weekly	Monthly	Yearly
R3	1388.92	1468.33	1474.83	1796.75
R2	1379.08	1425.67	1418.17	1691.75
R1	1370.92	1398.83	1371.08	1584.50
<b>PPT</b>	<b>1361.08</b>	<b>1356.17</b>	<b>1314.42</b>	<b>1479.50</b>
S1	1352.92	1329.33	1267.33	1372.25
S2	1343.08	1286.67	1210.67	1267.25
S3	1343.92	1259.83	1163.58	1160.00

### 3. FOCUS NUMBERS (intra-day Position trading)

Sell levels	Buying levels
1375.50-78.75 (First Sell#)	1349.50-47.50(first Buy#)
1386.50-88.25 (Second Sell#)	1337.75 (second Buy#)

### 4. MAJOR RESISTANCE AND SUPPORT LEVELS FOR TODAY

<b>Resistance</b>	1373.25	1375.50	1379.25	1386.50	1389.25
<b>Support</b>	1356.50	1353.00	1349.50	1343.25	1337.50

## 5. DAILY OUTLOOK

ES held the price above 20/40 day moving average line for past two days, and today as long as those two support line holds price up, ES may have one more consolidation day before breaking out this narrow range (1378-51) next week.

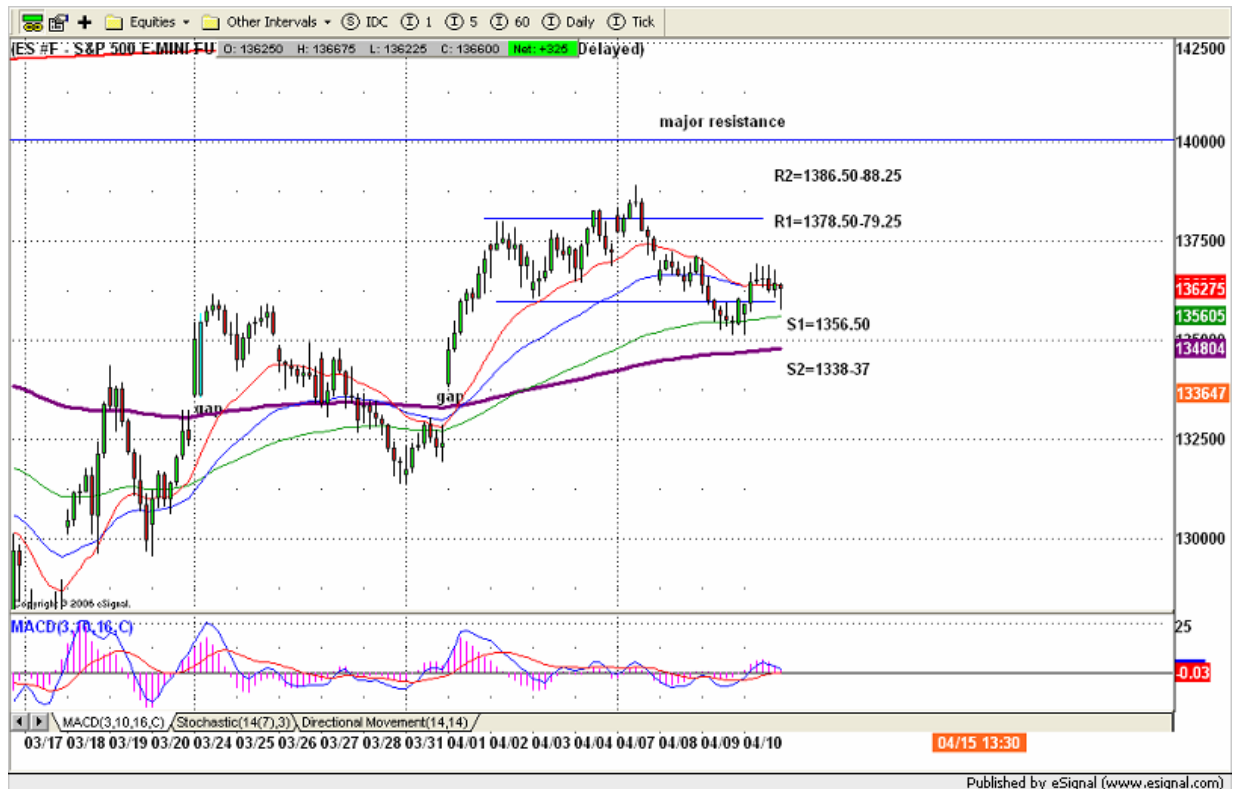
### ESM8 Daily Chart



## 6. TRADING STRATEGY FOR April 11, 2008

ES pushed price back up to its previous breakdown range 1359.50-62.25 and closed above that zone. Today if overnight ES trades above 1357.50 level, we could see price moves high first to challenge 1375.50-79.25 range again. So far ES performs without direction, but as soon as it gets ready, it could either move up high to 1378-79 (max 1388-89) or push price down 1346-43 range today.

**Intraday swing position entry on short side:**  
**1367.75 (scalping) 1378.75-79.25 (agg) and 1386.50-88.25 (cons)**  
**Intraday swing position entry on long side:**  
**1351.75 (scalping) 1346-45 (agg) and 1337.75(cons)**



## 7. PREDICTION FOR TODAY'S MOVEMENT

### Current (interval=1.95)

1371.09	+2/8
1369.14	+1/8
1367.19	8/8
1365.23	7/8
1363.28	6/8
1361.33	5/8
1359.38	4/8
1357.42	3/8
1355.47	2/8
1353.52	1/8
1351.56	0/8
1349.61	-1/8
1347.66	-2/8

### Up (Interval=3.90)

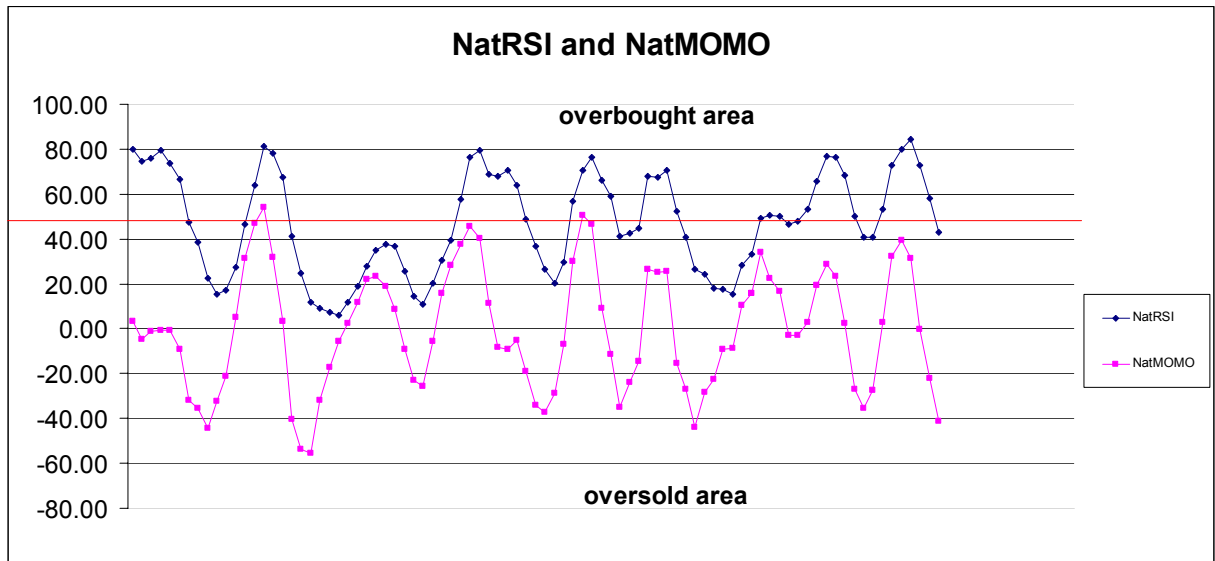
1398.44	+2/8
1394.53	+1/8
1390.63	8/8
1386.72	7/8
1382.81	6/8
1378.91	5/8
1375.00	4/8
1371.09	3/8
1367.19	2/8
1363.28	1/8
1359.38	0/8
1355.47	-1/8
1351.56	-2/8

### Down (Interval=3.90)

1382.81	+2/8
1378.91	+1/8
1375.00	8/8
1371.09	7/8
1367.19	6/8
1363.28	5/8
1359.38	4/8
1355.47	3/8
1351.56	2/8
1347.66	1/8
1343.75	0/8
1339.84	-1/8
1335.94	-2/8

## 8. OTHER INDICATORS

NatRSI (1day)	NatRSI (5day)	NatMoMo	ATR 10	Waist number
0.68	0.43	-41.45	19.40	1359.63
Neutral	neutral			



## 9. WEEKLY ECONOMIC REPORTS (<http://www.tradethenews.com/weekly-calendar.php>)

Date	ET	Release	For	Actual	Briefing.com	Consensus	Prior
Apr 11	08:30	<a href="#">Export Prices ex-ag.</a>	Mar		NA	NA	0.5%
Apr 11	08:30	<a href="#">Import Prices ex-oil</a>	Mar		NA	NA	0.6%
Apr 11	10:00	<a href="#">Mich Sentiment-Prel.</a>	Apr		68.0	69.4	69.5