



Daily trading plan for April 4, 2008

1. ESM8 IN PREVIOUS DAY

Open	High	Low	Closing
1362.75	1377.75	1360.25	1373.50

2. PIVOTS FOR ESM8

	Daily	Weekly	Monthly	Yearly
R3	1398.25	1452.08	1474.83	1796.75
R2	1388.00	1397.92	1418.17	1691.75
R1	1380.75	1361.33	1371.08	1584.50
PPT	1370.50	1307.17	1314.42	1479.50
S1	1363.25	1270.58	1267.33	1372.25
S2	1353.00	1216.42	1210.67	1267.25
S3	1345.75	1179.83	1163.58	1160.00

3. FOCUS NUMBERS (intra-day Position trading)

Sell levels	Buying levels
1388.50-86.50 (First Sell#)	1354.50-51.50 (first Buy#)
1397.00-95.25 (Second Sell#)	1345.75-42.75 (second Buy#)

4. MAJOR RESISTANCE AND SUPPORT LEVELS FOR TODAY

Resistance	1381.00	1388.50	1396.75	1399.25	1406.75
Support	1364.25	1351.50	1342.50	1338.00	1331.50

5. DAILY OUTLOOK

ES continued consolidating last Tuesday's gain. There are many resistance levels ahead, also there are lots of support lines below the current price. All depend on today's economic report to play out.

Daily indicators start to approach overbought area. We may see last thrust move up before ES pulls back down again.

ESM8 Daily Chart



6. TRADING STRATEGY FOR April 4, 2008

ES had sideways move for a second day. Today if there is a break above 1381, ES could climb up to 1388.50 or higher to 1395-97 range to complete short term bullish pattern. A move below 1359.50 would be bearish. The price could be pushed down to 1354-52 range or lower. Wait for economic report first, and then see how the price reacts to find a clue about which direction ES is going to go.

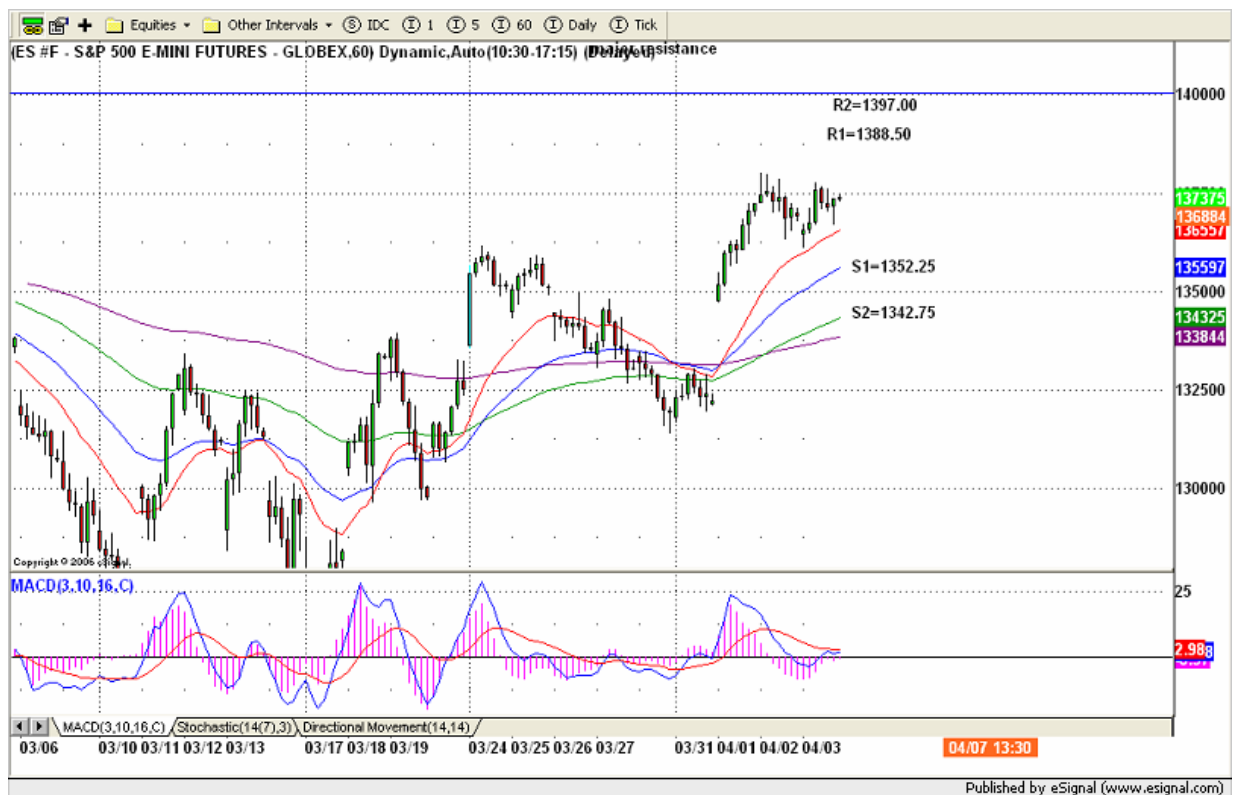
Intraday swing position entry on short side:

1383.50(scalping) 1388.50 (agg) and 1397.00 (cons)

Intraday swing position entry on long side:

1354.50 (scalping) 1346-45(agg) and 1337- 38.25 (cons)

ESM8 INTRADAY



7. PREDICTION FOR TODAY'S MOVEMENT

Current (interval=1.98)

1378.91	+2/8
1376.95	+1/8
1375.00	8/8
1373.05	7/8
1371.09	6/8
1369.14	5/8
1367.19	4/8
1365.23	3/8
1363.28	2/8
1361.33	1/8
1359.38	0/8
1357.42	-1/8
1355.47	-2/8

Up (Interval=3.90)

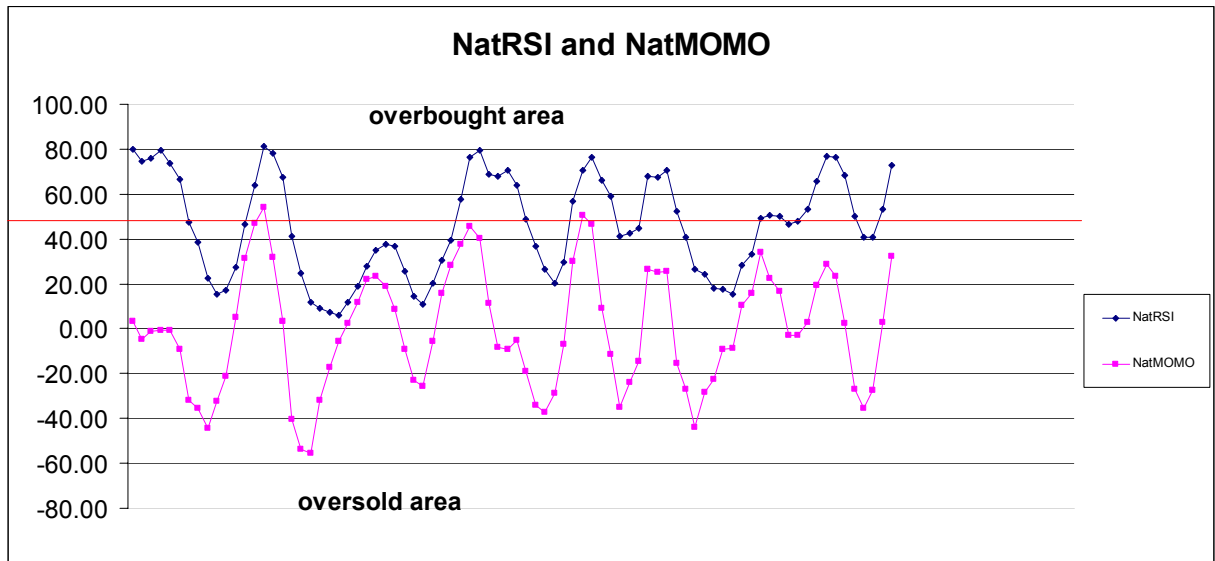
1398.44	+2/8
1394.53	+1/8
1390.63	8/8
1386.72	7/8
1382.81	6/8
1378.91	5/8
1375.00	4/8
1371.09	3/8
1367.19	2/8
1363.28	1/8
1359.38	0/8
1355.47	-1/8
1351.56	-2/8

Down (Interval=3.90)

1382.81	+2/8
1378.91	+1/8
1375.00	8/8
1371.09	7/8
1367.19	6/8
1363.28	5/8
1359.38	4/8
1355.47	3/8
1351.56	2/8
1347.66	1/8
1343.75	0/8
1339.84	-1/8
1335.94	-2/8

8. OTHER INDICATORS

NatRSI (1day)	NatRSI (5day)	NatMoMo	ATR 10	Waist number
0.81	0.73	32.08	22.65	1368.13
Overbought	overbought			



9. WEEKLY ECONOMIC REPORTS (<http://www.tradethenews.com/weekly-calendar.php>)

Date	ET	Release	For	Actual	Briefing.com	Consensus	Prior
Apr 04	08:30	Nonfarm Payrolls	Mar		-70K	-40K	-63K
Apr 04	08:30	Unemployment Rate	Mar		4.9%	5.0%	4.8%
Apr 04	08:30	Hourly Earnings	Mar		0.3%	0.3%	0.3%
Apr 04	08:30	Average Workweek	Mar		33.7	33.7	33.7