



Daily trading plan for April 3, 2008

1. ESM8 IN PREVIOUS DAY

Open	High	Low	Closing
1373.75	1380.00	1363.00	1371.00

2. PIVOTS FOR ESM8

	Daily	Weekly	Monthly	Yearly
R3	1396.17	1452.08	1474.83	1796.75
R2	1388.33	1397.92	1418.17	1691.75
R1	1379.67	1361.33	1371.08	1584.50
PPT	1371.33	1307.17	1314.42	1479.50
S1	1362.67	1270.58	1267.33	1372.25
S2	1354.33	1216.42	1210.67	1267.25
S3	1345.67	1179.83	1163.58	1160.00

3. FOCUS NUMBERS (intra-day Position trading)

Sell levels	Buying levels
1388.50 (First Sell#)	1354.50 (first Buy#)
1397.00 (Second Sell#)	1346-45.75 (second Buy#)

4. MAJOR RESISTANCE AND SUPPORT LEVELS FOR TODAY

Resistance	1379.75	1388.50	1396.75	1406.75	1419.25
Support	1354.25	1349.00	1345.50	1338.00	1331.75

5. DAILY OUTLOOK

ES paused its advance and made a relative narrow range move. Today we may see a further pullback into 1356-54 area or lower to 1346-45 area for testing. But this kind of downside move could be slow. As soon as ES finds its support, another bounce up should be expected.

ESM8 Daily Chart



6. TRADING STRATEGY FOR April 3, 2008

ES made a little continuation high move in the morning, but in the afternoon, it lost its steam and pulled back below yesterday's high for closing. Today ES could move down first to search for solid support. It could be around 1356-54 or lower to 1346-45 area. As long as the 1346-45 range holds, a bounce back up in the afternoon should be expected.

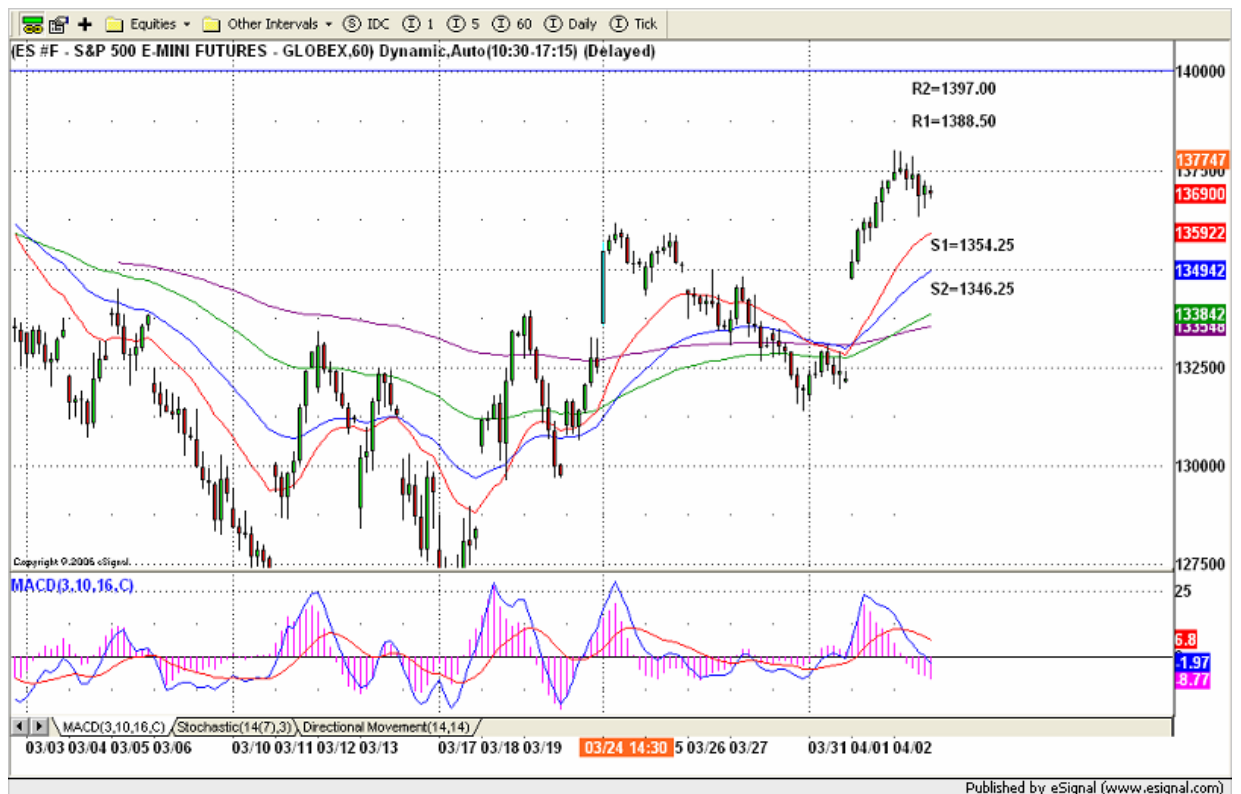
Intraday swing position entry on short side:

1383.50 (scalping) 1388.50 (agg) and 1397.00 (cons)

Intraday swing position entry on long side:

1354.50 (scalping) 1346-45 (agg) and 1337-38.25 (cons)

ESM8 INTRADAY



7. PREDICTION FOR TODAY'S MOVEMENT

Current (interval=3.90)

1382.81	+2/8
1378.91	+1/8
1375.00	8/8
1371.09	7/8
1367.19	6/8
1363.28	5/8
1359.38	4/8
1355.47	3/8
1351.56	2/8
1347.66	1/8
1343.75	0/8
1339.84	-1/8
1335.94	-2/8

Up (Interval=3.90)

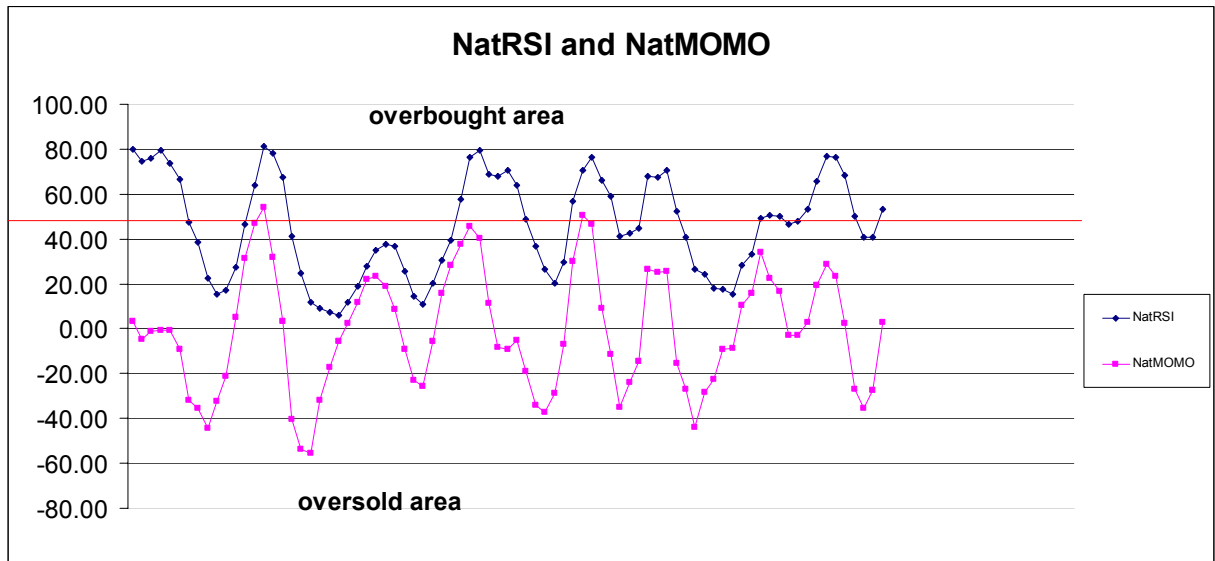
1398.44	+2/8
1394.53	+1/8
1390.63	8/8
1386.72	7/8
1382.81	6/8
1378.91	5/8
1375.00	4/8
1371.09	3/8
1367.19	2/8
1363.28	1/8
1359.38	0/8
1355.47	-1/8
1351.56	-2/8

Down (Interval=3.90)

1382.81	+2/8
1378.91	+1/8
1375.00	8/8
1371.09	7/8
1367.19	6/8
1363.28	5/8
1359.38	4/8
1355.47	3/8
1351.56	2/8
1347.66	1/8
1343.75	0/8
1339.84	-1/8
1335.94	-2/8

8. OTHER INDICATORS

NatRSI (1day)	NatRSI (5day)	NatMoMo	ATR 10	Waist number
0.41	0.53	3.07	25.60	1372.38
neutral	neutral			



9. WEEKLY ECONOMIC REPORTS (<http://www.tradethenews.com/weekly-calendar.php>)

Date	ET	Release	For	Actual	Briefing.com	Consensus	Prior
Apr 03	08:30	Initial Claims	03/29	360K	NA	366K	
Apr 03	10:00	ISM Services	Mar	49.0	49.2	49.3	
Apr 04	08:30	Nonfarm Payrolls	Mar	-70K	-40K	-63K	
Apr 04	08:30	Unemployment Rate	Mar	4.9%	5.0%	4.8%	
Apr 04	08:30	Hourly Earnings	Mar	0.3%	0.3%	0.3%	
Apr 04	08:30	Average Workweek	Mar	33.7	33.7	33.7	