



Daily trading plan for April 2, 2008

1. ESM8 IN PREVIOUS DAY

Open	High	Low	Closing
1339.00	1372.50	1338.00	1370.50

2. PIVOTS FOR ESM8

	Daily	Weekly	Monthly	Yearly
R3	1413.17	1452.08	1474.83	1796.75
R2	1394.83	1397.92	1418.17	1691.75
R1	1382.67	1361.33	1371.08	1584.50
PPT	1360.33	1307.17	1314.42	1479.50
S1	1348.17	1270.58	1267.33	1372.25
S2	1325.83	1216.42	1210.67	1267.25
S3	1313.67	1179.83	1163.58	1160.00

3. FOCUS NUMBERS (intra-day Position trading)

Sell levels	Buying levels
1382.50 (First Sell#)	1353.50 (first Buy#)
1395.75(Second Sell#)	1345.25-43.00 (second Buy#)

4. MAJOR RESISTANCE AND SUPPORT LEVELS FOR TODAY

Resistance	1372.75	1379.25	1382.75	1388.75	1397.00
Support	1353.00	1349.25	1343.75	1338.00	1331.75

5. DAILY OUTLOOK

ES finally decided to make an impressive counter move on the first day of April. This counter move rally could carry until mid-April. The full measurement for this rally could extend up to 1425-1450 range.

Today we may see a minor pullback in the morning. As soon as ES finds out the support level, it should move back to yesterday's high area or it could make a continuation high move in the afternoon.

ESM8 Daily Chart



6. TRADING STRATEGY FOR April 2, 2008

ES could pullback into 1353-52 area to search for morning support. As long as 1353-52 level holds, 1372.50-77.75 could be retested again. At the meantime, there is a gap around 1380.50 area. It is possible for ES to fill that gap too. Today's major resistance level is 1382.75 and major support level is 1343-42. Looking for early morning pullback move and go long one more time.

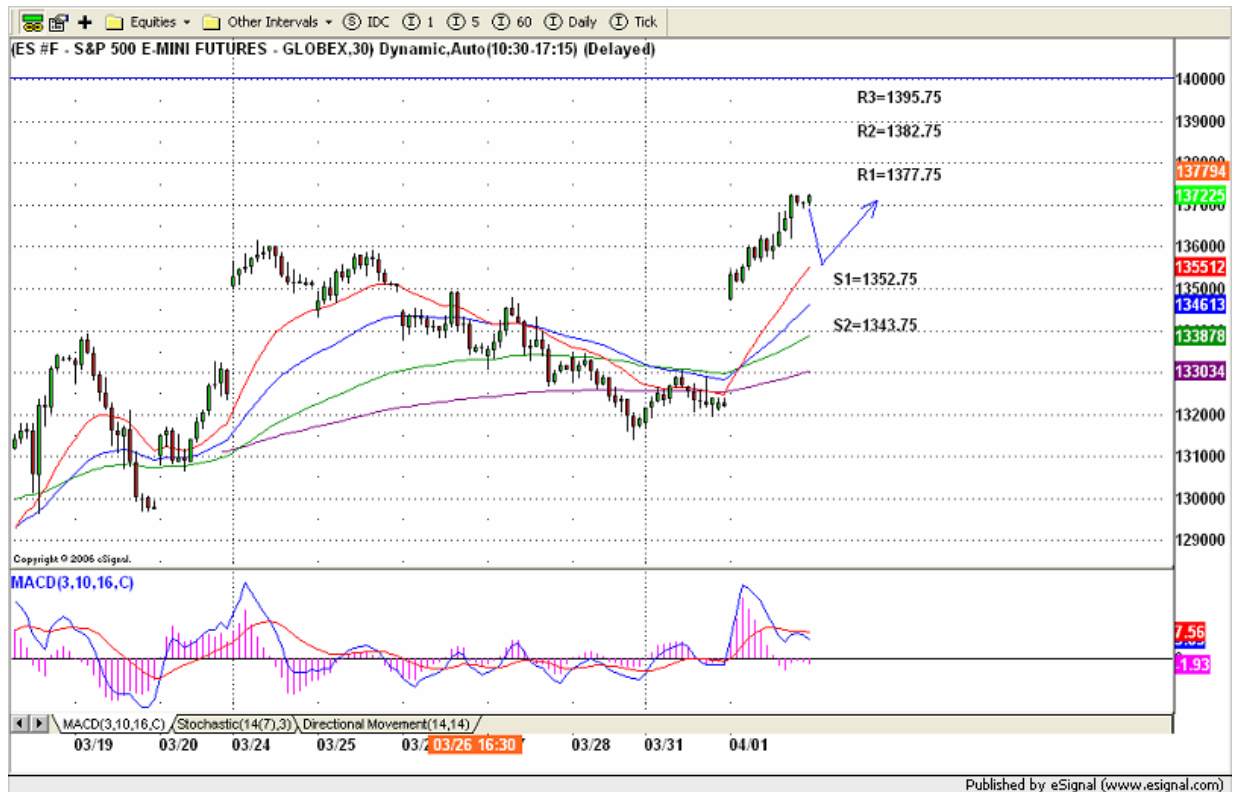
Intraday swing position entry on short side:

1372.50 (scalping) 1380.50-77.75 (agg) and 1395.75 (cons)

Intraday swing position entry on long side:

1353-51.25 (scalping) 1343.72-44.25 (agg) and 1337- 38.25 (cons)

ESM8 INTRADAY



7. PREDICTION FOR TODAY'S MOVEMENT

Current (interval=7.82)

1382.81	+2/8
1378.91	+1/8
1375.00	8/8
1371.09	7/8
1367.19	6/8
1363.28	5/8
1359.38	4/8
1355.47	3/8
1351.56	2/8
1347.66	1/8
1343.75	0/8
1339.84	-1/8
1335.94	-2/8

Up (Interval=7.82)

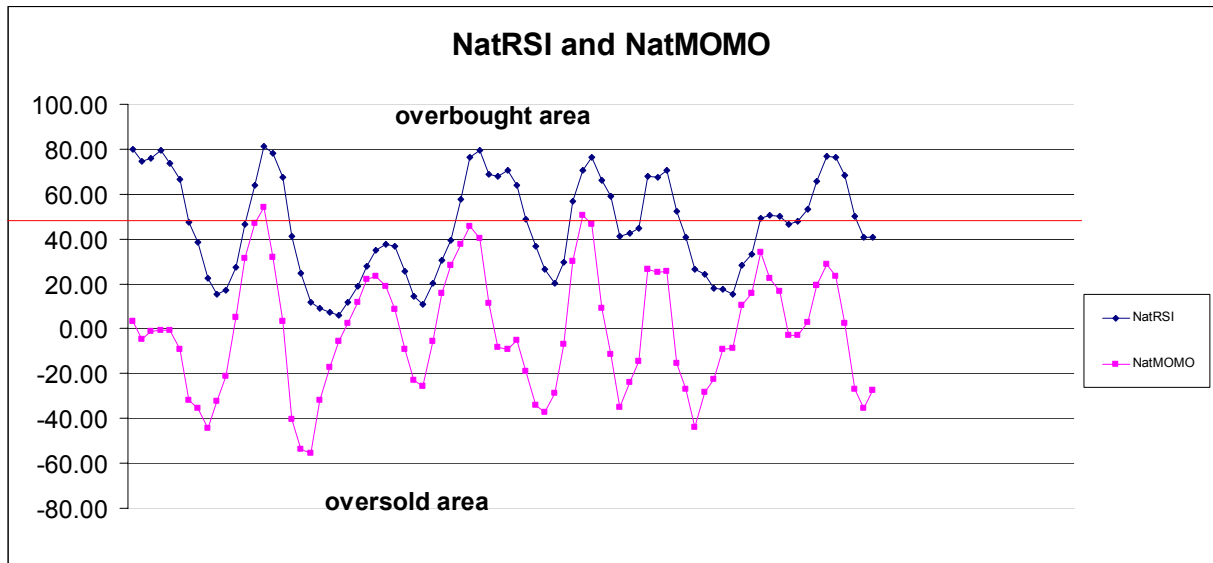
1453.13	+2/8
1445.31	+1/8
1437.50	8/8
1429.69	7/8
1421.88	6/8
1414.06	5/8
1406.25	4/8
1398.44	3/8
1390.63	2/8
1382.81	1/8
1375.00	0/8
1367.19	-1/8
1359.38	-2/8

Down (Interval=7.82)

1382.81	+2/8
1378.91	+1/8
1375.00	8/8
1371.09	7/8
1367.19	6/8
1363.28	5/8
1359.38	4/8
1355.47	3/8
1351.56	2/8
1347.66	1/8
1343.75	0/8
1339.84	-1/8
1335.94	-2/8

8. OTHER INDICATORS

NatRSI (1day)	NatRSI (5day)	NatMoMo	ATR 10	Waist number
0.51	0.40	-27.63	27.70	1354.63
neutral	neutral			



9. WEEKLY ECONOMIC REPORTS (<http://www.tradethenews.com/weekly-calendar.php>)

Date	ET	Release	For	Actual	Briefing.com	Consensus	Prior
Apr 02	08:15	ADP Employment	Mar			-23K	-23K
Apr 02	10:00	Factory Orders	Feb		-0.5%	0.7%	-2.5%
Apr 02	10:30	Crude Inventories	03/29		NA	NA	88K
Apr 03	08:30	Initial Claims	03/29		360K	NA	366K
Apr 03	10:00	ISM Services	Mar		49.0	49.2	49.3
Apr 04	08:30	Nonfarm Payrolls	Mar		-70K	-40K	-63K
Apr 04	08:30	Unemployment Rate	Mar		4.9%	5.0%	4.8%
Apr 04	08:30	Hourly Earnings	Mar		0.3%	0.3%	0.3%
Apr 04	08:30	Average Workweek	Mar		33.7	33.7	33.7