



Daily trading plan for Dec. 21, 2007

Over the holidays our trading room will be closed Dec. 24, 25, 26 and 31, and Jan 1, 2008. Dec. 27-28, I will be in the room occasionally for questions. The daily trading plan will resume on Jan 2, 2008.

1. ESH8 IN PREVIOUS DAY

Open	High	Low	Closing
1474.50	1475.00	1457.50	1474.75

2. PIVOTS FOR ESU7

	Daily	Weekly	Monthly	Yearly
R3	1498.17	1572.33	1679.33	1722.00
R2	1486.58	1549.67	1609.42	1583.50
R1	1480.67	1514.08	1546.58	1506.00
PPT	1469.08	1491.42	1476.67	1367.50
S1	1463.17	1455.83	1413.83	1290.00
S2	1451.58	1433.17	1343.92	1151.50
S3	1445.67	1397.58	1281.08	1074.00

3. FOCUS NUMBERS (intra-day Position trading)

Sell levels	Buying levels
1482.25-80 (First Sell#)	1454 – 53.25 (first Buy#)
1495.75 (Second Sell#)	1441.00 (second Buy#)

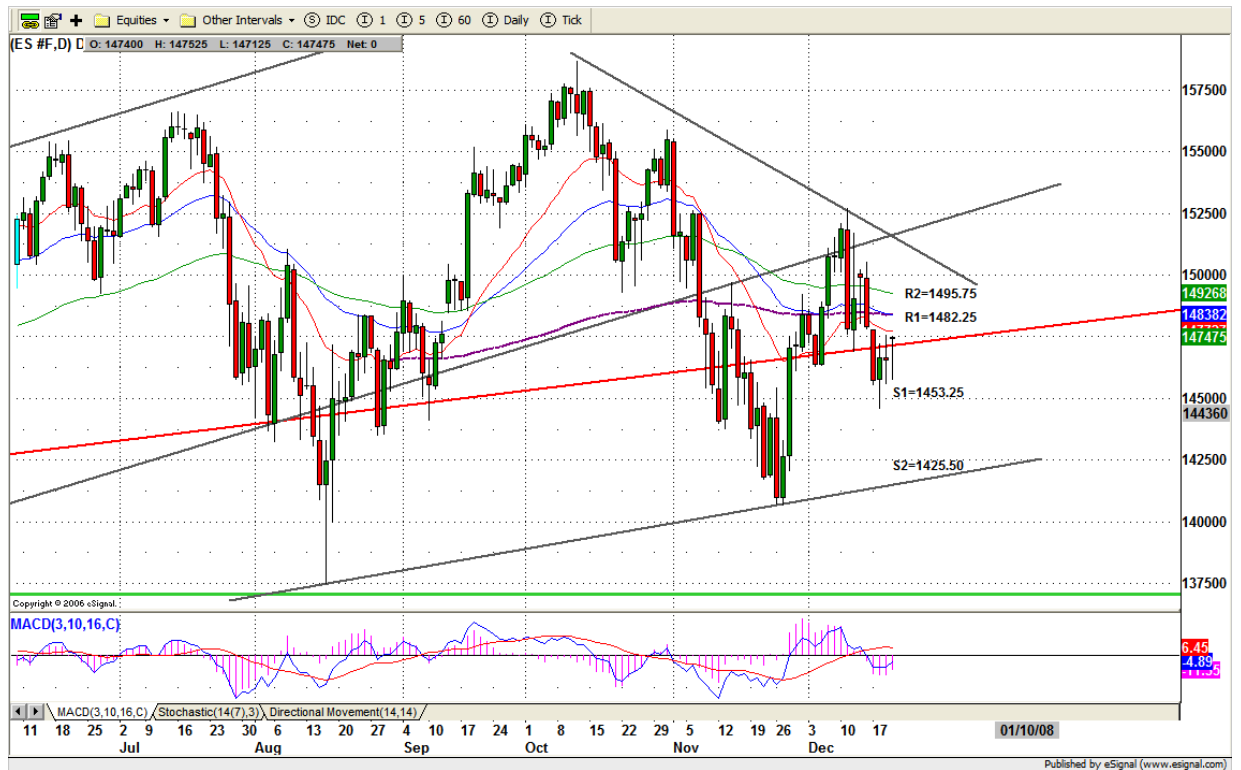
4. MAJOR RESISTANCE AND SUPPORT LEVELS FOR TODAY

Resistance	1478.50	1480.00	1486.75	1489.50	1495.75
Support	1465.75	1457.50	1453.25	1446.75	1441.00

5. DAILY OUTLOOK

ES struggled again with one of the most important technical levels. It is trying to break through the 20/40, and 200 moving average yesterday, but still unable to make it yet. Today it will try again. Fed money and Santa are working on the buying side which it could at least help to hold up the market for holiday period. But upside really is limited.

ESH8 Daily Chart



6. TRADING STRATEGY FOR Dec. 21, 2007

ES repeated its Tuesday move: Gap up strong at the open, but quickly gave back all gains until afternoon, when it bounced back. This is typical option game playing. Today is option expiration day, we may see price run up high first until last hour and sell off near the end. But no matter what ES does, holiday drives the price.

If ES runs up first in the early morning, looking for gap area 1478.50 as first resistance level, we may see price to be pushed up a little higher to 1480-82.25 range. As long as ES doesn't breakout 1485.75 level, we are looking for short entry.

Intraday swing position entry on short side:
1478.50 (Scalping) 1482.75-84.75 (agg) and 1495.75 (cons)
Intraday swing position entry on long side:
1457.75 (scalping) 1453.00 (agg) and 1444.50 (cons)

ESH8 INTRADAY



7. PREDICTION FOR TODAY'S MOVEMENT

Current (interval=3.90)

1476.56	+2/8
1472.66	+1/8
1468.75	8/8
1464.84	7/8
1460.94	6/8
1457.03	5/8
1453.13	4/8
1449.22	3/8
1445.31	2/8
1441.41	1/8
1437.50	0/8
1433.59	-1/8
1429.69	-2/8

Up (Interval=3.90)

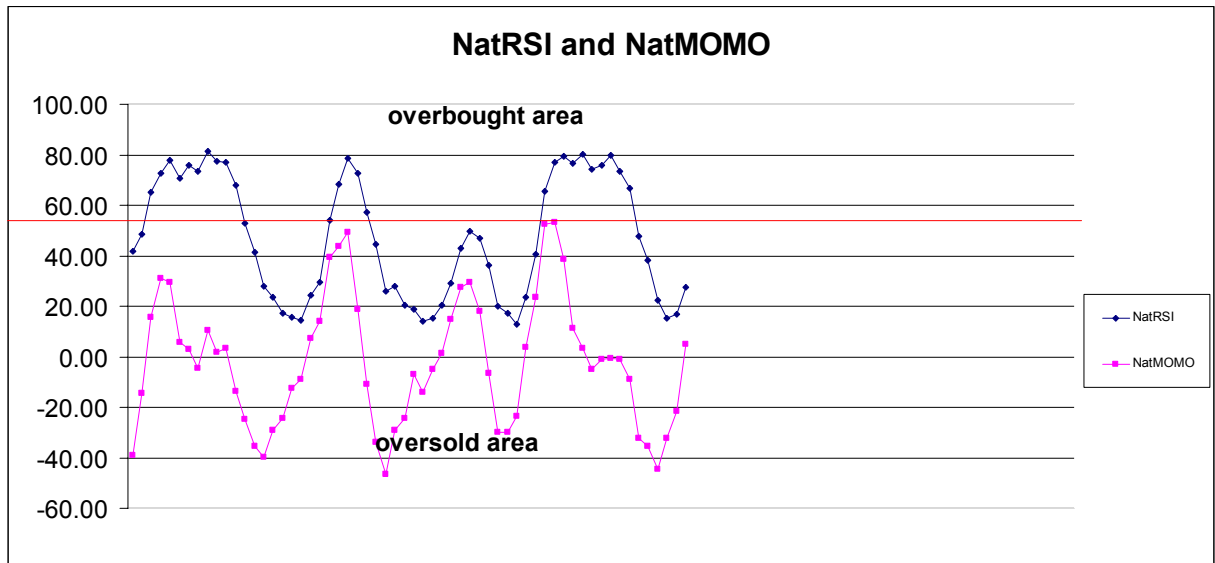
1507.81	+2/8
1503.91	+1/8
1500.00	8/8
1496.09	7/8
1492.19	6/8
1488.28	5/8
1484.38	4/8
1480.47	3/8
1476.56	2/8
1472.66	1/8
1468.75	0/8
1464.84	-1/8
1460.94	-2/8

Down (Interval=3.90)

1476.56	+2/8
1472.66	+1/8
1468.75	8/8
1464.84	7/8
1460.94	6/8
1457.03	5/8
1453.13	4/8
1449.22	3/8
1445.31	2/8
1441.41	1/8
1437.50	0/8
1433.59	-1/8
1429.69	-2/8

8. OTHER INDICATORS

NatRSI (1day)	NatRSI (5day)	NatMoMo	ATR 10	Waist number
0.50	0.27	5.04	24.50	1474.63
neutral	neutral			



9. WEEKLY ECONOMIC REPORTS (<http://www.tradethenews.com/weekly-calendar.php>)

Date	ET	Release	For	Actual	Briefing.com	Consensus	Prior
Dec 21	08:30	Personal Income	Nov	NA	0.5%	0.2%	
Dec 21	08:30	Personal Spending	Nov	NA	0.5%	0.2%	
Dec 21	08:30	Core PCE Inflation	Nov	NA	0.2%	0.2%	
Dec 21	10:00	Mich Sentiment-Rev.	Dec	NA	74.3	74.5	

HOPE YOU HAVE A WONDERFUL HOLIDAY SEASON

