



Daily trading plan for Dec. 14, 2007

1. ESH8 IN PREVIOUS DAY

Open	High	Low	Closing
1490.00	1501.25	1480.00	1498.50

2. PIVOTS FOR ESU7

	Daily	Weekly	Monthly	Yearly
R3	1527.75	1576.92	1679.33	1722.00
R2	1514.50	1545.08	1609.42	1583.50
R1	1506.50	1526.17	1546.58	1506.00
PPT	1493.25	1494.33	1476.67	1367.50
S1	1485.25	1475.42	1413.83	1290.00
S2	1472.00	1443.58	1343.92	1151.50
S3	1464.00	1424.67	1281.08	1074.00

3. FOCUS NUMBERS (intra-day Position trading)

Sell levels	Buying levels
1519.50 (First Sell#)	1484.25 - 86.25 (first Buy#)
1538.00(Second Sell#)	1461.25- 59 (second Buy#)

4. MAJOR RESISTANCE AND SUPPORT LEVELS FOR TODAY

Resistance	1507.25	1515.75	1522.75	1527.00	1533.75
Support	1493.58	1488.25	1484.75	1481.25	1472.75

5. DAILY OUTLOOK

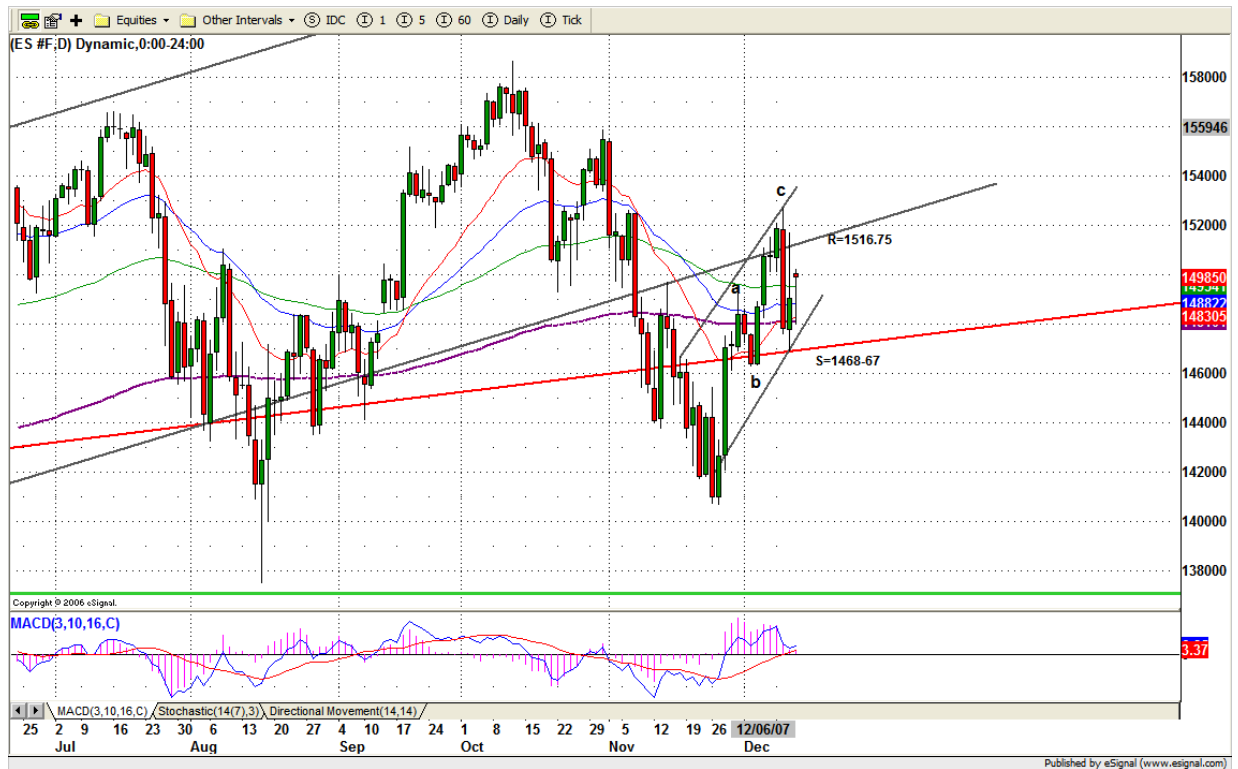
Rollover day is over. Back to normal trading. ES opened at low and closed at high range. Today we should see a continuation high move from ES in the morning before it pulls back down again.

For the new contract ESH8, it needs to retest old contract's high to make sure that high is a true resistance before it will give up making a new high. If ES can breakout 1527 level, that means that ES intends to move a-b-c-d-f pattern instead of A-B-C pattern.

From Wednesday, there were divergence messages from Fed and the market. Fed came up the rescue package which means the Fed is keeping the money window open — buy. The market turned into bearish — sell — and could be fighting with the Fed. Don't fight the Fed. At least not now when Fed encourages buyers, plus holiday bounce season.

In the coming days, there will be high volatility in the market. Today CPI report also will lead to price choppiness. Trading with caution.

ESH8 Daily Chart



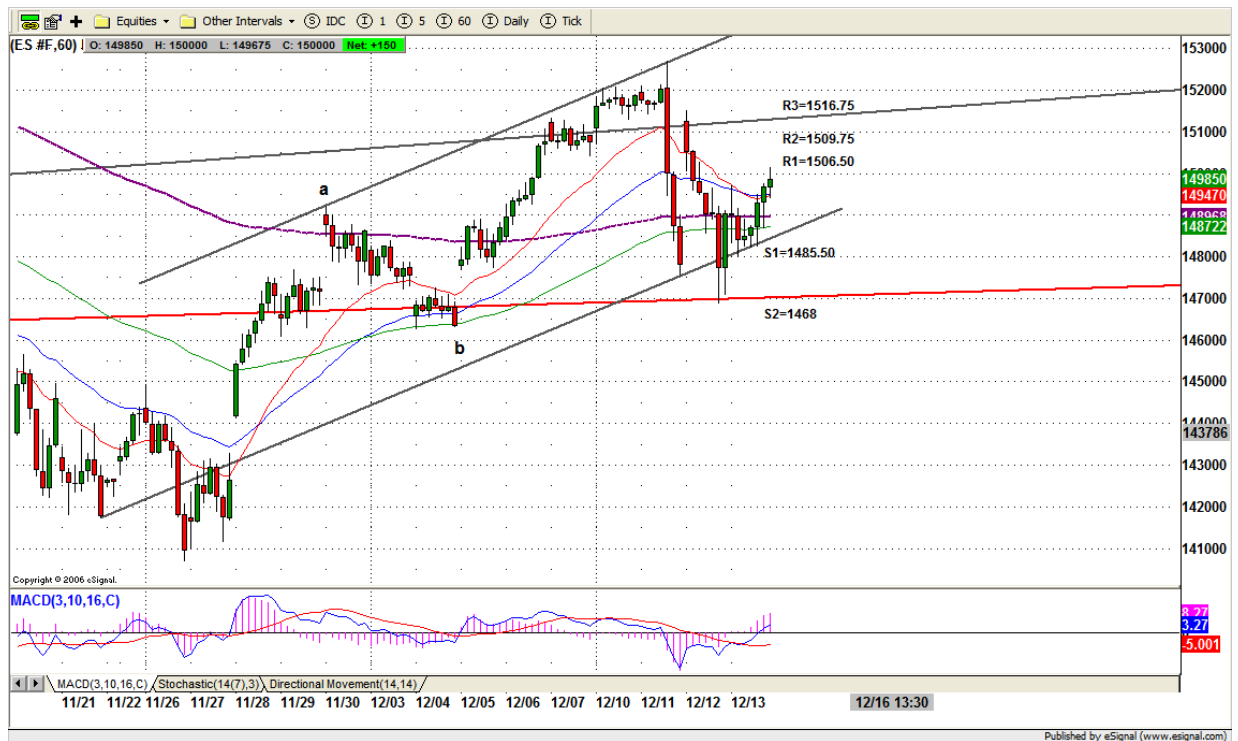
6. TRADING STRATEGY FOR Dec. 14, 2007

ES closed above 20/40-EMA line on 60-min chart which looks bullish. But because yesterday is a rollover day, it didn't mean too much. As long as ES doesn't breakout 1517 level, the intraday trend remains downside. The problem is that Fed intervention and the holiday season puts our bears in caution mode. Those two may push price back up to 1517 area for testing before ES goes down again.

Today early morning, if ES gap up to 1516-19 area, GO SHORT and if ES dip into 1481-83, GO LONG.

Intraday swing position entry on short side:
1516.75 (Scalping) 1526.75 (agg) and 1538 (cons)
Intraday swing position entry on long side:
1478.75 (scalping) 1461.25 (agg) and 1455.25 (cons)

ESH8 INTRADAY



7. PREDICTION FOR TODAY'S MOVEMENT

Current (interval=3.90)

1507.81	+2/8
1503.91	+1/8
1500.00	8/8
1496.09	7/8
1492.19	6/8
1488.28	5/8
1484.38	4/8
1480.47	3/8
1476.56	2/8
1472.66	1/8
1468.75	0/8
1464.84	-1/8
1460.94	-2/8

Up (Interval=7.82)

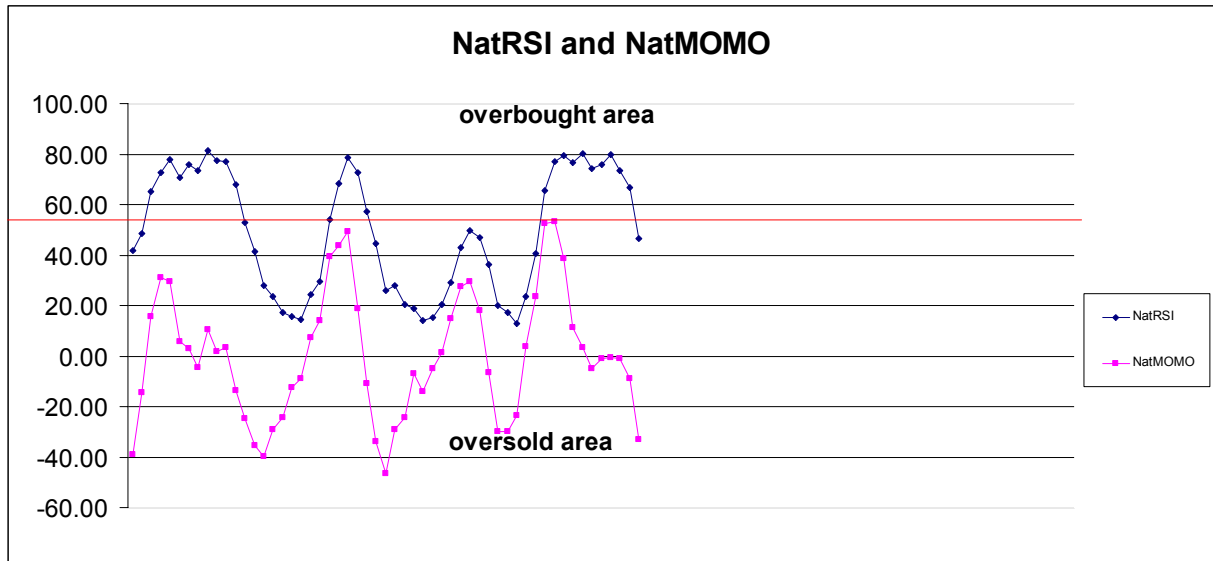
1578.13	+2/8
1570.31	+1/8
1562.50	8/8
1554.69	7/8
1546.88	6/8
1539.06	5/8
1531.25	4/8
1523.44	3/8
1515.63	2/8
1507.81	1/8
1500.00	0/8
1492.19	-1/8
1484.38	-2/8

Down (Interval=7.82)

1515.63	+2/8
1507.81	+1/8
1500.00	8/8
1492.19	7/8
1484.38	6/8
1476.56	5/8
1468.75	4/8
1460.94	3/8
1453.13	2/8
1445.31	1/8
1437.50	0/8
1429.69	-1/8
1421.88	-2/8

8. OTHER INDICATORS

NatRSI (1day)	NatRSI (5day)	NatMoMo	ATR 10	Waist number
0.69	0.47	-32.46	22.18	1492.75
neutral	neutral			



9. WEEKLY ECONOMIC REPORTS (<http://www.tradethenews.com/weekly-calendar.php>)

Date	ET	Release	For	Actual	Briefing.com	Consensus	Prior
Dec 14	08:30	CPI	Nov	0.7%	0.6%	0.3%	
Dec 14	08:30	Core CPI	Nov	0.2%	0.2%	0.2%	
Dec 14	09:15	Industrial Production	Nov	0.3%	0.1%	-0.5%	
Dec 14	09:15	Capacity Utilization	Nov	81.8%	81.7%	81.7%	