



Daily trading plan for Dec. 11, 2007 (FOMC day)

1. ESZ7 IN PREVIOUS DAY

Open	High	Low	Closing
1510.75	1520.75	1506.75	1518.75

2. PIVOTS FOR ESU7

	Daily	Weekly	Monthly	Yearly
R3	1538.08	1576.92	1679.33	1722.00
R2	1529.42	1545.08	1609.42	1583.50
R1	1524.08	1526.17	1546.58	1506.00
PPT	1515.08	1494.33	1476.67	1367.50
S1	1510.08	1475.42	1413.83	1290.00
S2	1501.42	1443.58	1343.92	1151.50
S3	1496.08	1424.67	1281.08	1074.00

3. FOCUS NUMBERS (intra-day Position trading)

Sell levels	Buying levels
1525.00(First Sell#)	1502-1500.75 (first Buy#)
1537.50-39.50 (Second Sell#)	1495.25-93.00 (second Buy#)

4. MAJOR RESISTANCE AND SUPPORT LEVELS FOR TODAY

Resistance	1525.00	1527.50	1533.25	1537.75	1539.75
Support	1513.50	1506.25	1495.00	1493.75	1490.75

5. DAILY OUTLOOK

The market has held up into the Fed meeting today. All eyes focus on today's Fed meeting, yesterday's market session was essentially a waiting period. ES opened strong, but later it mainly moved sideways. Volume was extremely light. It indicates that traders are reluctant to make large bets before today's announcement.

Today we may see that "BUY the rumor, SELL the news" move right after Fed announcement. High volatility should be expected.

ESZ7 Daily Chart



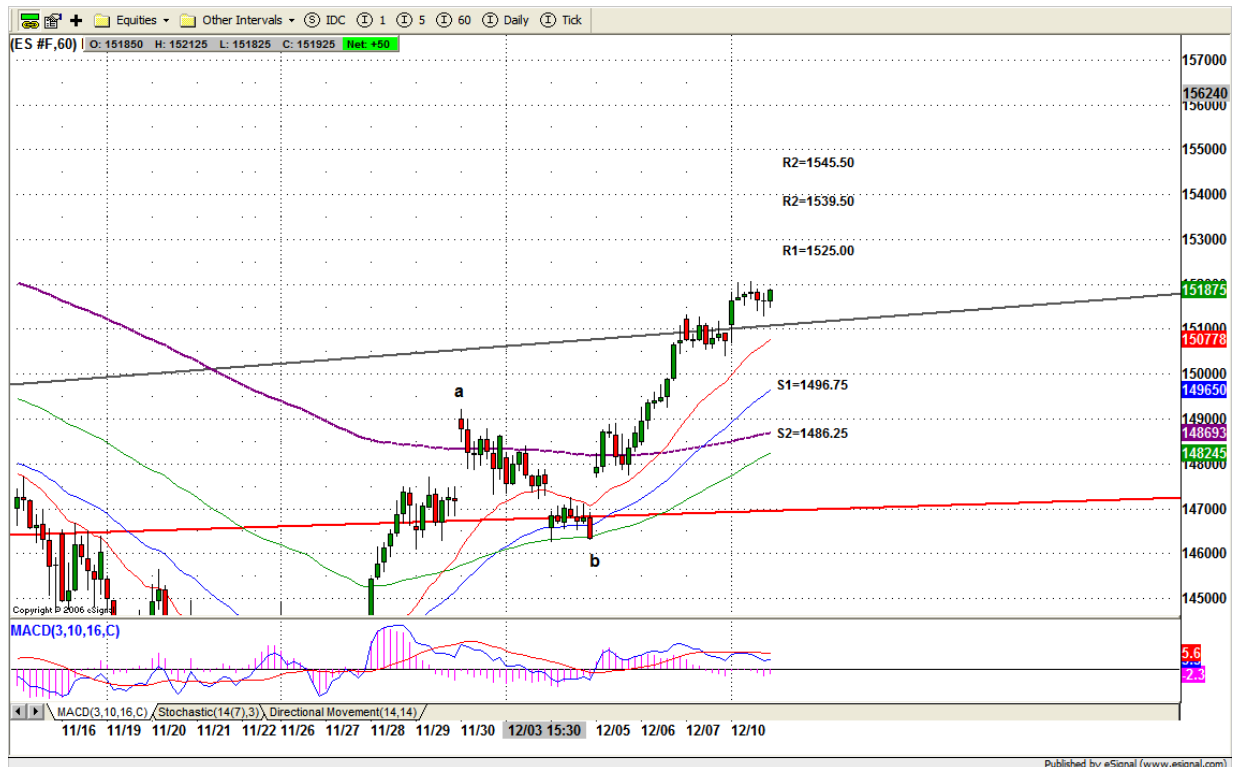
6. TRADING STRATEGY FOR Dec. 11, 2007

ES pushed price into its intermediate-term uptrend channel and managed to close above it. That indicates that C move hasn't completed yet. Today is Fed announcement. ES could continue going higher to 1539.50 if uptrend is strong at announcement, or it could shoot down to 1496-92 for testing its previous major breakout point first before it bounces up again. Nevertheless, Seasonal BULLS favor ES to complete its a-b-c pattern for our holidays

Today NEWBIES should stay on the sidelines.

Intraday swing position entry on short side:
1525.00 (Scalping) 1531.75 (agg) and 1539.50 (cons)
Intraday swing position entry on long side:
1512.50 (scalping) 1500.25 (agg) and 1494.50 (cons)

ESZ7 INTRADAY



7. PREDICTION FOR TODAY'S MOVEMENT

Current (interval=1.95)

1527.34	+2/8
1525.39	+1/8
1523.44	8/8
1521.48	7/8
1519.53	6/8
1517.58	5/8
1515.63	4/8
1513.67	3/8
1511.72	2/8
1509.77	1/8
1507.81	0/8
1505.86	-1/8
1503.91	-2/8

Up (Interval=3.90)

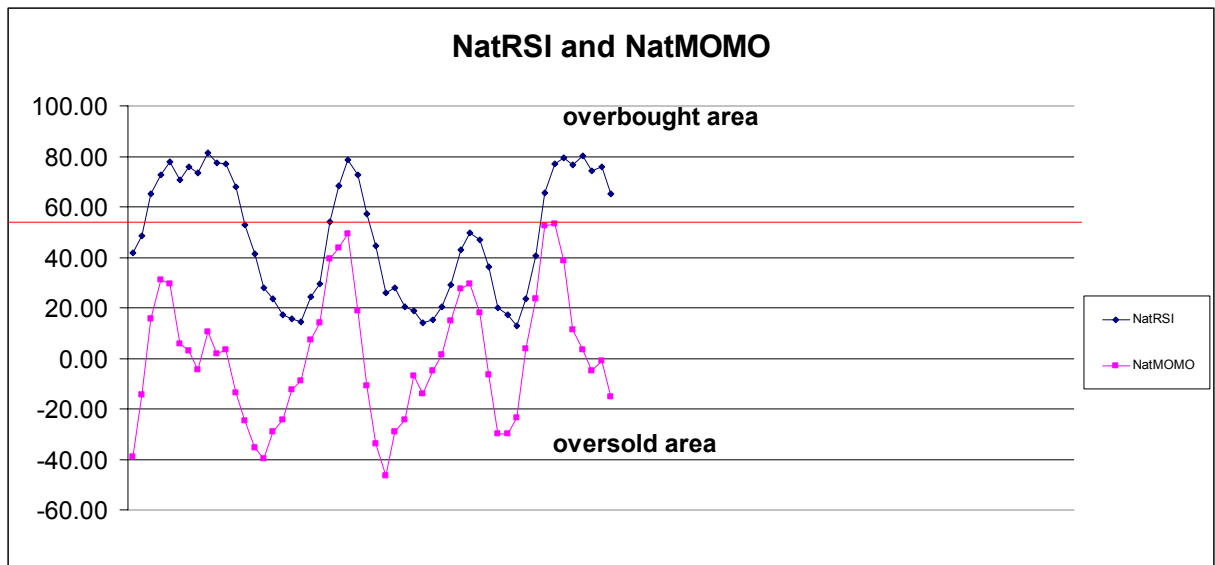
1539.06	+2/8
1535.16	+1/8
1531.25	8/8
1527.34	7/8
1523.44	6/8
1519.53	5/8
1515.63	4/8
1511.72	3/8
1507.81	2/8
1503.91	1/8
1500.00	0/8
1496.09	-1/8
1492.19	-2/8

Down (Interval=3.90)

1539.06	+2/8
1535.16	+1/8
1531.25	8/8
1527.34	7/8
1523.44	6/8
1519.53	5/8
1515.63	4/8
1511.72	3/8
1507.81	2/8
1503.91	1/8
1500.00	0/8
1496.09	-1/8
1492.19	-2/8

8. OTHER INDICATORS

NatRSI (1day)	NatRSI (5day)	NatMoMo	ATR 10	Waist number
0.78	0.64	-15.20	17.63	1514.75
overbought	neutral			



9. WEEKLY ECONOMIC REPORTS (<http://www.tradethenews.com/weekly-calendar.php>)

Date	ET	Release	For	Actual	Briefing.com	Consensus	Prior
Dec 11	10:00	Wholesale Inventories	Oct	0.5%	0.5%	0.8%	
Dec 11	14:15	FOMC policy statement					
Dec 12	08:30	Export Prices ex-ag.	Nov	NA	NA	0.5%	
Dec 12	08:30	Import Prices ex-oil	Nov	NA	NA	0.5%	
Dec 12	08:30	Trade Balance	Oct	-\$57.5B	-\$57.0B	-\$56.5B	
Dec 12	10:30	Crude Inventories	12/07	NA	NA	-7913K	
Dec 12	14:00	Treasury Budget	Nov	-\$100.0B	-\$75.0B	-\$75.6B	
Dec 13	08:30	Retail Sales	Nov	0.8%	0.5%	0.2%	
Dec 13	08:30	Retail Sales ex-auto	Nov	0.8%	0.6%	0.2%	
Dec 13	08:30	PPI	Nov	2.0%	1.5%	0.1%	
Dec 13	08:30	Core PPI	Nov	0.2%	0.2%	0.0%	
Dec 13	08:30	Initial Claims	12/08	340K	335K	338K	
Dec 13	10:00	Business Inventories	Oct	0.3%	0.3%	0.4%	
Dec 14	08:30	CPI	Nov	0.7%	0.6%	0.3%	
Dec 14	08:30	Core CPI	Nov	0.2%	0.2%	0.2%	
Dec 14	09:15	Industrial Production	Nov	0.3%	0.1%	-0.5%	
Dec 14	09:15	Capacity Utilization	Nov	81.8%	81.7%	81.7%	