



## Daily trading plan for Dec. 6, 2007

### 1. ESZ7 IN PREVIOUS DAY

Open	High	Low	Closing
1478.00	1489.00	1476.75	1487.00

### 2. PIVOTS FOR ESU7

	Daily	Weekly	Monthly	Yearly
R3	1504.00	1600.58	1679.33	1722.00
R2	1496.50	1546.42	1609.42	1583.50
R1	1491.75	1515.08	1546.58	1506.00
<b>PPT</b>	<b>1484.75</b>	<b>1460.92</b>	<b>1476.67</b>	<b>1367.50</b>
S1	1479.50	1429.58	1413.83	1290.00
S2	1472.00	1375.42	1343.92	1151.50
S3	1467.25	1344.08	1281.08	1074.00

### 3. FOCUS NUMBERS (intra-day Position trading)

Sell levels	Buying levels
1497-98.50(First Sell#)	1485-83.75 (first Buy#)
1510.75-12.50 (Second Sell#)	1477-75.50 (second Buy#)

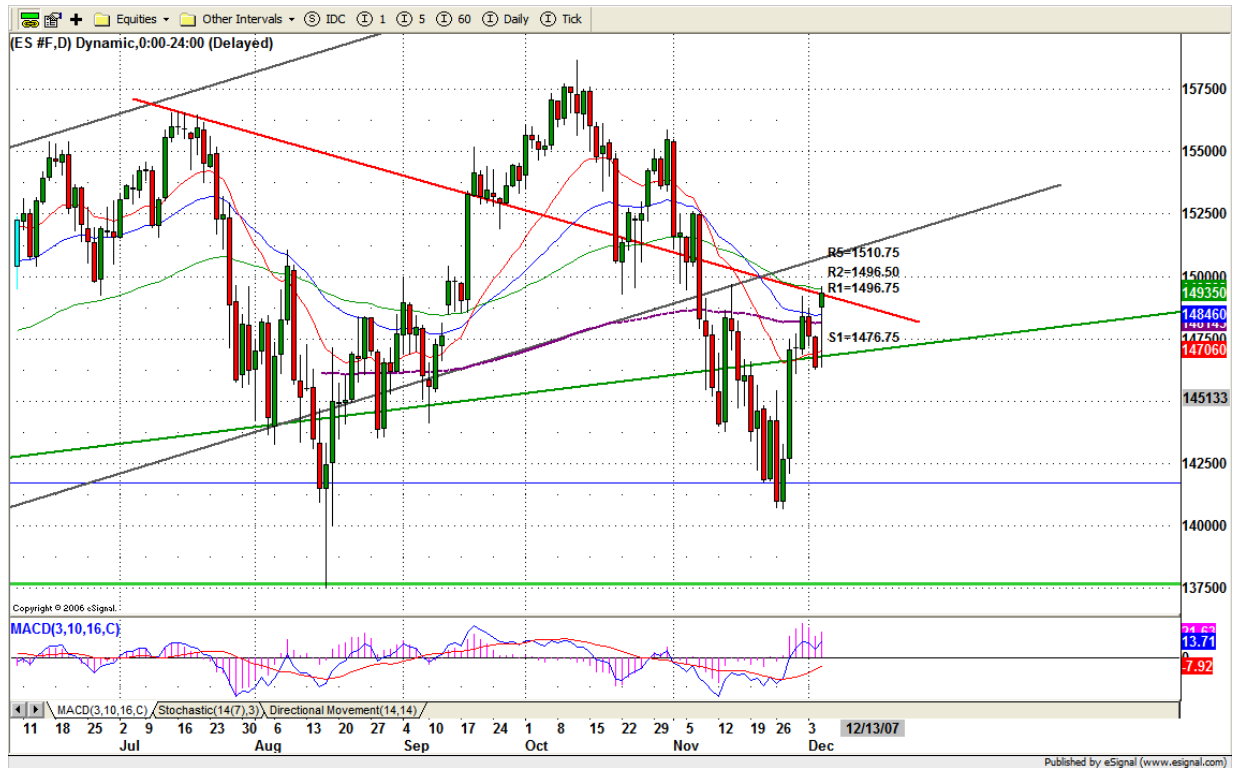
### 4. MAJOR RESISTANCE AND SUPPORT LEVELS FOR TODAY

<b>Resistance</b>	1496.75	1598.50	1501.25	1405.75	1515.25
<b>Support</b>	1479.75	1475.00	1470.25	1468.75	1464.75

## 5. DAILY OUTLOOK

Yesterday ES gapped up and stayed at top range for closing. It finally found a foot to move up. Right now 1462.50 could be the bottom of the up move to the C top. This countertrend push high is now underway. This push could last until Tuesday next week.

### ESZ7 Daily Chart



## 6. TRADING STRATEGY FOR Dec. 6, 2007

ES gapped up and held up the gap. As long as yesterday's gap holds, the countertrend move is underway. It could carry up as far as 1511-1520 or even higher until Tuesday next week for the FOMC announcement. Today a breakout continuation high could hold price above 1485.

Look for pullback to enter and stay long side.

**Intraday swing position entry on short side:**  
**1496.75 (Scalping) 1505.50 (agg) and 1512.50-15.25 (cons)**  
**Intraday swing position entry on long side:**  
**1485.75 (scalping) 1477.25 (agg) and 1472.50 (cons)**

### ESZ7 INTRADAY



## 7. PREDICTION FOR TODAY'S MOVEMENT

### Current (interval=1.95)

1496.09	+2/8
1494.14	+1/8
1492.19	8/8
1490.23	7/8
1488.28	6/8
1486.33	5/8
1484.38	4/8
1482.42	3/8
1480.47	2/8
1478.52	1/8
1476.56	0/8
1474.61	-1/8
1472.66	-2/8

### Up (Interval=3.90)

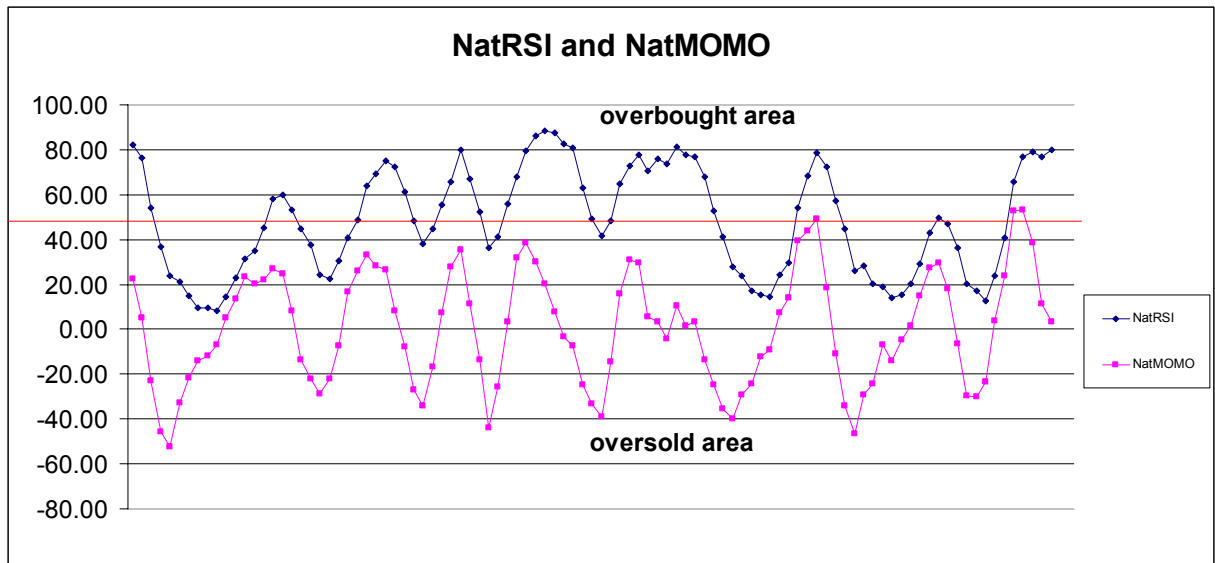
1507.81	+2/8
1503.91	+1/8
1500.00	8/8
1496.09	7/8
1492.19	6/8
1488.28	5/8
1484.38	4/8
1480.47	3/8
1476.56	2/8
1472.66	1/8
1468.75	0/8
1464.84	-1/8
1460.94	-2/8

### Down (Interval=1.95)

1488.28	+2/8
1486.33	+1/8
1484.38	8/8
1482.42	7/8
1480.47	6/8
1478.52	5/8
1476.56	4/8
1474.61	3/8
1472.66	2/8
1470.70	1/8
1468.75	0/8
1466.80	-1/8
1464.84	-2/8

## 8. OTHER INDICATORS

NatRSI (1day)	NatRSI (5day)	NatMoMo	ATR 10	Waist number
0.86	0.80	3.18	20.80	1482.50
overbought	overbought			



## 9. WEEKLY ECONOMIC REPORTS (<http://www.tradethenews.com/weekly-calendar.php>)

Date	ET	Release	For	Actual	Briefing.com	Consensus	Prior
Dec 06	08:30	<a href="#">Initial Claims</a>	12/01	335K	NA	352K	
Dec 07	08:30	<a href="#">Nonfarm Payrolls</a>	Nov	65K	75K	166K	
Dec 07	08:30	<a href="#">Unemployment Rate</a>	Nov	4.8%	4.8%	4.7%	
Dec 07	08:30	<a href="#">Hourly Earnings</a>	Nov	0.4%	0.3%	0.2%	
Dec 07	08:30	<a href="#">Average Workweek</a>	Nov	33.8	33.8	33.8	
Dec 07	10:00	<a href="#">Mich Sentiment-Prel.</a>	Dec	76.0	75.5	76.1	
Dec 07	15:00	<a href="#">Consumer Credit</a>	Oct	\$9.0B	\$5.0B	\$3.7B	