



## Daily trading plan for Nov. 16, 2007

### 1. ESZ7 IN PREVIOUS DAY

Open	High	Low	Closing
1470.00	1477.00	1446.75	1458.00

### 2. PIVOTS FOR ESU7

	Daily	Weekly	Monthly	Yearly
R3	1504.67	1577.67	1688.25	1722.00
R2	1490.83	1551.83	1637.50	1583.50
R1	1474.42	1503.42	1596.25	1506.00
<b>PPT</b>	<b>1460.58</b>	<b>1477.58</b>	<b>1545.50</b>	<b>1367.50</b>
S1	1444.17	1429.17	1504.25	1290.00
S2	1430.33	1403.33	1453.50	1151.50
S3	1413.92	1354.92	1412.25	1074.00

### 3. FOCUS NUMBERS (intra-day Position trading)

Sell levels	Buying levels
1476.25 (First Sell#)	1447.25 (first Buy#)
1487.50 (Second Sell#)	1428.50 (second Buy#)

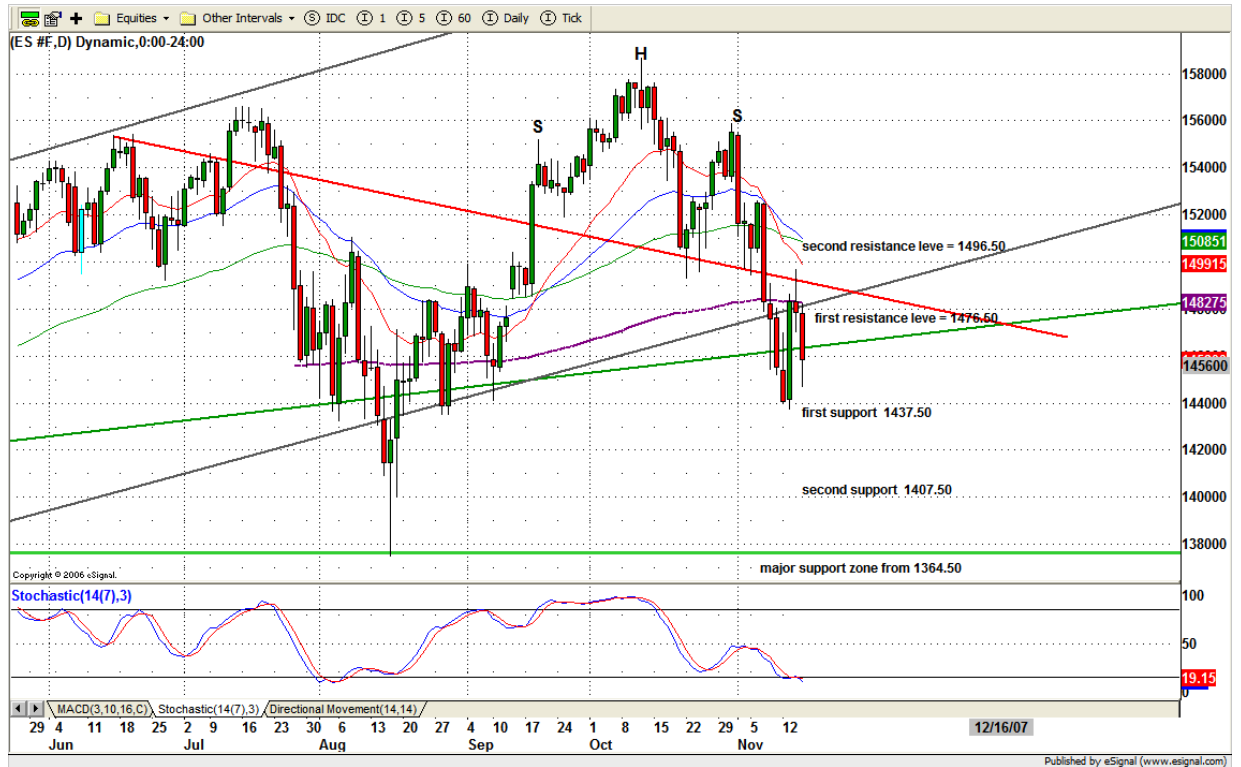
### 4. MAJOR RESISTANCE AND SUPPORT LEVELS FOR TODAY

<b>Resistance</b>	1462.25	1477.75	1487.75	1491.75	1497.50
<b>Support</b>	1450.50	1442.50	1434.75	1427.00	1417.25

## 5. DAILY OUTLOOK

ES only made one and half days bounce from oversold condition. It gapped down and stayed low for closing yesterday. That means investors are still nervous about credit crunch and the retail sales environment. Plus next week is short because of Thanksgiving holiday. This may also curtail buying. No one wants to place a big bet ahead of a holiday.

### ESZ7 Daily Chart



## 6. TRADING STRATEGY FOR Nov. 16, 2007

Today is an option expiration day. Most active move could be in early morning session. Rest of the day ES may go sideways until the end.

Early morning, 1466.25 is key line. Breakout 1466.25 level, ES could pop up to 1476 area. Fails to breakout 1466.25, it is likely for ES to go down to 1446-47 range or lower to 1440.25-37.50 range to fill Nov. 13's gap.

**Intraday swing position entry on short side:**  
**1470.50 (Scalping) 1476.50 (agg) and 1484.50 (cons)**  
**Intraday swing position entry on long side:**  
**1446.75 (scalping) 1434.75 (agg) and 1428.25(cons)**

### ESZ7 INTRADAY



## 7. PREDICTION FOR TODAY'S MOVEMENT

### Current (interval=3.90)

1492.19	+2/8
1488.28	+1/8
1484.38	8/8
1480.47	7/8
1476.56	6/8
1472.66	5/8
1468.75	4/8
1464.84	3/8
1460.94	2/8
1457.03	1/8
1453.13	0/8
1449.22	-1/8
1445.31	-2/8

### Up (Interval=3.90)

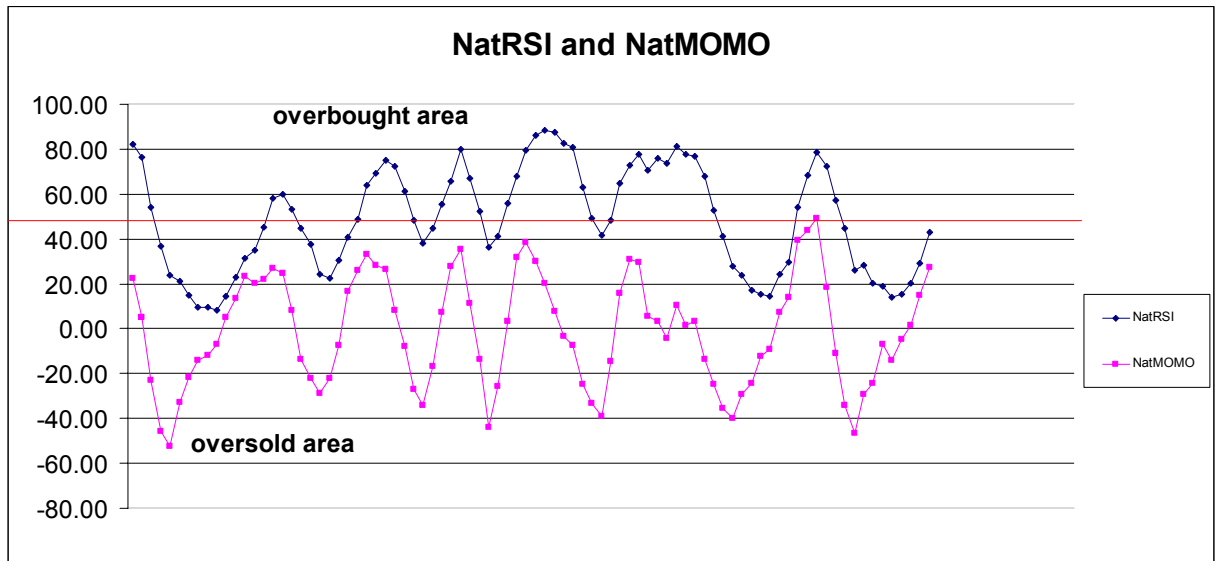
1492.19	+2/8
1488.28	+1/8
1484.38	8/8
1480.47	7/8
1476.56	6/8
1472.66	5/8
1468.75	4/8
1464.84	3/8
1460.94	2/8
1457.03	1/8
1453.13	0/8
1449.22	-1/8
1445.31	-2/8

### Down (Interval=3.90)

1476.56	+2/8
1472.66	+1/8
1468.75	8/8
1464.84	7/8
1460.94	6/8
1457.03	5/8
1453.13	4/8
1449.22	3/8
1445.31	2/8
1441.41	1/8
1437.50	0/8
1433.59	-1/8
1429.69	-2/8

## 8. OTHER INDICATORS

NatRSI (1day)	NatRSI (5day)	NatMoMo	ATR 10	Waist number
0.30	0.29	27.43	28.25	1464.00
neutral	neutral			



**9. WEEKLY ECONOMIC REPORTS** (<http://www.tradethenews.com/weekly-calendar.php>)

Date	ET	Release	For	Actual	Briefing.com	Consensus	Prior
Nov 16	09:00	Net Foreign Purchases	Sep				\$-69.3B
Nov 16	09:15	<a href="#">Industrial Production</a>	Oct		0.1%	0.1%	0.1%
Nov 16	09:15	<a href="#">Capacity Utilization</a>	Oct		82.0%	82.1%	82.1%