



Daily trading plan for Nov. 14, 2007

1. ESZ7 IN PREVIOUS DAY

Open	High	Low	Closing
1454.75	1486.25	1454.75	1483.25

2. PIVOTS FOR ESU7

	Daily	Weekly	Monthly	Yearly
R3	1526.25	1577.67	1688.25	1722.00
R2	1506.25	1551.83	1637.50	1583.50
R1	1494.75	1503.42	1596.25	1506.00
PPT	1474.75	1477.58	1545.50	1367.50
S1	1463.25	1429.17	1504.25	1290.00
S2	1443.25	1403.33	1453.50	1151.50
S3	1431.50	1354.92	1412.25	1074.00

3. FOCUS NUMBERS (intra-day Position trading)

Sell levels	Buying levels
1498.75(First Sell#)	1471.50 (first Buy#)
1512.50 (Second Sell#)	1456.25-53.25 (second Buy#)

4. MAJOR RESISTANCE AND SUPPORT LEVELS FOR TODAY

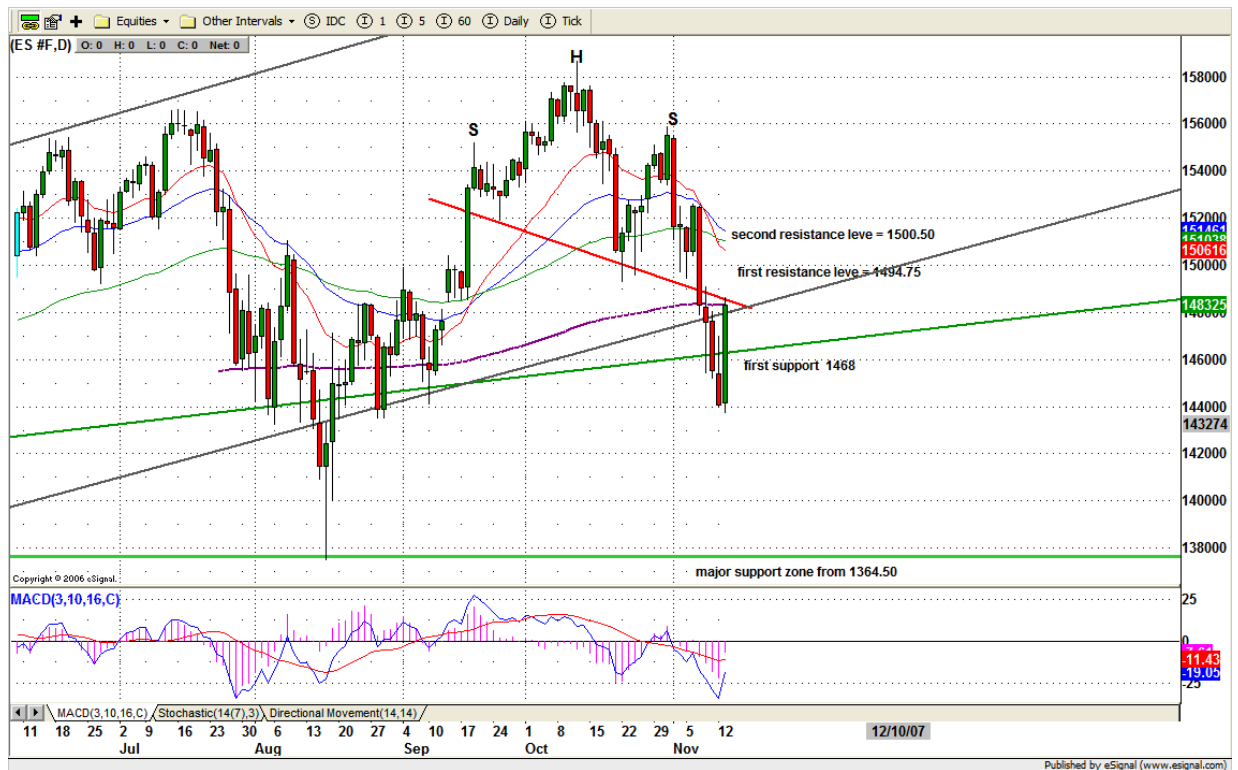
Resistance	1484.75	1494.75	1500.50	1506.25	1509.25
Support	1468.75	1460.25	1453.50	1450.50	1446.75

5. DAILY OUTLOOK

ES bounced up to test its broken H&S pattern neckline around 1483.50 level. It closed at high trading range with small increasing volume. We need to follow through to hold yesterday's gain to get a confirmation of the short term bottom.

If ES can hold above 1468.50 level and breakout yesterday's high 1486.25 level, it is likely to go higher to 1496-98.50 range before it reverses down again.

ESZ7 Daily Chart



6. TRADING STRATEGY FOR Nov. 14, 2007

Yesterday ES gaped up at open and held up the gap for higher closing. That is first bullish signal to indicate the short term trend reversal. But based on yesterday's volume, we need to get confirmation from today's trading following through on that move.

A Breakout 1486.25 level and hold above it indicates an upside continuation from yesterday. Fails to breakout 1486.25, it is likely for ES to retrace back down 1455 level again for option expiration move. Anything can happen due to option expiration week.

Intraday swing position entry on short side:
1487.25 (Scalping) 1498.50(agg) and 1512.50 (cons)
Intraday swing position entry on long side:
1471.75 (scalping) 1455.75 (agg) and 1446.25(cons)

ESZ7 INTRADAY



7. PREDICTION FOR TODAY'S MOVEMENT

Current (interval=3.90)

1492.19	+2/8
1488.28	+1/8
1484.38	8/8
1480.47	7/8
1476.56	6/8
1472.66	5/8
1468.75	4/8
1464.84	3/8
1460.94	2/8
1457.03	1/8
1453.13	0/8
1449.22	-1/8
1445.31	-2/8

Up (Interval=3.90)

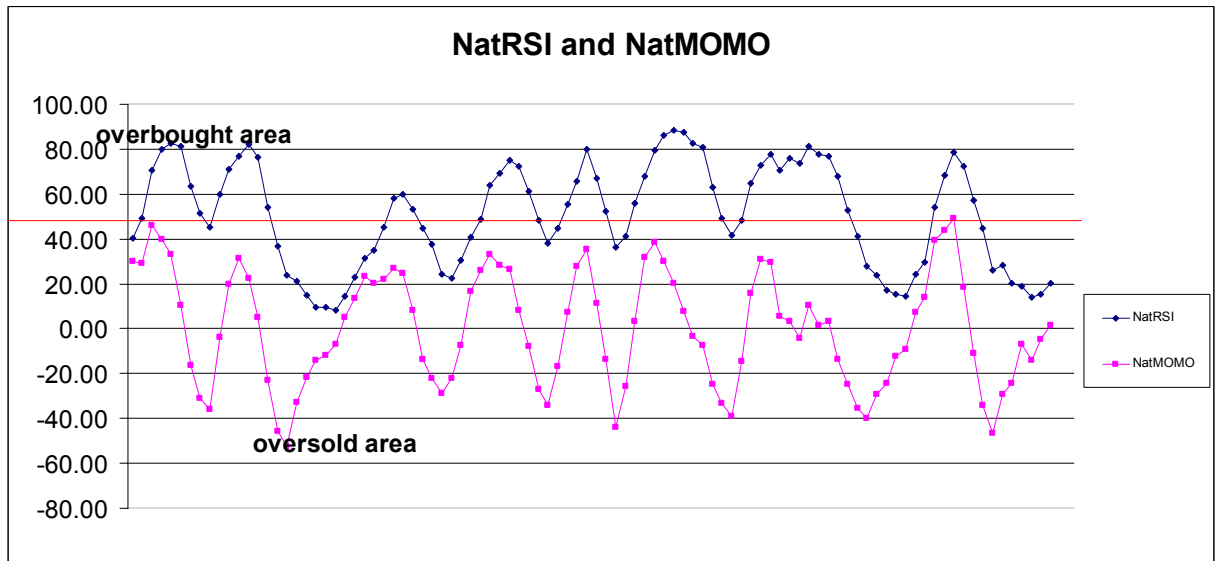
1507.81	+2/8
1503.91	+1/8
1500.00	8/8
1496.09	7/8
1492.19	6/8
1488.28	5/8
1484.38	4/8
1480.47	3/8
1476.56	2/8
1472.66	1/8
1468.75	0/8
1464.84	-1/8
1460.94	-2/8

Down (Interval=3.90)

1492.19	+2/8
1488.28	+1/8
1484.38	8/8
1480.47	7/8
1476.56	6/8
1472.66	5/8
1468.75	4/8
1464.84	3/8
1460.94	2/8
1457.03	1/8
1453.13	0/8
1449.22	-1/8
1445.31	-2/8

8. OTHER INDICATORS

NatRSI (1day)	NatRSI (5day)	NatMoMo	ATR 10	Waist number
0.95	0.20	1.34	28.00	1469.00
Overbought	neutral			



9. WEEKLY ECONOMIC REPORTS (<http://www.tradethenews.com/weekly-calendar.php>)

Date	ET	Release	For	Actual	Briefing.com	Consensus	Prior
Nov 14	08:30	Retail Sales	Oct	0.0%	0.2%	0.6%	
Nov 14	08:30	Retail Sales ex-auto	Oct	0.2%	0.3%	0.4%	
Nov 14	08:30	PPI	Oct	0.1%	0.2%	1.1%	
Nov 14	08:30	Core PPI	Oct	0.1%	0.2%	0.1%	
Nov 14	10:00	Business Inventories	Sep	0.6%	0.3%	0.1%	
Nov 14	10:30	Crude Inventories	11/09	NA	NA	-821K	
Nov 15	08:30	CPI	Oct	0.3%	0.3%	0.3%	
Nov 15	08:30	Core CPI	Oct	0.2%	0.2%	0.2%	
Nov 15	08:30	Initial Claims	11/10	320K	NA	317K	
Nov 15	08:30	NY Empire State Index	Nov	15.0	21.0	28.8	
Nov 15	12:00	Philadelphia Fed	Nov	4.0	6.0	6.8	
Nov 16	09:00	Net Foreign Purchases	Sep			\$-69.3B	
Nov 16	09:15	Industrial Production	Oct	0.1%	0.1%	0.1%	
Nov 16	09:15	Capacity Utilization	Oct	82.0%	82.1%	82.1%	