



Daily trading plan for Nov. 7, 2007

1. ESZ7 IN PREVIOUS DAY

Open	High	Low	Closing
1513.00	1526.00	1503.50	1525.00

2. PIVOTS FOR ESU7

	Daily	Weekly	Monthly	Yearly
R3	1555.33	1613.92	1688.25	1722.00
R2	1540.67	1586.33	1637.50	1583.50
R1	1532.83	1551.92	1596.25	1506.00
PPT	1518.17	1524.33	1545.50	1367.50
S1	1510.33	1489.92	1504.25	1290.00
S2	1495.67	1462.33	1453.50	1151.50
S3	1487.83	1427.92	1412.25	1074.00

3. FOCUS NUMBERS (intra-day Position trading)

Sell levels	Buying levels
1536.75-37.25 (First Sell#)	1513-14 (first Buy#)
1544.75-47.25 (Second Sell#)	1503.25-02.25 (second Buy#)

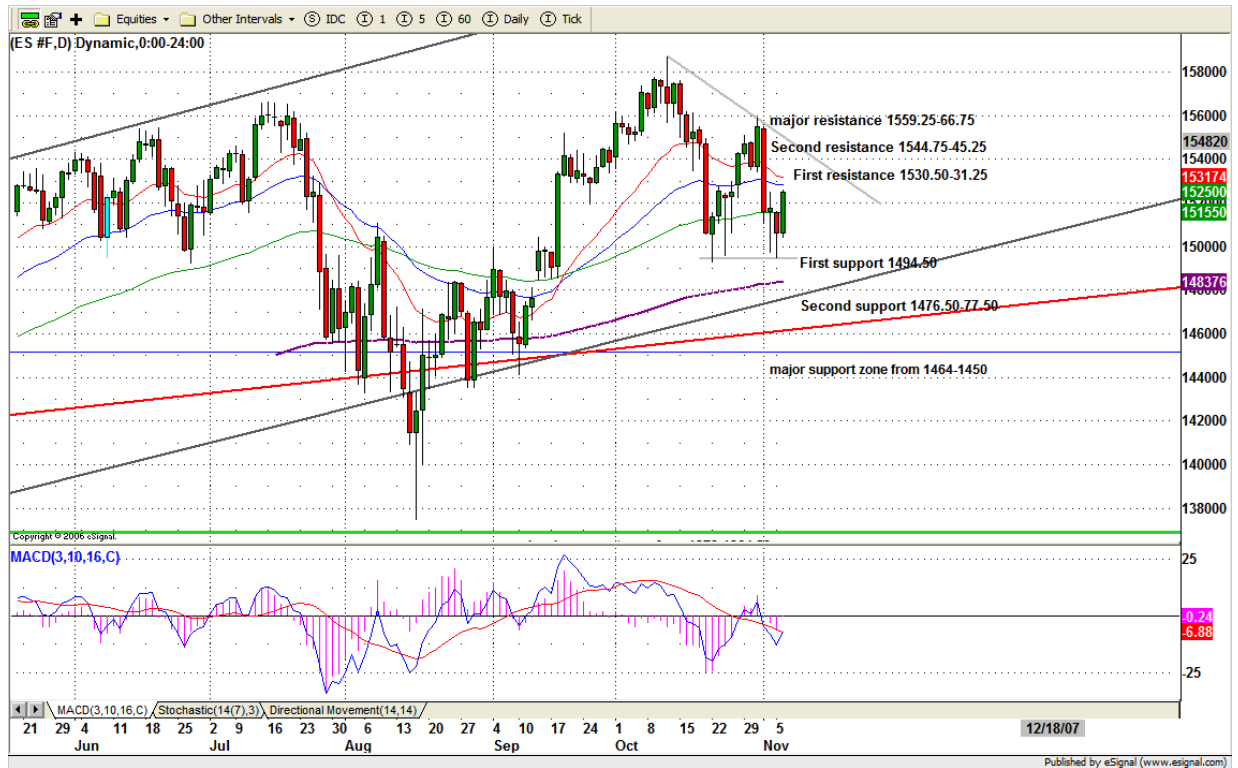
4. MAJOR RESISTANCE AND SUPPORT LEVELS FOR TODAY

Resistance	1526.25	1533.00	1536.75	1540.50	1545.25
Support	1518.25	1514.25	1510.25	1502.75	1495.75

5. DAILY OUTLOOK

ES made its oversold bounce yesterday. Even though it still stays below 20/40 daily moving average lines, it managed to close above 89 daily moving average line. Today and tomorrow it is likely for ES to move up further to retest first and second resistance level (see the chart below).

ESZ7 Daily Chart



6. TRADING STRATEGY FOR Nov. 7, 2007

ES gaped up at open and quickly moved down to fill the gap. In the afternoon it managed to breakout 1517.75 resistance level and closed at top range. Today we should see the continuation of yesterday's rally if 1515-13 range holds up in the morning session. There is an intraday double bottom pattern and ES broke its neckline yesterday. This double bottom pattern completion level should be around 1544.25-45.25 range. As long as that bullish pattern remains valid, ES will continue move up to 1531-33 or 1536.75-37 for testing. A break below 1500 will be bearish.

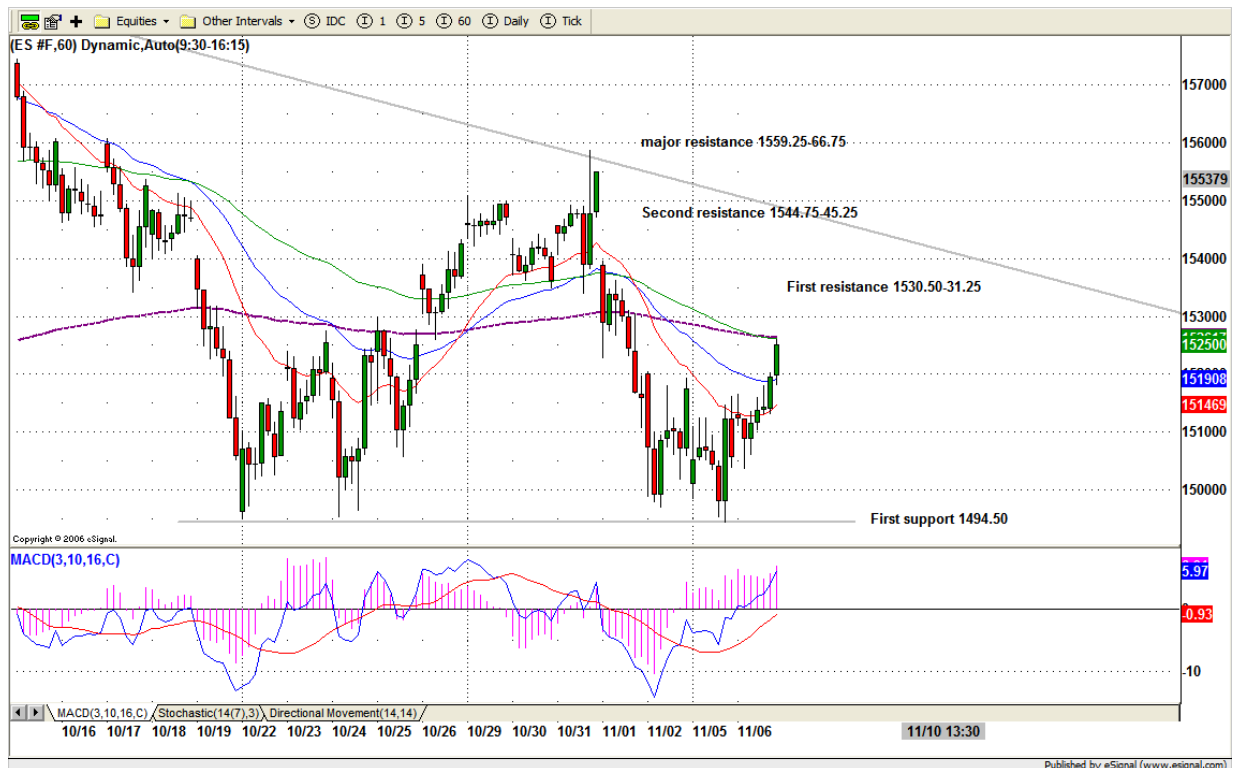
Intraday swing position entry on short side:

1531.25-33 (Scalping) 1536.75-37.50(agg) and 1544.75-45.25 (cons)

Intraday swing position entry on long side:

1514-13 (scalping) 1510.25-09.25 (agg) and 1503-02 (cons)

ESZ7 INTRADAY



7. PREDICTION FOR TODAY'S MOVEMENT

Current (interval=3.90)

1539.06	+2/8
1535.16	+1/8
1531.25	8/8
1527.34	7/8
1523.44	6/8
1519.53	5/8
1515.63	4/8
1511.72	3/8
1507.81	2/8
1503.91	1/8
1500.00	0/8
1496.09	-1/8
1492.19	-2/8

Up (Interval=3.90)

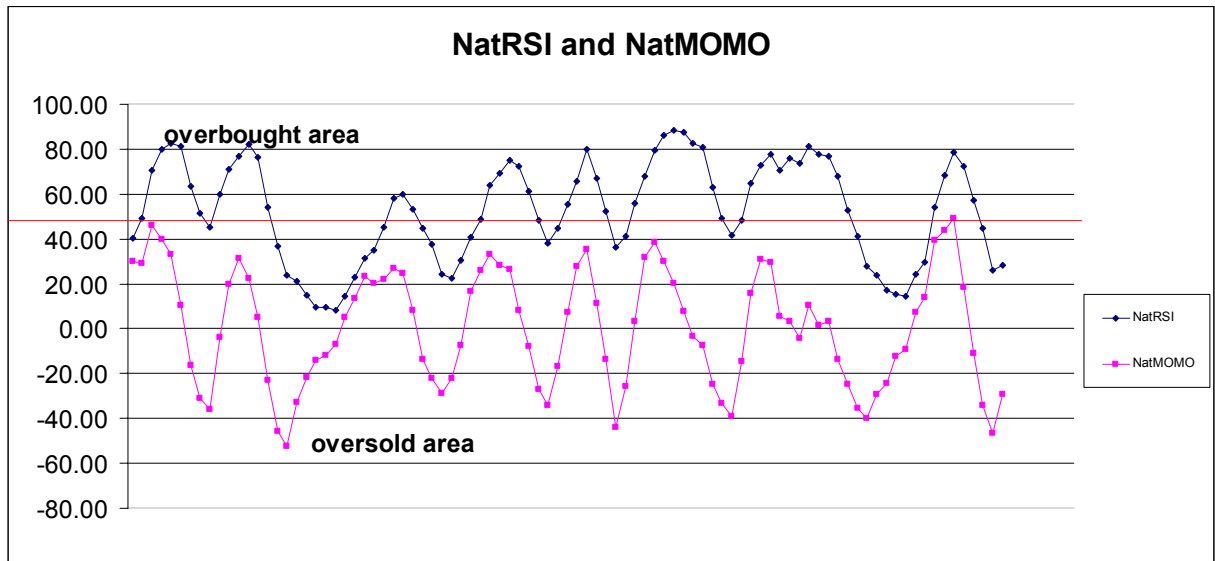
1554.69	+2/8
1550.78	+1/8
1546.88	8/8
1542.97	7/8
1539.06	6/8
1535.16	5/8
1531.25	4/8
1527.34	3/8
1523.44	2/8
1519.53	1/8
1515.63	0/8
1511.72	-1/8
1507.81	-2/8

Down (Interval=3.90)

1539.06	+2/8
1535.16	+1/8
1531.25	8/8
1527.34	7/8
1523.44	6/8
1519.53	5/8
1515.63	4/8
1511.72	3/8
1507.81	2/8
1503.91	1/8
1500.00	0/8
1496.09	-1/8
1492.19	-2/8

8. OTHER INDICATORS

NatRSI (1day)	NatRSI (5day)	NatMoMo	ATR 10	Waist number
0.77	0.28	-29.21	21.18	1519.00
neutral	neutral			



9. WEEKLY ECONOMIC REPORTS (<http://www.tradethenews.com/weekly-calendar.php>)

Date	ET	Release	For	Actual	Briefing.com	Consensus	Prior	Revised From
Nov 07	08:30	Productivity-Prel	Q3	2.7%	3.1%	2.6%		
Nov 07	10:00	Wholesale Inventories	Sep	0.2%	0.1%	0.1%		
Nov 07	10:30	Crude Inventories	11/02	NA	NA	-3894K		
Nov 07	15:00	Consumer Credit	Sep	\$14.0B	\$8.5B	\$12.2B		
Nov 08	08:30	Initial Claims	11/03	320K	NA	327K		
Nov 09	08:30	Export Prices ex-ag.	Oct	NA	NA	0.0%		
Nov 09	08:30	Import Prices ex-oil	Oct	NA	NA	-0.2%		
Nov 09	08:30	Trade Balance	Sep	-\$59.5B	-\$58.5B	-\$57.6B		
Nov 09	10:00	Mich Sentiment-Prel.	Nov	80.0	80.0	80.9		