



Daily trading plan for Oct. 26, 2007

1. ESZ7 IN PREVIOUS DAY

Open	High	Low	Closing
1523.75	1529.75	1505.50	1525.00

2. PIVOTS FOR ESU7

	Daily	Weekly	Monthly	Yearly
R3	1558.92	1621.33	1691.00	1722.00
R2	1544.33	1597.92	1621.50	1583.50
R1	1534.67	1551.83	1579.75	1506.00
PPT	1520.08	1528.42	1510.25	1367.50
S1	1510.42	1482.33	1468.50	1290.00
S2	1495.83	1458.92	1399.00	1151.50
S3	1486.17	1412.83	1357.25	1074.00

3. FOCUS NUMBERS (intra-day Position trading)

Sell levels	Buying levels
1535.75 (First Sell#)	1506.25 (first Buy#)
1548.50 (Second Sell#)	1501.25 (second Buy#)

4. MAJOR RESISTANCE AND SUPPORT LEVELS FOR TODAY

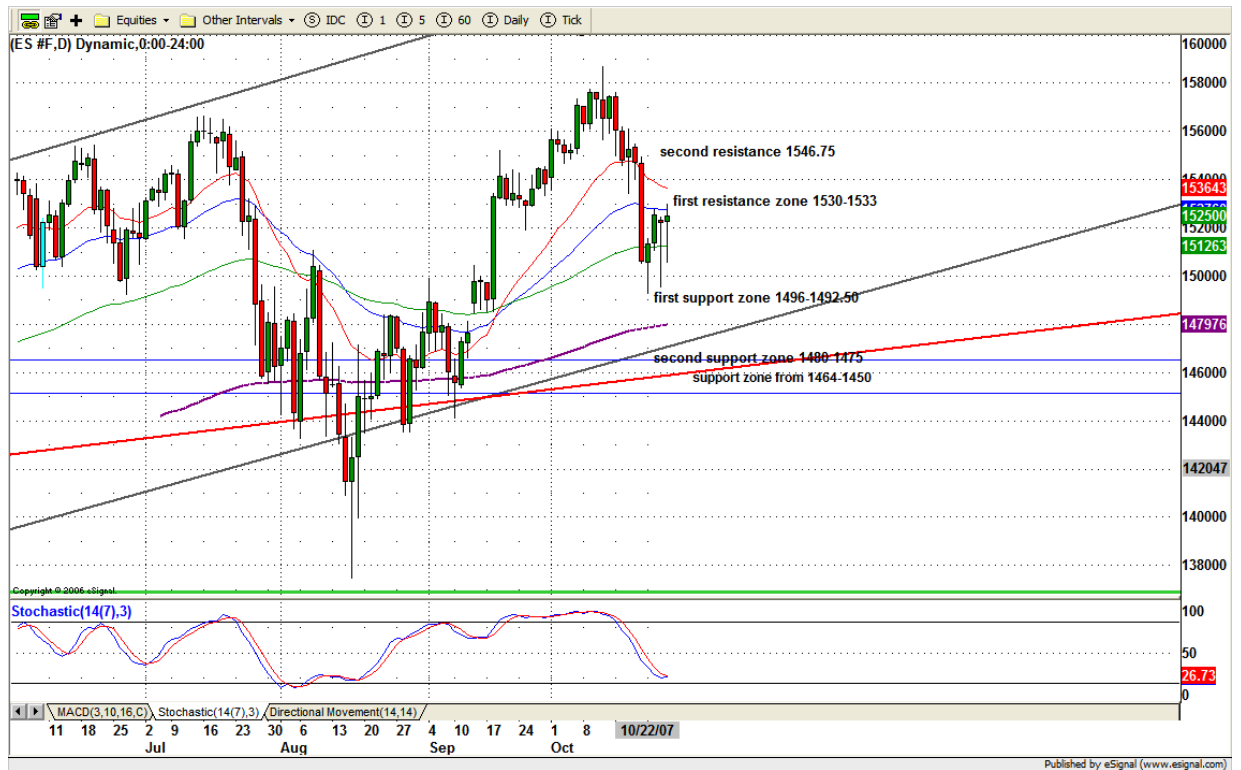
Resistance	1531.75	1532.50	1535.75	1545.25	1548.75
Support	1516.25	1510.50	1506.25	1501.75	1495.25

5. DAILY OUTLOOK

ES tried to form around support level above 1507. It came down hard last Friday, but in the past three days, has struggled to hold itself above 89 day moving average line and is fighting back for the control of the 20 and 40 day moving average lines which it lost last Friday.

Daily SST indicator approaches oversold territory. It could turn up. If it does, it could help to push ES higher. Both of the current resistance levels (1530-33 and 1546.75) could be retested. The coming 5 days will be wild and choppy, given earning season and next Wednesday's Fed interest rate announcement. The volatility won't go away soon.

ESZ7 Daily Chart



6. TRADING STRATEGY FOR Oct. 26, 2007

ES formed an ascending triangle pattern. As long as 1530-33 range hold price down, it is possible for ES to travel inside this triangle for several days. A break above 1533 level and we are likely to see 1535-40 or higher to 1546.75 to fill last Friday's gap. However if ES breakdown 1507-06 range, it is possible to resume next down trend move.

Intraday swing position entry on short side:
1531.25 -33 (Scalping) 38-1540.25 (agg) and 1546.75(cons)
Intraday swing position entry on long side:
1516.25 (scalping) 1506.25 (agg) and 1501-1499.25(cons)

ESZ7 INTRADAY



7. PREDICTION FOR TODAY'S MOVEMENT

Current (interval=3.90)

1539.06	+2/8
1535.16	+1/8
1531.25	8/8
1527.34	7/8
1523.44	6/8
1519.53	5/8
1515.63	4/8
1511.72	3/8
1507.81	2/8
1503.91	1/8
1500.00	0/8
1496.09	-1/8
1492.19	-2/8

Up (Interval=3.90)

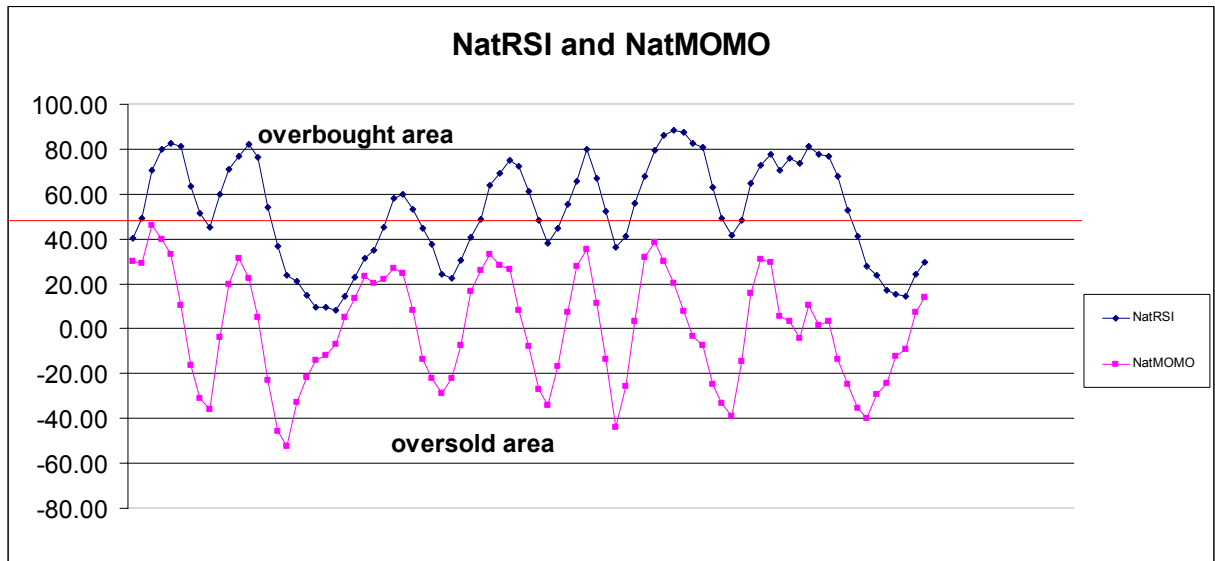
1554.69	+2/8
1550.78	+1/8
1546.88	8/8
1542.97	7/8
1539.06	6/8
1535.16	5/8
1531.25	4/8
1527.34	3/8
1523.44	2/8
1519.53	1/8
1515.63	0/8
1511.72	-1/8
1507.81	-2/8

Down (Interval=3.90)

1539.06	+2/8
1535.16	+1/8
1531.25	8/8
1527.34	7/8
1523.44	6/8
1519.53	5/8
1515.63	4/8
1511.72	3/8
1507.81	2/8
1503.91	1/8
1500.00	0/8
1496.09	-1/8
1492.19	-2/8

8. OTHER INDICATORS

NatRSI (1day)	NatRSI (5day)	NatMoMo	ATR 10	Waist number
0.52	0.29	13.97	21.13	1524.38
neutral	neutral			



9. WEEKLY ECONOMIC REPORTS (<http://www.tradethenews.com/weekly-calendar.php>)

Date	ET	Release	For	Actual	Briefing.com	Consensus	Prior
Oct 26	10:00	Mich Sentiment-Rev.	Oct		82.0	82.5	82.0