



Daily trading plan for Oct. 25, 2007

1. ESZ7 IN PREVIOUS DAY

Open	High	Low	Closing
1519.25	1524.50	1495.25	1522.00

2. PIVOTS FOR ESU7

	Daily	Weekly	Monthly	Yearly
R3	1561.83	1621.33	1691.00	1722.00
R2	1543.17	1597.92	1621.50	1583.50
R1	1532.58	1551.83	1579.75	1506.00
PPT	1513.92	1528.42	1510.25	1367.50
S1	1503.33	1482.33	1468.50	1290.00
S2	1484.67	1458.92	1399.00	1151.50
S3	1474.08	1412.83	1357.25	1074.00

3. FOCUS NUMBERS (intra-day Position trading)

Sell levels	Buying levels
1528.25-31.75 (First Sell#)	1513.25-10.75 (first Buy#)
1546.75 (Second Sell#)	1502.25-1499.25 (second Buy#)

4. MAJOR RESISTANCE AND SUPPORT LEVELS FOR TODAY

Resistance	1529.75	1532.50	1535.75	1543.25	1546.75
Support	1513.25	1510.50	1502.25	1495.75	1492.25

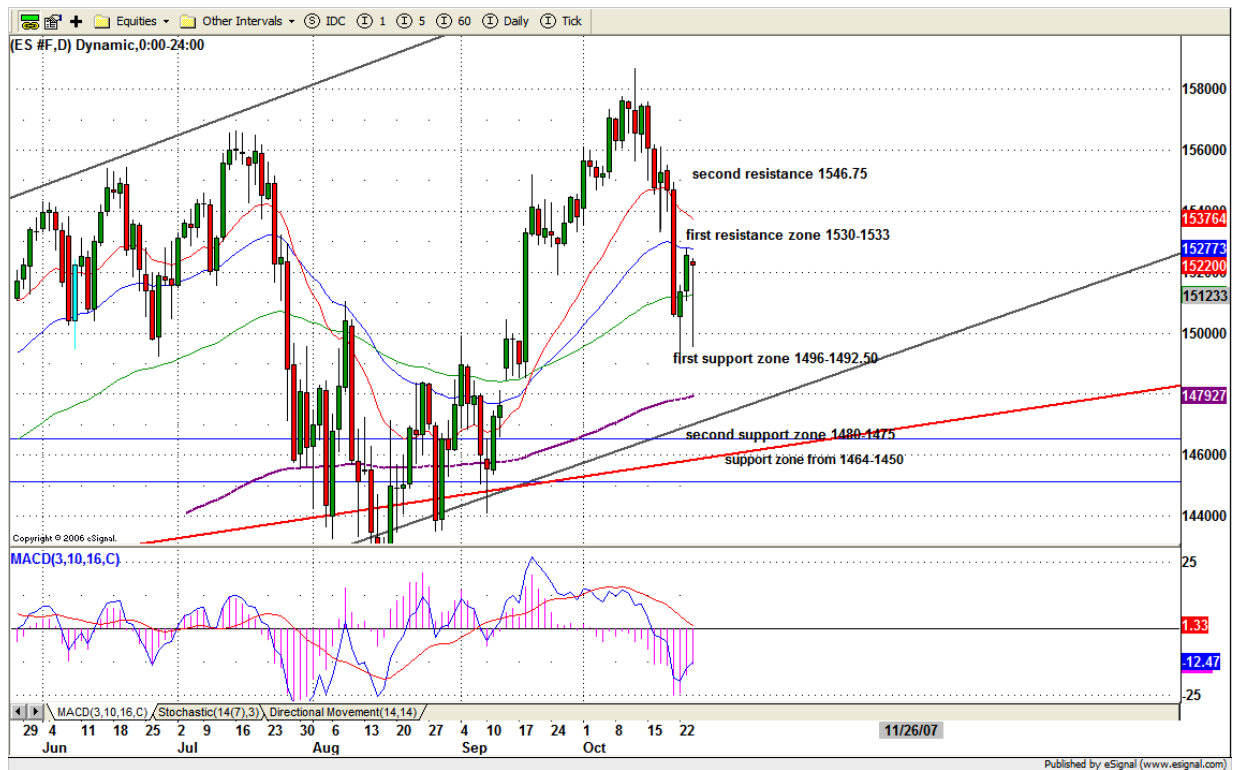
5. DAILY OUTLOOK

ES rebounded again after it had a sharp decline in the morning session. Afternoon market rally looked impressive, but breadth remained negative, down volume still was ahead of up volume. It looks like ES is still in countertrend move process. The reason for this, 1528-1531.75 level supposed to be seen yesterday, the counter move structure hasn't been fully completed.

Today ES can continue moving high to retest 1528-31.757 range, if later it can hold the price up to breakout this range, it is likely for ES to move higher to try to fill last Friday's gap at 1546.75

If ES fails to breakout 1528-31.75 range, instead breaking down 1507.50 level and close below it, then the next leg down should be set to start.

ESZ7 Daily Chart



6. TRADING STRATEGY FOR Oct. 25, 2007

ES gapped down at open due to MER taking an \$8 billion write-down from their book, plus existing home sale report was not good. But in the afternoon, it quickly recovered the loss and rallied again on a Fed rate cut rumor. Market is in a big stress mode. The earning season and the coming Wednesday's Fed announcement contribute to this volatility.

Today ES still needs to hold price above 1516.25 in the morning and push price back up to retest 1528-31 range in the morning. If later on ES can successfully breakout that range, 1540-46.75 could be seen in the afternoon. Fails to breakout, it is possible for ES to repeat yesterday's range.

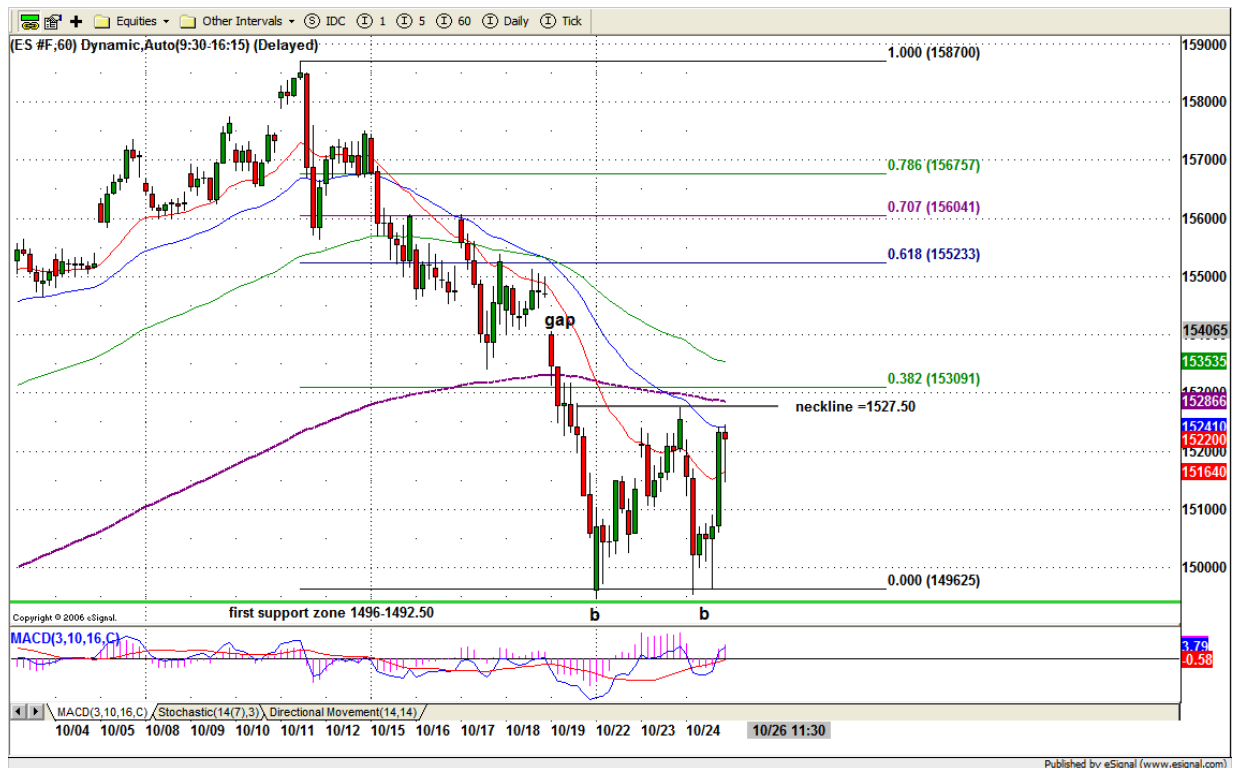
Intraday swing position entry on short side:

1528.25 – 31.25 (Scalping) 1540.25 (agg) and 1546.75(cons)

Intraday swing position entry on long side:

1514.75-12.50 (scalping) 1510.25-07.75 (agg) and 1501-1499.25(cons)

ES7 INTRADAY



7. PREDICTION FOR TODAY'S MOVEMENT

Current (interval=3.90)

1539.06	+2/8
1535.16	+1/8
1531.25	8/8
1527.34	7/8
1523.44	6/8
1519.53	5/8
1515.63	4/8
1511.72	3/8
1507.81	2/8
1503.91	1/8
1500.00	0/8
1496.09	-1/8
1492.19	-2/8

Up (Interval=3.90)

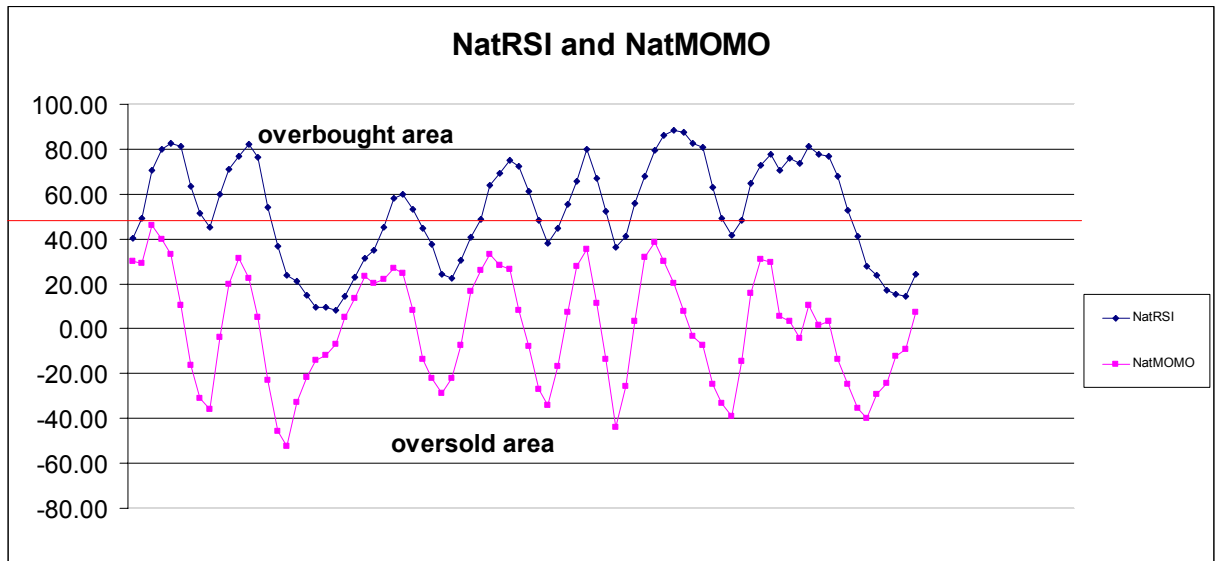
1554.69	+2/8
1550.78	+1/8
1546.88	8/8
1542.97	7/8
1539.06	6/8
1535.16	5/8
1531.25	4/8
1527.34	3/8
1523.44	2/8
1519.53	1/8
1515.63	0/8
1511.72	-1/8
1507.81	-2/8

Down (Interval=3.90)

1539.06	+2/8
1535.16	+1/8
1531.25	8/8
1527.34	7/8
1523.44	6/8
1519.53	5/8
1515.63	4/8
1511.72	3/8
1507.81	2/8
1503.91	1/8
1500.00	0/8
1496.09	-1/8
1492.19	-2/8

8. OTHER INDICATORS

NatRSI (1day)	NatRSI (5day)	NatMoMo	ATR 10	Waist number
0.55	0.25	7.32	21.75	1520.63
neutral	oversold			



9. WEEKLY ECONOMIC REPORTS (<http://www.tradethenews.com/weekly-calendar.php>)

Date	ET	Release	For	Actual	Briefing.com	Consensus	Prior
Oct 25	08:30	Durable Orders	Sep	2.0%	1.5%	-4.9%	
Oct 25	08:30	Initial Claims	10/20	320K	NA	337K	
Oct 25	10:00	New Home Sales	Sep	780K	785K	795K	
Oct 26	10:00	Mich Sentiment-Rev.	Oct	82.0	82.5	82.0	