



## Daily trading plan for Oct. 16, 2007

### 1. ESZ7 IN PREVIOUS DAY

Open	High	Low	Closing
1573.75	1574.50	1550.00	1560.25

### 2. PIVOTS FOR ESU7

	Daily	Weekly	Monthly	Yearly
R3	1597.67	1617.67	1691.00	1722.00
R2	1586.08	1595.58	1621.50	1583.50
R1	1573.17	1583.17	1579.75	1506.00
<b>PPT</b>	<b>1561.58</b>	<b>1561.08</b>	<b>1510.25</b>	<b>1367.50</b>
S1	1548.67	1548.67	1468.50	1290.00
S2	1537.08	1526.58	1399.00	1151.50
S3	1524.17	1514.17	1357.25	1074.00

### 3. FOCUS NUMBERS (intra-day Position trading)

Sell levels	Buying levels
1572.25 (First Sell#)	1548.25(first Buy#)
1582.25(Second Sell#)	1538.25 (second Buy#)

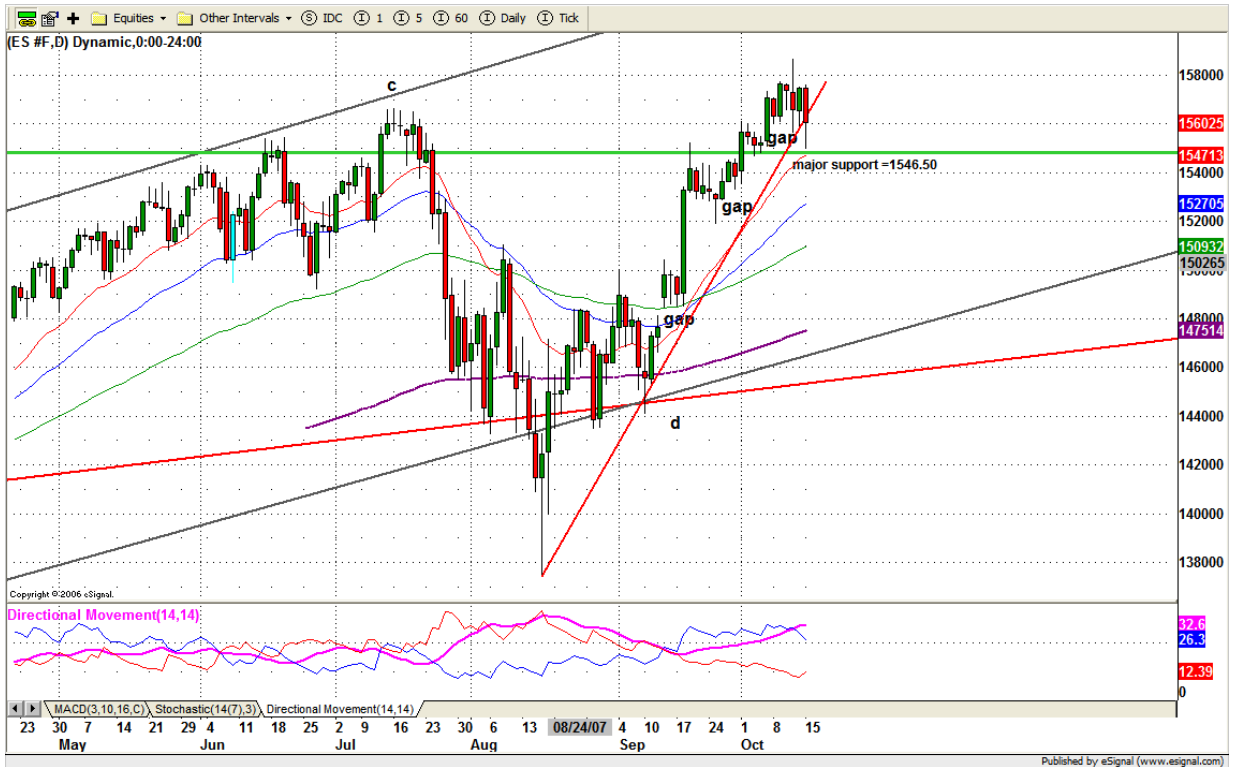
### 4. MAJOR RESISTANCE AND SUPPORT LEVELS FOR TODAY

<b>Resistance</b>	1562.25	1572.50	1574.25	1579.75	1582.25
<b>Support</b>	1555.25	1548.25	1542.00	1538.25	1536.25

## 5. DAILY OUTLOOK

ES sold off again and confirmed that last Friday's rally mainly was a bounce or retracement. ES finally filled Oct.5 gap at 1552 level and managed to bounce from it to the end. Today we may see a little downside continuation or sideways until ES finds a base for moving back up 1568-72 for testing.

### ESZ7 Daily Chart



## 6. TRADING STRATEGY FOR Oct. 16, 2007

ES broke down its Aug. 16 uptrend line (Red) and stayed below for closing yesterday. It was a bearish sign. But major support level still remains intact. We haven't seen it broken yet. Today if ES can hold price above 1552 firmly, it is possible for it to move up to retest 1568-72 range. Because ES still misses one more push on the downside, we are still looking for short entry around 1568-72 range for target a double bottom area 1550-48 range.

**Intraday swing position entry on short side:**  
**1561.75(Scalping) 1572.25 (agg) and 1582.25(cons)**  
**Intraday swing position entry on long side:**  
**1552.25 (scalping) 1546.50 (agg) and 1538.25 (cons)**

### ESZ7 INTRADAY



## 7. PREDICTION FOR TODAY'S MOVEMENT

### Current (interval=3.90)

1585.94	+2/8
1582.03	+1/8
1578.13	8/8
1574.22	7/8
1570.31	6/8
1566.41	5/8
1562.50	4/8
1558.59	3/8
1554.69	2/8
1550.78	1/8
1546.88	0/8
1542.97	-1/8
1539.06	-2/8

### Up (Interval=3.90)

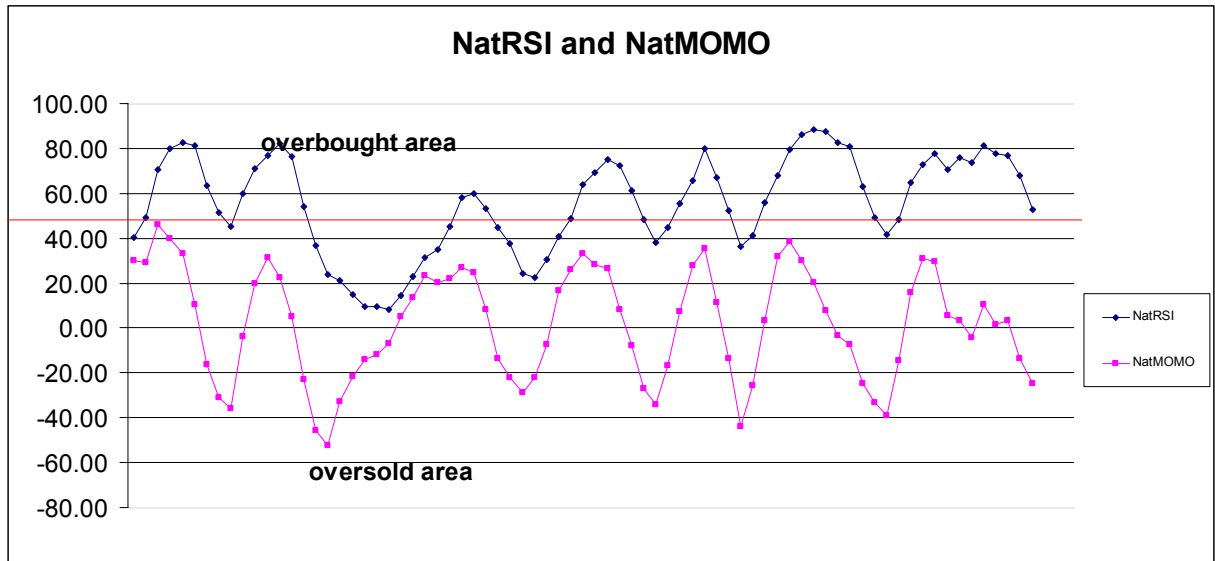
1585.94	+2/8
1582.03	+1/8
1578.13	8/8
1574.22	7/8
1570.31	6/8
1566.41	5/8
1562.50	4/8
1558.59	3/8
1554.69	2/8
1550.78	1/8
1546.88	0/8
1542.97	-1/8
1539.06	-2/8

### Down (Interval=3.90)

1570.31	+2/8
1566.41	+1/8
1562.50	8/8
1558.59	7/8
1554.69	6/8
1550.78	5/8
1546.88	4/8
1542.97	3/8
1539.06	2/8
1535.16	1/8
1531.25	0/8
1527.34	-1/8
1523.44	-2/8

## 8. OTHER INDICATORS

NatRSI (1day)	NatRSI (5day)	NatMoMo	ATR 10	Waist number
0.22	0.52	-24.72	14.00	1567.13
neutral	neutral			



## 9. WEEKLY ECONOMIC REPORTS (<http://www.tradethenews.com/weekly-calendar.php>)

Date	ET	Release	For	Actual	Briefing.com	Consensus	Prior
Oct 16	09:00	Net Foreign Purchases	Aug		0.1%	0.1%	0.2%
Oct 16	09:15	Industrial Production	Sep		0.1%	0.1%	0.2%
Oct 16	09:15	Capacity Utilization	Sep		82.2%	82.2%	82.2%
Oct 17	08:30	CPI	Sep		0.2%	0.2%	-0.1%
Oct 17	08:30	Core CPI	Sep		0.2%	0.2%	0.2%
Oct 17	08:30	Housing Starts	Sep		1300K	1285K	1331K
Oct 17	08:30	Building Permits	Sep		1310K	1300K	1322K
Oct 17	10:30	Crude Inventories	10/12		NA	NA	NA
Oct 17	14:00	Fed's Beige Book					
Oct 18	08:30	Initial Claims	10/13		315K	NA	308K
Oct 18	10:00	Leading Indicators	Sep		0.4%	0.4%	-0.6%
Oct 18	10:00	Philadelphia Fed	Oct		7.0	8.0	10.9