



Daily trading plan for Oct. 11, 2007

1. ESZ7 IN PREVIOUS DAY

Open	High	Low	Closing
1572.00	1576.00	1565.25	1573.25

2. PIVOTS FOR ESU7

	Daily	Weekly	Monthly	Yearly
R3	1588.50	1617.67	1691.00	1722.00
R2	1582.25	1595.58	1621.50	1583.50
R1	1577.75	1583.17	1579.75	1506.00
PPT	1571.50	1561.08	1510.25	1367.50
S1	1567.00	1548.67	1468.50	1290.00
S2	1560.75	1526.58	1399.00	1151.50
S3	1556.25	1514.17	1357.25	1074.00

3. FOCUS NUMBERS (intra-day Position trading)

Sell levels	Buying levels
1577.25-78.25 (First Sell#)	1563.25 (first Buy#)
1583.25-86.25 (Second Sell#)	1556.25 (second Buy#)

4. MAJOR RESISTANCE AND SUPPORT LEVELS FOR TODAY

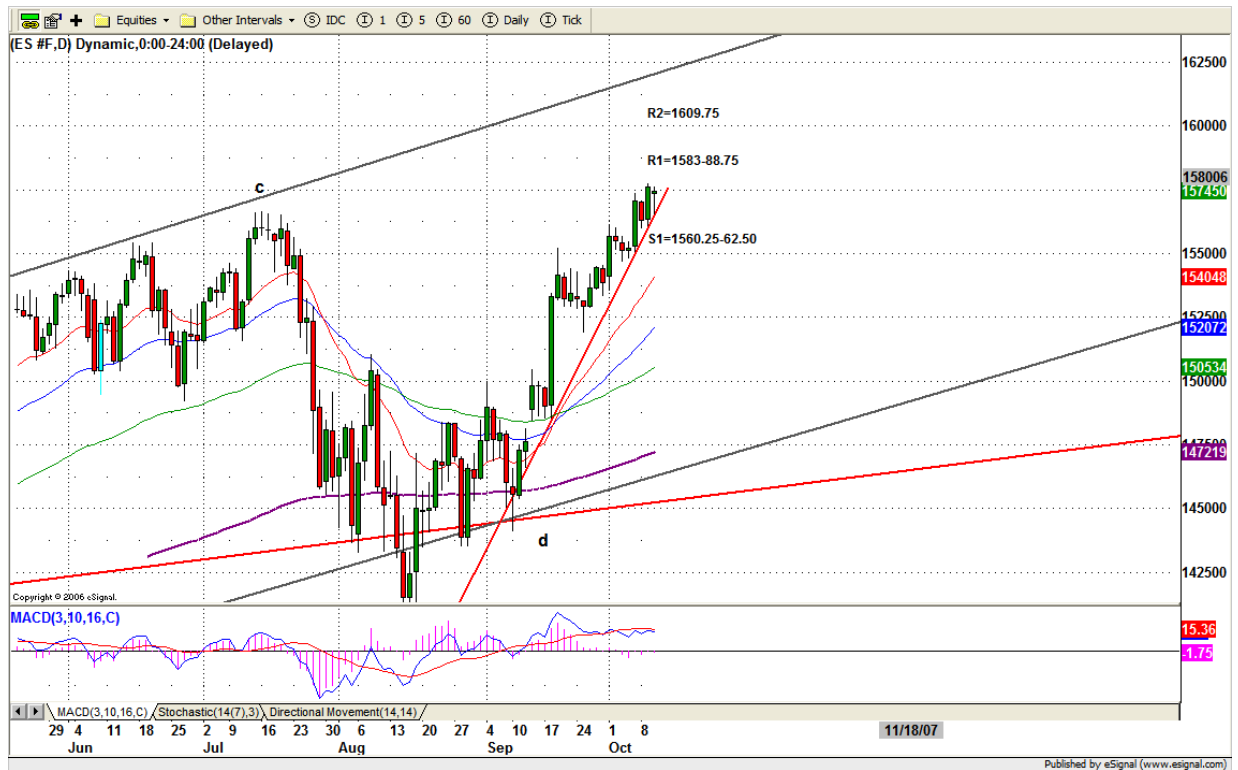
Resistance	1577.75	1579.75	1583.25	1588.50	1595.50
Support	1571.25	1567.00	1563.25	1560.25	1556.50

5. DAILY OUTLOOK

The overall market trend is up since mid-Aug. and we haven't seen any signs of significant weakness yet. Despite the bullish up move, ES is too overbought. Every time it makes a new high, we will see the sellers.

Yesterday ES made an inside day with a minor loss. It mainly performed a consolidation move. Today it could make a new high to 1583 if ES breakout 1577.50 level or it could breakdown its key support range 1568-67 again to move down to retest 1556 and fill the gap around 1552. Currently ES is in very high market structure level, it is too strong for short positions.

ESZ7 Daily Chart



6. TRADING STRATEGY FOR Oct. 11, 2007

ES pulled back into its uptrend line and bounced up for closing. Today we may see price go higher if early report is good. Fails to breakout 1577.50 level, ES could pull back to repeat yesterday's range. Any breakdown 1568-67 range will trigger stop run and push price down to 1556.50 or fill the gap around 1552.25 area.

Intraday swing position entry on short side:
1579.75(Scalping) 1583.75 (agg) and 1588.75-85 (cons)
Intraday swing position entry on long side:
1563.25 (scalping) 1556.75 (agg) and 1552.25(cons)

ESZ7 INTRADAY



7. PREDICTION FOR TODAY'S MOVEMENT

Current (interval=0.93)

1576.17	+2/8
1575.20	+1/8
1574.22	8/8
1573.24	7/8
1572.27	6/8
1571.29	5/8
1570.31	4/8
1569.34	3/8
1568.36	2/8
1567.38	1/8
1566.41	0/8
1565.43	-1/8
1564.45	-2/8

Up (Interval=1.95)

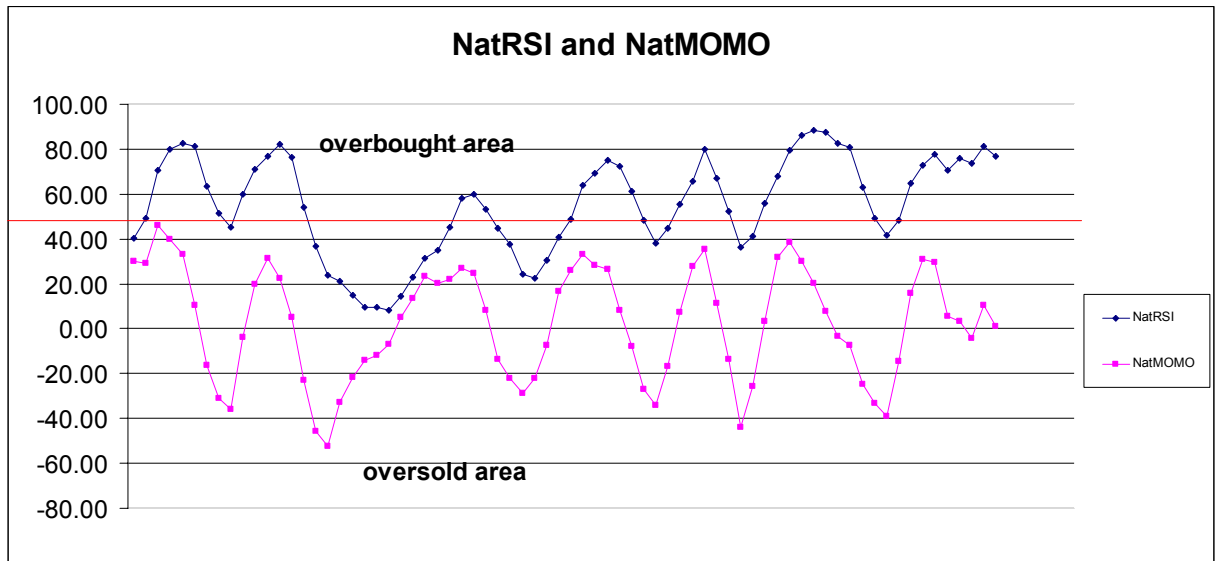
1589.84	+2/8
1587.89	+1/8
1585.94	8/8
1583.98	7/8
1582.03	6/8
1580.08	5/8
1578.13	4/8
1576.17	3/8
1574.22	2/8
1572.27	1/8
1570.31	0/8
1568.36	-1/8
1566.41	-2/8

Down (Interval=1.95)

1582.03	+2/8
1580.08	+1/8
1578.13	8/8
1576.17	7/8
1574.22	6/8
1572.27	5/8
1570.31	4/8
1568.36	3/8
1566.41	2/8
1564.45	1/8
1562.50	0/8
1560.55	-1/8
1558.59	-2/8

8. OTHER INDICATORS

NatRSI (1day)	NatRSI (5day)	NatMoMo	ATR 10	Waist number
0.54	0.77	1.64	11.65	1572.63
neutral	overbought			



9. WEEKLY ECONOMIC REPORTS (<http://www.tradethenews.com/weekly-calendar.php>)

Date	ET	Release	For	Actual	Briefing.com	Consensus	Prior
Oct 10	10:00	Wholesale Inventories	Aug		0.2%	0.3%	0.2%
Oct 10	10:30	Crude Inventories	10/05		NA	NA	1138K
Oct 11	08:30	Export Prices ex-ag.	Sep		NA	NA	0.1%
Oct 11	08:30	Import Prices ex-oil	Sep		NA	NA	-0.1%
Oct 11	08:30	Initial Claims	10/06		315K	NA	317K
Oct 11	08:30	Trade Balance	Aug		-\$58.5B	-\$59.0B	-\$59.2B
Oct 11	14:00	Trsy Budget - may be delayed	Sep		\$113.0B	\$100.0B	\$56.2B
Oct 12	08:30	Retail Sales	Sep		0.5%	0.2%	0.3%
Oct 12	08:30	Retail Sales ex-auto	Sep		0.6%	0.3%	-0.4%
Oct 12	08:30	PPI	Sep		06%	0.4%	-1.4%
Oct 12	08:30	Core PPI	Sep		0.2%	0.2%	0.2%
Oct 12	10:00	Business Inventories	Aug		0.2%	0.3%	0.5%
Oct 12	10:00	Mich Sentiment-Prel.	Oct		83.0	84.0	83.4