



## Daily trading plan for Oct. 10, 2007

### 1. ESZ7 IN PREVIOUS DAY

Open	High	Low	Closing
1567.75	1577.50	1562.25	1576.25

### 2. PIVOTS FOR ESU7

	Daily	Weekly	Monthly	Yearly
R3	1597.00	1617.67	1691.00	1722.00
R2	1587.25	1595.58	1621.50	1583.50
R1	1581.75	1583.17	1579.75	1506.00
<b>PPT</b>	<b>1572.00</b>	<b>1561.08</b>	<b>1510.25</b>	<b>1367.50</b>
S1	1566.50	1548.67	1468.50	1290.00
S2	1556.75	1526.58	1399.00	1151.50
S3	1551.25	1514.17	1357.25	1074.00

### 3. FOCUS NUMBERS (intra-day Position trading)

Sell levels	Buying levels
1577.25 (First Sell#)	1571-68.50 (first Buy#)
1589.25 (Second Sell#)	1564.75-63.25 (second Buy#)

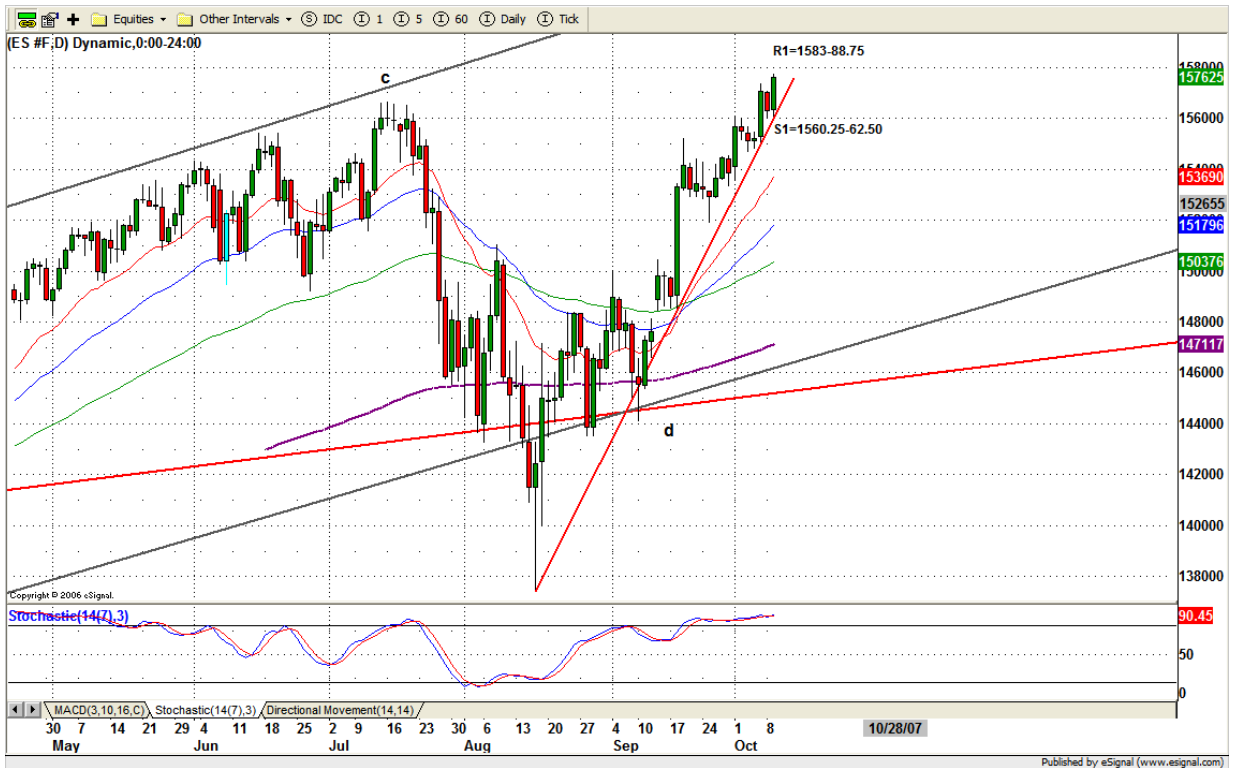
### 4. MAJOR RESISTANCE AND SUPPORT LEVELS FOR TODAY

<b>Resistance</b>	1579.75	1582.25	1585.75	1588.50	1595.50
<b>Support</b>	1571.25	1565.25	1561.25	1558.25	1554.50

## 5. DAILY OUTLOOK

ES made new highs again yesterday. Today we should see a high continuation move in the early morning. All markets are bullish. This buying momentum can carry ES to go higher. As long as Aug. 18 uptrend line (red) holds, ES remains bullish. But if ES breaks down this uptrend line, then 20 day moving average line could be first line for testing.

### ESZ7 Daily Chart



## 6. TRADING STRATEGY FOR Oct. 10, 2007

ES broke out its sideways range and closed at top. today we may see a little pullback into 1571-70 range, and go for making new highs again. Any breakdown yesterday's low 1562.25-1560.50 range will trigger long side stop run and push ES to lower to the low level of the sideways range.

**Intraday swing position entry on short side:**  
**1579.75(Scalping) 1585.75 (agg) and 1588.75 (cons)**  
**Intraday swing position entry on long side:**  
**1570.75 (scalping) 1568.75 (agg) and 1564-63(cons)**

### ESZ7 INTRADAY



## 7. PREDICTION FOR TODAY'S MOVEMENT

### Current (interval=1.95)

1582.03	+2/8
1580.08	+1/8
1578.13	8/8
1576.17	7/8
1574.22	6/8
1572.27	5/8
1570.31	4/8
1568.36	3/8
1566.41	2/8
1564.45	1/8
1562.50	0/8
1560.55	-1/8
1558.59	-2/8

### Up (Interval=1.95)

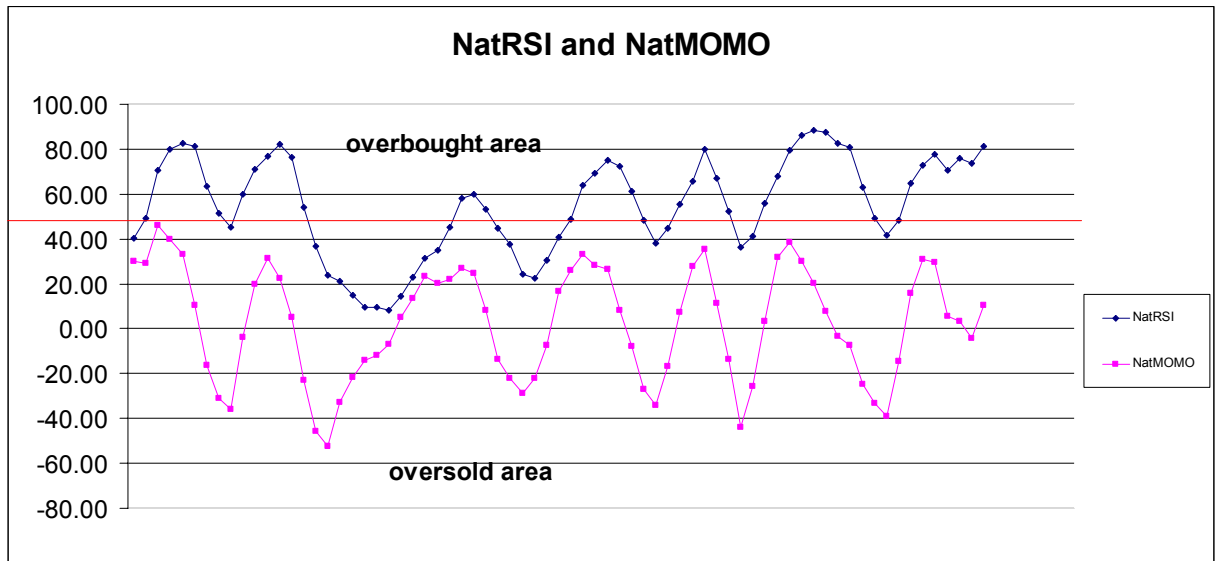
1589.84	+2/8
1587.89	+1/8
1585.94	8/8
1583.98	7/8
1582.03	6/8
1580.08	5/8
1578.13	4/8
1576.17	3/8
1574.22	2/8
1572.27	1/8
1570.31	0/8
1568.36	-1/8
1566.41	-2/8

### Down (Interval=1.95)

1582.03	+2/8
1580.08	+1/8
1578.13	8/8
1576.17	7/8
1574.22	6/8
1572.27	5/8
1570.31	4/8
1568.36	3/8
1566.41	2/8
1564.45	1/8
1562.50	0/8
1560.55	-1/8
1558.59	-2/8

## 8. OTHER INDICATORS

NatRSI (1day)	NatRSI (5day)	NatMoMo	ATR 10	Waist number
0.77	0.81	10.64	11.70	1572.00
overbought	overbought			



**9. WEEKLY ECONOMIC REPORTS (<http://www.tradethenews.com/weekly-calendar.php>)**

Date	ET	Release	For	Actual	Briefing.com	Consensus	Prior
Oct 10	10:00	<a href="#">Wholesale Inventories</a>	Aug		0.2%	0.3%	0.2%
Oct 10	10:30	Crude Inventories	10/05		NA	NA	1138K
Oct 11	08:30	<a href="#">Export Prices ex-ag.</a>	Sep		NA	NA	0.1%
Oct 11	08:30	<a href="#">Import Prices ex-oil</a>	Sep		NA	NA	-0.1%
Oct 11	08:30	<a href="#">Initial Claims</a>	10/06		315K	NA	317K
Oct 11	08:30	<a href="#">Trade Balance</a>	Aug		-\$58.5B	-\$59.0B	-\$59.2B
Oct 11	14:00	<a href="#">Trsy Budget - may be delayed</a>	Sep		\$113.0B	\$100.0B	\$56.2B
Oct 12	08:30	<a href="#">Retail Sales</a>	Sep		0.5%	0.2%	0.3%
Oct 12	08:30	<a href="#">Retail Sales ex-auto</a>	Sep		0.6%	0.3%	-0.4%
Oct 12	08:30	<a href="#">PPI</a>	Sep		06%	0.4%	-1.4%
Oct 12	08:30	<a href="#">Core PPI</a>	Sep		0.2%	0.2%	0.2%
Oct 12	10:00	<a href="#">Business Inventories</a>	Aug		0.2%	0.3%	0.5%
Oct 12	10:00	<a href="#">Mich Sentiment-Prel.</a>	Oct		83.0	84.0	83.4