



Daily trading plan for Oct. 9, 2007

1. ESZ7 IN PREVIOUS DAY

Open	High	Low	Closing
1566.00	1567.00	1559.75	1562.75

2. PIVOTS FOR ESU7

	Daily	Weekly	Monthly	Yearly
R3	1573.83	1617.67	1691.00	1722.00
R2	1570.42	1595.58	1621.50	1583.50
R1	1566.58	1583.17	1579.75	1506.00
PPT	1563.17	1561.08	1510.25	1367.50
S1	1559.33	1548.67	1468.50	1290.00
S2	1555.92	1526.58	1399.00	1151.50
S3	1552.08	1514.17	1357.25	1074.00

3. FOCUS NUMBERS (intra-day Position trading)

Sell levels	Buying levels
1570.75-73.25 (First Sell#)	1553.50-52.25 (first Buy#)
1575-76.25 (Second Sell#)	1545.75-47.75 (second Buy#)

4. MAJOR RESISTANCE AND SUPPORT LEVELS FOR TODAY

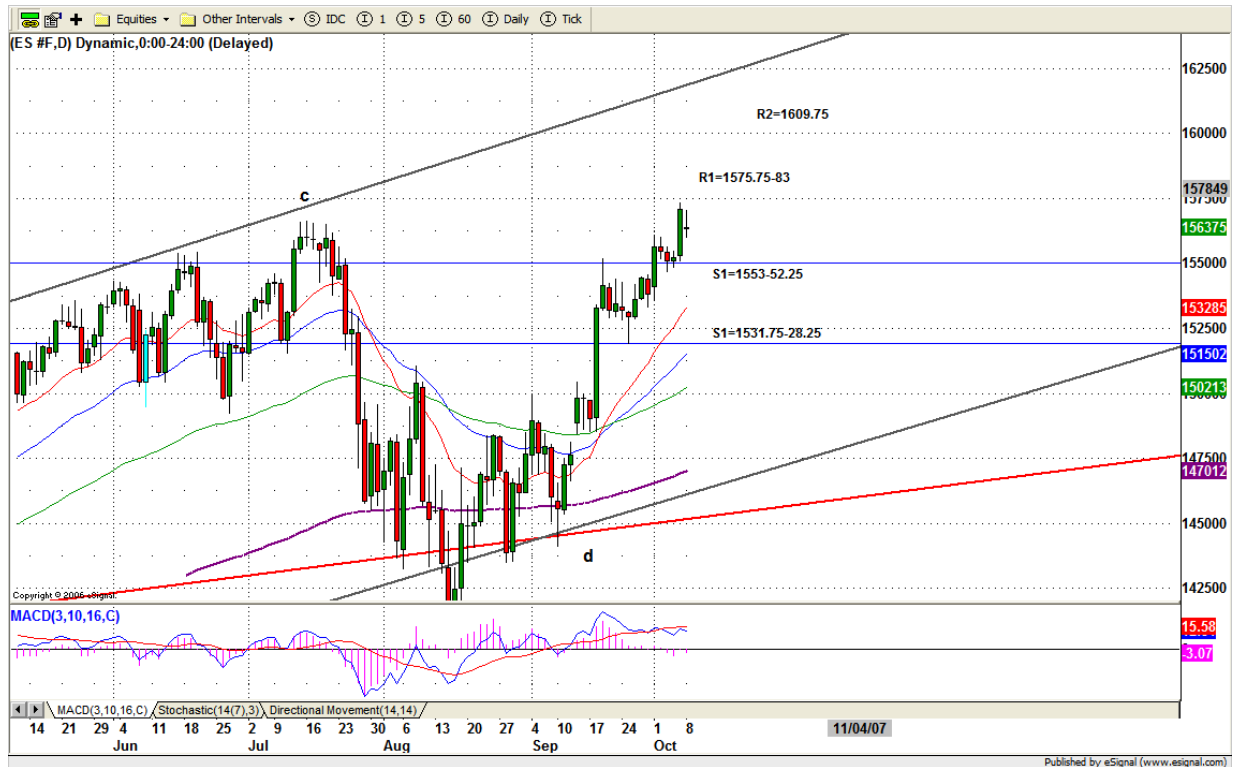
Resistance	1569.00	1572.00	1575.25	1579.50	1583.25
Support	1561.25	1558.25	1553.50	1547.75	1538.00

5. DAILY OUTLOOK

ES performed an inside day with very narrow range and light volume yesterday. This could be caused by Holiday in Canada and Columbus Day in USA. Today to Oct. 11 is CIT day range. We should see one direction or other with strong move.

For upside, maximum top could be reached around 1578.75 -1585.75 range if ES breaks out 1573.50 and then breaks out 1575.50. For downside, ES could fill the 1552 gap and rest around 1546. Any breakdown 1545 will indicate the TOP is in and a trend reversal is taking place.

ESZ7 Daily Chart



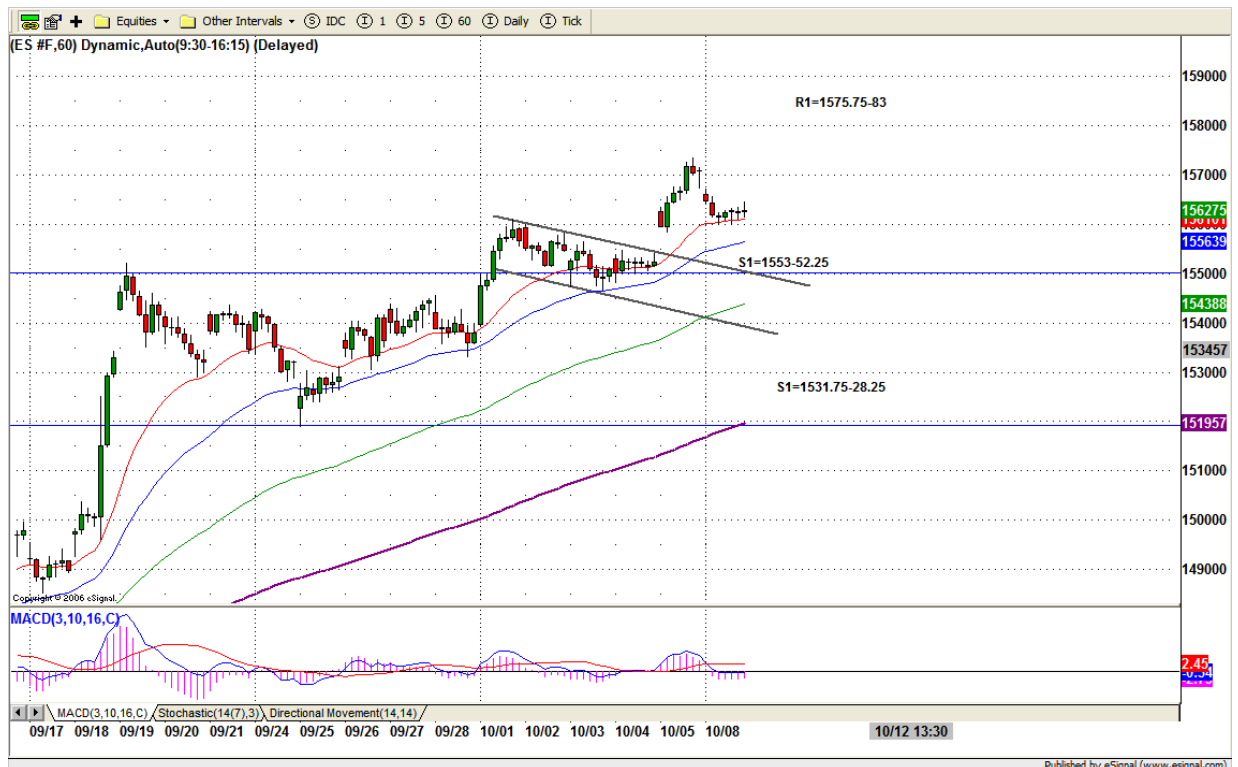
6. TRADING STRATEGY FOR Oct. 9, 2007

ES consolidated Friday's gain. 1558.25 is key level. Open below this level indicates last Friday's gap is an exhaustion gap which is a bearish sign. But if open above 1565 level, it is possible for ES to fill yesterday 1570.75 gap first before it reverses down to fill last Friday's 1552.25 gap.

Pay attention on Today's high. It could be our short-term high for coming days.

Intraday swing position entry on short side:
1570.75(Scalping) 1575.75 (agg) and 1582.75 (cons)
Intraday swing position entry on long side:
1556.75 (scalping) 1545.75 (agg) and 1528-31.75 (cons)

ESZ7 INTRADAY



7. PREDICTION FOR TODAY'S MOVEMENT

Current (interval=0.98)

1568.36	+2/8
1567.38	+1/8
1566.41	8/8
1565.43	7/8
1564.45	6/8
1563.48	5/8
1562.50	4/8
1561.52	3/8
1560.55	2/8
1559.57	1/8
1558.59	0/8
1557.62	-1/8
1556.64	-2/8

Up (Interval=1.95)

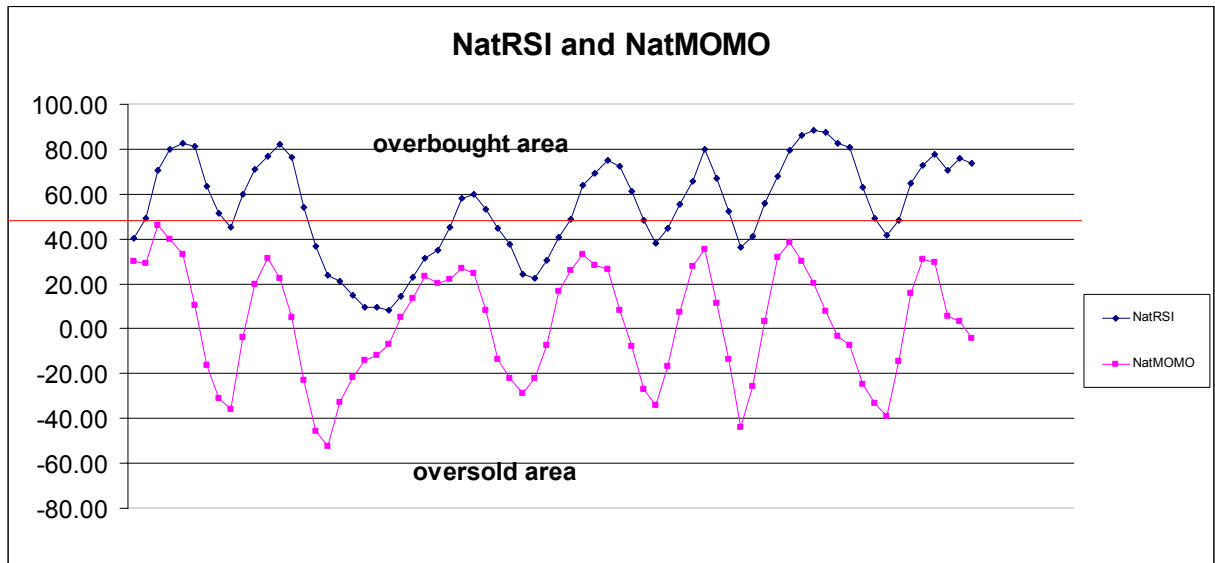
1582.03	+2/8
1580.08	+1/8
1578.13	8/8
1576.17	7/8
1574.22	6/8
1572.27	5/8
1570.31	4/8
1568.36	3/8
1566.41	2/8
1564.45	1/8
1562.50	0/8
1560.55	-1/8
1558.59	-2/8

Down (Interval=3.90)

1570.31	+2/8
1566.41	+1/8
1562.50	8/8
1558.59	7/8
1554.69	6/8
1550.78	5/8
1546.88	4/8
1542.97	3/8
1539.06	2/8
1535.16	1/8
1531.25	0/8
1527.34	-1/8
1523.44	-2/8

8. OTHER INDICATORS

NatRSI (1day)	NatRSI (5day)	NatMoMo	ATR 10	Waist number
0.26	0.73	-4.42	11.40	1564.38
neutral	overbought			



9. WEEKLY ECONOMIC REPORTS (<http://www.tradethenews.com/weekly-calendar.php>)

Date	ET	Release	For	Actual	Briefing.com	Consensus	Prior
Oct 09	14:00	FOMC Minutes	Sep 18				
Oct 10	10:00	Wholesale Inventories	Aug		0.2%	0.3%	0.2%
Oct 10	10:30	Crude Inventories	10/05		NA	NA	1138K
Oct 11	08:30	Export Prices ex-ag.	Sep		NA	NA	0.1%
Oct 11	08:30	Import Prices ex-oil	Sep		NA	NA	-0.1%
Oct 11	08:30	Initial Claims	10/06		315K	NA	317K
Oct 11	08:30	Trade Balance	Aug		-\$58.5B	-\$59.0B	-\$59.2B
Oct 11	14:00	Trsy Budget - may be delayed	Sep		\$113.0B	\$100.0B	\$56.2B
Oct 12	08:30	Retail Sales	Sep		0.5%	0.2%	0.3%
Oct 12	08:30	Retail Sales ex-auto	Sep		0.6%	0.3%	-0.4%
Oct 12	08:30	PPI	Sep		06%	0.4%	-1.4%
Oct 12	08:30	Core PPI	Sep		0.2%	0.2%	0.2%
Oct 12	10:00	Business Inventories	Aug		0.2%	0.3%	0.5%
Oct 12	10:00	Mich Sentiment-Prel.	Oct		83.0	84.0	83.4