



Daily trading plan for Oct. 4, 2007

1. ESZ7 IN PREVIOUS DAY

Open	High	Low	Closing
1550.50	1556.50	1546.50	1550.75

2. PIVOTS FOR ESU7

	Daily	Weekly	Monthly	Yearly
R3	1566.00	1576.17	1691.00	1722.00
R2	1561.25	1560.83	1621.50	1583.50
R1	1556.00	1549.42	1579.75	1506.00
PPT	1551.25	1534.08	1510.25	1367.50
S1	1546.00	1522.67	1468.50	1290.00
S2	1541.25	1507.33	1399.00	1151.50
S3	1536.00	1495.92	1357.25	1074.00

3. FOCUS NUMBERS (intra-day Position trading)

Sell levels	Buying levels
1565.50-68.50 (First Sell#)	1545.25 (first Buy#)
1572.25 (Second Sell#)	1538 (second Buy#)

4. MAJOR RESISTANCE AND SUPPORT LEVELS FOR TODAY

Resistance	1556.50	1561.00	1566.00	1576.25	1579.75
Support	1545.75	1541.25	1536.00	1534.25	1528.00

5. DAILY OUTLOOK

Yesterday's action from ES neither confirmed a near-term peak nor confirmed that another upleg will be ahead. Even though we see some buyers, ES mainly is waiting for Friday's unemployment report. Perhaps that report will trigger a resolution in one direction, perhaps in both directions: a spike to new highs, followed by a sharp decline. Today we may have one more day like yesterday to wait for coming Friday's report.

ESZ7 Daily Chart

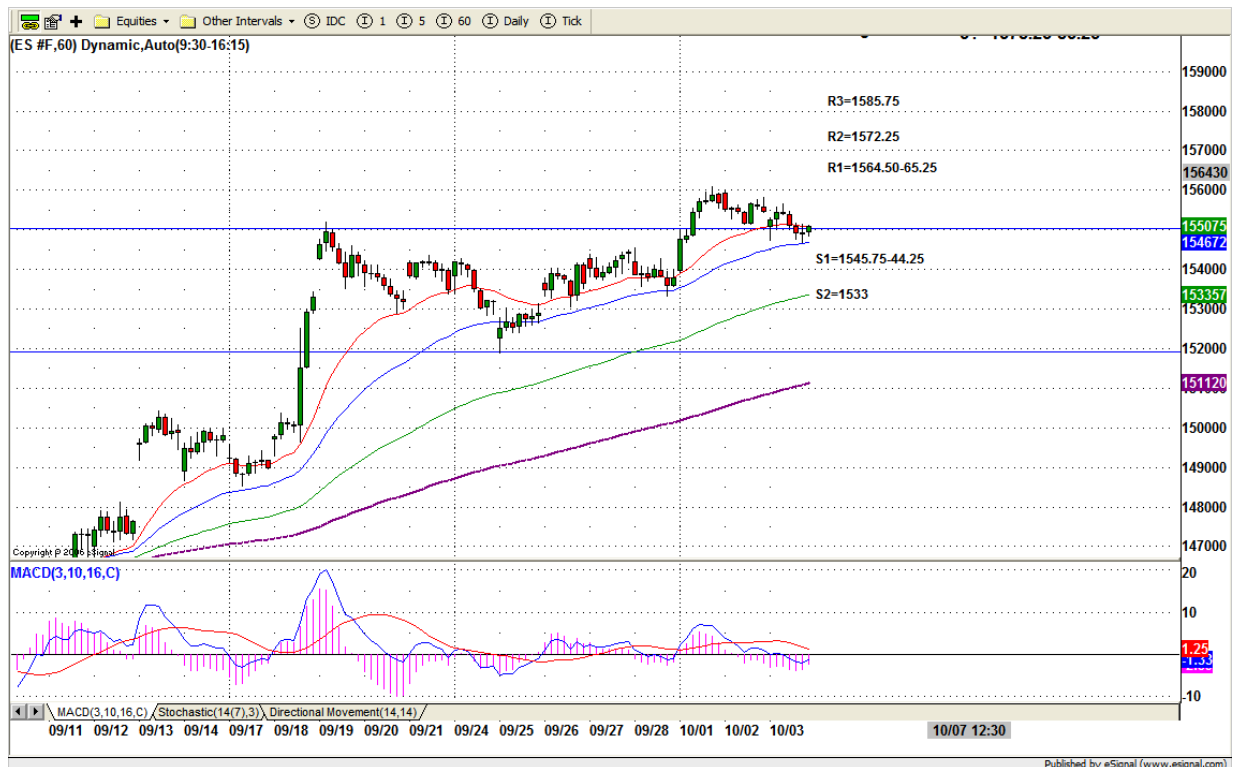


6. TRADING STRATEGY FOR Oct. 4, 2007

Yesterday ES consolidated doing its contraction move. Today ES may repeat yesterday's move and tried to hold above its breakout level 1545-43. As long as this range doesn't breach, choppy move should be expected. But if this range is broken, 1538 or 1533 could be retested.

Intraday swing position entry on short side:
1561.50(Scalping) 1565.25 (agg) and 1572.75 (cons)
Intraday swing position entry on long side:
1543 (scalping) 1537.00 (agg) and 1533 (cons)

ESZ7 INTRADAY



7. PREDICTION FOR TODAY'S MOVEMENT

Current (interval=0.98)

1556.64	+2/8
1555.66	+1/8
1554.69	8/8
1553.71	7/8
1552.73	6/8
1551.76	5/8
1550.78	4/8
1549.80	3/8
1548.83	2/8
1547.85	1/8
1546.88	0/8
1545.90	-1/8
1544.92	-2/8

Up (Interval=1.95)

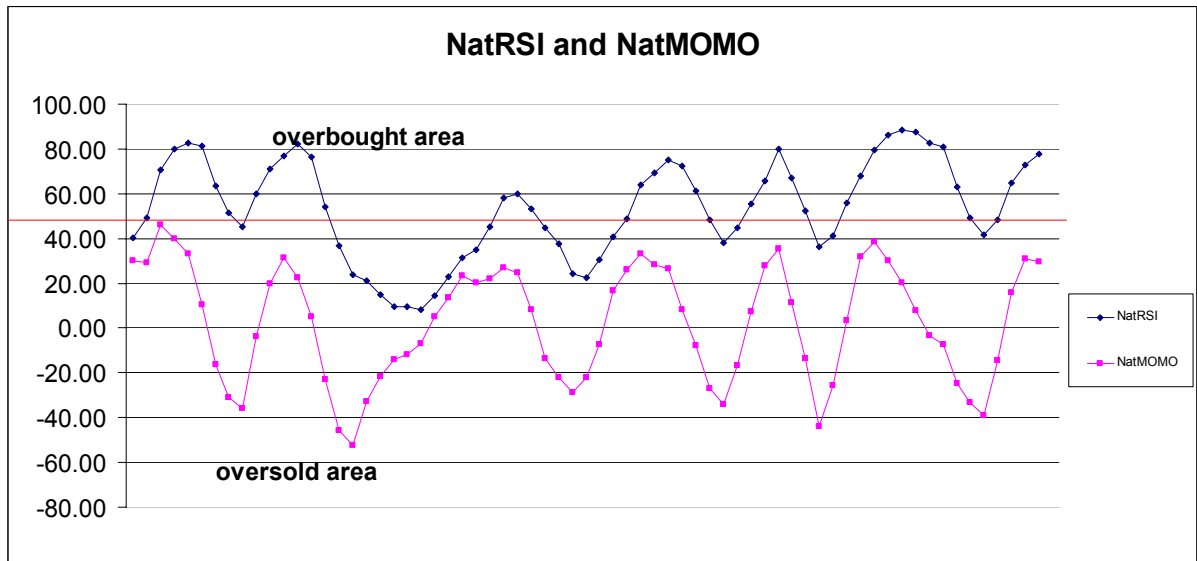
1566.41	+2/8
1564.45	+1/8
1562.50	8/8
1560.55	7/8
1558.59	6/8
1556.64	5/8
1554.69	4/8
1552.73	3/8
1550.78	2/8
1548.83	1/8
1546.88	0/8
1544.92	-1/8
1542.97	-2/8

Down (Interval=1.95)

1558.59	+2/8
1556.64	+1/8
1554.69	8/8
1552.73	7/8
1550.78	6/8
1548.83	5/8
1546.88	4/8
1544.92	3/8
1542.97	2/8
1541.02	1/8
1539.06	0/8
1537.11	-1/8
1535.16	-2/8

8. OTHER INDICATORS

NatRSI (1day)	NatRSI (5day)	NatMoMo	ATR 10	Waist number
0.51	0.77	29.46	12.30	1550.63
neutral	overbought			



9. WEEKLY ECONOMIC REPORTS (<http://www.tradethenews.com/weekly-calendar.php>)

Date	ET	Release	For	Actual	Briefing.com	Consensus	Prior
Oct 04	08:30	Initial Claims	09/29	310K	NA	298K	
Oct 04	10:00	Factory Orders	Aug	-3.0%	-2.5%	3.7%	
Oct 05	08:30	Nonfarm Payrolls	Sep	100K	100K	-4K	
Oct 05	08:30	Unemployment Rate	Sep	4.7%	4.7%	4.6%	
Oct 05	08:30	Hourly Earnings	Sep	0.3%	0.3%	0.3%	
Oct 05	08:30	Average Workweek	Sep	33.8	33.8	33.8	
Oct 05	15:00	Consumer Credit	Aug	\$10.0B	\$9.0B	\$7.5B	