



Daily trading plan for Oct. 3, 2007

1. ESZ7 IN PREVIOUS DAY

Open	High	Low	Closing
1559.00	1559.75	1551.25	1554.25

2. PIVOTS FOR ESU7

	Daily	Weekly	Monthly	Yearly
R3	1567.58	1576.17	1691.00	1722.00
R2	1563.67	1560.83	1621.50	1583.50
R1	1559.08	1549.42	1579.75	1506.00
PPT	1555.17	1534.08	1510.25	1367.50
S1	1550.58	1522.67	1468.50	1290.00
S2	1546.67	1507.33	1399.00	1151.50
S3	1542.08	1495.92	1357.25	1074.00

3. FOCUS NUMBERS (intra-day Position trading)

Sell levels	Buying levels
1565.50-68.50 (First Sell#)	1545.25 (first Buy#)
1572.25 (Second Sell#)	1538 (second Buy#)

4. MAJOR RESISTANCE AND SUPPORT LEVELS FOR TODAY

Resistance	1559.25	1564.00	1572.50	1576.25	1579.75
Support	1550.50	1545.75	1541.75	1534.25	1528.00

5. DAILY OUTLOOK

The market continued ignoring bad economic news yesterday. It only did a minor retracement. We didn't see follow through movement, but we also didn't see a strong pullback. ES mainly tried to hold up every support line to prevent price from falling. Should ES make a double TOP or continue going higher? This question hasn't got a clear answer yet. Today 1565.50 level is a key level. If this line can hold price down until Friday, it is possible for ES to go down to 1515 level for a minor correction within coming weeks.

ESZ7 Daily Chart

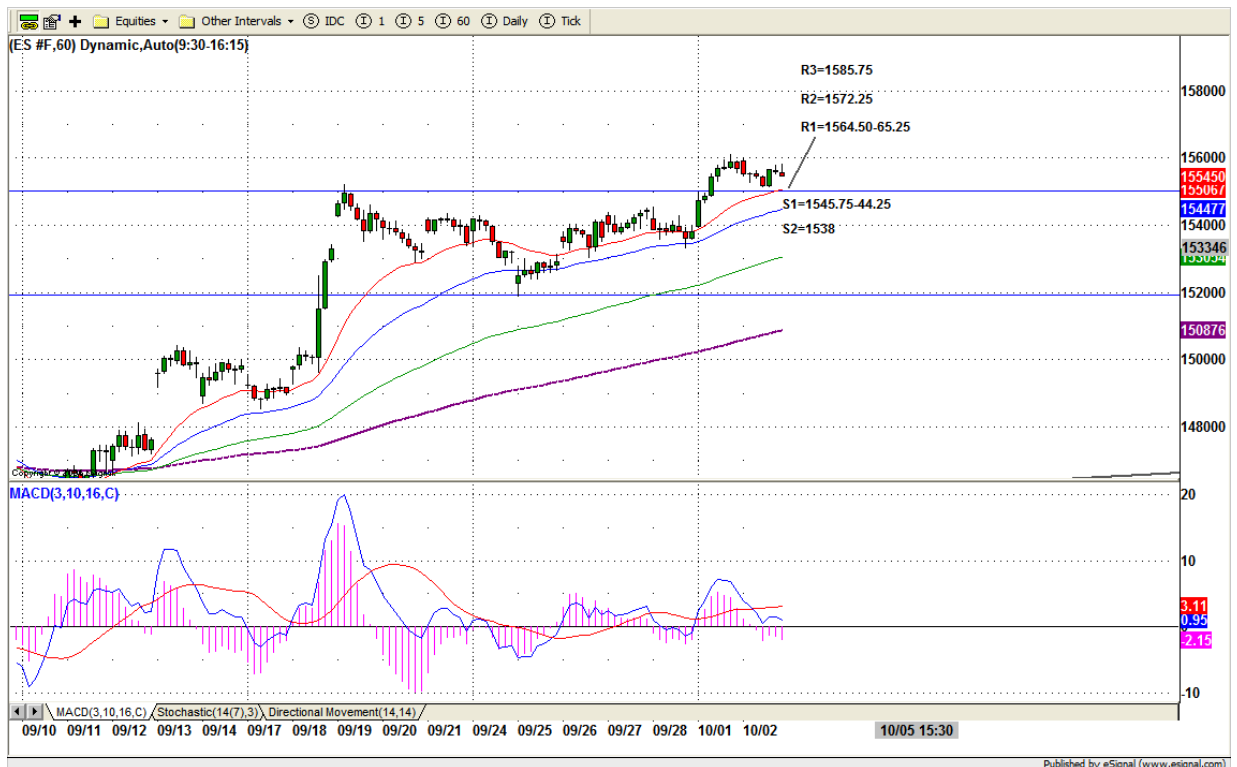


6. TRADING STRATEGY FOR Oct. 3, 2007

Yesterday ES consolidated its Monday's gain. It performed a small range inside day. Today, it may breakout yesterday's range to go higher if economic report is good, or goes down to fill the gap 1538 if report is not.

Intraday swing position entry on short side:
1564.75-65.50(Scalping) 1572.25 (agg) and 1585.75 (cons)
Intraday swing position entry on long side:
1545.50(scalping) 1538.00 (agg) and 1533 (cons)

ESZ7 INTRADAY



7. PREDICTION FOR TODAY'S MOVEMENT

Current (interval=0.98)

1560.55	+2/8
1559.57	+1/8
1558.59	8/8
1557.62	7/8
1556.64	6/8
1555.66	5/8
1554.69	4/8
1553.71	3/8
1552.73	2/8
1551.76	1/8
1550.78	0/8
1549.80	-1/8
1548.83	-2/8

Up (Interval=3.90)

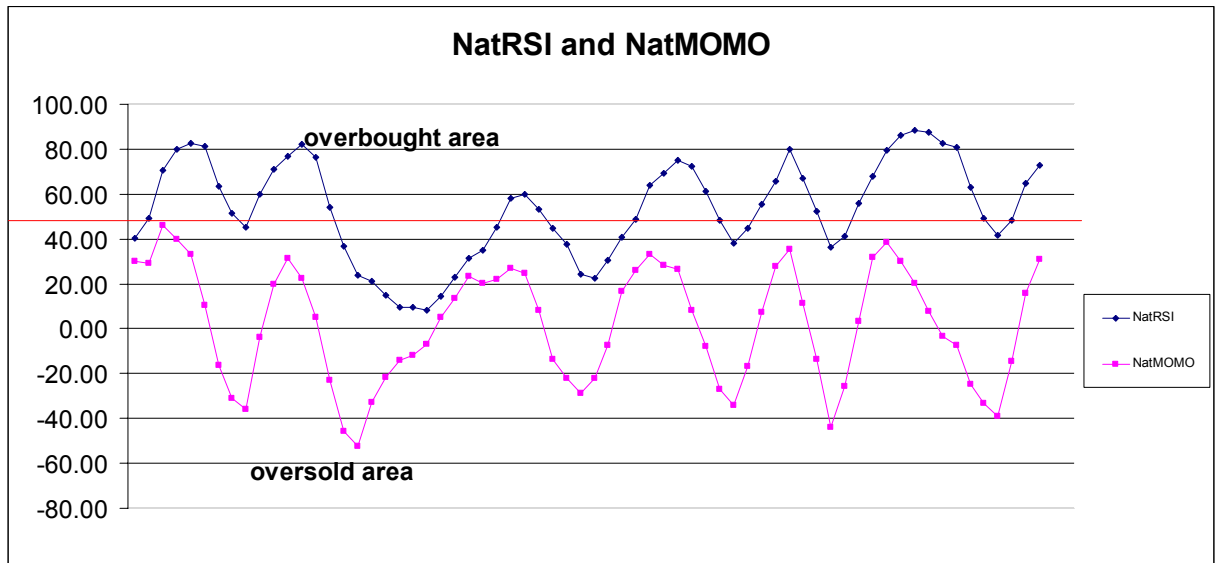
1570.31	+2/8
1566.41	+1/8
1562.50	8/8
1558.59	7/8
1554.69	6/8
1550.78	5/8
1546.88	4/8
1542.97	3/8
1539.06	2/8
1535.16	1/8
1531.25	0/8
1527.34	-1/8
1523.44	-2/8

Down (Interval=1.95)

1558.59	+2/8
1556.64	+1/8
1554.69	8/8
1552.73	7/8
1550.78	6/8
1548.83	5/8
1546.88	4/8
1544.92	3/8
1542.97	2/8
1541.02	1/8
1539.06	0/8
1537.11	-1/8
1535.16	-2/8

8. OTHER INDICATORS

NatRSI (1day)	NatRSI (5day)	NatMoMo	ATR 10	Waist number
0.22	0.72	30.96	12.98	1556.63
neutral	overbought			



9. WEEKLY ECONOMIC REPORTS (<http://www.tradethenews.com/weekly-calendar.php>)

Date	ET	Release	For	Actual	Briefing.com	Consensus	Prior
Oct 03	10:00	ISM Services	Sep	54.0	55.0	55.8	
Oct 03	10:30	Crude Inventories	09/28	NA	NA	1842K	
Oct 04	08:30	Initial Claims	09/29	310K	NA	298K	
Oct 04	10:00	Factory Orders	Aug	-3.0%	-2.5%	3.7%	
Oct 05	08:30	Nonfarm Payrolls	Sep	100K	100K	-4K	
Oct 05	08:30	Unemployment Rate	Sep	4.7%	4.7%	4.6%	
Oct 05	08:30	Hourly Earnings	Sep	0.3%	0.3%	0.3%	
Oct 05	08:30	Average Workweek	Sep	33.8	33.8	33.8	
Oct 05	15:00	Consumer Credit	Aug	\$10.0B	\$9.0B	\$7.5B	