



Daily trading plan for Oct. 2, 2007

1. ESZ7 IN PREVIOUS DAY

Open	High	Low	Closing
1539.50	1561.00	1539.00	1556.50

2. PIVOTS FOR ESU7

	Daily	Weekly	Monthly	Yearly
R3	1587.33	1576.17	1691.00	1722.00
R2	1574.17	1560.83	1621.50	1583.50
R1	1565.33	1549.42	1579.75	1506.00
PPT	1552.17	1534.08	1510.25	1367.50
S1	1543.33	1522.67	1468.50	1290.00
S2	1530.17	1507.33	1399.00	1151.50
S3	1521.33	1495.92	1357.25	1074.00

3. FOCUS NUMBERS (intra-day Position trading)

Sell levels	Buying levels
1567.25 (First Sell#)	1546.50-45.25 (first Buy#)
1572.25 (Second Sell#)	1540.75-38(second Buy#)

4. MAJOR RESISTANCE AND SUPPORT LEVELS FOR TODAY

Resistance	1561.00	1566.50	1572.25	1576.75	1579.75
Support	1551.00	1548.75	1540.25	1534.25	1528.00

5. DAILY OUTLOOK

The market rallied yesterday as investors ignored Citigroup and UBS warning, instead focused on the possibility of more Fed. rate cuts. ES broke its Sept 19 high and tried to negotiate with July's high. Will ES make a double TOP or continue going higher? Today 1565.50 level is key. If yesterday's gain has a follow-through, we should see a new high around 1572.25 or 1585.75. If doesn't, ES needs to pullback to retest yesterday's low 1539 and regain power to try one more time. Any breakdown 1533 level will indicate that there is a correction on the way.

ESZ7 Daily Chart



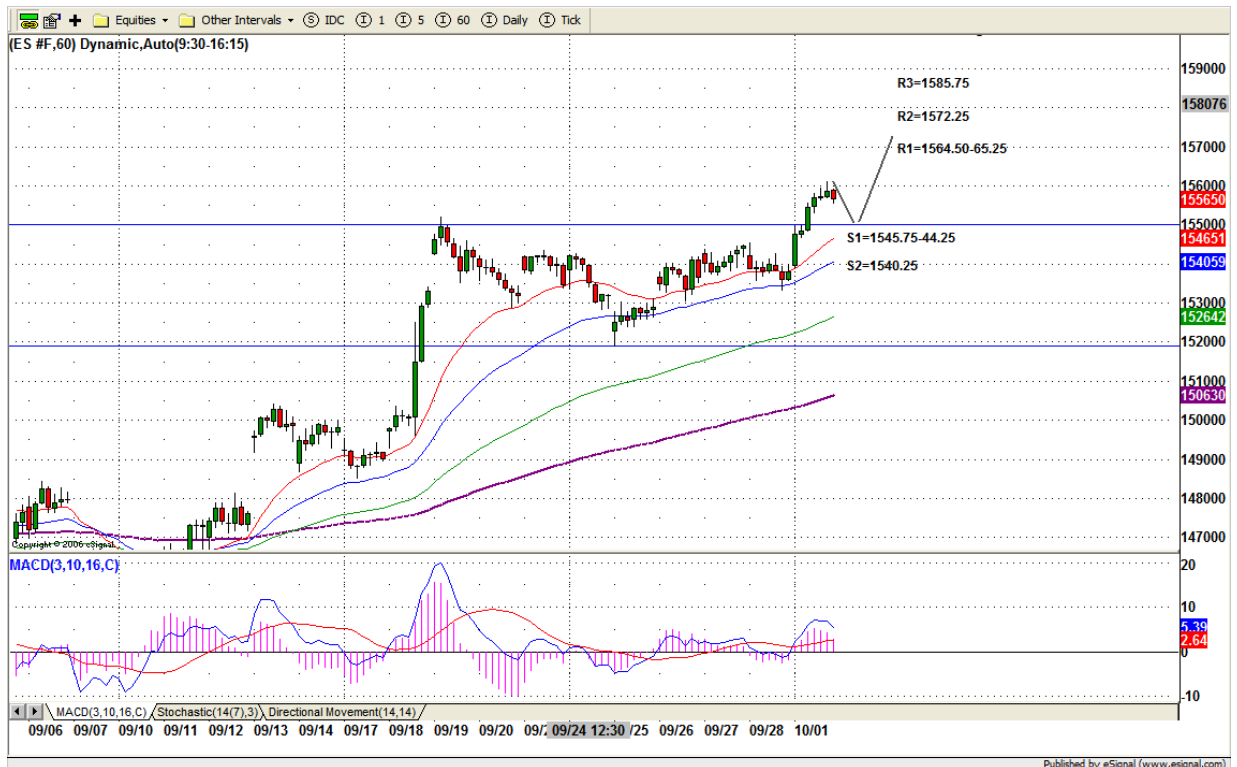
6. TRADING STRATEGY FOR Oct. 2, 2007

Yesterday ES broke out of its consolidation range (1552-1518.75) and filled its Sept. 19 gap around 1559.75. Today ES may pullback into its breakout line around 1552-45 range for testing. As long as ES doesn't breakdown 1552.50-50.50 range in the early morning, yesterday's high 1561 could be retested. Any breakout 1565.50 level, it is possible for ES to go higher to 1572.25 or 1585.75 if uptrend is strong.

Pay attention to any pullback move to 1552-50 or little lower to the 1545-46 support range in the early morning. GO long for one more push high, and then looking for reversal signal for short entry.

Intraday swing position entry on short side:
1564.75(Scalping) 1572.25 (agg) and 1585.75 (cons)
Intraday swing position entry on long side:
1552.50(scalping) 1545.25 (agg) and 1539-38.00 (cons)

ESZ7 INTRADAY



7. PREDICTION FOR TODAY'S MOVEMENT

Current (interval=3.90)

1570.31	+2/8
1566.41	+1/8
1562.50	8/8
1558.59	7/8
1554.69	6/8
1550.78	5/8
1546.88	4/8
1542.97	3/8
1539.06	2/8
1535.16	1/8
1531.25	0/8
1527.34	-1/8
1523.44	-2/8

Up (Interval=3.90)

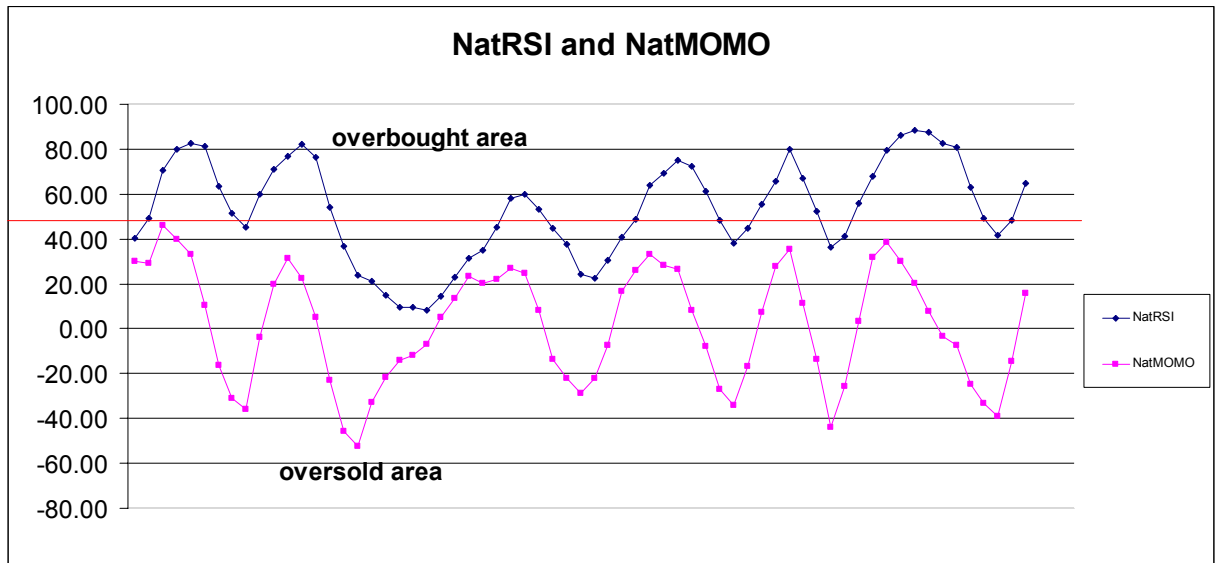
1585.94	+2/8
1582.03	+1/8
1578.13	8/8
1574.22	7/8
1570.31	6/8
1566.41	5/8
1562.50	4/8
1558.59	3/8
1554.69	2/8
1550.78	1/8
1546.88	0/8
1542.97	-1/8
1539.06	-2/8

Down (Interval=3.90)

1570.31	+2/8
1566.41	+1/8
1562.50	8/8
1558.59	7/8
1554.69	6/8
1550.78	5/8
1546.88	4/8
1542.97	3/8
1539.06	2/8
1535.16	1/8
1531.25	0/8
1527.34	-1/8
1523.44	-2/8

8. OTHER INDICATORS

NatRSI (1day)	NatRSI (5day)	NatMoMo	ATR 10	Waist number
0.88	0.65	15.69	16.30	1548.00
overbought	neutral			



9. WEEKLY ECONOMIC REPORTS (<http://www.tradethenews.com/weekly-calendar.php>)

Date	ET	Release	For	Actual	Briefing.com	Consensus	Prior
Oct 02	10:00	Pending Home Sales	Aug				-12.2%
Oct 03	10:00	ISM Services	Sep	54.0	55.0	55.8	
Oct 03	10:30	Crude Inventories	09/28	NA	NA	1842K	
Oct 04	08:30	Initial Claims	09/29	310K	NA	298K	
Oct 04	10:00	Factory Orders	Aug	-3.0%	-2.5%	3.7%	
Oct 05	08:30	Nonfarm Payrolls	Sep	100K	100K	-4K	
Oct 05	08:30	Unemployment Rate	Sep	4.7%	4.7%	4.6%	
Oct 05	08:30	Hourly Earnings	Sep	0.3%	0.3%	0.3%	
Oct 05	08:30	Average Workweek	Sep	33.8	33.8	33.8	
Oct 05	15:00	Consumer Credit	Aug	\$10.0B	\$9.0B	\$7.5B	