



Daily trading plan for Sept. 28, 2007

1. ESZ7 IN PREVIOUS DAY

Open	High	Low	Closing
1542.75	1545.00	1537.00	1544.75

2. PIVOTS FOR ESU7

	Daily	Weekly	Monthly	Yearly
R3	1555.33	1629.67	1669.33	1722.00
R2	1550.17	1590.83	1589.92	1583.50
R1	1547.33	1562.67	1533.33	1506.00
PPT	1542.17	1523.83	1453.92	1367.50
S1	1539.33	1495.67	1397.33	1290.00
S2	1534.17	1456.83	1317.92	1151.50
S3	1531.33	1428.67	1261.33	1074.00

3. FOCUS NUMBERS (intra-day Position trading)

Sell levels	Buying levels
1553.00 (First Sell#)	1535.50 (first Buy#)
1560.25 (Second Sell#)	1529.00 (second Buy#)

4. MAJOR RESISTANCE AND SUPPORT LEVELS FOR TODAY

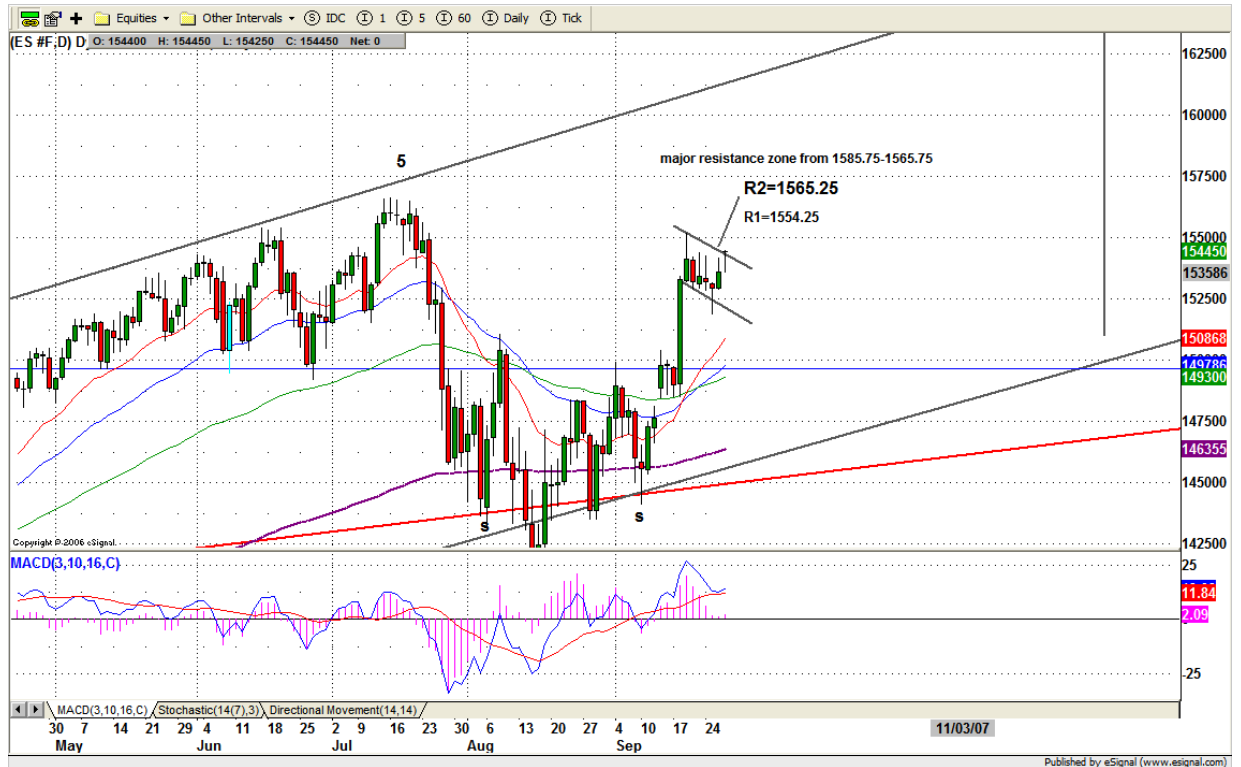
Resistance	1547.25	1553.00	1556.75	1560.25	1564.75
Support	1537.00	1535.50	1529.00	1523.50	1519.25

5. DAILY OUTLOOK

ES continued its attempt to breakout its flag pattern all day yesterday. But in the end, it managed to close right at the top of flag line. Today is last day of the institutional “Window dressing” period, it will continue struggling to move up.

There is a divergence between S&P 500 and Dow Jones industrial average. That means ES may run out of steam soon.

ESZ7 Daily Chart



6. TRADING STRATEGY FOR Sept. 28, 2007

Yesterday ES formed a narrow range day (NR7). It is in contraction mode. Today we may see expansion move, but also has a chance to see ES go for one more contraction move day within yesterday's range.

Daily range breakout move should be paid attention to. Breakout 1545 level, it is possible for ES to pop up to 1553 level or higher to 1560-62 if upside has a strong momentum. Fail to breakout 1545 level, price could pullback down to retest 1537 level; if 1537 level fails to hold, then downside Momentum could push price down to fill yesterday's gap 1536-1535 range or lower to 1529 level if a stop run occurs at 1433-32 range.

Intraday swing position entry on short side:
1549.75(Scalping) 1553.00 (agg) and 1560.25 (cons)
Intraday swing position entry on long side:
1537.00 (scalping) 1534.50-33.75 (agg) and 1529.00 (cons)

ESZ7 INTRADAY



7. PREDICTION FOR TODAY'S MOVEMENT

Current (interval=1.95)

1550.78	+2/8
1548.83	+1/8
1546.88	8/8
1544.92	7/8
1542.97	6/8
1541.02	5/8
1539.06	4/8
1537.11	3/8
1535.16	2/8
1533.20	1/8
1531.25	0/8
1529.30	-1/8
1527.34	-2/8

Up (Interval=3.90)

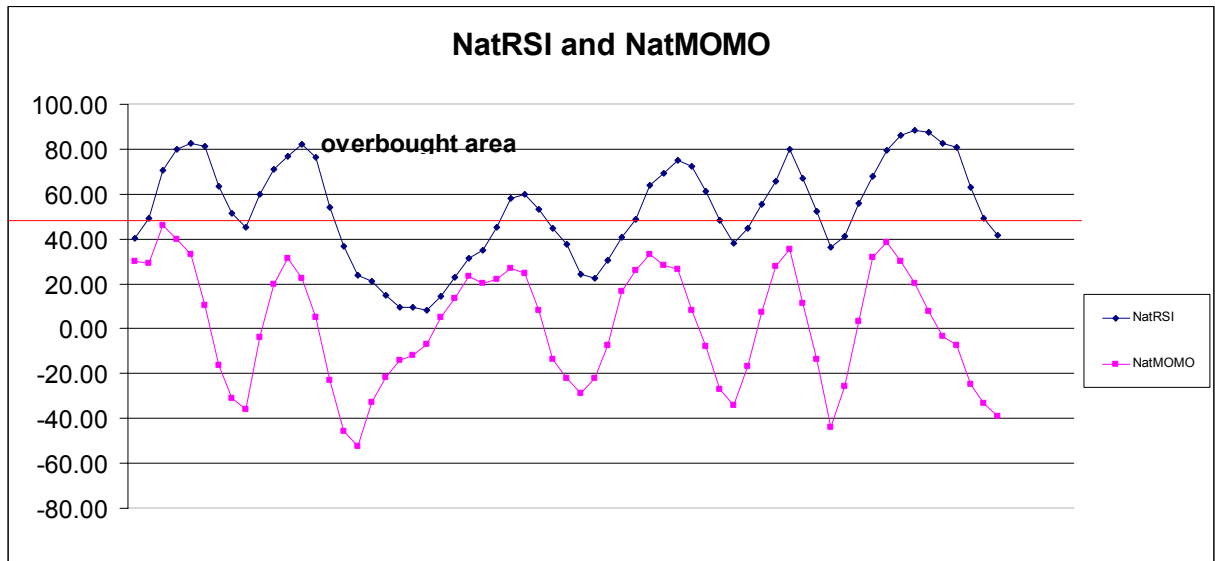
1550.78	+2/8
1548.83	+1/8
1546.88	8/8
1544.92	7/8
1542.97	6/8
1541.02	5/8
1539.06	4/8
1537.11	3/8
1535.16	2/8
1533.20	1/8
1531.25	0/8
1529.30	-1/8
1527.34	-2/8

Down (Interval=1.95)

1550.78	+2/8
1548.83	+1/8
1546.88	8/8
1544.92	7/8
1542.97	6/8
1541.02	5/8
1539.06	4/8
1537.11	3/8
1535.16	2/8
1533.20	1/8
1531.25	0/8
1529.30	-1/8
1527.34	-2/8

8. OTHER INDICATORS

NatRSI (1day)	NatRSI (5day)	NatMoMo	ATR 10	Waist number
0.63	0.41	-38.96	15.73	1536.30
neutral	neutral			



9. WEEKLY ECONOMIC REPORTS (<http://www.tradethenews.com/weekly-calendar.php>)

Date	ET	Release	For	Actual	Briefing.com	Consensus	Prior
Sep 28	08:30	Personal Income	Aug		0.4%	0.4%	0.5%
Sep 28	08:30	Personal Spending	Aug		0.4%	0.4%	0.4%
Sep 28	08:30	Core PCE Inflation	Aug		0.1%	0.2%	0.1%
Sep 28	09:45	Chicago PMI	Sep		55.0	53.5	53.8
Sep 28	10:00	Construction Spending	Aug		-0.1%	-0.1%	-0.4%
Sep 28	10:00	Mich Sentiment-Rev.	Sep		83.8	84.0	83.8