



Daily trading plan for Sept. 27, 2007

1. ESZ7 IN PREVIOUS DAY

Open	High	Low	Closing
1536.50	1541.75	1530.25	1536.25

2. PIVOTS FOR ESU7

	Daily	Weekly	Monthly	Yearly
R3	1553.42	1629.67	1669.33	1722.00
R2	1547.58	1590.83	1589.92	1583.50
R1	1541.92	1562.67	1533.33	1506.00
PPT	1536.08	1523.83	1453.92	1367.50
S1	1530.42	1495.67	1397.33	1290.00
S2	1524.58	1456.83	1317.92	1151.50
S3	1518.92	1428.67	1261.33	1074.00

3. FOCUS NUMBERS (intra-day Position trading)

Sell levels	Buying levels
1543.75 (First Sell#)	1529 (first Buy#)
1554.25 (Second Sell#)	1523.25 (second Buy#)

4. MAJOR RESISTANCE AND SUPPORT LEVELS FOR TODAY

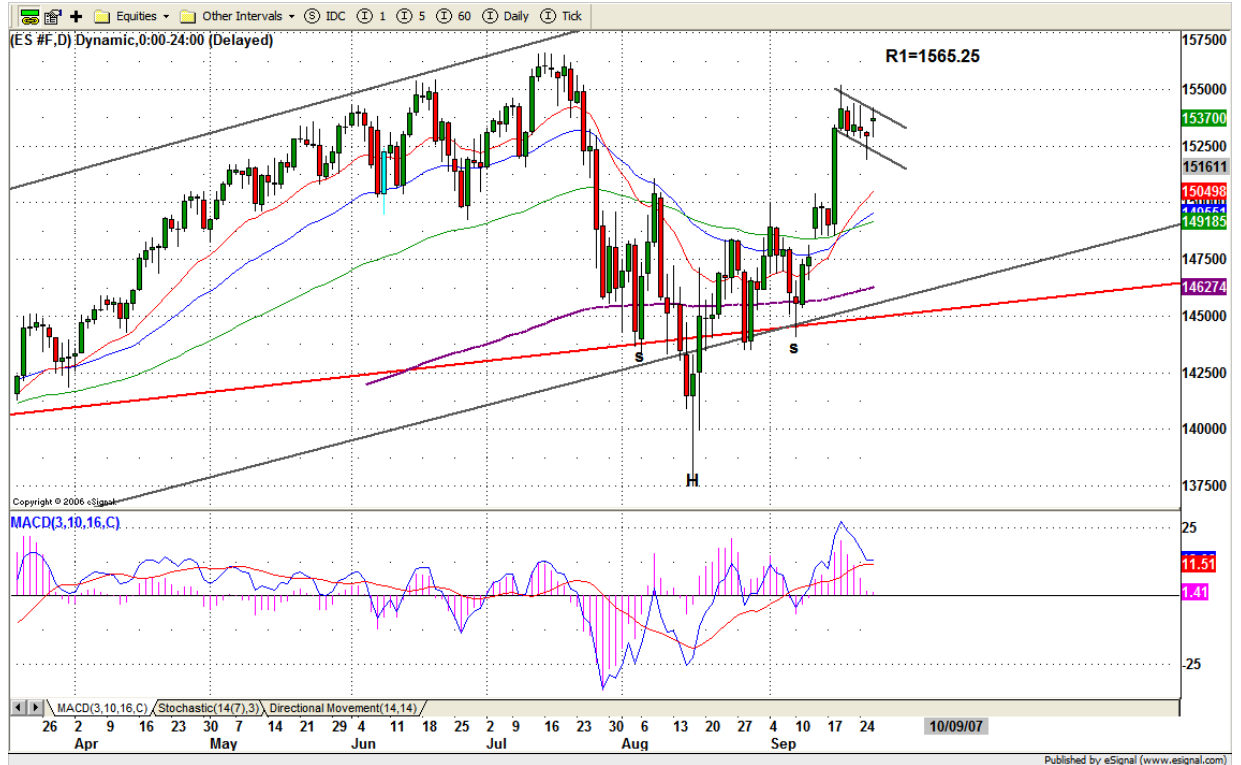
Resistance	1543.75	1547.25	1554.25	1556.75	1564.75
Support	1529.00	1523.50	1519.25	1516.00	1508.00

5. DAILY OUTLOOK

ES tried to breakout its flag pattern. Today and tomorrow is last two days of third quarter trading days, institutional "Window dressing" might play for a short-term rally.

GDP report will be out in the early morning. Later New Home sales report will be out 10am. If those reports are favorable, ES will go up and try to breakout 1541.75 again. Any breakout 1544 level will trigger bullish move, and push the price higher.

ESZ7 Daily Chart



6. TRADING STRATEGY FOR Sept. 27, 2007

Yesterday ES did its continuation upside move from its Tuesday's move. Even though it sold off in the middle of the day, the rumor helps to push price back.

Today ES could continue going up to retest 1541.75. If ES can breakout 1544 level, it is likely to see the price go higher in the later afternoon. If ES fails to breakout 1541.75 level, repeating yesterday's range move also is possible.

Intraday swing position entry on short side:
1541.75(Scalping) 1549.75 (agg) and 1554.25 (cons)
Intraday swing position entry on long side:
1533.50 (scalping) 1529 (agg) and 1523.75 (cons)

ESZ7 INTRADAY



7. PREDICTION FOR TODAY'S MOVEMENT

Current (interval=1.95)

1550.78	+2/8
1548.83	+1/8
1546.88	8/8
1544.92	7/8
1542.97	6/8
1541.02	5/8
1539.06	4/8
1537.11	3/8
1535.16	2/8
1533.20	1/8
1531.25	0/8
1529.30	-1/8
1527.34	-2/8

Up (Interval=1.95)

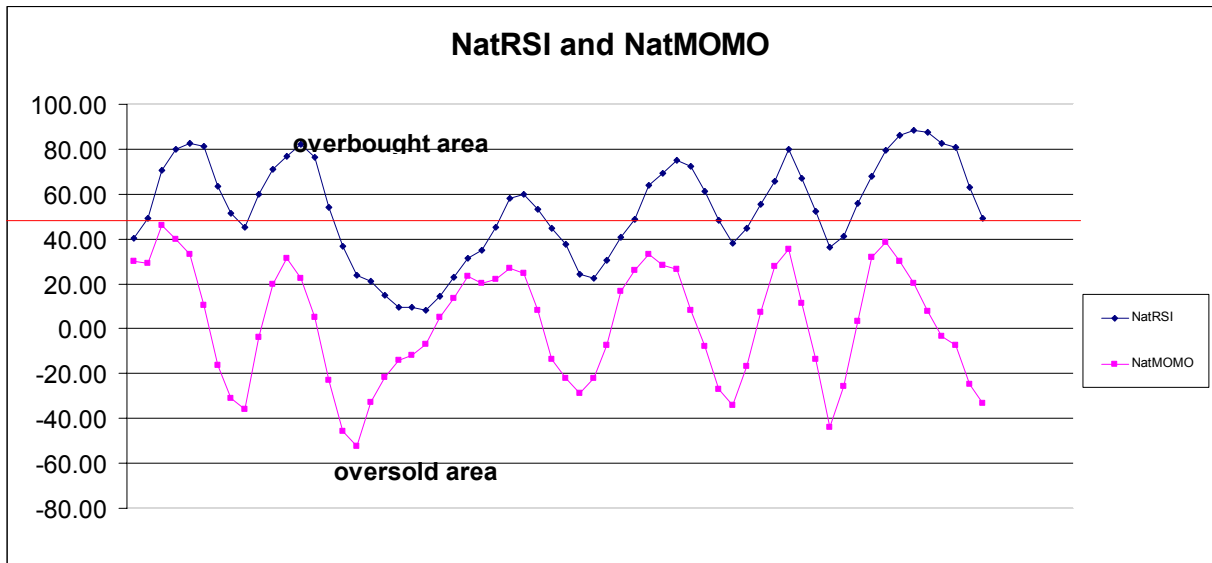
1550.78	+2/8
1548.83	+1/8
1546.88	8/8
1544.92	7/8
1542.97	6/8
1541.02	5/8
1539.06	4/8
1537.11	3/8
1535.16	2/8
1533.20	1/8
1531.25	0/8
1529.30	-1/8
1527.34	-2/8

Down (Interval=1.95)

1550.78	+2/8
1548.83	+1/8
1546.88	8/8
1544.92	7/8
1542.97	6/8
1541.02	5/8
1539.06	4/8
1537.11	3/8
1535.16	2/8
1533.20	1/8
1531.25	0/8
1529.30	-1/8
1527.34	-2/8

8. OTHER INDICATORS

NatRSI (1day)	NatRSI (5day)	NatMoMo	ATR 10	Waist number
0.49	0.49	-33.40	15.73	1536.30
neutral	neutral			



9. WEEKLY ECONOMIC REPORTS (<http://www.tradethenews.com/weekly-calendar.php>)

Date	ET	Release	For	Actual	Briefing.com	Consens us	Prior
Sep 27	08:30	GDP-Final	Q2		4.0%	3.9%	4.0%
Sep 27	08:30	Chain Deflator-Final	Q2		2.7%	2.7%	2.7%
Sep 27	08:30	Initial Claims	09/22		315K	NA	311K
Sep 27	10:00	Help-Wanted Index	Aug		25	24	25
Sep 27	10:00	New Home Sales	Aug		830K	830K	870K
Sep 28	08:30	Personal Income	Aug		0.4%	0.4%	0.5%
Sep 28	08:30	Personal Spending	Aug		0.4%	0.4%	0.4%
Sep 28	08:30	Core PCE Inflation	Aug		0.1%	0.2%	0.1%
Sep 28	09:45	Chicago PMI	Sep		55.0	53.5	53.8
Sep 28	10:00	Construction Spending	Aug		-0.1%	-0.1%	-0.4%
Sep 28	10:00	Mich Sentiment-Rev.	Sep		83.8	84.0	83.8