



## Daily trading plan for Sept. 21, 2007

### 1. ESZ7 IN PREVIOUS DAY

Open	High	Low	Closing
1541.25	1542.25	1528.75	1531.75

### 2. PIVOTS FOR ESU7

	Daily	Weekly	Monthly	Yearly
R3	1553.25	1584.75	1669.33	1722.00
R2	1547.75	1544.50	1589.92	1583.50
R1	1539.75	1521.25	1533.33	1506.00
<b>PPT</b>	<b>1534.25</b>	<b>1481.00</b>	<b>1453.92</b>	<b>1367.50</b>
S1	1526.25	1457.75	1397.33	1290.00
S2	1520.75	1417.50	1317.92	1151.50
S3	1512.75	1394.25	1261.33	1074.00

### 3. FOCUS NUMBERS (intra-day Position trading)

Sell levels	Buying levels
1540.75-43.75 (First Sell#)	1518.00 (first Buy#)
1552.75 (Second Sell#)	1507.50 (second Buy#)

### 4. MAJOR RESISTANCE AND SUPPORT LEVELS FOR TODAY

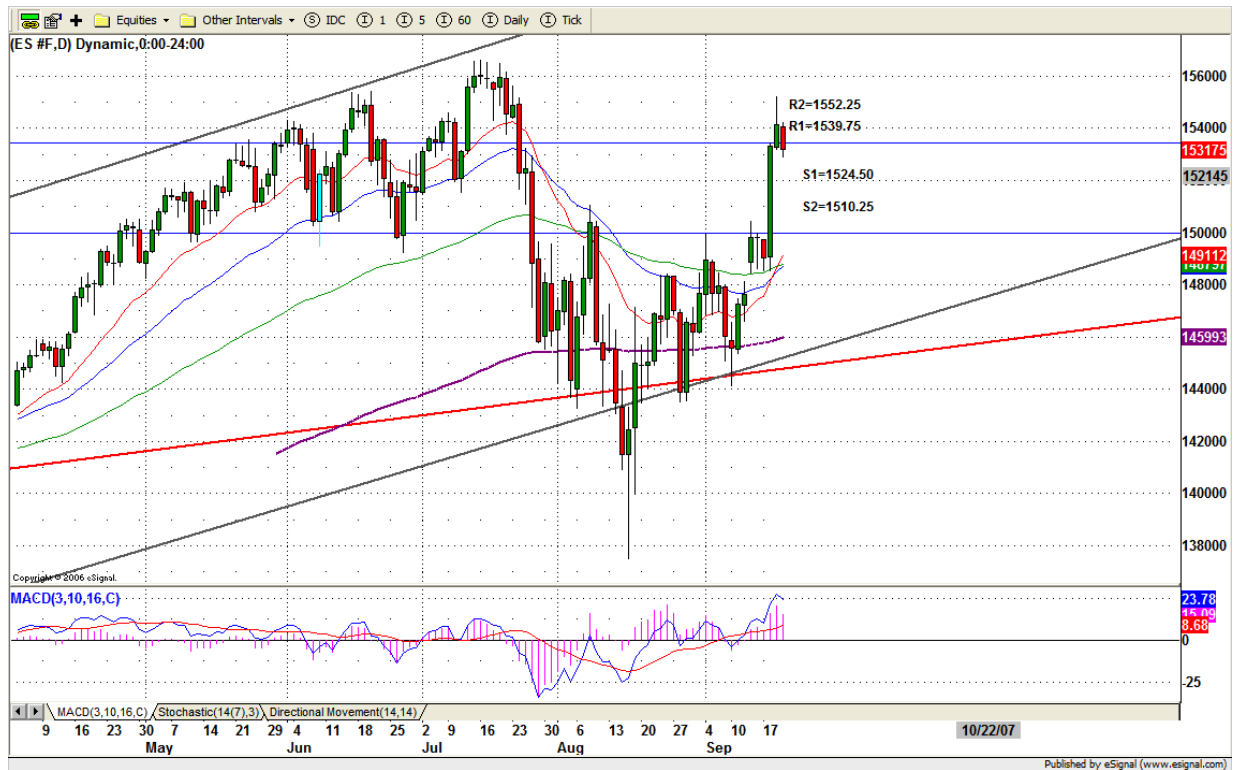
<b>Resistance</b>	1539.75	1544.50	1447.75	1553.25	1562.25
<b>Support</b>	1524.50	1520.75	1512.75	1510.25	1507.25

## 5. DAILY OUTLOOK

Yesterday morning, every dip was bought by public until later lunch time. ES broke down first hour intraday range and created a stop run for the BULLS. Even though the trading range is very small, it gave us a hint that we might have already seen the top of the retracement from the Aug. 16 low. Therefore, Today ES could make one more day around the current high level in preparation for a downside move next week. Also today is CIT day plus option expiration, it will make a choppy trading day.

**Remember Today is a Quadruple Witching day.**

### ESZ7 Daily Chart



## 6. TRADING STRATEGY FOR Sept. 21, 2007

Yesterday ES did what we said --- profit taking. It hit our support level 1528.75 level and bounced up for closing.

Today we could see ES go both directions.

In the early morning, if 1528-26 range can be held, ES could go up to 1539.75 for first testing. Breakout 1543, upside momentum will be picked up again and push price for higher closing. If ES fails to breakout 1539.75, ES could go back down 1528-26 range. Breakdown 1524.50 level, it is likely to see price to go down further to 1518-16 or lower to 1510.50 level for lower closing.

Today is Quadruple Witching day. Anything can happen.

**Intraday swing position entry on short side:**  
**1539.75(Scalping) 1546.75 (agg) and 1552-55.00 (cons)**  
**Intraday swing position entry on long side:**  
**1524.75 (scalping) 1518.50 (agg) and 1510.25-07.75 (cons)**

## ESZ7 INTRADAY



## 7. PREDICTION FOR TODAY'S MOVEMENT

### Current (interval=1.95)

1550.78	+2/8
1548.83	+1/8
1546.88	8/8
1544.92	7/8
1542.97	6/8
1541.02	5/8
1539.06	4/8
1537.11	3/8
1535.16	2/8
1533.20	1/8
1531.25	0/8
1529.30	-1/8
1527.34	-2/8

### Up (Interval=3.90)

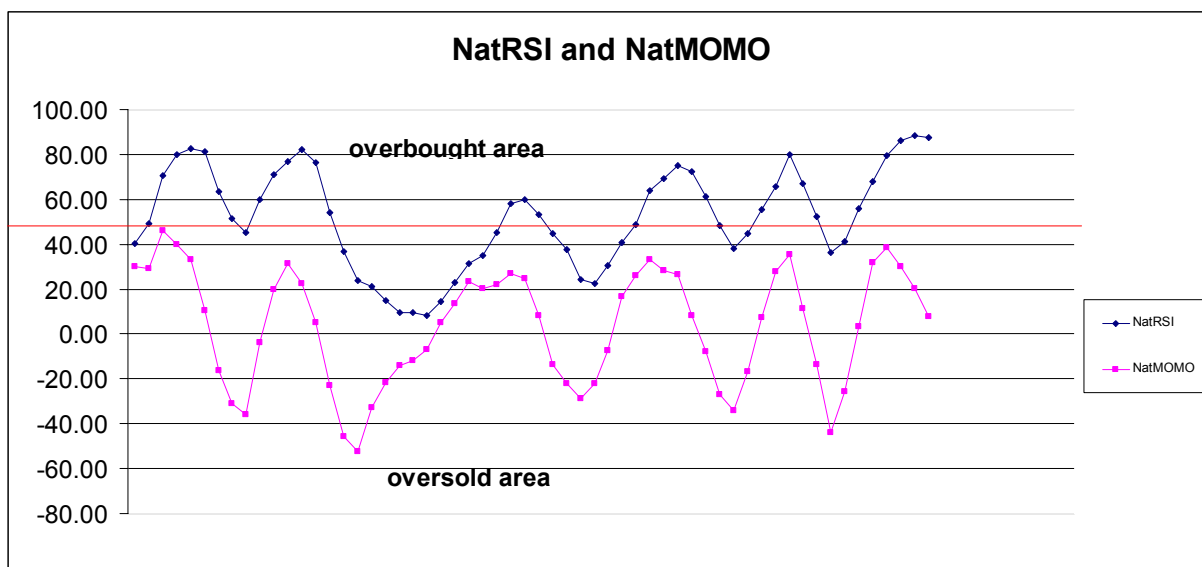
1570.31	+2/8
1566.41	+1/8
1562.50	8/8
1558.59	7/8
1554.69	6/8
1550.78	5/8
1546.88	4/8
1542.97	3/8
1539.06	2/8
1535.16	1/8
1531.25	0/8
1527.34	-1/8
1523.44	-2/8

### Down (Interval=3.90)

1539.06	+2/8
1535.16	+1/8
1531.25	8/8
1527.34	7/8
1523.44	6/8
1519.53	5/8
1515.63	4/8
1511.72	3/8
1507.81	2/8
1503.91	1/8
1500.00	0/8
1496.09	-1/8
1492.19	-2/8

## 8. OTHER INDICATORS

NatRSI (1day)	NatRSI (5day)	NatMoMo	ATR 10	Waist number
0.14	0.87	7.49	18.63	1535.25
Oversold	Overbought			



**9. WEEKLY ECONOMIC REPORTS (<http://www.tradethenews.com/weekly-calendar.php>)**