



## Daily trading plan for Sept. 20, 2007

### 1. ESZ7 IN PREVIOUS DAY

Open	High	Low	Closing
1543.00	1552.00	1535.25	1541.50

### 2. PIVOTS FOR ESU7

	Daily	Weekly	Monthly	Yearly
R3	1567.33	1584.75	1669.33	1722.00
R2	1559.67	1544.50	1589.92	1583.50
R1	1550.58	1521.25	1533.33	1506.00
<b>PPT</b>	<b>1542.92</b>	<b>1481.00</b>	<b>1453.92</b>	<b>1367.50</b>
S1	1533.83	1457.75	1397.33	1290.00
S2	1526.17	1417.50	1317.92	1151.50
S3	1517.08	1394.25	1261.33	1074.00

### 3. FOCUS NUMBERS (intra-day Position trading)

Sell levels	Buying levels
1558.25-59.75 (First Sell#)	1529.00 (first Buy#)
1564.50-66 (Second Sell#)	1518.50 (second Buy#)

### 4. MAJOR RESISTANCE AND SUPPORT LEVELS FOR TODAY

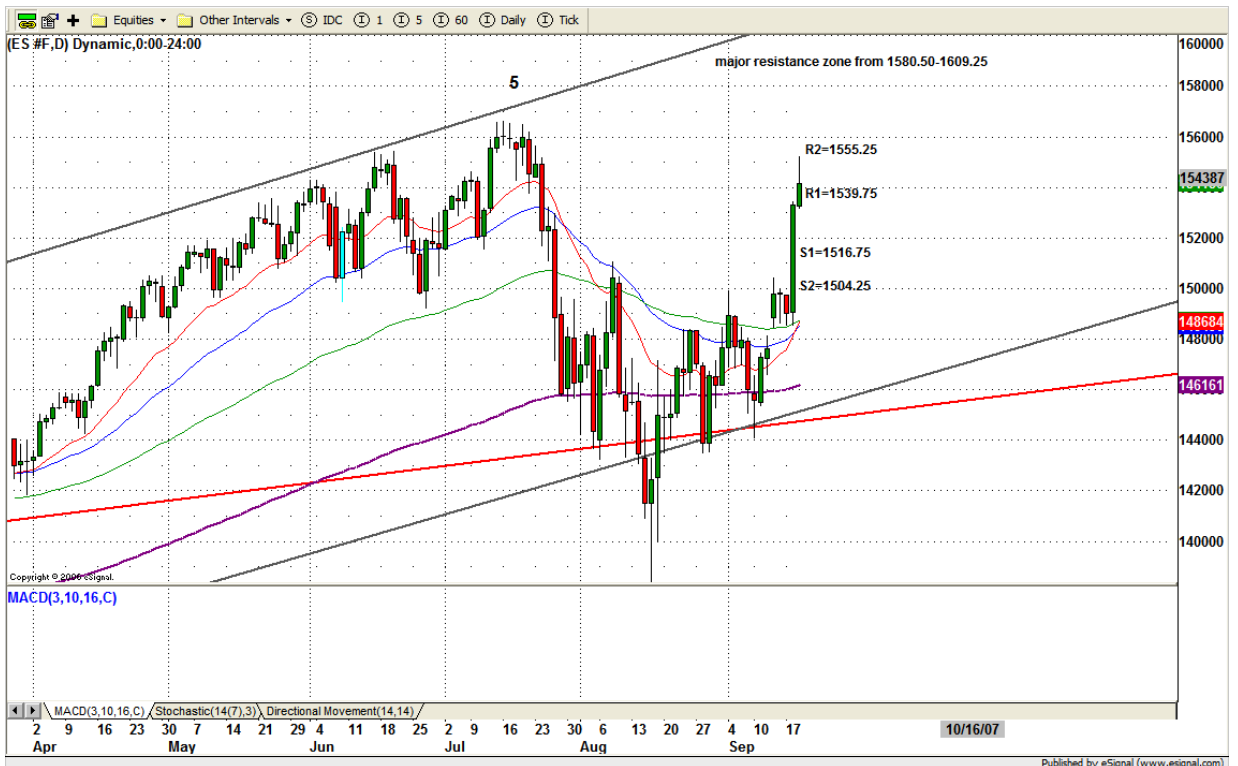
<b>Resistance</b>	1546.75	1551.75	1559.75	1562.25	1567.25
<b>Support</b>	1531.25	1526.50	1518.75	1510.25	1506.25

## 5. DAILY OUTLOOK

Yesterday was a solid follow through on increased volume and strongly suggests that the current rally was real. Today we could see a profit taking, but any pullback also will be bought again.

Remember Friday is a Quadruple Witching day.

### ESZ7 Daily Chart



## 6. TRADING STRATEGY FOR Sept. 20, 2007

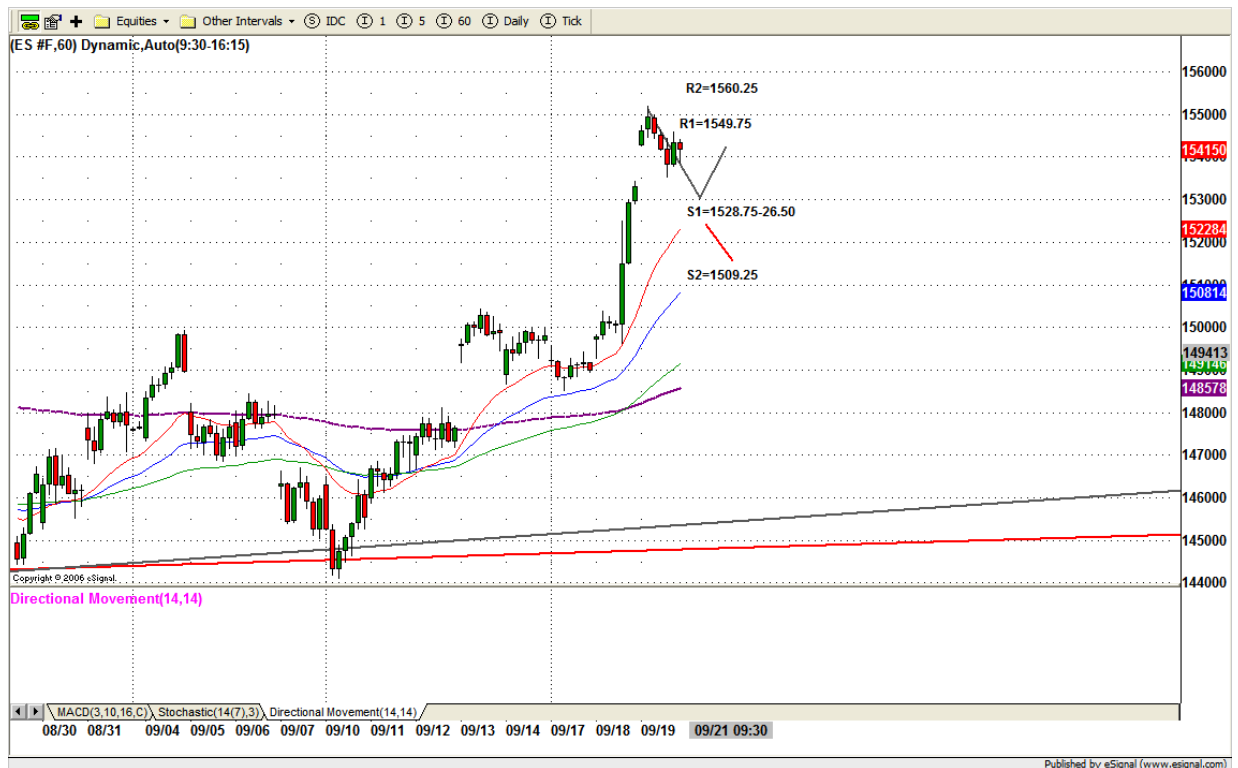
Yesterday ES made its continuation buying in the early morning, but after 11am, ES started sliding down to the end. That was profit taking and also related option expiration on coming Friday.

Today we should see ES makes a further more down –profiting taking from past two days' rally. But I also expect any weakness should be bought on every dip.

Mr. Ben will give a speech on 10am. If nothing in particular happens, ES will try to hold up above 1531-29 range. If his words are not favorable to the market, price could slide down further to 1523-18 range.

**Intraday swing position entry on short side:**  
**1546.75(Scalping) 1552.75 (agg) and 1560.00 (cons)**  
**Intraday swing position entry on long side:**  
**1531.25 (scalping) 1526.50 (agg) and 1518.25 (cons)**

## ESZ7 INTRADAY



## 7. PREDICTION FOR TODAY'S MOVEMENT

### Current (interval=1.95)

1558.59	+2/8
1556.64	+1/8
1554.69	8/8
1552.73	7/8
1550.78	6/8
1548.83	5/8
1546.88	4/8
1544.92	3/8
1542.97	2/8
1541.02	1/8
1539.06	0/8
1537.11	-1/8
1535.16	-2/8

### Up (Interval=3.90)

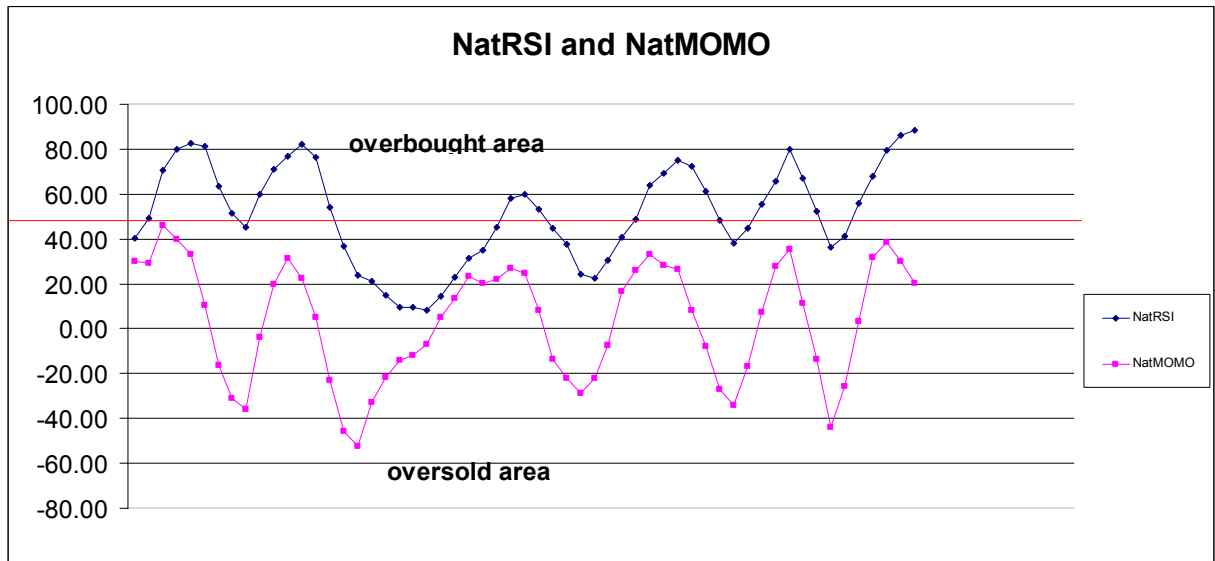
1570.31	+2/8
1566.41	+1/8
1562.50	8/8
1558.59	7/8
1554.69	6/8
1550.78	5/8
1546.88	4/8
1542.97	3/8
1539.06	2/8
1535.16	1/8
1531.25	0/8
1527.34	-1/8
1523.44	-2/8

### Down (Interval=3.90)

1554.69	+2/8
1550.78	+1/8
1546.88	8/8
1542.97	7/8
1539.06	6/8
1535.16	5/8
1531.25	4/8
1527.34	3/8
1523.44	2/8
1519.53	1/8
1515.63	0/8
1511.72	-1/8
1507.81	-2/8

## 8. OTHER INDICATORS

NatRSI (1day)	NatRSI (5day)	NatMoMo	ATR 10	Waist number
0.45	0.88	20.33	17.93	1515.50
neutral	Overbought			



## 9. WEEKLY ECONOMIC REPORTS (<http://www.tradethenews.com/weekly-calendar.php>)

Date	ET	Release	For	Actual	Briefing.com	Consensus	Prior
Sep 20	08:30	<a href="#">Initial Claims</a>	09/15		320K	NA	319K
Sep 20	10:00	<a href="#">Leading Indicators</a>	Aug		-0.5%	0.0%	0.4%
Sep 20	12:00	<a href="#">Philadelphia Fed</a>	Sep		5.0	2.0	0.0