



Daily trading plan for Sept. 19, 2007

1. ESZ7 IN PREVIOUS DAY

Open	High	Low	Closing
1497.00	1534.25	1492.50	1533.00

2. PIVOTS FOR ESU7

	Daily	Weekly	Monthly	Yearly
R3	1589.08	1584.75	1669.33	1722.00
R2	1561.67	1544.50	1589.92	1583.50
R1	1547.33	1521.25	1533.33	1506.00
PPT	1519.92	1481.00	1453.92	1367.50
S1	1505.58	1457.75	1397.33	1290.00
S2	1478.17	1417.50	1317.92	1151.50
S3	1463.83	1394.25	1261.33	1074.00

3. FOCUS NUMBERS (intra-day Position trading)

Sell levels	Buying levels
1536.50 (First Sell#)	1516.50 (first Buy#)
1554.50 (Second Sell#)	1508.25 (second Buy#)

4. MAJOR RESISTANCE AND SUPPORT LEVELS FOR TODAY

Resistance	1535.75	1539.50	1546.50	1449.75	1554.75
Support	1521.25	1517.50	1512.75	1510.25	1506.25

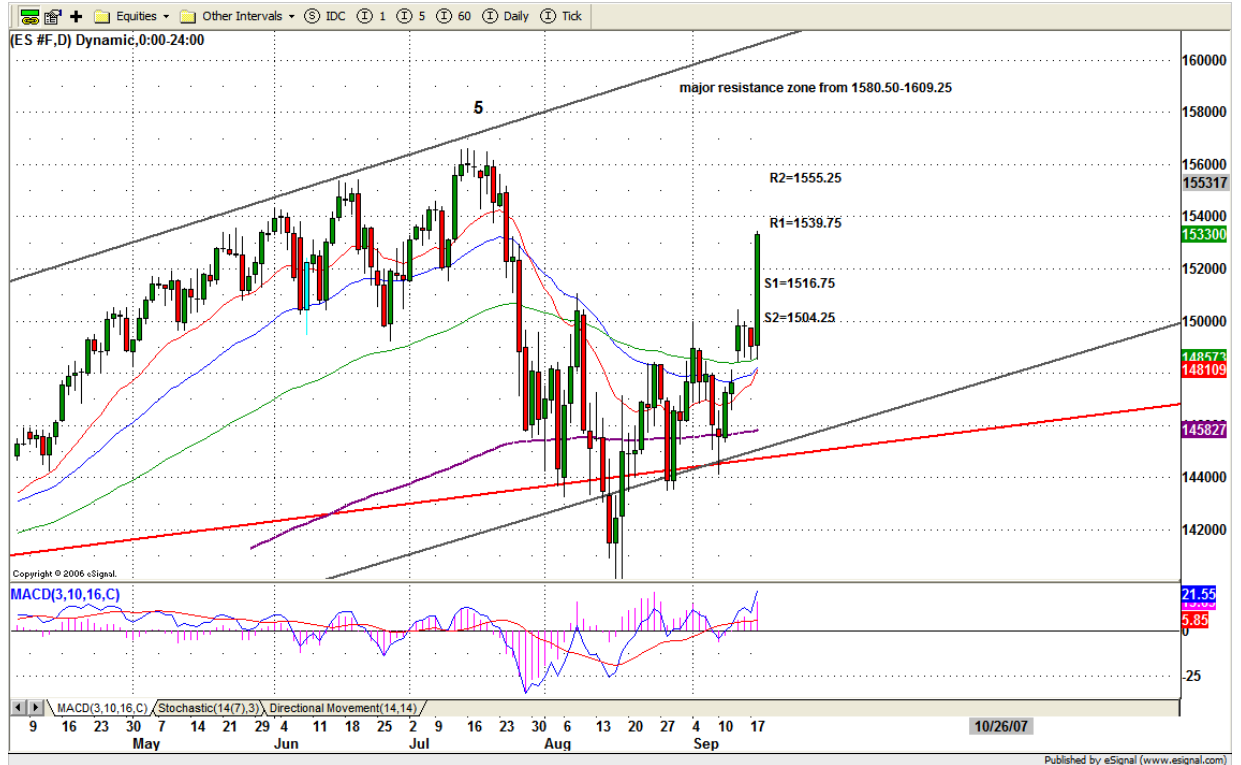
5. DAILY OUTLOOK

ES broke out its major resistance level 1512.50 after Fed announcement. Shorts rushed to cover and pushed price high level for closing.

Today in the early morning, upside MOMO will continue if 1521-19.50 level holds.

Remember Friday is a Quadruple Witching day.

ESZ7 Daily Chart



6. TRADING STRATEGY FOR Sept. 19, 2007

Yesterday ES made its expansion move after NR7. Today any pullback will be bought. All 20ema lines from 5, 10 and 15 min charts will become buying entries in the early morning. If ES can breakout 1535.75 level, more upside move will occur.

In the early morning, 1521.50-19.50 and 1515.75-1514.50 are buying entries. And 1546.50-49 is shorting entry. 1535.75 is key line.

Intraday swing position entry on short side:
1536.75(Scalping) 1546.75 (agg) and 1555.75 (cons)
Intraday swing position entry on long side:
1519.25 (scalping) 1514.50 (agg) and 1506.25 (cons)

ESZ7 INTRADAY



7. PREDICTION FOR TODAY'S MOVEMENT

Current (interval=3.90)

1539.06	+2/8
1535.16	+1/8
1531.25	8/8
1527.34	7/8
1523.44	6/8
1519.53	5/8
1515.63	4/8
1511.72	3/8
1507.81	2/8
1503.91	1/8
1500.00	0/8
1496.09	-1/8
1492.19	-2/8

Up (Interval=3.90)

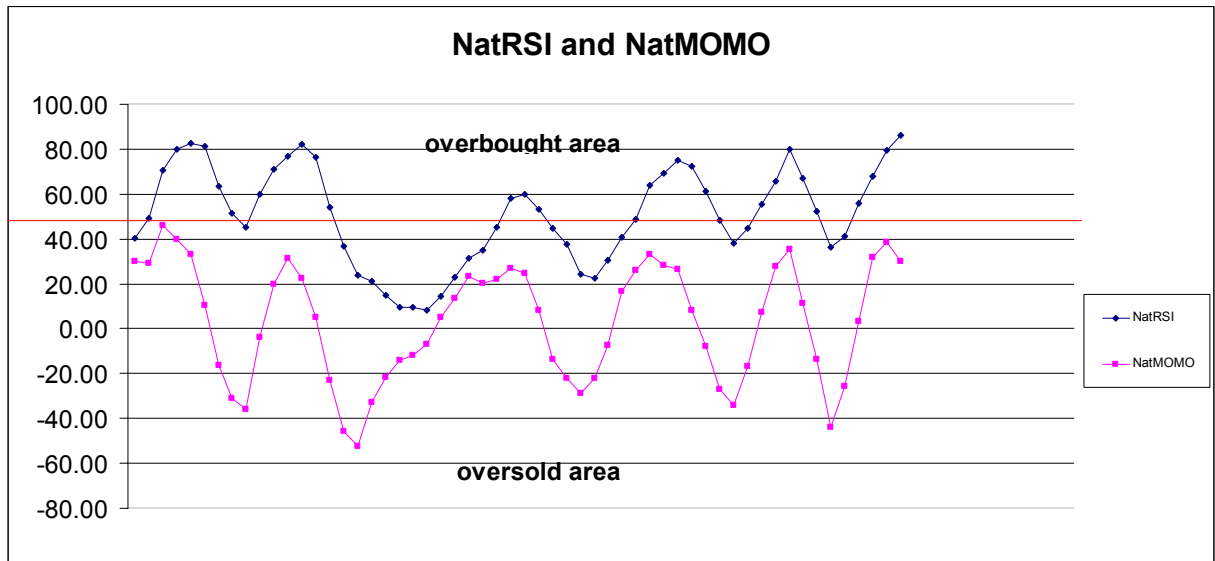
1554.69	+2/8
1550.78	+1/8
1546.88	8/8
1542.97	7/8
1539.06	6/8
1535.16	5/8
1531.25	4/8
1527.34	3/8
1523.44	2/8
1519.53	1/8
1515.63	0/8
1511.72	-1/8
1507.81	-2/8

Down (Interval=3.90)

1539.06	+2/8
1535.16	+1/8
1531.25	8/8
1527.34	7/8
1523.44	6/8
1519.53	5/8
1515.63	4/8
1511.72	3/8
1507.81	2/8
1503.91	1/8
1500.00	0/8
1496.09	-1/8
1492.19	-2/8

8. OTHER INDICATORS

NatRSI (1day)	NatRSI (5day)	NatMoMo	ATR 10	Waist number
0.93	0.86	30.22	17.93	1515.50
Overbought	Overbought			



9. WEEKLY ECONOMIC REPORTS (<http://www.tradethenews.com/weekly-calendar.php>)

Date	ET	Release	For	Actual	Briefing.com	Consensus	Prior
Sep 19	08:30	CPI	Aug		-0.2%	0.0%	0.1%
Sep 19	08:30	Core CPI	Aug		0.1%	0.2%	0.2%
Sep 19	08:30	Housing Starts	Aug		1365K	1360K	1381K
Sep 19	08:30	Building Permits	Aug		1355K	1350K	1373K
Sep 19	10:30	Crude Inventories	09/14		NA	NA	-7011K
Sep 20	08:30	Initial Claims	09/15		320K	NA	319K
Sep 20	10:00	Leading Indicators	Aug		-0.5%	0.0%	0.4%
Sep 20	12:00	Philadelphia Fed	Sep		5.0	2.0	0.0