



Daily trading plan for Sept. 14, 2007

1. ESZ7 IN PREVIOUS DAY

Open	High	Low	Closing
1495.50	1504.25	1491.50	1498.00

2. PIVOTS FOR ESU7

	Daily	Weekly	Monthly	Yearly
R3	1517.08	1538.25	1669.33	1722.00
R2	1510.67	1518.75	1589.92	1583.50
R1	1504.33	1489.25	1533.33	1506.00
PPT	1497.92	1469.75	1453.92	1367.50
S1	1491.58	1440.25	1397.33	1290.00
S2	1485.17	1420.75	1317.92	1151.50
S3	1478.83	1391.25	1261.33	1074.00

3. FOCUS NUMBERS (intra-day Position trading)

Sell levels	Buying levels
1506.25-1507.75 (Sell#)	1489.50 (first Buy#)
1512.75 (Second Sell#)	1483.50 (second Buy#)

4. MAJOR RESISTANCE AND SUPPORT LEVELS FOR TODAY

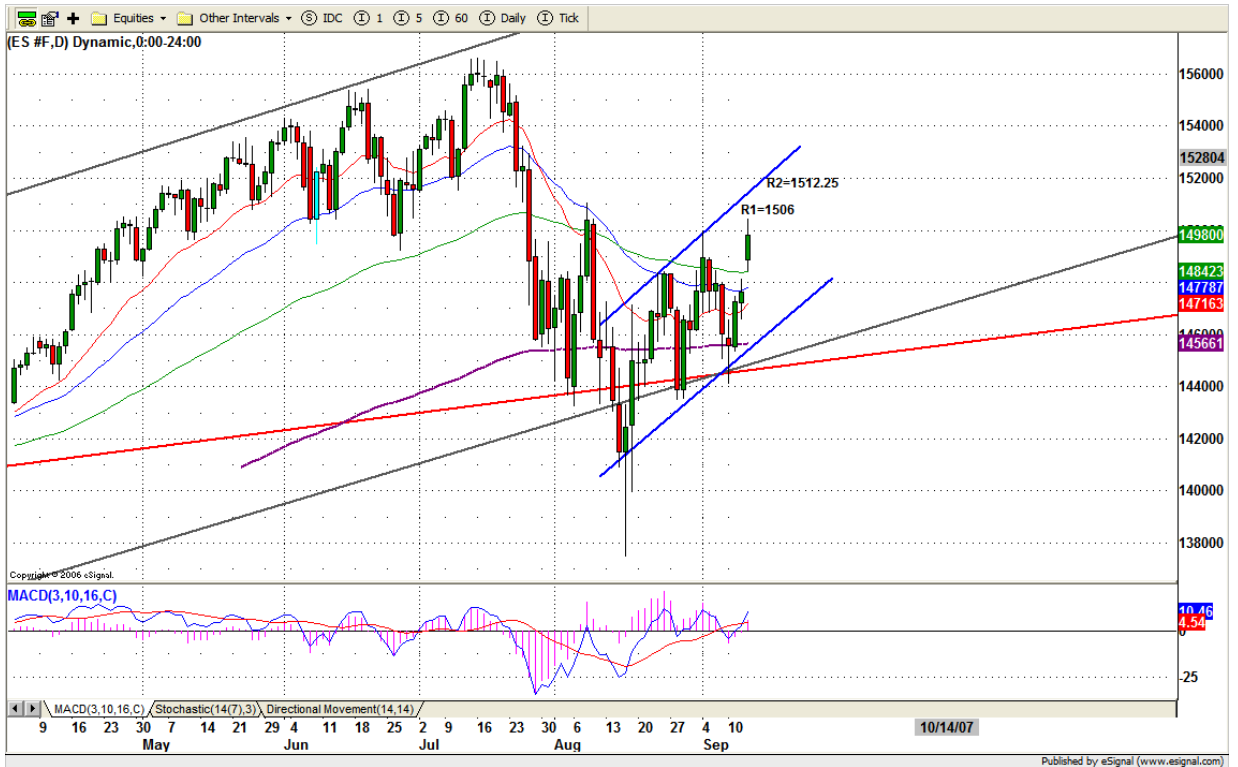
Resistance	1495.75	1499.50	1502.75	1507.25	1512.75
Support	1481.50	1476.25	1472.25	1469.75	1465.50

5. DAILY OUTLOOK

ROLLOVER day triggered shorts covering yesterday. But it lacked true buyers. As soon as this kind of counter rally finishes, the new declining move will show up. If today's retail sale report is not good, ES could dip 20 points and retests 1484 or lower to 1478-75 range.

As long as ES doesn't breakout 1512.50 -1515 range, ES remains inside bear flag.

ESZ7 Daily Chart



6. TRADING STRATEGY FOR Sept. 14, 2007

ROLLOVER Day made a gap up movement. Even though ES didn't close the gap yesterday, it is possible to close it today. Today key line = 1489.25. Breakdown it, ES likely goes down to 1476.50 to close old contract's gap. If ES can hold above 1489.25 level, then yesterday's high could be retested.

If today ES gaps down at open, and is unable to move back up to 1498 level, then ES could go lower. Keep this in your mind.

Intraday swing position entry on short side:
1506.75(Scalping) 1512.75 (agg) and 1515.75 (cons)
Intraday swing position entry on long side:
1489.25 (scalping) 1480.50 (agg) and 1475.25 (cons)

ESZ7 INTRADAY



7. PREDICTION FOR TODAY'S MOVEMENT

Current (interval=1.95)

1511.72	+2/8
1509.77	+1/8
1507.81	8/8
1505.86	7/8
1503.91	6/8
1501.95	5/8
1500.00	4/8
1498.05	3/8
1496.09	2/8
1494.14	1/8
1492.19	0/8
1490.23	-1/8
1488.28	-2/8

Up (Interval=3.90)

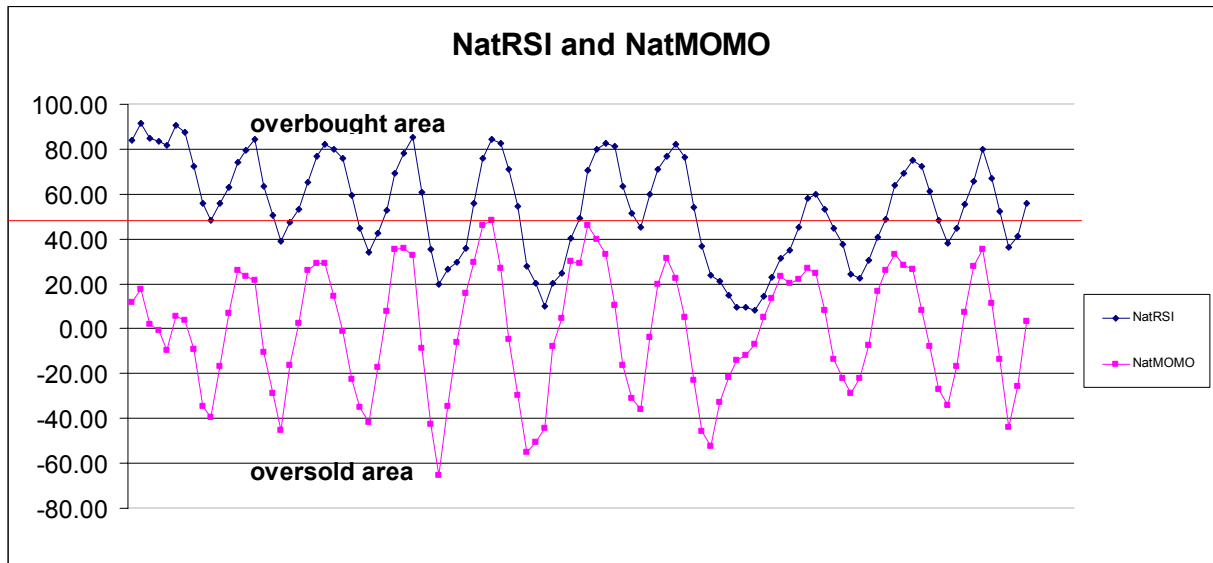
1523.44	+2/8
1519.53	+1/8
1515.63	8/8
1511.72	7/8
1507.81	6/8
1503.91	5/8
1500.00	4/8
1496.09	3/8
1492.19	2/8
1488.28	1/8
1484.38	0/8
1480.47	-1/8
1476.56	-2/8

Down (Interval=3.90)

1507.81	+2/8
1503.91	+1/8
1500.00	8/8
1496.09	7/8
1492.19	6/8
1488.28	5/8
1484.38	4/8
1480.47	3/8
1476.56	2/8
1472.66	1/8
1468.75	0/8
1464.84	-1/8
1460.94	-2/8

8. OTHER INDICATORS

NatRSI (1day)	NatRSI (5day)	NatMoMo	ATR 10	Waist number
0.59	0.56	3.50	17.53	1497.13
neutral	neutral			



9. WEEKLY ECONOMIC REPORTS (<http://www.tradethenews.com/weekly-calendar.php>)

Date	ET	Release	For	Actual	Briefing.com	Consensus	Prior
Sep 14	08:30	Current Account	Q2		-\$192.0B	-\$190.0B	-\$192.6B
Sep 14	08:30	Export Prices ex-ag.	Aug		NA	NA	0.0%
Sep 14	08:30	Import Prices ex-oil	Aug		NA	NA	0.2%
Sep 14	08:30	Retail Sales	Aug		0.6%	0.5%	0.3%
Sep 14	08:30	Retail Sales ex-auto	Aug		0.0%	0.2%	0.4%
Sep 14	09:15	Industrial Production	Aug		0.4%	0.3%	0.3%
Sep 14	09:15	Capacity Utilization	Aug		82.1%	82.0%	81.9%
Sep 14	10:00	Business Inventories	Jul		0.3%	0.3%	0.4%
Sep 14	10:00	Mich Sentiment-Prel.	Sep		83.0	83.5	83.4