



## Daily trading plan for Sept. 12, 2007

### 1. ESU7 IN PREVIOUS DAY

Open	High	Low	Closing
1459.00	1474.50	1458.50	1472.75

### 2. PIVOTS FOR ESU7

	Daily	Weekly	Monthly	Yearly
R3	1494.67	1538.25	1669.33	1722.00
R2	1484.58	1518.75	1589.92	1583.50
R1	1478.67	1489.25	1533.33	1506.00
<b>PPT</b>	<b>1468.58</b>	<b>1469.75</b>	<b>1453.92</b>	<b>1367.50</b>
S1	1462.67	1440.25	1397.33	1290.00
S2	1452.58	1420.75	1317.92	1151.50
S3	1446.67	1391.25	1261.33	1074.00

### 3. FOCUS NUMBERS (intra-day Position trading)

Sell levels	Buying levels
1479.50 (Sell#)	1464.75(first Buy#)
1491.75-93.25 (Second Sell#)	1455.25-53.25 (second Buy#)

### 4. MAJOR RESISTANCE AND SUPPORT LEVELS FOR TODAY

<b>Resistance</b>	1480.50	1484.25	1488.25	1494.75	1501.75
<b>Support</b>	1464.75	1459.25	1453.25	1450.25	1445.50

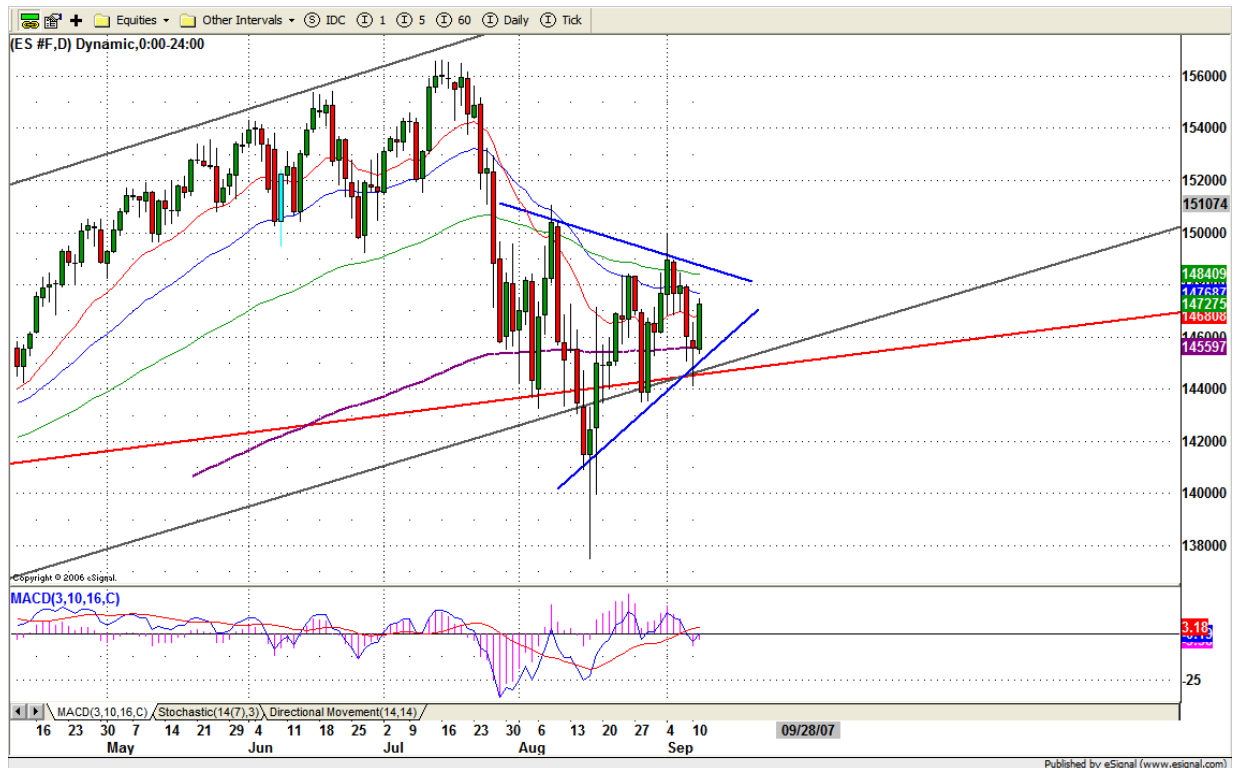
## 5. DAILY OUTLOOK

Yesterday ES continues traveling within its daily triangle pattern. As long as 200 day moving average line holds up the price, ES will keep struggling with 20 and 40 day moving average lines until it can fully move above them.

Today ES may go up to fill the gap around 1479.50 area before it moves down again to test 1464.75 level. Tomorrow is a rollover day for Dec. contract. Squeezing the premium move could occur today and tomorrow.

Triangle resistance level is 1486.75 and support level is 1455.25

### ESU7 DAILY Chart



## 6. TRADING STRATEGY FOR Sept. 12, 2007

Today 1475 is key. Breakout from it, we are likely to see ES fill the gap around 1479.50-80.50 area. If later ES continues holding price above 1475 level, 1486-84 could be retested and another gap around 1489.50 also could be filled in the later afternoon. But if ES fails to breakout 1484 in later afternoon, then it is likely for ES to move down to test 1475 or further down to 1464.25 level.

If ES gaps down at the open, we are likely to see it test 1464.25, yesterday's 30 min range breakout level. As long as 1464.25 level holds the price up, 1474-75 could be retested again. Watch for double top breakout move around that level. If it does, follow the instructions in the first paragraph.

**Intraday swing position entry on short side:**  
**1479.75(Scalping) 1484.75 (agg) and 1489.50-92.25 (cons)**  
**Intraday swing position entry on long side:**  
**1464.25 (scalping) 1455.25 (agg) and 1449.25 (cons)**

### ESU7 INTRADAY



## 7. PREDICTION FOR TODAY'S MOVEMENT

### Current (interval=3.90)

1476.56	+2/8
1472.66	+1/8
1468.75	8/8
1464.84	7/8
1460.94	6/8
1457.03	5/8
1453.13	4/8
1449.22	3/8
1445.31	2/8
1441.41	1/8
1437.50	0/8
1433.59	-1/8
1429.69	-2/8

### Up (Interval=3.90)

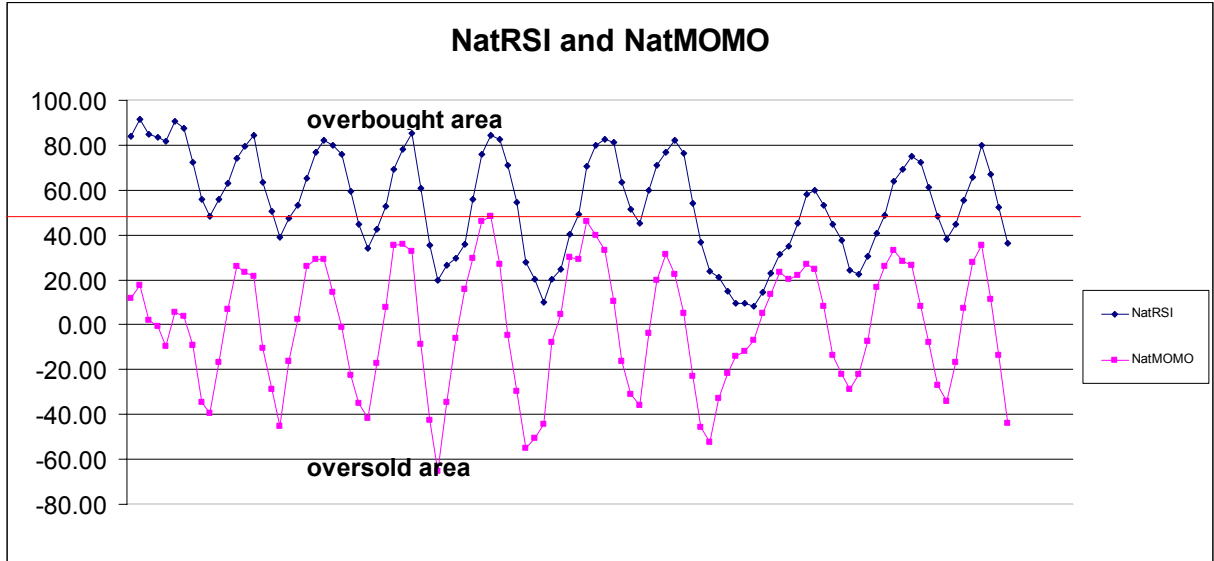
1507.81	+2/8
1503.91	+1/8
1500.00	8/8
1496.09	7/8
1492.19	6/8
1488.28	5/8
1484.38	4/8
1480.47	3/8
1476.56	2/8
1472.66	1/8
1468.75	0/8
1464.84	-1/8
1460.94	-2/8

### Down (Interval=3.90)

1492.19	+2/8
1488.28	+1/8
1484.38	8/8
1480.47	7/8
1476.56	6/8
1472.66	5/8
1468.75	4/8
1464.84	3/8
1460.94	2/8
1457.03	1/8
1453.13	0/8
1449.22	-1/8
1445.31	-2/8

## 8. OTHER INDICATORS

NatRSI (1day)	NatRSI (5day)	NatMoMo	ATR 10	Waist number
0.93	0.36	-43.92	20.43	1465.88
Overbought	neutral			



**9. WEEKLY ECONOMIC REPORTS** (<http://www.tradethenews.com/weekly-calendar.php>)

Date	ET	Release	For	Actual	Briefing.com	Consensus	Prior
Sep 12	10:30	Crude Inventories	09/07	NA	NA	NA	-3972K
Sep 13	08:30	Initial Claims	09/08	325K	330K	330K	318K
Sep 13	14:00	Treasury Budget	Aug	-\$100.0B	-\$85.0B	-\$85.0B	-\$64.7B
Sep 14	08:30	Current Account	Q2	-\$192.0B	-\$190.0B	-\$190.0B	-\$192.6B
Sep 14	08:30	Export Prices ex-ag.	Aug	NA	NA	NA	0.0%
Sep 14	08:30	Import Prices ex-oil	Aug	NA	NA	NA	0.2%
Sep 14	08:30	Retail Sales	Aug	0.6%	0.5%	0.5%	0.3%
Sep 14	08:30	Retail Sales ex-auto	Aug	0.0%	0.2%	0.2%	0.4%
Sep 14	09:15	Industrial Production	Aug	0.4%	0.3%	0.3%	0.3%
Sep 14	09:15	Capacity Utilization	Aug	82.1%	82.0%	82.0%	81.9%
Sep 14	10:00	Business Inventories	Jul	0.3%	0.3%	0.3%	0.4%
Sep 14	10:00	Mich Sentiment-Prel.	Sep	83.0	83.0	83.5	83.4