



Daily trading plan for Sept. 11, 2007

1. ESU7 IN PREVIOUS DAY

Open	High	Low	Closing
1463.00	1464.75	1440.75	1455.25

2. PIVOTS FOR ESU7

	Daily	Weekly	Monthly	Yearly
R3	1490.42	1538.25	1669.33	1722.00
R2	1477.58	1518.75	1589.92	1583.50
R1	1466.42	1489.25	1533.33	1506.00
PPT	1453.58	1469.75	1453.92	1367.50
S1	1442.42	1440.25	1397.33	1290.00
S2	1429.58	1420.75	1317.92	1151.50
S3	1418.42	1391.25	1261.33	1074.00

3. FOCUS NUMBERS (intra-day Position trading)

Sell levels	Buying levels
1464.75-1465.50 (Sell#)	1440.25(first Buy#)
1479.25 (Second Sell#)	1431.25 (second Buy#)

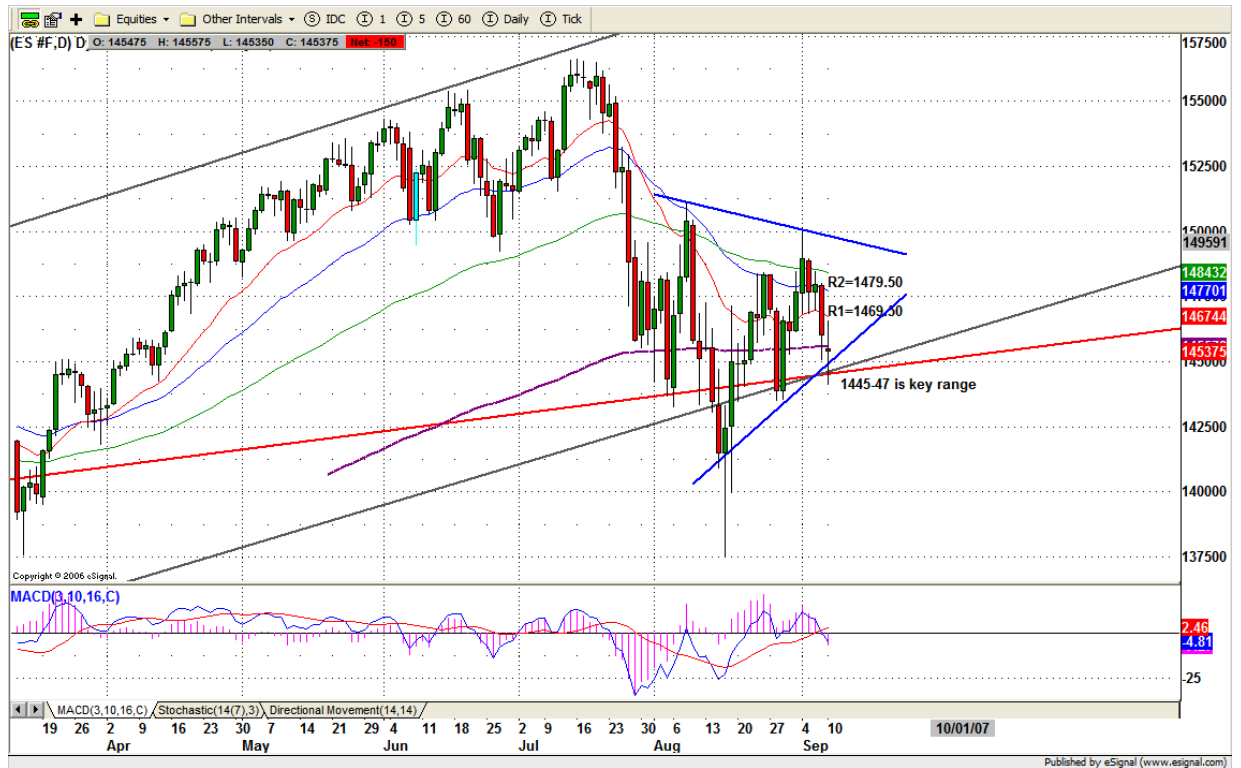
4. MAJOR RESISTANCE AND SUPPORT LEVELS FOR TODAY

Resistance	1466.75	1469.75	1479.50	1484.75	1489.25
Support	1442.25	1440.25	1429.25	1425.75	1418.75

5. DAILY OUTLOOK

Yesterday ES bounced from early morning session low and closed below the 200 day moving average line. As I said in the weekend update, the Bounce strength has been decreased. The second impulse daily down move is in progress. Today has the potential to be a strong declining day in the market.

ESU7 DAILY Chart



6. TRADING STRATEGY FOR Sept. 11, 2007

Yesterday's high 1464.75 could be the TOP of the next big declining move. As long as ES doesn't breakout 1464.75, short term trend remains on the downside. Breakdown 1440.25 level, ES should go down further to 1418 direction to search for support.

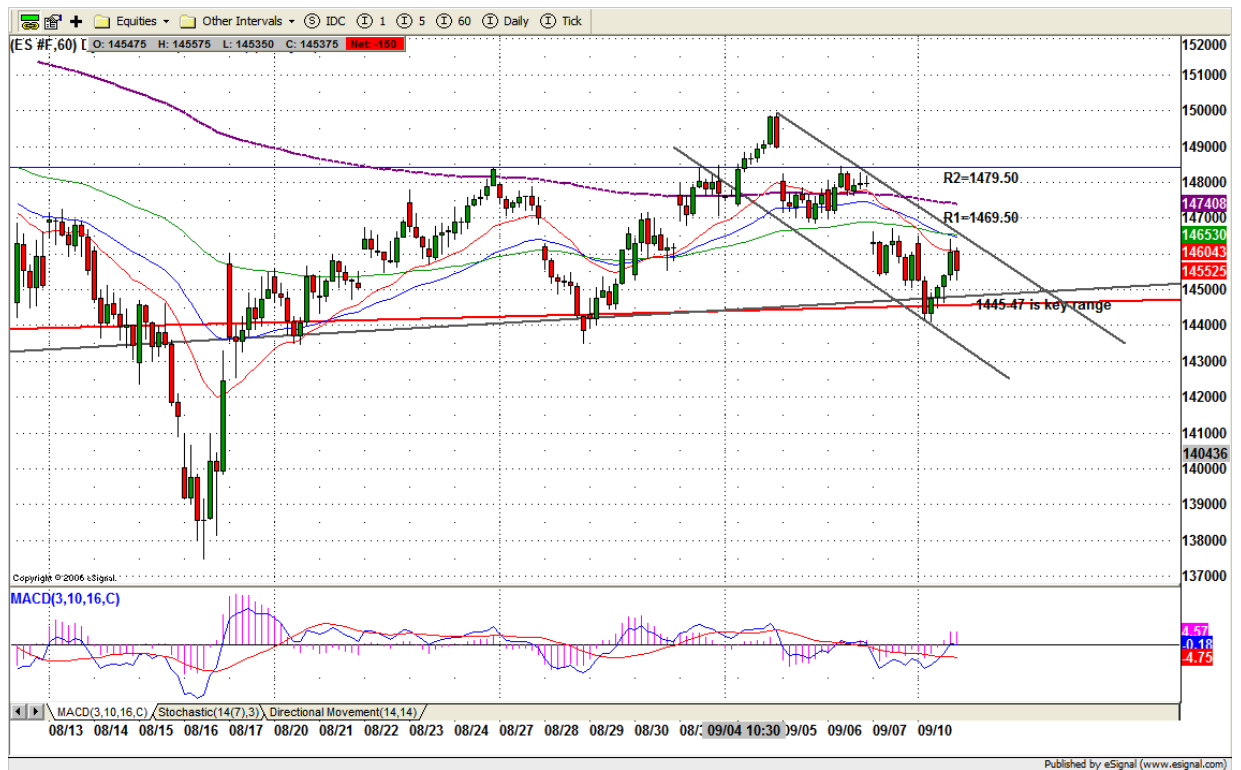
Intraday swing position entry on short side:

1464.75(Scalping) 1469.75 (agg) and 1479.50 (cons)

Intraday swing position entry on long side:

1440.25 (scalping) 1431.25-29 (agg) and 1418.25 (cons)

ESU7 INTRADAY



7. PREDICTION FOR TODAY'S MOVEMENT

Current (interval=3.90)

1476.56	+2/8
1472.66	+1/8
1468.75	8/8
1464.84	7/8
1460.94	6/8
1457.03	5/8
1453.13	4/8
1449.22	3/8
1445.31	2/8
1441.41	1/8
1437.50	0/8
1433.59	-1/8
1429.69	-2/8

Up (Interval=3.90)

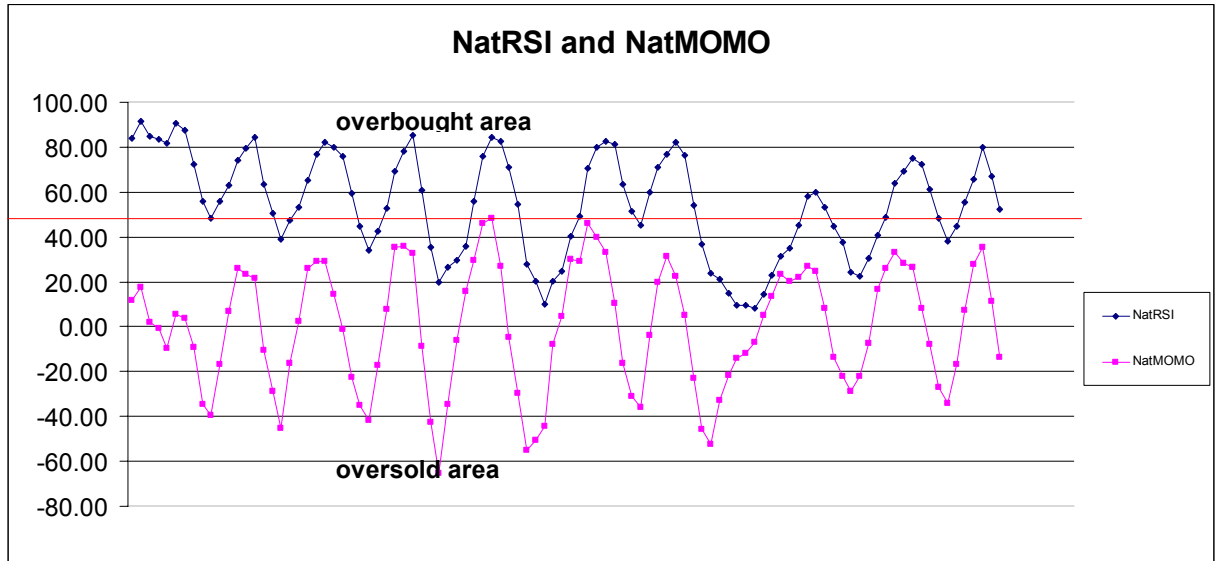
1492.19	+2/8
1488.28	+1/8
1484.38	8/8
1480.47	7/8
1476.56	6/8
1472.66	5/8
1468.75	4/8
1464.84	3/8
1460.94	2/8
1457.03	1/8
1453.13	0/8
1449.22	-1/8
1445.31	-2/8

Down (Interval=3.90)

1476.56	+2/8
1472.66	+1/8
1468.75	8/8
1464.84	7/8
1460.94	6/8
1457.03	5/8
1453.13	4/8
1449.22	3/8
1445.31	2/8
1441.41	1/8
1437.50	0/8
1433.59	-1/8
1429.69	-2/8

8. OTHER INDICATORS

NatRSI (1day)	NatRSI (5day)	NatMoMo	ATR 10	Waist number
0.34	0.52	-13.41	20.03	1459.13
neutral	neutral			



9. WEEKLY ECONOMIC REPORTS (<http://www.tradethenews.com/weekly-calendar.php>)

Date	ET	Release	For	Actual	Briefing.com	Consensus	Prior
Sep 11	08:30	Trade Balance	Jul		-\$58.0	-\$59.0B	-\$58.1B
Sep 12	10:30	Crude Inventories	09/07		NA	NA	-3972K
Sep 13	08:30	Initial Claims	09/08		325K	330K	318K
Sep 13	14:00	Treasury Budget	Aug		-\$100.0B	-\$85.0B	-\$64.7B
Sep 14	08:30	Current Account	Q2		-\$192.0B	-\$190.0B	-\$192.6B
Sep 14	08:30	Export Prices ex-ag.	Aug		NA	NA	0.0%
Sep 14	08:30	Import Prices ex-oil	Aug		NA	NA	0.2%
Sep 14	08:30	Retail Sales	Aug		0.6%	0.5%	0.3%
Sep 14	08:30	Retail Sales ex-auto	Aug		0.0%	0.2%	0.4%
Sep 14	09:15	Industrial Production	Aug		0.4%	0.3%	0.3%
Sep 14	09:15	Capacity Utilization	Aug		82.1%	82.0%	81.9%
Sep 14	10:00	Business Inventories	Jul		0.3%	0.3%	0.4%
Sep 14	10:00	Mich Sentiment-Prel.	Sep		83.0	83.5	83.4