



Daily trading plan for Sept. 7, 2007

1. ESU7 IN PREVIOUS DAY

Open	High	Low	Closing
1477.75	1484.50	1469.50	1479.50

2. PIVOTS FOR ESU7

	Daily	Weekly	Monthly	Yearly
R3	1501.17	1546.08	1669.33	1722.00
R2	1492.83	1515.42	1589.92	1583.50
R1	1486.17	1496.08	1533.33	1506.00
PPT	1477.83	1465.42	1453.92	1367.50
S1	1471.17	1446.08	1397.33	1290.00
S2	1462.83	1415.42	1317.92	1151.50
S3	1456.17	1396.08	1261.33	1074.00

3. FOCUS NUMBERS (intra-day Position trading)

Sell levels	Buying levels
1489.25 (Sell#)	1461.25(first Buy#)
1496.25-99.25 (Second Sell#)	1454.25 (second Buy#)

4. MAJOR RESISTANCE AND SUPPORT LEVELS FOR TODAY

Resistance	1486.25	1493.25	1496.25	1501.25	1507.25
Support	1465.25	1461.25	1454.25	1446.25	1442.75

5. DAILY OUTLOOK

Recently the market seems to be getting confused by economic reports. For a rate cut, the market needs bad economic reports, but most were good. That indicates Fed may not cut the rate. Therefore, we may see ES handing there and choppy along those moving average lines until Sept. 18.

Currently daily indicators of ES are overbought. We may see a little pullback move. Mainly ES holding up around currently level should be expected.

ESU7 DAILY Chart



6. TRADING STRATEGY FOR Sept. 7, 2007

ES continued doing its consolidation - contraction mode. Today we still expect expansion may occur after the important unemployment report in the morning.

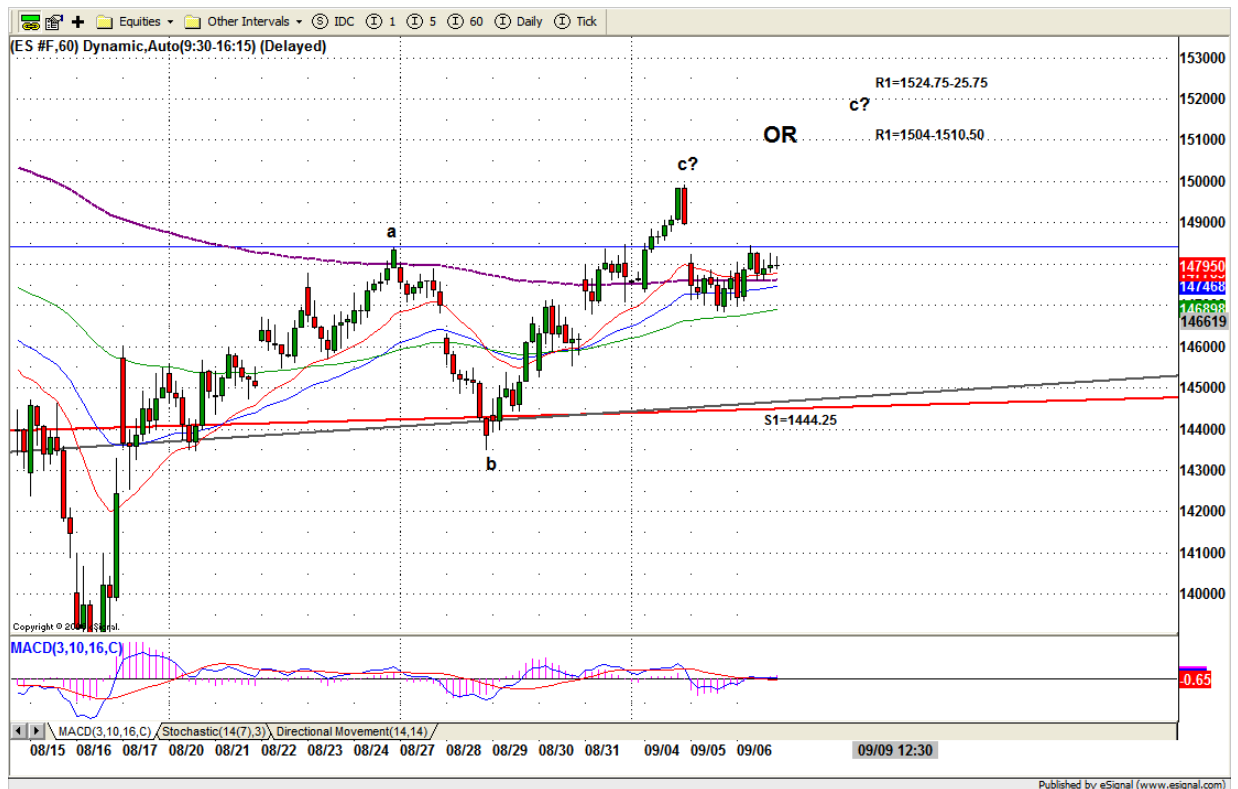
If in the morning ES breaks out 1485 level, we are likely to see 1489.50 level for yesterday's gap filled. Later if ES can hold price above 1485 level, it is likely to see ES go to 1496-99 or higher for closing.

If instead of breakout 1485, ES breaks down 1468.25, we could see price dip into 1461.25 to fill last Friday's gap. Later if ES can hold price below 1468, ES could go down further to 1454 level to retest 200 day moving average line.

Nevertheless 1485.75 is key level for upside move and 1467.75 is key level for downside move.

Intraday swing position entry on short side:
1489.75(Scalping) 1498.75 (agg) and 1506.50 (cons)
Intraday swing position entry on long side:
1461.25 (scalping) 1454.25 (agg) and 1449.25 (cons)

ESU7 INTRADAY



7. PREDICTION FOR TODAY'S MOVEMENT

Current (interval=1.95)

1488.28	+2/8
1486.33	+1/8
1484.38	8/8
1482.42	7/8
1480.47	6/8
1478.52	5/8
1476.56	4/8
1474.61	3/8
1472.66	2/8
1470.70	1/8
1468.75	0/8
1466.80	-1/8
1464.84	-2/8

Up (Interval=3.90)

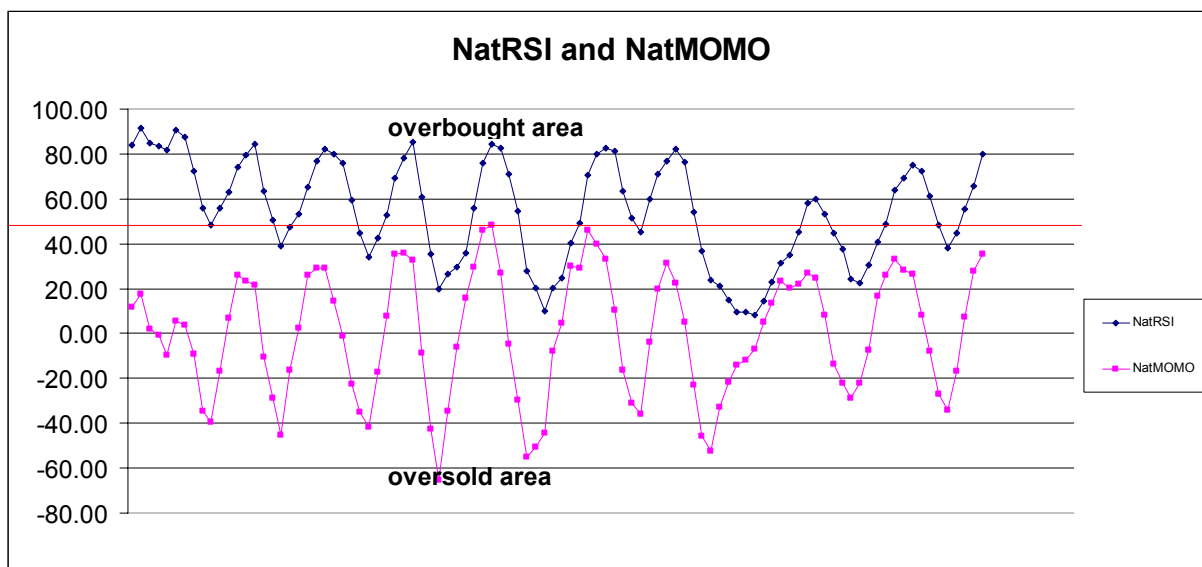
1507.81	+2/8
1503.91	+1/8
1500.00	8/8
1496.09	7/8
1492.19	6/8
1488.28	5/8
1484.38	4/8
1480.47	3/8
1476.56	2/8
1472.66	1/8
1468.75	0/8
1464.84	-1/8
1460.94	-2/8

Down (Interval=3.90)

1492.19	+2/8
1488.28	+1/8
1484.38	8/8
1480.47	7/8
1476.56	6/8
1472.66	5/8
1468.75	4/8
1464.84	3/8
1460.94	2/8
1457.03	1/8
1453.13	0/8
1449.22	-1/8
1445.31	-2/8

8. OTHER INDICATORS

NatRSI (1day)	NatRSI (5day)	NatMoMo	ATR 10	Waist number
0.56	0.80	35.38	20.03	1478.75
neutral	overbought			



9. WEEKLY ECONOMIC REPORTS (<http://www.tradethenews.com/weekly-calendar.php>)

Date	ET	Release	For	Actual	Briefing.com	Consensus	Prior
Sep 07	08:30	Nonfarm Payrolls	Aug		130K	120K	92K
Sep 07	08:30	Unemployment Rate	Aug		4.7%	4.6%	4.6%
Sep 07	08:30	Hourly Earnings	Aug		0.3%	0.3%	0.3%
Sep 07	08:30	Average Workweek	Aug		33.8	33.8	33.8
Sep 07	10:00	Wholesale Inventories	Jul		0.5%	0.5%	0.5%