



## Daily trading plan for Sept. 6, 2007

### 1. ESU7 IN PREVIOUS DAY

Open	High	Low	Closing
1480.50	1482.25	1468.25	1476.50

### 2. PIVOTS FOR ESU7

	Daily	Weekly	Monthly	Yearly
R3	1497.08	1546.08	1669.33	1722.00
R2	1489.67	1515.42	1589.92	1583.50
R1	1483.03	1496.08	1533.33	1506.00
<b>PPT</b>	<b>1457.67</b>	<b>1465.42</b>	<b>1453.92</b>	<b>1367.50</b>
S1	1469.08	1446.08	1397.33	1290.00
S2	1461.67	1415.42	1317.92	1151.50
S3	1455.08	1396.08	1261.33	1074.00

### 3. FOCUS NUMBERS (intra-day Position trading)

Sell levels	Buying levels
1489.25 (Sell#)	1463.25- 61.25(first Buy#)
1495.50-96.25 (Second Sell#)	1455.25-54.25 (second Buy#)

### 4. MAJOR RESISTANCE AND SUPPORT LEVELS FOR TODAY

<b>Resistance</b>	1483.25	1489.25	1493.75	1496.75	1499.25
<b>Support</b>	1467.00	1461.75	1454.00	1445.50	1449.00

## 5. DAILY OUTLOOK

Yesterday ES gapped down at open and closed below the open. Is this a CIT day low or did we see a CIT day high? Today ES movement can give us a clear answer.

If ES breaks out yesterday's high, it is likely that yesterday's low is the CIT low, and ES hasn't completed its C movement yet. In that case we still have a chance to see 1504 in the coming days. But if ES breaks down yesterday's low, it could indicate another decline to the low 1455-1444 range is on the way.

Daily SST indicates ES has an overbought condition. ES struggles to hold above 20 day moving average, which could make for a very choppy and nasty move today.

### ESU7 DAILY Chart



## 6. TRADING STRATEGY FOR Sept. 6, 2007

ES made a narrow range day seven (NR7). Today daily range breakout move should be expected.

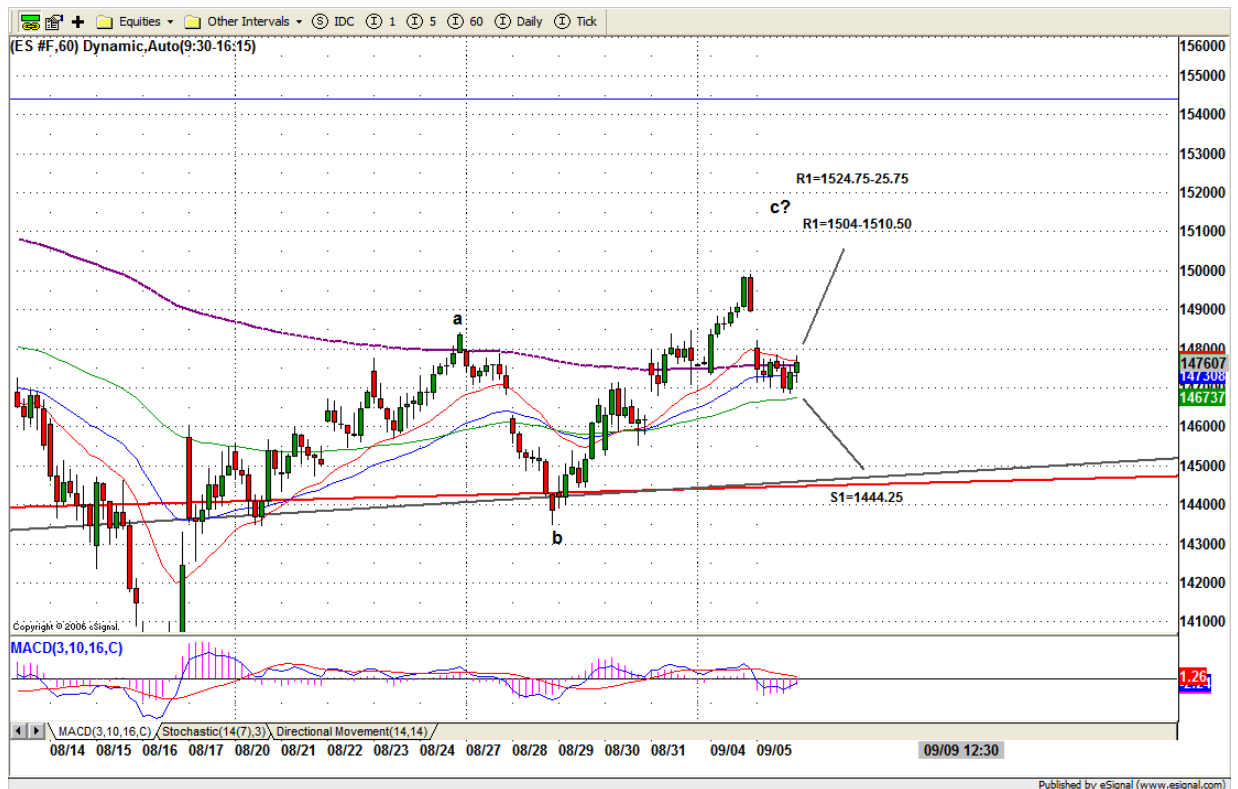
If in the morning ES breaks out 1482.75 level, we are likely to see 1489.50 level for yesterday's gap filled. Later if ES can hold price above 1483-85 range, it is likely to see ES go higher to 1495-96.

If instead of breakout 1482.75, ES breaks down 1468.25, we could see price dip into 1461.25 to fill last Friday's gap. Later if ES can hold price below 1468, ES could go down further to 1455 level to retest 200 day moving average line.

Yesterday's range is equilibrium range. ES can breakout either direction and reverse fast again.

**Intraday swing position entry on short side:**  
**1489.75(Scalping) 1496.75 (agg) and 1504.50 (cons)**  
**Intraday swing position entry on long side:**  
**1461.25 (scalping) 1454.25 (agg) and 1449.25 (cons)**

## ESU7 INTRADAY



## 7. PREDICTION FOR TODAY'S MOVEMENT

### Current (interval=1.95)

1488.28	+2/8
1486.33	+1/8
1484.38	8/8
1482.42	7/8
1480.47	6/8
1478.52	5/8
1476.56	4/8
1474.61	3/8
1472.66	2/8
1470.70	1/8
1468.75	0/8
1466.80	-1/8
1464.84	-2/8

### Up (Interval=3.90)

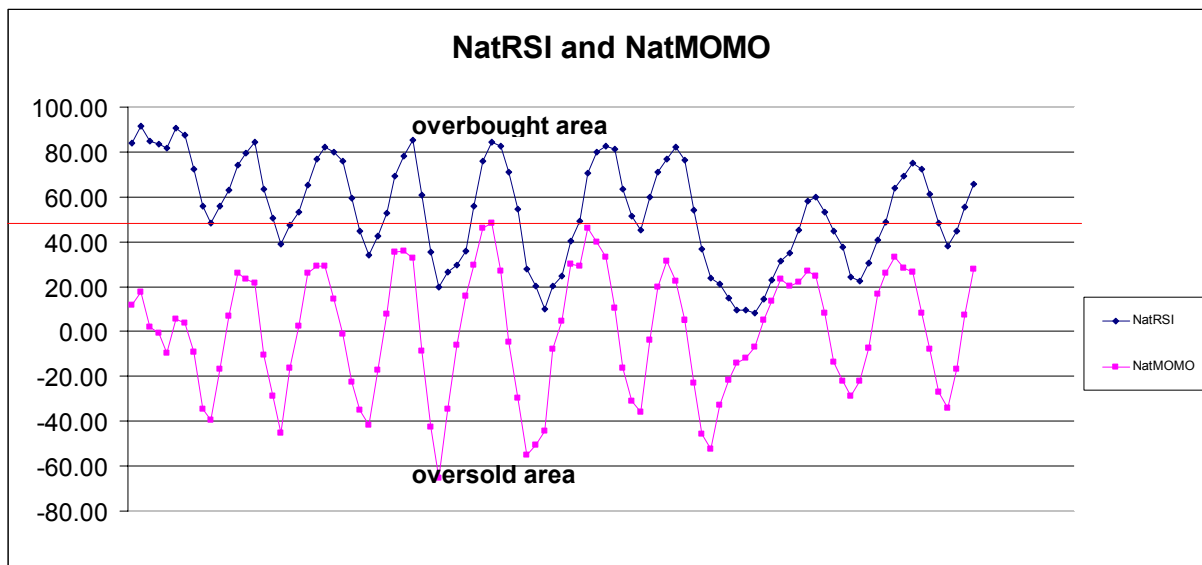
1507.81	+2/8
1503.91	+1/8
1500.00	8/8
1496.09	7/8
1492.19	6/8
1488.28	5/8
1484.38	4/8
1480.47	3/8
1476.56	2/8
1472.66	1/8
1468.75	0/8
1464.84	-1/8
1460.94	-2/8

### Down (Interval=3.90)

1492.19	+2/8
1488.28	+1/8
1484.38	8/8
1480.47	7/8
1476.56	6/8
1472.66	5/8
1468.75	4/8
1464.84	3/8
1460.94	2/8
1457.03	1/8
1453.13	0/8
1449.22	-1/8
1445.31	-2/8

## 8. OTHER INDICATORS

NatRSI (1day)	NatRSI (5day)	NatMoMo	ATR 10	Waist number
0.36	0.65	28.00	20.03	1478.50
oversold	neutral			



## 9. WEEKLY ECONOMIC REPORTS (<http://www.tradethenews.com/weekly-calendar.php>)

Date	ET	Release	For	Actual	Briefing.com	Consensus	Prior
Sep 06	08:30	<a href="#">Initial Claims</a>	09/01		320K	NA	334K
Sep 06	08:30	<a href="#">Productivity-Rev.</a>	Q2		2.5%	2.3%	1.8%
Sep 06	10:00	<a href="#">ISM Services</a>	Aug		NA	54.5	55.8
Sep 07	08:30	<a href="#">Nonfarm Payrolls</a>	Aug		130K	120K	92K
Sep 07	08:30	<a href="#">Unemployment Rate</a>	Aug		4.7%	4.6%	4.6%
Sep 07	08:30	<a href="#">Hourly Earnings</a>	Aug		0.3%	0.3%	0.3%
Sep 07	08:30	<a href="#">Average Workweek</a>	Aug		33.8	33.8	33.8
Sep 07	10:00	<a href="#">Wholesale Inventories</a>	Jul		0.5%	0.5%	0.5%