



Daily trading plan for Aug. 29, 2007

1. ESU7 IN PREVIOUS DAY

Open	High	Low	Closing
1462.00	1463.00	1434.75	1438.25

2. PIVOTS FOR ESU7

	Daily	Weekly	Monthly	Yearly
R3	1484.17	1549.69	1643.42	1722.00
R2	1473.58	1516.83	1604.83	1583.50
R1	1455.92	1500.17	1533.42	1506.00
PPT	1445.33	1467.33	1494.83	1367.50
S1	1427.67	1450.67	1423.42	1290.00
S2	1417.08	1417.83	1384.83	1151.50
S3	1399.42	1401.17	1313.42	1074.00

3. FOCUS NUMBERS (intra-day Position trading)

Sell levels	Buying levels
1445.25-1448.50 (Sell#)	1425.25-24.75 (first Buy#)
1458.25-1459.50(Second Sell#)	1418.25-17.25 (second Buy#)

4. MAJOR RESISTANCE AND SUPPORT LEVELS FOR TODAY

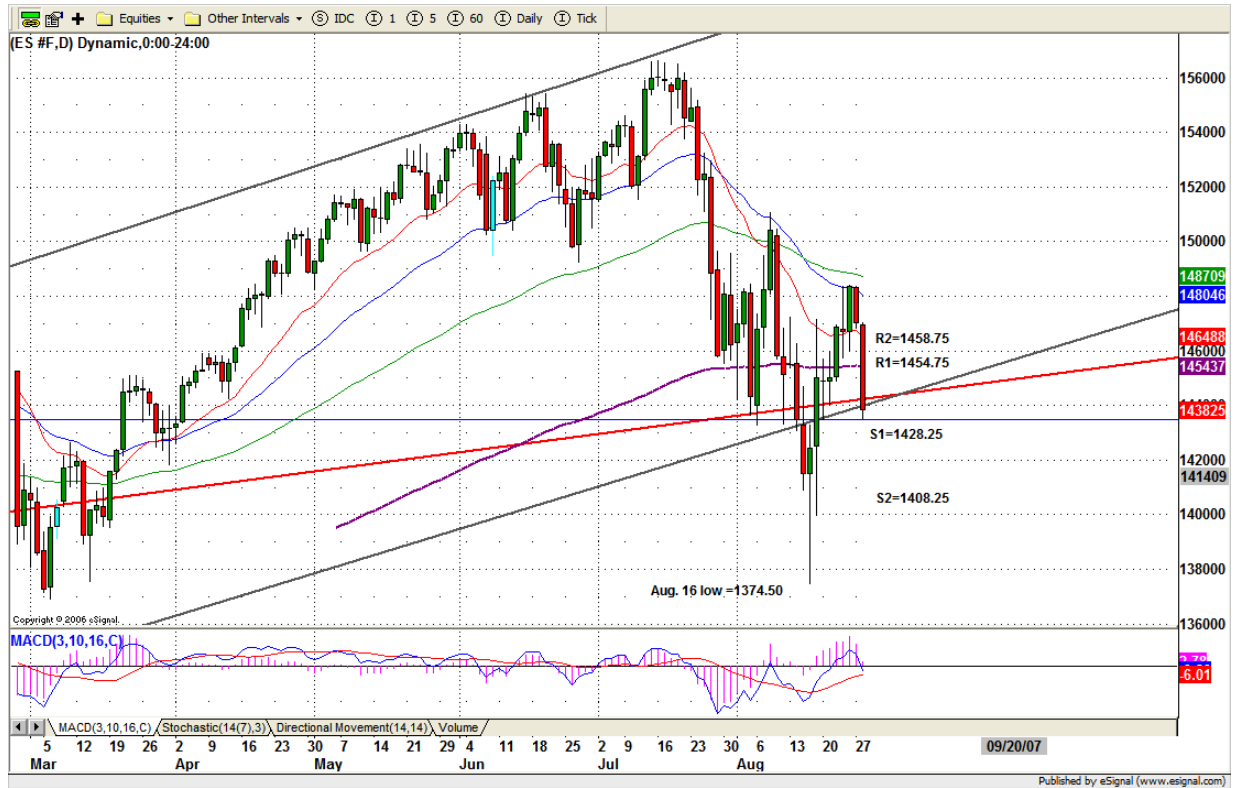
Resistance	1445.50	1450.50	1460.75	1467.50	1473.50
Support	1425.25	1423.25	1418.00	1412.00	1506.75

5. DAILY OUTLOOK

Our market lost its confidence. Fed statement fueled more selling. This morning we may see ES consolidates for a little while if 1436.50 level can be held; if it fails to hold, expect continuing slide to 1429-28 area.

Market is in very bearish mood. Any bounce attracts sellers.

ESU7 DAILY Chart



6. TRADING STRATEGY FOR Aug. 29, 2007

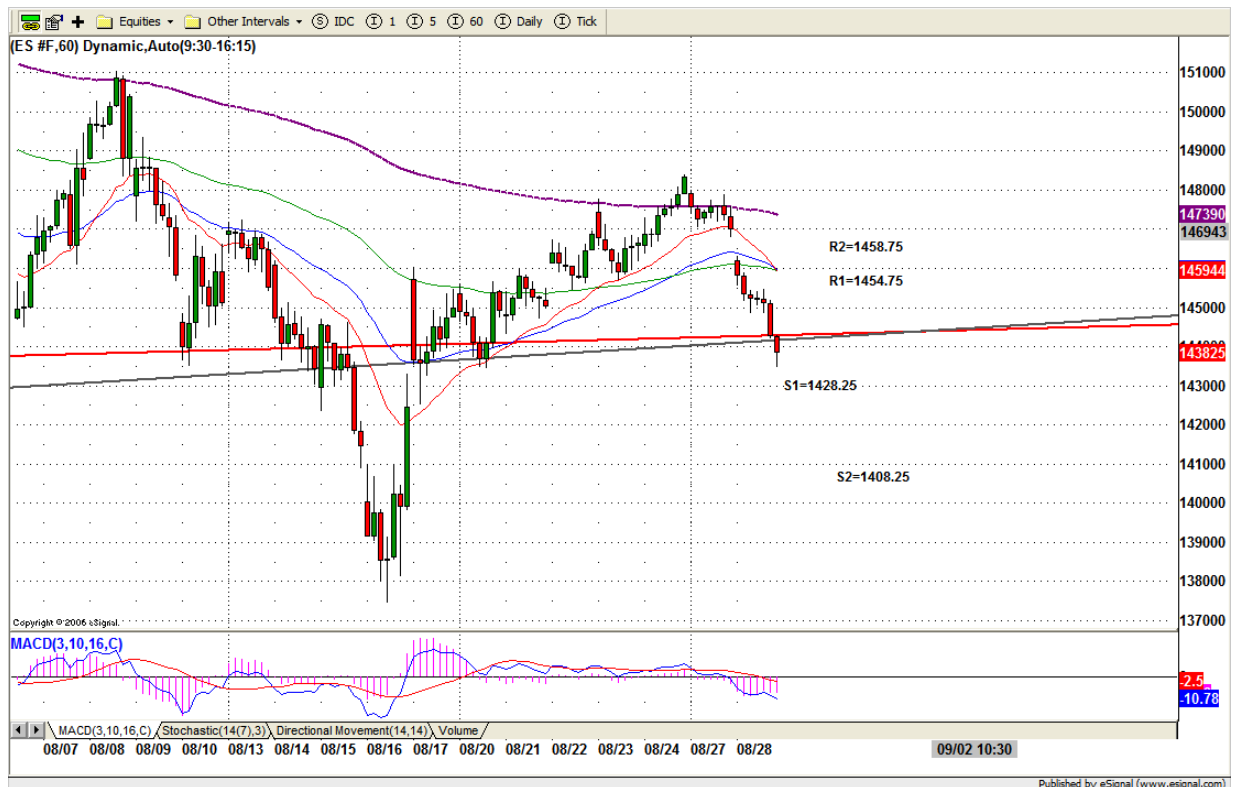
Yesterday ES completed its daily range breakdown pattern, but was unable to bounce back up from it. Price has been pulled back into long term uptrend channel again. Today if ES can follow through on yesterday's move, it is then likely for ES to go lower in coming months.

Early morning, ES may go sideways for consolidation. If it breaks out its first hour range, the rest of the day could be the same as breakout direction.

Holiday is coming, we may see ES reverses in later afternoon if early morning price continues going down.

Intraday swing position entry on short side:
1445.75 (Scalping) 1454.75 (agg) and 1458.50 (cons)
Intraday swing position entry on long side:
1425.25 (agg) and 1408.25 (cons)

ESU7 INTRADAY



7. PREDICTION FOR TODAY'S MOVEMENT

Current (interval=3.90)

1476.56	+2/8
1472.66	+1/8
1468.75	8/8
1464.84	7/8
1460.94	6/8
1457.03	5/8
1453.13	4/8
1449.22	3/8
1445.31	2/8
1441.41	1/8
1437.50	0/8
1433.59	-1/8
1429.69	-2/8

Up (Interval=3.90)

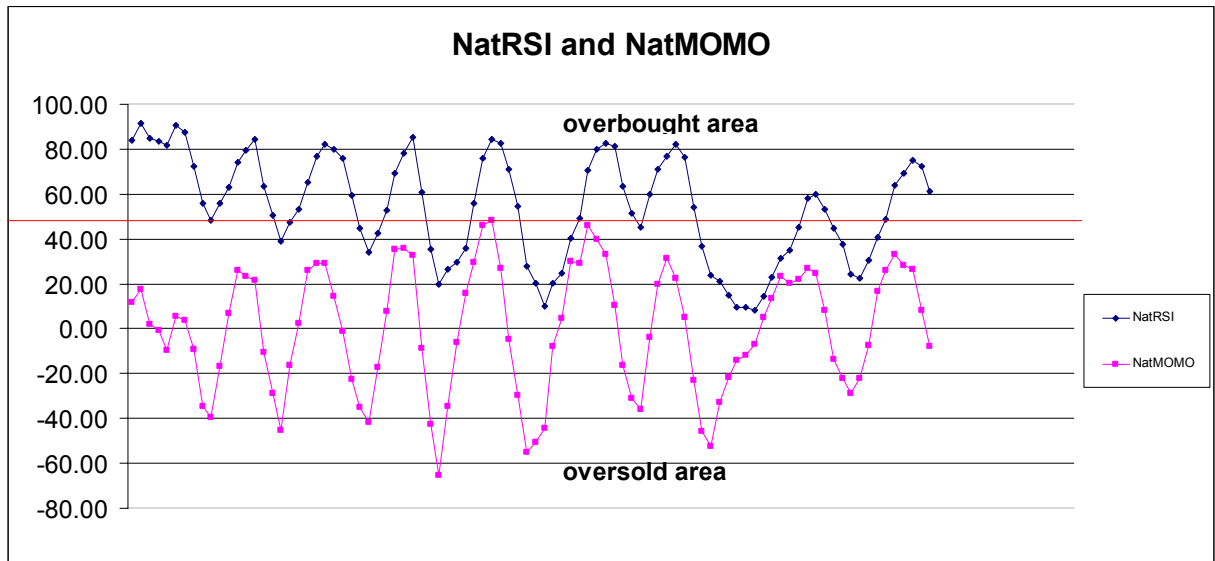
1476.56	+2/8
1472.66	+1/8
1468.75	8/8
1464.84	7/8
1460.94	6/8
1457.03	5/8
1453.13	4/8
1449.22	3/8
1445.31	2/8
1441.41	1/8
1437.50	0/8
1433.59	-1/8
1429.69	-2/8

Down (Interval=3.90)

1460.94	+2/8
1457.03	+1/8
1453.13	8/8
1449.22	7/8
1445.31	6/8
1441.41	5/8
1437.50	4/8
1433.59	3/8
1429.69	2/8
1425.78	1/8
1421.88	0/8
1417.97	-1/8
1414.06	-2/8

8. OTHER INDICATORS

NatRSI (1day)	NatRSI (5day)	NatMoMo	ATR 10	Waist number
0.08	0.61	-7.74	26.65	1438.25
oversold	neutral			



9. WEEKLY ECONOMIC REPORTS (<http://www.tradethenews.com/weekly-calendar.php>)

Date	ET	Release	For	Actual	Briefing.co m	Consensus	Prior
Aug 29	10:30	Crude Inventories	08/24		NA	NA	1890K
Aug 30	08:30	GDP-Prel.	Q2		4.0%	4.1%	3.4%
Aug 30	08:30	Chain Deflator-Prel.	Q2		2.7%	2.7%	2.7%
Aug 30	08:30	Initial Claims	08/25		320K	320K	322K
Aug 30	10:00	Help-Wanted Index	Jul		25	25	26
Aug 31	08:30	Personal Income	Jul		0.4%	0.3%	0.4%
Aug 31	08:30	Personal Spending	Jul		0.4%	0.4%	0.1%
Aug 31	08:30	Core PCE Inflation	Jul		0.1%	0.2%	0.1%
Aug 31	09:45	Chicago PMI	Aug		56.0	53.0	53.4
Aug 31	10:00	Factory Orders	Jul		3.9%	0.9%	0.6%
Aug 31	10:00	Mich Sentiment-Rev.	Aug		83.3	83.0	83.3