



Daily trading plan for Aug. 28, 2007

1. ESU7 IN PREVIOUS DAY

Open	High	Low	Closing
1479.25	1480.00	1468.00	1469.75

2. PIVOTS FOR ESU7

	Daily	Weekly	Monthly	Yearly
R3	1489.17	1549.69	1643.42	1722.00
R2	1484.58	1516.83	1604.83	1583.50
R1	1477.17	1500.17	1533.42	1506.00
PPT	1472.58	1467.33	1494.83	1367.50
S1	1465.17	1450.67	1423.42	1290.00
S2	1460.38	1417.83	1384.83	1151.50
S3	1458.17	1401.17	1313.42	1074.00

3. FOCUS NUMBERS (intra-day Position trading)

Sell levels	Buying levels
1485.50-87.25 (Sell#)	1462-60.75 (first Buy#)
1493.75(Second Sell#)	1452.25 (second Buy#)

4. MAJOR RESISTANCE AND SUPPORT LEVELS FOR TODAY

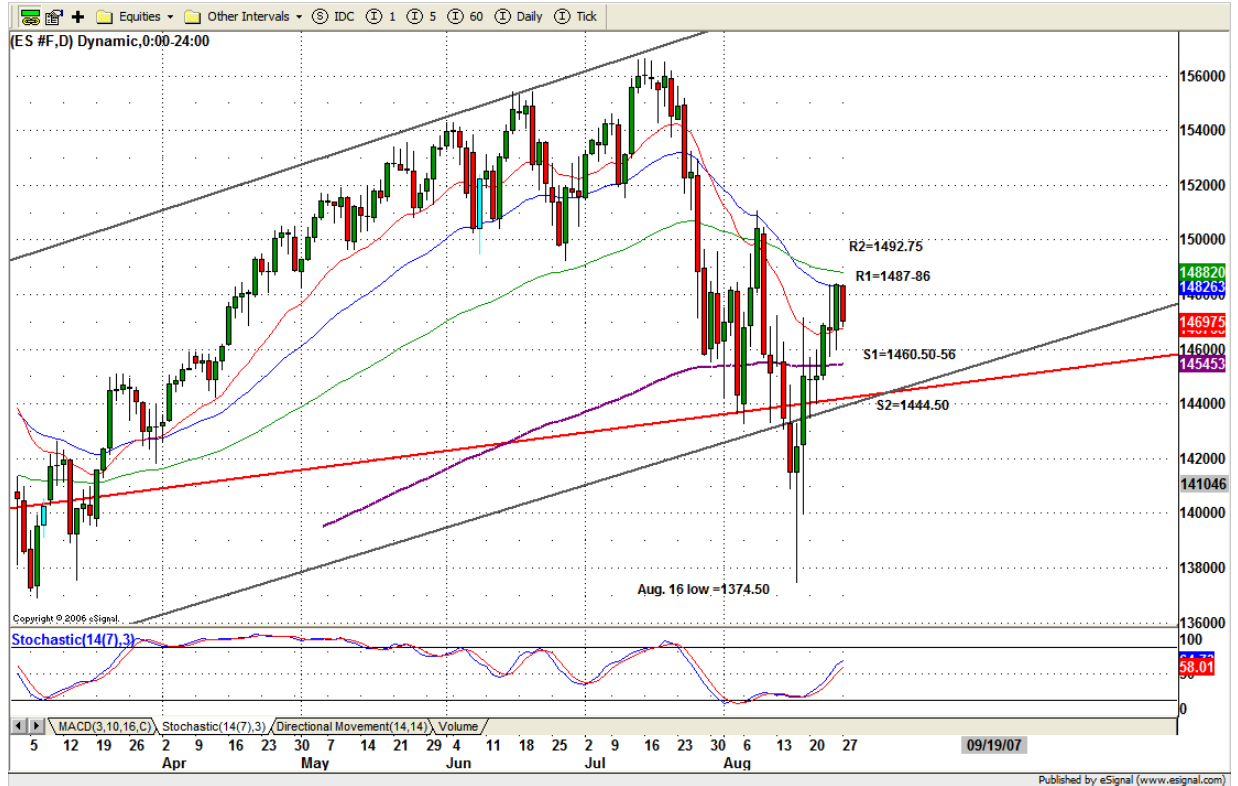
Resistance	1479.25	1489.75	1494.75	1500.25	1507.75
Support	1467.00	1464.00	1458.25	1450.75	1448.25

5. DAILY OUTLOOK

Upside move appears near the end. The next impulse downside move could lead the price lower if ES fails to hold above 1430.

Yesterday afternoon, ES failed to confirm DOW emini's afternoon high, creating a short-term inter-market bearish divergence. Today 1465 is key level. If ES fails to hold this level, reversal to the downside should be expected.

ESU7 DAILY Chart



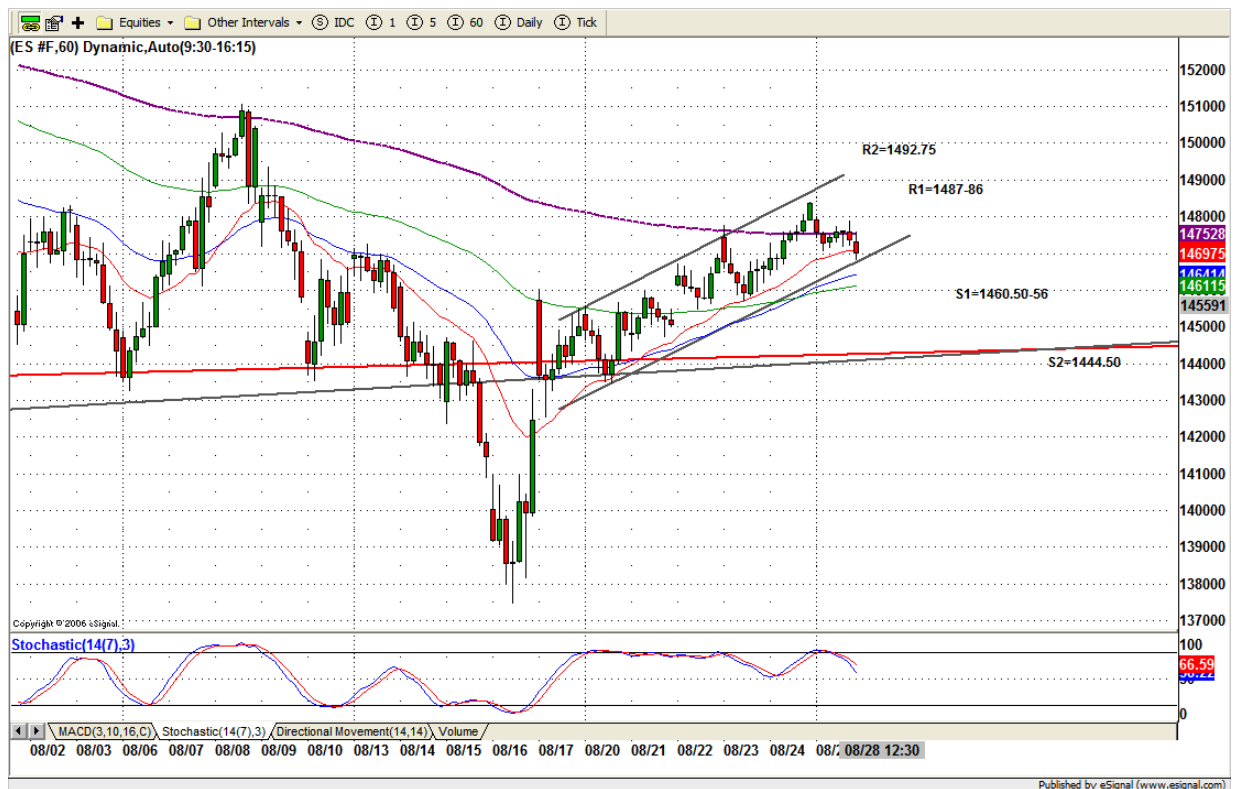
6. TRADING STRATEGY FOR Aug. 28, 2007

Yesterday ES made an inside day with a relatively small range. (NR7). Today daily range breakout move may happen if the morning consumer confidence report is not good. Breakdown 1465 level will confirm daily range breakdown, and then downside MOMO will push price down to 1460-56 range to complete that pattern. At the meantime, if ES can breakout 1480 level, upside MOMO will push price up to 1486-87 range.

Due to holiday week, light volume creates choppy moves. But short-term major trend still remains on the downside.

Intraday swing position entry on short side:
1478.75 (Scalping) 1485.75-87.25 (agg) and 1492.50 (cons)
Intraday swing position entry on long side:
1460.25 (agg) and 1449.25 (cons)

ESU7 INTRADAY



7. PREDICTION FOR TODAY'S MOVEMENT

Current (interval=1.95)

1488.28	+2/8
1486.33	+1/8
1484.38	8/8
1482.42	7/8
1480.47	6/8
1478.52	5/8
1476.56	4/8
1474.61	3/8
1472.66	2/8
1470.70	1/8
1468.75	0/8
1466.80	-1/8
1464.84	-2/8

Up (Interval=3.90)

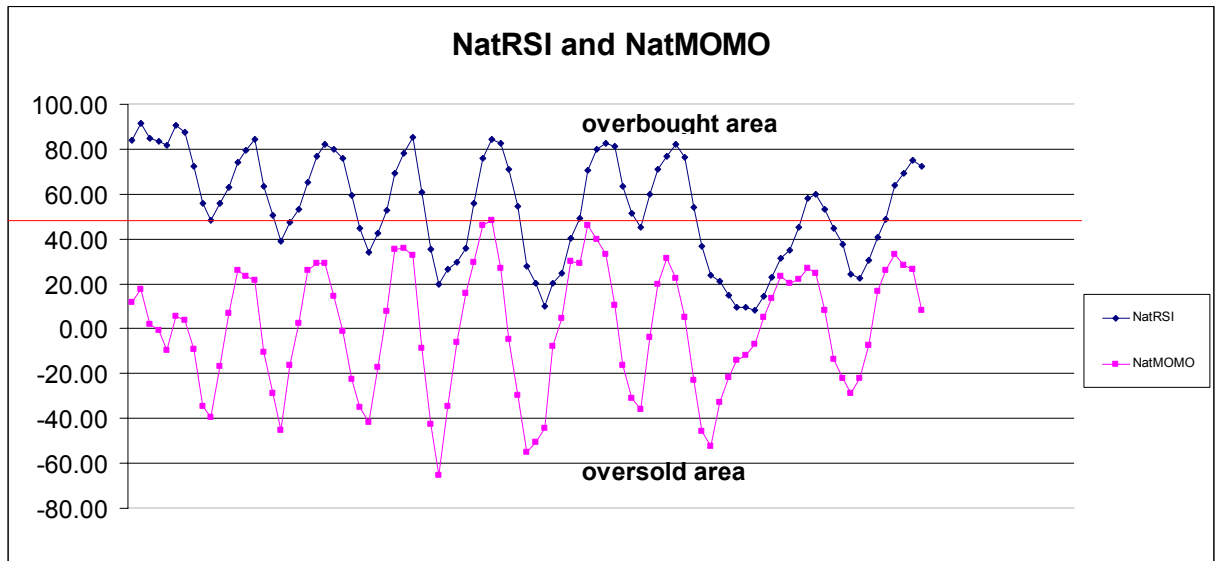
1507.81	+2/8
1503.91	+1/8
1500.00	8/8
1496.09	7/8
1492.19	6/8
1488.28	5/8
1484.38	4/8
1480.47	3/8
1476.56	2/8
1472.66	1/8
1468.75	0/8
1464.84	-1/8
1460.94	-2/8

Down (Interval=3.90)

1492.19	+2/8
1488.28	+1/8
1484.38	8/8
1480.47	7/8
1476.56	6/8
1472.66	5/8
1468.75	4/8
1464.84	3/8
1460.94	2/8
1457.03	1/8
1453.13	0/8
1449.22	-1/8
1445.31	-2/8

8. OTHER INDICATORS

NatRSI (1day)	NatRSI (5day)	NatMoMo	ATR 10	Waist number
0.10	0.72	8.37	27.00	1474.50
oversold	neutral			



9. WEEKLY ECONOMIC REPORTS (<http://www.tradethenews.com/weekly-calendar.php>)

Date	ET	Release	For	Actual	Briefing.co m	Consensus	Prior
Aug 28	10:00	Consumer Confidence	Aug		104.0	105.0	112.6
Aug 28	14:00	FOMC Minutes	Aug 7				
Aug 29	10:30	Crude Inventories	08/24		NA	NA	1890K
Aug 30	08:30	GDP-Prel.	Q2		4.0%	4.1%	3.4%
Aug 30	08:30	Chain Deflator-Prel.	Q2		2.7%	2.7%	2.7%
Aug 30	08:30	Initial Claims	08/25		320K	320K	322K
Aug 30	10:00	Help-Wanted Index	Jul		25	25	26
Aug 31	08:30	Personal Income	Jul		0.4%	0.3%	0.4%
Aug 31	08:30	Personal Spending	Jul		0.4%	0.4%	0.1%
Aug 31	08:30	Core PCE Inflation	Jul		0.1%	0.2%	0.1%
Aug 31	09:45	Chicago PMI	Aug		56.0	53.0	53.4
Aug 31	10:00	Factory Orders	Jul		3.9%	0.9%	0.6%
Aug 31	10:00	Mich Sentiment-Rev.	Aug		83.3	83.0	83.3