



Daily trading plan for Aug. 24, 2007

1. ESU7 IN PREVIOUS DAY

Open	High	Low	Closing
1474.25	1477.50	1457.00	1466.50

2. PIVOTS FOR ESU7

	Daily	Weekly	Monthly	Yearly
R3	1497.50	1588.17	1643.42	1722.00
R2	1487.50	1530.33	1604.83	1583.50
R1	1477.00	1490.17	1533.42	1506.00
PPT	1467.00	1432.33	1494.83	1367.50
S1	1456.50	1392.17	1423.42	1290.00
S2	1446.50	1334.33	1384.83	1151.50
S3	1436.00	1294.17	1313.42	1074.00

3. FOCUS NUMBERS (intra-day Position trading)

Sell levels	Buying levels
1475.00 (Sell#)	1460.25 (first Buy#)
1483.75(Second Sell#)	1449.25 (second Buy#)

4. MAJOR RESISTANCE AND SUPPORT LEVELS FOR TODAY

Resistance	1469.25	1481.75	1490.25	1495.75	1507.75
Support	1454.50	1442.25	1432.25	1427.75	1423.25

5. DAILY OUTLOOK

Upside almost runs of steam. Today we may see ES pulls back into 1453 area for closing. As long as ES doesn't breakout 1483-85 range, downside move should be expected.

ESU7 DAILY Chart

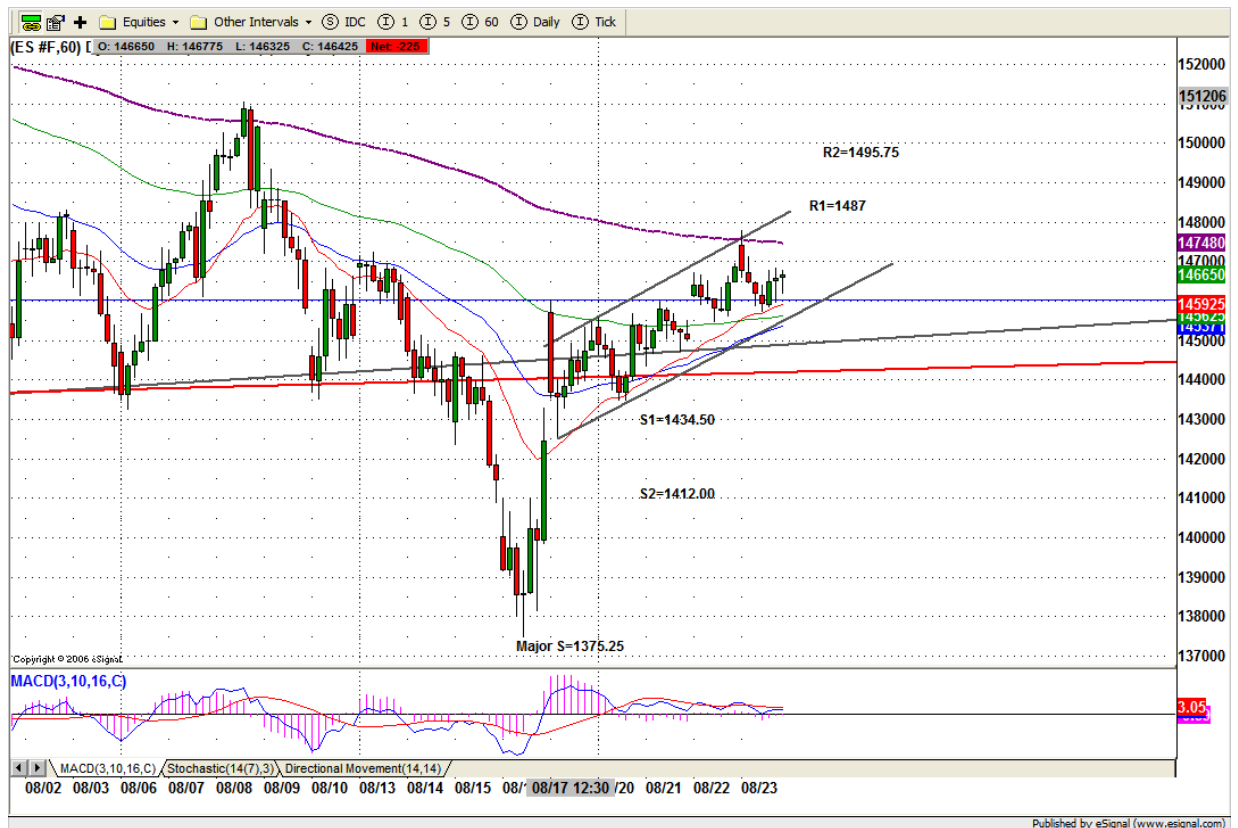


6. TRADING STRATEGY FOR Aug. 24, 2007

This morning, if ES goes up first to test yesterday's high 1475-77 range, scalping short first. If ES goes down first due to bad report at 8:30am, watch for 1450-48 gap fill area carefully. As long as 1450 level can be held up, scalping LONG for target 1458-59.

Intraday swing position entry on short side:
1474.75 (Scalping) 1483.75 (agg) and 1495.50 (cons)
Intraday swing position entry on long side:
1460.25 (scalping) 1449.25 (agg) and 1433.25 (cons)

ESU7 INTRADAY



7. PREDICTION FOR TODAY'S MOVEMENT

Current (interval=3.90)

1492.19	+2/8
1488.28	+1/8
1484.38	8/8
1480.47	7/8
1476.56	6/8
1472.66	5/8
1468.75	4/8
1464.84	3/8
1460.94	2/8
1457.03	1/8
1453.13	0/8
1449.22	-1/8
1445.31	-2/8

Up (Interval=3.90)

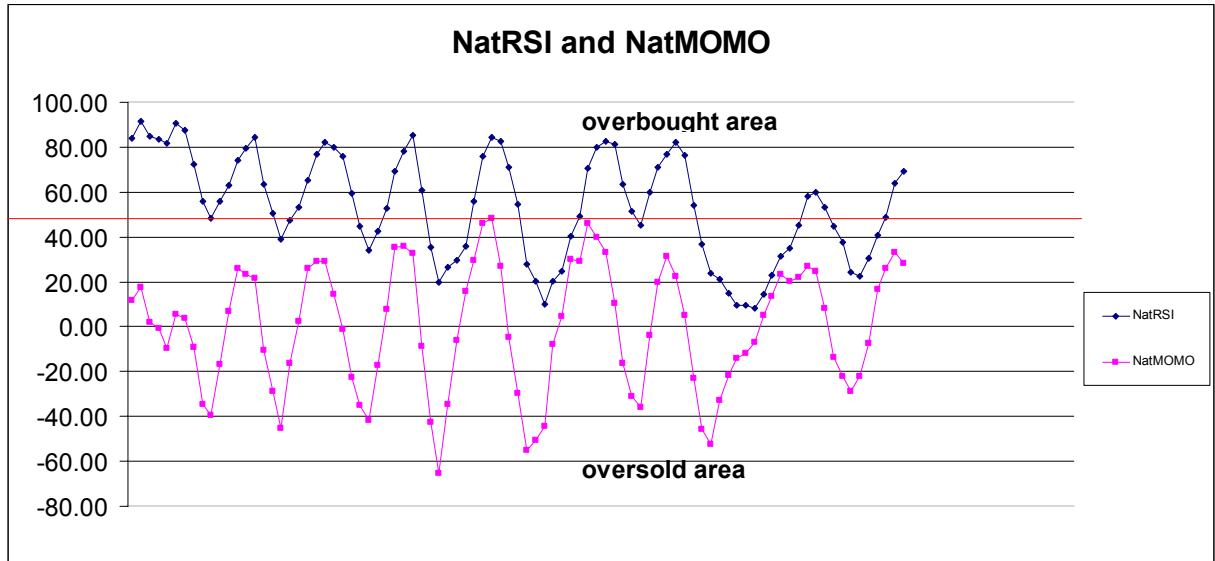
1492.19	+2/8
1488.28	+1/8
1484.38	8/8
1480.47	7/8
1476.56	6/8
1472.66	5/8
1468.75	4/8
1464.84	3/8
1460.94	2/8
1457.03	1/8
1453.13	0/8
1449.22	-1/8
1445.31	-2/8

Down (Interval=3.90)

1476.56	+2/8
1472.66	+1/8
1468.75	8/8
1464.84	7/8
1460.94	6/8
1457.03	5/8
1453.13	4/8
1449.22	3/8
1445.31	2/8
1441.41	1/8
1437.50	0/8
1433.59	-1/8
1429.69	-2/8

8. OTHER INDICATORS

NatRSI (1day)	NatRSI (5day)	NatMoMo	ATR 10	Waist number
0.31	0.69	28.23	29.18	1470.38
neutral	neutral			



9. WEEKLY ECONOMIC REPORTS (<http://www.tradethenews.com/weekly-calendar.php>)

Date	ET	Release	For	Actual	Briefing.com	Consensus	Prior
Aug 24	08:30	Durable Orders	Jul	NA		1.0%	1.4%
Aug 24	10:00	New Home Sales	Jul	NA		830K	834K