



Daily trading plan for Aug. 23, 2007

1. ESU7 IN PREVIOUS DAY

Open	High	Low	Closing
1461.25	1469.50	1454.50	1468.75

2. PIVOTS FOR ESU7

	Daily	Weekly	Monthly	Yearly
R3	1489.00	1588.17	1643.42	1722.00
R2	1479.25	1530.33	1604.83	1583.50
R1	1474.00	1490.17	1533.42	1506.00
PPT	1464.25	1432.33	1494.83	1367.50
S1	1459.00	1392.17	1423.42	1290.00
S2	1449.25	1334.33	1384.83	1151.50
S3	1444.00	1294.17	1313.42	1074.00

3. FOCUS NUMBERS (intra-day Position trading)

Sell levels	Buying levels
1486.75 (Sell#)	1460.50 (first Buy#)
1495.75(Second Sell#)	1450.25-51.75 (second Buy#)

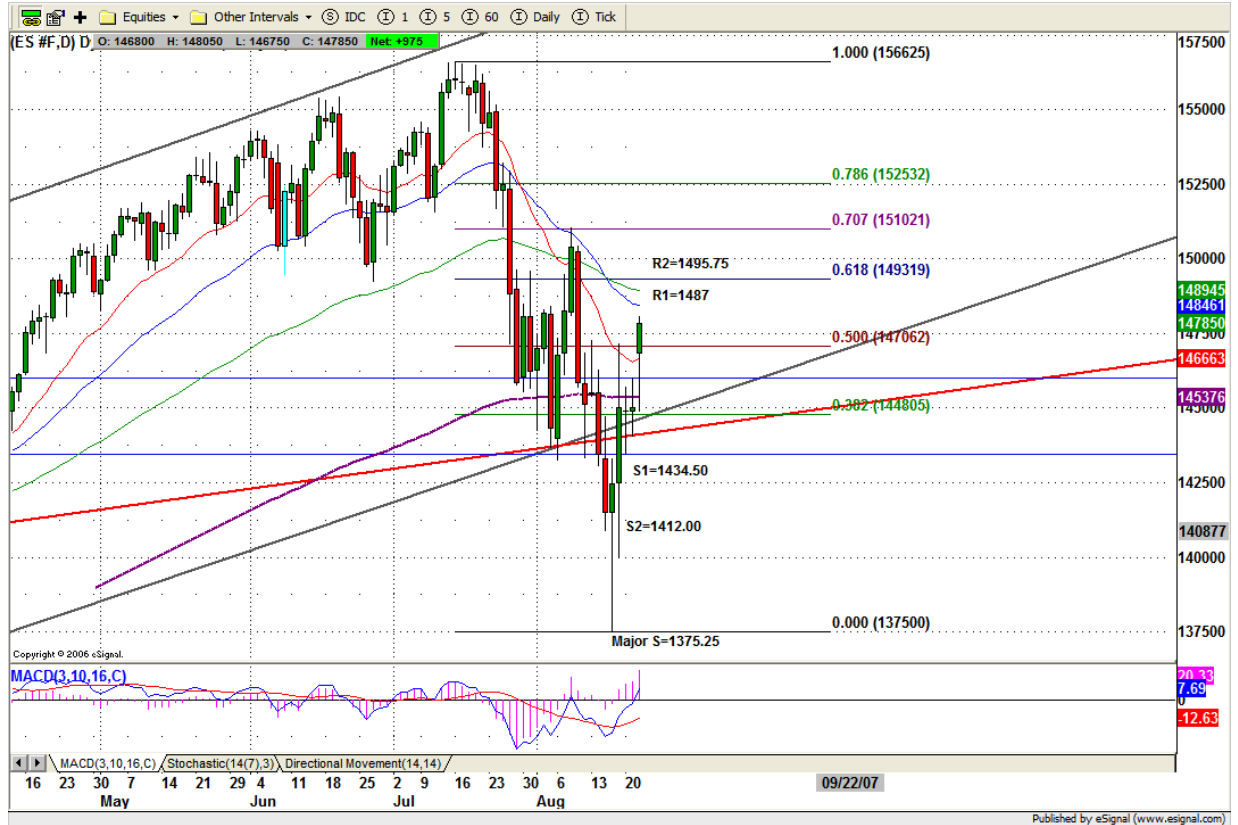
4. MAJOR RESISTANCE AND SUPPORT LEVELS FOR TODAY

Resistance	1479.25	1490.25	1495.00	1506.00	1530.25
Support	1464.25	1459.00	1449.25	1444.00	1432.25

5. DAILY OUTLOOK

ES broke out its consolidation range and hit its 1/2 breakout target @1468.50. Today it is possible for ES to complete its breakout final target @1479.50-80.75 range. if later ES can successfully breakout 1481.75 level, it is likely for ES to go higher to 1491.50-93.50 range.

ESU7 DAILY Chart



6. TRADING STRATEGY FOR Aug. 23, 2007

ES already had a big move due to Bank of America's news. This morning 1483.75-85 is key level. If ES can hold price under this range until 1pm, looking for a reversal signal. ES may go down in the afternoon.

If ES breakout 1483.75-85 in the morning session, and then it is possible for price to go up 1491-93 range for testing.

Intraday swing position entry on short side:
1484.75 (Scalping) 1495.75 (agg) and 1507.50 (cons)
Intraday swing position entry on long side:
1460.25 (scalping) 1451.25-50.75 (agg) and 1424.25 (cons)

ESU7 INTRADAY



7. PREDICTION FOR TODAY'S MOVEMENT

Current (interval=1.95)

1472.66	+2/8
1470.70	+1/8
1468.75	8/8
1466.80	7/8
1464.84	6/8
1462.89	5/8
1460.94	4/8
1458.98	3/8
1457.03	2/8
1455.08	1/8
1453.13	0/8
1451.17	-1/8
1449.22	-2/8

Up (Interval=3.90)

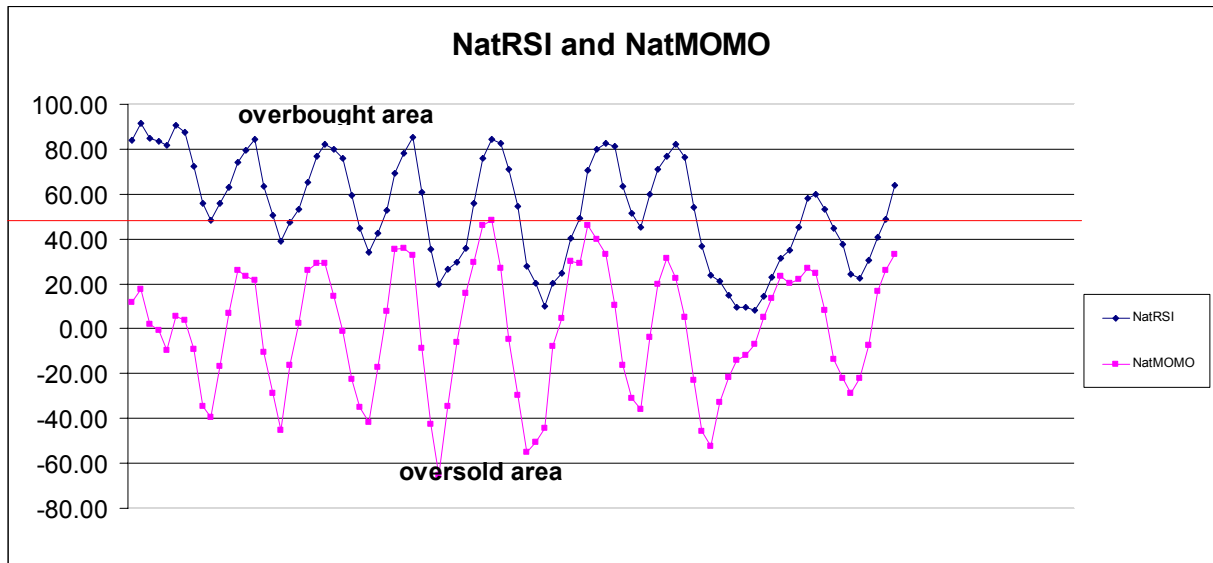
1492.19	+2/8
1488.28	+1/8
1484.38	8/8
1480.47	7/8
1476.56	6/8
1472.66	5/8
1468.75	4/8
1464.84	3/8
1460.94	2/8
1457.03	1/8
1453.13	0/8
1449.22	-1/8
1445.31	-2/8

Down (Interval=3.90)

1492.19	+2/8
1488.28	+1/8
1484.38	8/8
1480.47	7/8
1476.56	6/8
1472.66	5/8
1468.75	4/8
1464.84	3/8
1460.94	2/8
1457.03	1/8
1453.13	0/8
1449.22	-1/8
1445.31	-2/8

8. OTHER INDICATORS

NatRSI (1day)	NatRSI (5day)	NatMoMo	ATR 10	Waist number
0.75	0.63	33.29	30.83	1465.00
overbought	neutral			



9. WEEKLY ECONOMIC REPORTS (<http://www.tradethenews.com/weekly-calendar.php>)

Date	ET	Release	For	Actual	Briefing.com	Consensus	Prior
Aug 23	08:30	Initial Claims	08/18	NA	NA	NA	322K
Aug 24	08:30	Durable Orders	Jul	NA	1.0%	1.4%	
Aug 24	10:00	New Home Sales	Jul	NA	830K	834K	