



## Daily trading plan for Aug. 22, 2007

### 1. ESU7 IN PREVIOUS DAY

Open	High	Low	Closing
1447.75	1460.00	1443.25	1450.25

### 2. PIVOTS FOR ESU7

	Daily	Weekly	Monthly	Yearly
R3	1475.83	1588.17	1643.42	1722.00
R2	1467.92	1530.33	1604.83	1583.50
R1	1459.08	1490.17	1533.42	1506.00
<b>PPT</b>	<b>1451.17</b>	<b>1432.33</b>	<b>1494.83</b>	<b>1367.50</b>
S1	1442.33	1392.17	1423.42	1290.00
S2	1434.42	1334.33	1384.83	1151.50
S3	1425.58	1294.17	1313.42	1074.00

### 3. FOCUS NUMBERS (intra-day Position trading)

Sell levels	Buying levels
1467.75-68.75(First Sell#)	1435.25 (first Buy#)
1475.75(Second Sell#)	1424.25 (second Buy#)

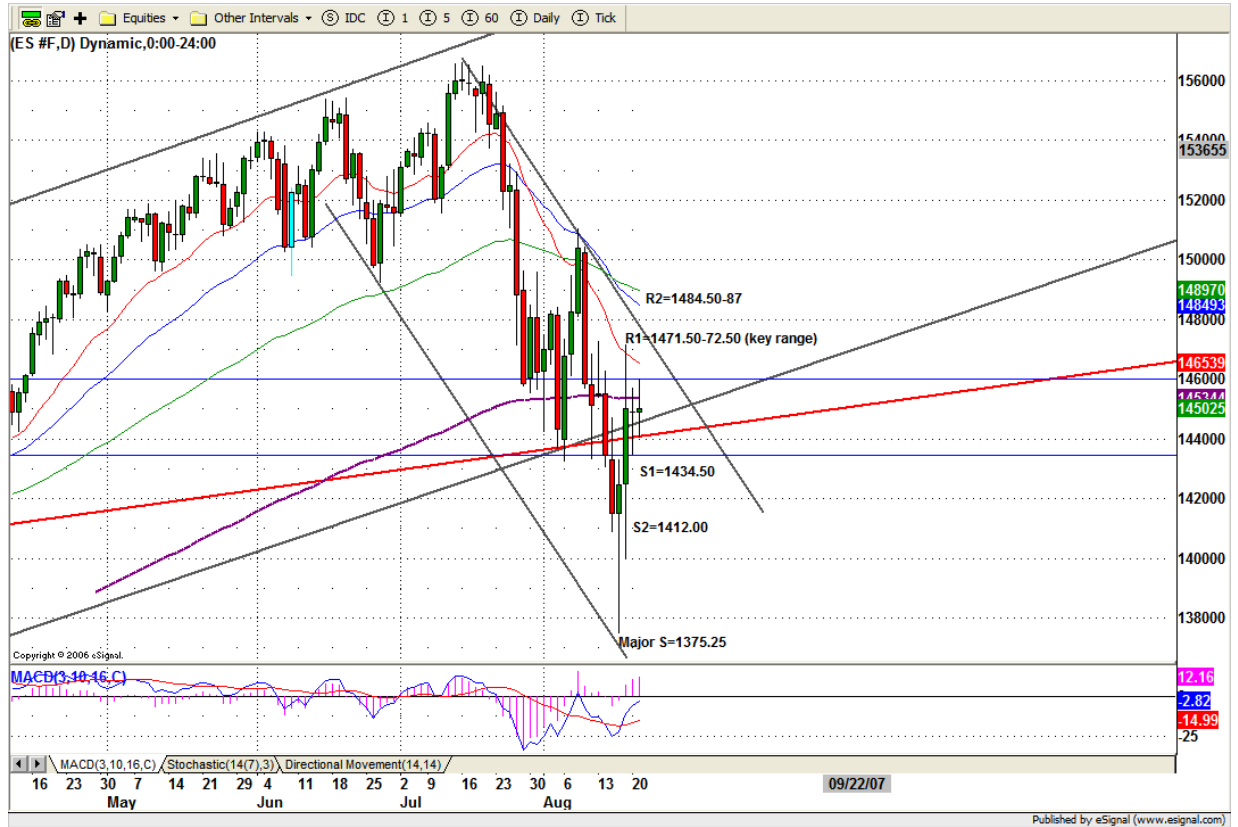
### 4. MAJOR RESISTANCE AND SUPPORT LEVELS FOR TODAY

<b>Resistance</b>	1460.25	1469.75	1479.50	1484.75	1490.25
<b>Support</b>	1440.25	1432.25	1423.50	1420.50	1407.50

## 5. DAILY OUTLOOK

Our market continues its consolidation and tried to decide which direction it should go. So far it is confused. Today we may still see ES go both sides and repeat yesterday's move. Be patient. Only time will tell. As long as ES doesn't close above 1453.50 bulls will lose confidence on their positions.

ESU7 DAILY Chart



## 6. TRADING STRATEGY FOR Aug. 21, 2007

Today morning, ES may go up to retest yesterday's high around 1460.25 area or make a fake move to 1465-68 range, then later, move sharply back down. But as long as price holds above 1448.25 level, ES still has a chance to go sideways. Breakdown 1448.25 level, it is likely for ES to down to retest yesterday's low around 1443-40 range.

Yesterday's thrust up and dump move should also be expected today

**Intraday swing position entry on short side:**  
**1468.25 (Scalping) 1475.25 (agg) and 1487.50 (cons)**  
**Intraday swing position entry on long side:**  
**1435.25 (scalping) 1423.25 (agg) and 1412.25 (cons)**

### ESU7 INTRADAY



## 7. PREDICTION FOR TODAY'S MOVEMENT

### Current (interval=1.95)

1464.84	+2/8
1462.89	+1/8
1460.94	8/8
1458.98	7/8
1457.03	6/8
1455.08	5/8
1453.13	4/8
1451.17	3/8
1449.22	2/8
1447.27	1/8
1445.31	0/8
1443.36	-1/8
1441.41	-2/8

### Up (Interval=3.90)

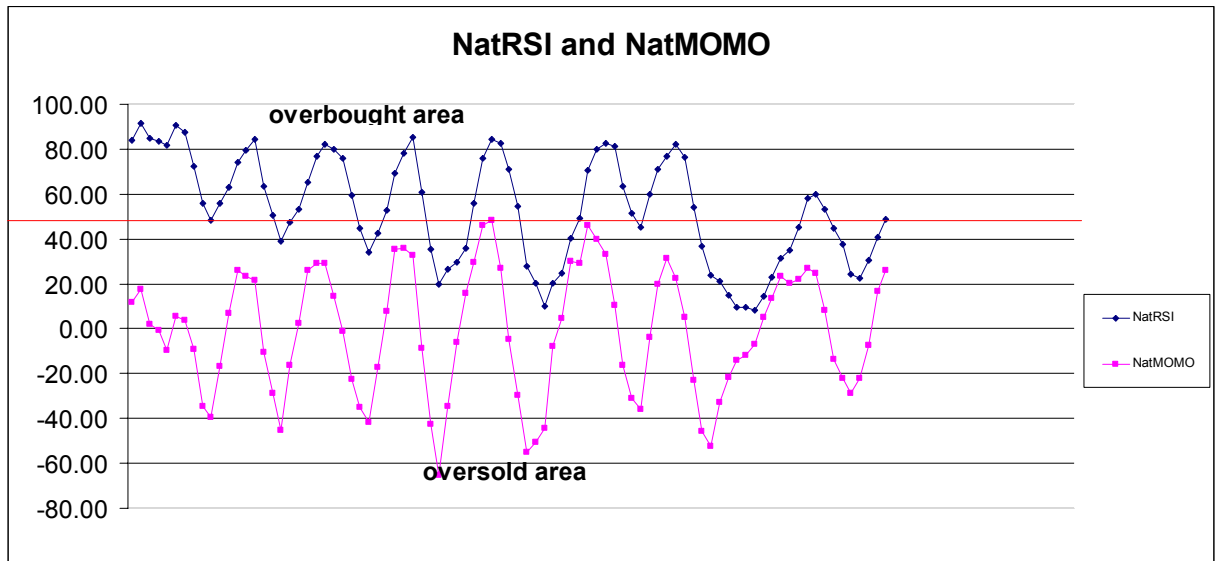
1476.56	+2/8
1472.66	+1/8
1468.75	8/8
1464.84	7/8
1460.94	6/8
1457.03	5/8
1453.13	4/8
1449.22	3/8
1445.31	2/8
1441.41	1/8
1437.50	0/8
1433.59	-1/8
1429.69	-2/8

### Down (Interval=7.82)

1515.63	+2/8
1507.81	+1/8
1500.00	8/8
1492.19	7/8
1484.38	6/8
1476.56	5/8
1468.75	4/8
1460.94	3/8
1453.13	2/8
1445.31	1/8
1437.50	0/8
1429.69	-1/8
1421.88	-2/8

## 8. OTHER INDICATORS

NatRSI (1day)	NatRSI (5day)	NatMoMo	ATR 10	Waist number
0.57	.48	26.01	32.02	1449.00
neutral	neutral			



## 9. WEEKLY ECONOMIC REPORTS (<http://www.tradethenews.com/weekly-calendar.php>)

Date	ET	Release	For	Actual	Briefing.com	Consensus	Prior
Aug 22	10:30	Crude Inventories	08/17	NA	NA	NA	-5167K
Aug 23	08:30	<a href="#">Initial Claims</a>	08/18	NA	NA	NA	322K
Aug 24	08:30	<a href="#">Durable Orders</a>	Jul	NA	1.0%	1.4%	
Aug 24	10:00	<a href="#">New Home Sales</a>	Jul	NA	830K	834K	