



## Daily trading plan for Aug. 21, 2007

### 1. ESU7 IN PREVIOUS DAY

Open	High	Low	Closing
1453.25	1456.75	1434.50	1449.00

### 2. PIVOTS FOR ESU7

	Daily	Weekly	Monthly	Yearly
R3	1481.25	1588.17	1643.42	1722.00
R2	1469.00	1530.33	1604.83	1583.50
R1	1459.00	1490.17	1533.42	1506.00
<b>PPT</b>	<b>1446.75</b>	<b>1432.33</b>	<b>1494.83</b>	<b>1367.50</b>
S1	1436.75	1392.17	1423.42	1290.00
S2	1424.50	1334.33	1384.83	1151.50
S3	1414.50	1294.17	1313.42	1074.00

### 3. FOCUS NUMBERS (intra-day Position trading)

Sell levels	Buying levels
1473.50 (First Sell#)	1418.25 (first Buy#)
1487.50(Second Sell#)	1406.75 (second Buy#)

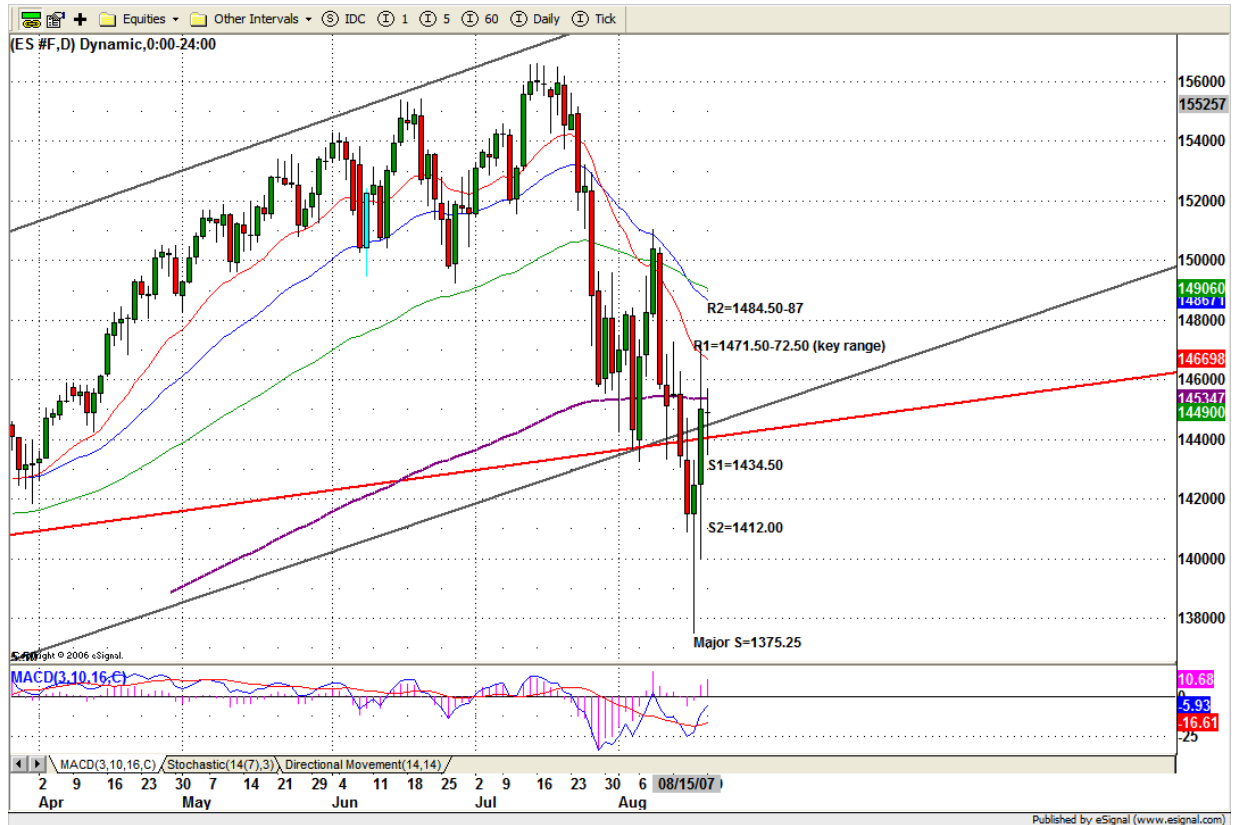
### 4. MAJOR RESISTANCE AND SUPPORT LEVELS FOR TODAY

<b>Resistance</b>	1459.25	1469.25	1481.75	1490.25	1495.25
<b>Support</b>	1436.75	1432.25	1424.50	1414.25	1406.25

## 5. DAILY OUTLOOK

Our market continues its consolidation and tried to smooth out imbalance of Demand and Supply created by last Friday. ES closed with almost no change and mainly no decision made. Today we still can see ES go both sides and continues struggling with 200 day moving average line. The longer ES fails to close above 1453.50, the more bulls will lose confidence.

ESU7 DAILY Chart



## 6. TRADING STRATEGY FOR Aug. 21, 2007

Today early morning, ES may go sideway again from 1445-1457 range. Breakout 1457, ES could go up to 1468.75 or higher to 1471-73.25 for testing last Friday's high. Breakdown 1434 level, it is likely for ES to down to fill last Friday's gap around 1424.50-23.25 range.

Upside movement indications are not very strong. There is a little divergence in the long timeframe. Thrust up and dump move should be expected today. In other words, high volatility move should be expected.

**Intraday swing position entry on short side:**  
**1468.25 (Scalping) 1479.50 (agg) and 1487.50 (cons)**  
**Intraday swing position entry on long side:**  
**1423.25 (scalping) 1412.00 (agg) and 1406.25 (cons)**

### ESU7 INTRADAY



## 7. PREDICTION FOR TODAY'S MOVEMENT

### Current (interval=1.95)

1457.03	+2/8
1455.08	+1/8
1453.13	8/8
1451.17	7/8
1449.22	6/8
1447.27	5/8
1445.31	4/8
1443.36	3/8
1441.41	2/8
1439.45	1/8
1437.50	0/8
1435.55	-1/8
1433.59	-2/8

### Up (Interval=7.82)

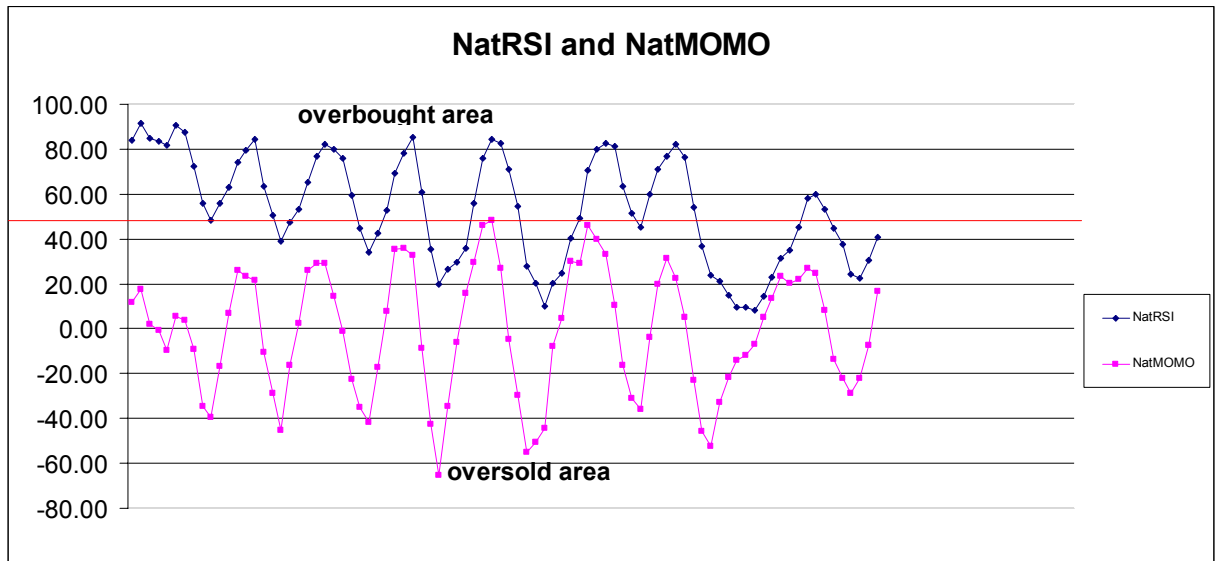
1515.63	+2/8
1507.81	+1/8
1500.00	8/8
1492.19	7/8
1484.38	6/8
1476.56	5/8
1468.75	4/8
1460.94	3/8
1453.13	2/8
1445.31	1/8
1437.50	0/8
1429.69	-1/8
1421.88	-2/8

### Down (Interval=7.82)

1484.38	+2/8
1476.56	+1/8
1468.75	8/8
1460.94	7/8
1453.13	6/8
1445.31	5/8
1437.50	4/8
1429.69	3/8
1421.88	2/8
1414.06	1/8
1406.25	0/8
1398.44	-1/8
1390.63	-2/8

## 8. OTHER INDICATORS

NatRSI (1day)	NatRSI (5day)	NatMoMo	ATR 10	Waist number
0.40	0.41	16.55	33.73	1451.13
neutral	neutral			



## 9. WEEKLY ECONOMIC REPORTS (<http://www.tradethenews.com/weekly-calendar.php>)

Date	ET	Release	For	Actual	Briefing.com	Consensus	Prior
Aug 22	10:30	Crude Inventories	08/17	NA	NA	NA	-5167K
Aug 23	08:30	<a href="#">Initial Claims</a>	08/18	NA	NA	NA	322K
Aug 24	08:30	<a href="#">Durable Orders</a>	Jul	NA	1.0%	1.4%	
Aug 24	10:00	<a href="#">New Home Sales</a>	Jul	NA	830K	834K	