



Daily trading plan for Aug.14, 2007

1. ESU7 IN PREVIOUS DAY

Open	High	Low	Closing
1468.75	1472.50	1453.50	1455.00

2. PIVOTS FOR ESU7

	Daily	Weekly	Monthly	Yearly
R3	1485.50	1575.17	1643.42	1722.00
R2	1479.00	1542.83	1604.83	1583.50
R1	1467.00	1496.92	1533.42	1506.00
PPT	1460.50	1464.58	1494.83	1367.50
S1	1448.50	1418.67	1423.42	1290.00
S2	1442.00	1386.33	1384.83	1151.50
S3	1430.00	1340.42	1313.42	1074.00

3. FOCUS NUMBERS (intra-day Position trading)

Sell levels	Buying levels
1472.50 (First Sell#)	1439.75 (first Buy#)
1484.25-1485.25 (Second Sell#)	1424-21.25 (second Buy#)

4. MAJOR RESISTANCE AND SUPPORT LEVELS FOR TODAY

Resistance	1464.50	1467.25	1472.50	1479.25	1486.25
Support	1448.25	1441.25	1429.25	1423.50	1418.75

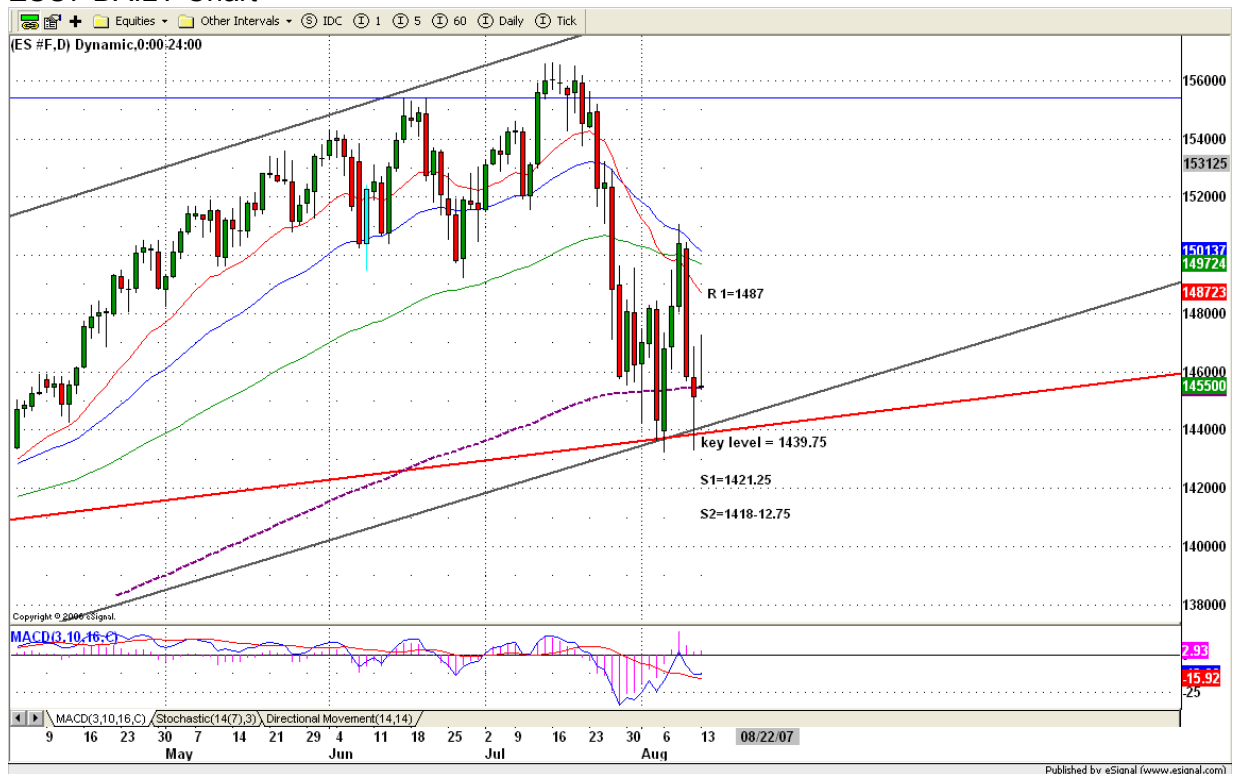
5. DAILY OUTLOOK

Our market has entered a major downtrend. This downtrend could last for many months. Any bounce will attract many sellers.

Yesterday we saw a strong gap up at open by ES, but at the end, ES gave most of gain. This could be related to option closing this week, but clearly investors are losing their confidence about our market.

ES will continue going down this morning until it finds out short-term support before it bounces up again for testing.

ESU7 DAILY Chart



6. TRADING STRATEGY FOR Aug. 14, 2007

BEARS control this market. Watch for the reaction to the release of the PPI and Core PPI numbers in the premarket. Later ES should continue its downside move until it finds its first support level around 1442-1439.area. If ES can hold this range in the early morning, it could bounce up to 1453-55 range for testing.

So far the option week battleline is 1450, Bulls fight for 1475 and Bears fight for 1430-25.

Intraday swing position entry on short side:
1465.75 (Scalping) 1472.75 (agg) and 1584.25 (cons)
Intraday swing position entry on long side:
1429.75 (scalping) 1421.25 (agg) and 1412.25 (cons)

ESU7 INTRADAY



7. PREDICTION FOR TODAY'S MOVEMENT

Current (interval=1.98)

1472.66	+2/8
1470.70	+1/8
1468.75	8/8
1466.80	7/8
1464.84	6/8
1462.89	5/8
1460.94	4/8
1458.98	3/8
1457.03	2/8
1455.08	1/8
1453.13	0/8
1451.17	-1/8
1449.22	-2/8

Up (Interval=3.91)

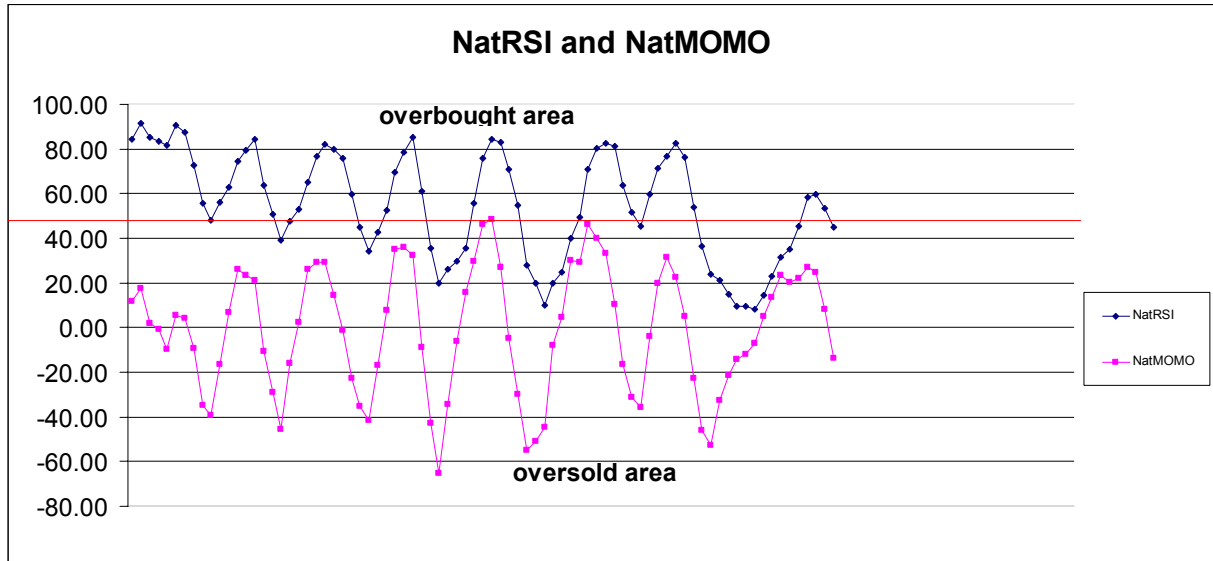
1492.19	+2/8
1488.28	+1/8
1484.38	8/8
1480.47	7/8
1476.56	6/8
1472.66	5/8
1468.75	4/8
1464.84	3/8
1460.94	2/8
1457.03	1/8
1453.13	0/8
1449.22	-1/8
1445.31	-2/8

Down (Interval=7.82)

1484.38	+2/8
1476.56	+1/8
1468.75	8/8
1460.94	7/8
1453.13	6/8
1445.31	5/8
1437.50	4/8
1429.69	3/8
1421.88	2/8
1414.06	1/8
1406.25	0/8
1398.44	-1/8
1390.63	-2/8

8. OTHER INDICATORS

NatRSI (1day)	NatRSI (5day)	NatMoMo	ATR 10	Waist number
0.14	0.44	-13.54	32.58	1461.88
oversold	neutral			



9. WEEKLY ECONOMIC REPORTS (<http://www.tradethenews.com/weekly-calendar.php>)

Date	ET	Release	For	Actual	Briefing.com	Consensus	Prior
Aug 14	08:30	PPI	Jul		0.1%	0.1%	-0.2%
Aug 14	08:30	Core PPI	Jul		0.1%	0.2%	0.3%
Aug 14	08:30	Trade Balance	Jun		-\$61.0B	-\$61.0B	-\$60.0B
Aug 15	08:30	CPI	Jul		0.2%	0.2%	0.2%
Aug 15	08:30	Core CPI	Jul		0.2%	0.2%	0.2%
Aug 15	08:30	NY Empire State Index	Aug		15.0	19.0	26.5
Aug 15	09:00	Net Foreign Purchases	Jun				\$126.1B
Aug 15	09:15	Industrial Production	Jul		0.3%	0.3%	0.5%
Aug 15	09:15	Capacity Utilization	Jul		81.8%	81.8%	81.7%
Aug 15	10:30	Crude Inventories	08/10		NA	NA	-4136K
Aug 16	08:30	Housing Starts	Jul		1415K	1410K	1467K
Aug 16	08:30	Building Permits	Jul		1420K	1400K	1413K
Aug 16	08:30	Initial Claims	08/11		310K	NA	316K
Aug 16	12:00	Philadelphia Fed	Aug		10.0	8.0	9.2
Aug 17	10:00	Mich Sentiment-Prel.	Aug		88.0	88.5	90.4