



Daily trading plan for Aug.10, 2007

1. ESU7 IN PREVIOUS DAY

Open	High	Low	Closing
1478.50	1493.50	1456.50	1458.00

2. PIVOTS FOR ESU7

	Daily	Weekly	Monthly	Yearly
R3	1519.17	1539.08	1643.42	1722.00
R2	1506.33	1517.17	1604.83	1583.50
R1	1482.25	1480.08	1533.42	1506.00
PPT	1469.33	1458.17	1494.83	1367.50
S1	1445.17	1421.08	1423.42	1290.00
S2	1432.33	1399.17	1384.83	1151.50
S3	1408.17	1362.08	1313.42	1074.00

3. FOCUS NUMBERS (intra-day Position trading)

Sell levels	Buying levels
1460.75(First Sell#)	1425.25-23.25 (first Buy#)
1489-90.75(Second Sell#)	1408.25 (second Buy#)

4. MAJOR RESISTANCE AND SUPPORT LEVELS FOR TODAY

Resistance	1459.50	1473.00	1480.25	1489.50	1494.25
Support	1441.50	1432.25	1425.00	1421.25	1408.25

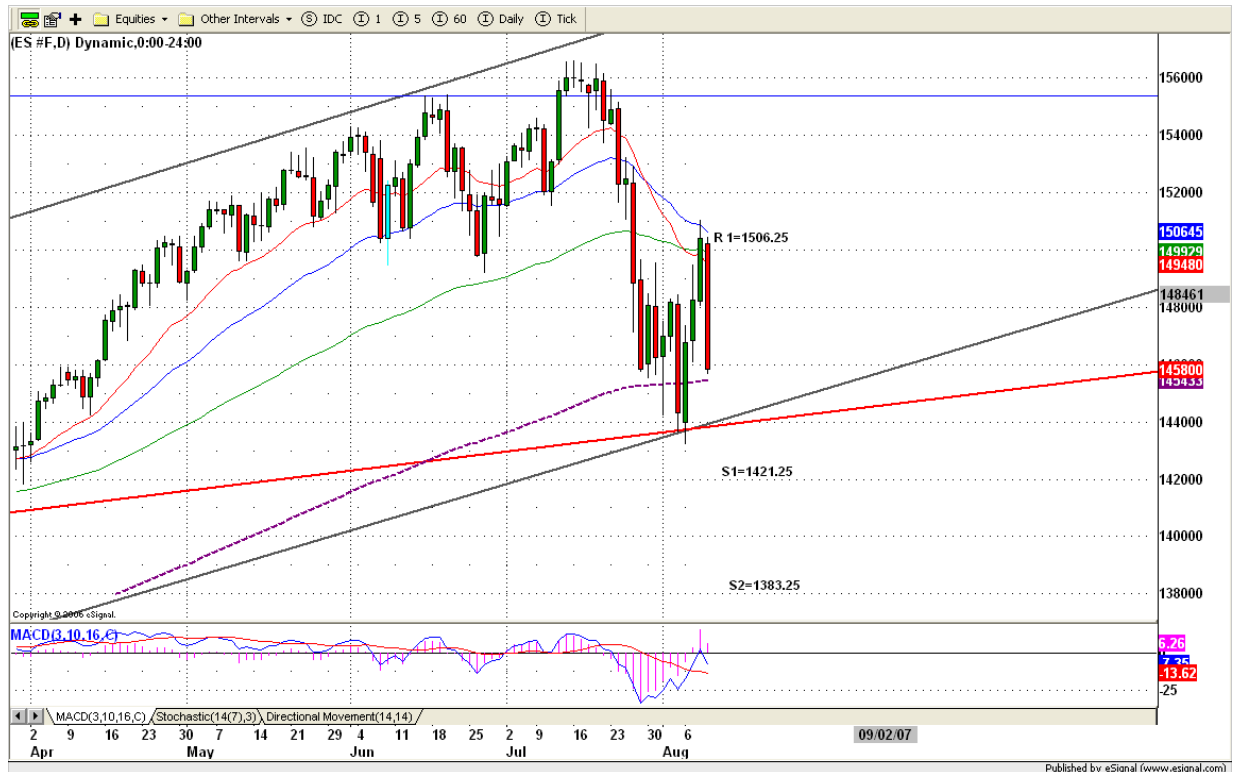
5. DAILY OUTLOOK

News of subprime hedge fund meltdowns hit this market one by one. It affects international markets. This could lead a whole world into recession. Our Markets will lead those international markets to the downside.

ES began its second impulse downside movement. Today 1439.75 is key. Breakdown this level, it will trigger the intermediate-term sell button and threaten the long-term uptrend.

Our second big down movement final target should be around 1376.25 level. We may not see it today, but as soon as 1439.75 fails to hold, that door is fully open for our bears.

ESU7 DAILY Chart



6. TRADING STRATEGY FOR Aug. 10, 2007

BEARS control this market. Today morning, ES should continue its downside move until it finds its support level. 1445-1439.75 is key range. If ES can hold this range in the early morning, it perhaps can bounce up to 1453-55 range or higher 1458-60.75 range for gap filled. And then it will turn back down again. No one wants to hold long positions into the weekend, period !!!.

Bear move again, we still use SHORT on BOUNCE strategy for today's trading.

Intraday swing position entry on short side:
1460.75 (Scalping) 1472.75 (agg) and 1584.25 (cons)
Intraday swing position entry on long side:
1429.75 (scalping) 1421.25 (agg) and 1408.25 (cons)

ESU7 INTRADAY



7. PREDICTION FOR TODAY'S MOVEMENT

Current (interval=7.82)

1515.63	+2/8
1507.81	+1/8
1500.00	8/8
1492.19	7/8
1484.38	6/8
1476.56	5/8
1468.75	4/8
1460.94	3/8
1453.13	2/8
1445.31	1/8
1437.50	0/8
1429.69	-1/8
1421.88	-2/8

Up (Interval=3.91)

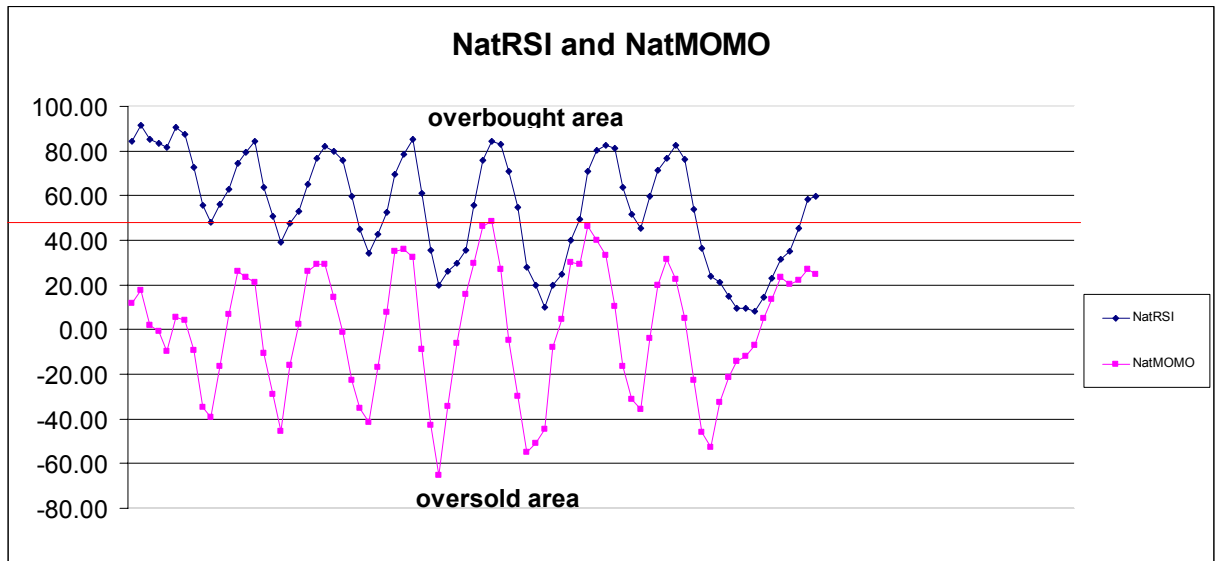
1492.19	+2/8
1488.28	+1/8
1484.38	8/8
1480.47	7/8
1476.56	6/8
1472.66	5/8
1468.75	4/8
1464.84	3/8
1460.94	2/8
1457.03	1/8
1453.13	0/8
1449.22	-1/8
1445.31	-2/8

Down (Interval=7.82)

1515.63	+2/8
1507.81	+1/8
1500.00	8/8
1492.19	7/8
1484.38	6/8
1476.56	5/8
1468.75	4/8
1460.94	3/8
1453.13	2/8
1445.31	1/8
1437.50	0/8
1429.69	-1/8
1421.88	-2/8

8. OTHER INDICATORS

NatRSI (1day)	NatRSI (5day)	NatMoMo	ATR 10	Waist number
0.22	0.60	24.91	33.18	1468.13
neutral	neutral			



9. WEEKLY ECONOMIC REPORTS (<http://www.tradethenews.com/weekly-calendar.php>)

Date	ET	Release	For	Actual	Briefing.com	Consensus	Prior
Aug 10	08:30	Export Prices ex-ag.	Jul		NA	NA	0.1%
Aug 10	08:30	Import Prices ex-oil	Jul		NA	NA	0.2%
Aug 10	14:00	Treasury Budget	Jul		-\$35.0B	-\$32.5B	-\$33.2B