



Daily trading plan for July 10, 2007

1. ESU7 IN PREVIOUS DAY

Open	High	Low	Closing
1518.50	1531.75	1516.00	1531.00

2. PIVOTS FOR ESU7

	Daily	Weekly	Monthly	Yearly
R3	1552.25	1574.00	1607.75	1722.00
R2	1542.00	1559.00	1581.00	1583.50
R1	1536.50	1550.75	1548.25	1506.00
PPT	1526.25	1535.75	1521.50	1367.50
S1	1520.75	1527.50	1488.75	1290.00
S2	1510.50	1512.50	1462.00	1151.50
S3	1505.00	1504.25	1429.25	1074.00

3. FOCUS NUMBERS (intra-day Position trading)

Sell levels	Buying levels
1535.75-37.75 (First Sell#)	1525.25 (first Buy#)
1545.25-47.25 (Second Sell#)	1516.50-14.50 (second Buy#)

4. MAJOR RESISTANCE AND SUPPORT LEVELS FOR TODAY

Resistance	1535.75	1538.25	1540.50	1542.50	1547.25
Support	1526.25	1520.50	1515.25	1512.50	1509.50

5. DAILY OUTLOOK

Our market remains in an up trend. It still intends to make new highs before an important TOP is established.

After yesterday's rally, even though ES still travels within a broad consolidation range from 1554 to 1494, the volume indicates ES still hasn't completed its last major upwave. It is possible to make a new high around 1574 level as soon as ES breakout 1545-47 range.

ESU7 DAILY Chart

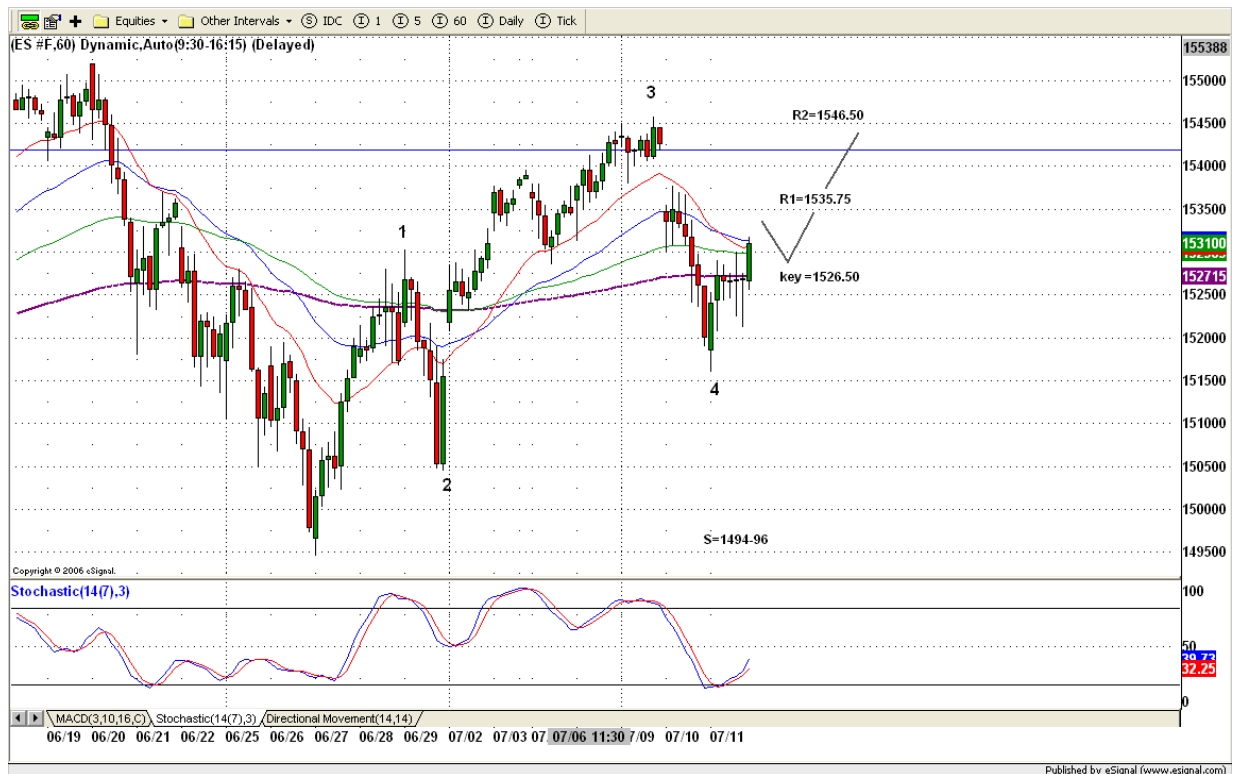


6. TRADING STRATEGY FOR July 12, 2007

ES found its major support level in the pre-market yesterday and made its momentum buying move. It squeezed all pre-market shorts in the last half hour trading and closed right on the high range. Today as long as 1528-30 can hold price up, more upside move to 1538-40.50 level should be expected. Looking for long entry in the early morning and looking for reversal move after 1:30pm.

Intraday swing position entry on short side:
1535.50-36.75 (agg) and 1539.75-42.50 (cons)
Intraday swing position entry on long side:
1525-26.75 (scalping) 1520.25(agg) and 1515.25-14.50(cons)

ESU7 INTRADAY



7. PREDICTION FOR TODAY'S MOVEMENT

Current (interval=1.95)

1535.16	+2/8
1533.20	+1/8
1531.25	8/8
1529.30	7/8
1527.34	6/8
1525.39	5/8
1523.44	4/8
1521.48	3/8
1519.53	2/8
1517.58	1/8
1515.63	0/8
1513.67	-1/8
1511.72	-2/8

Up (Interval=3.90)

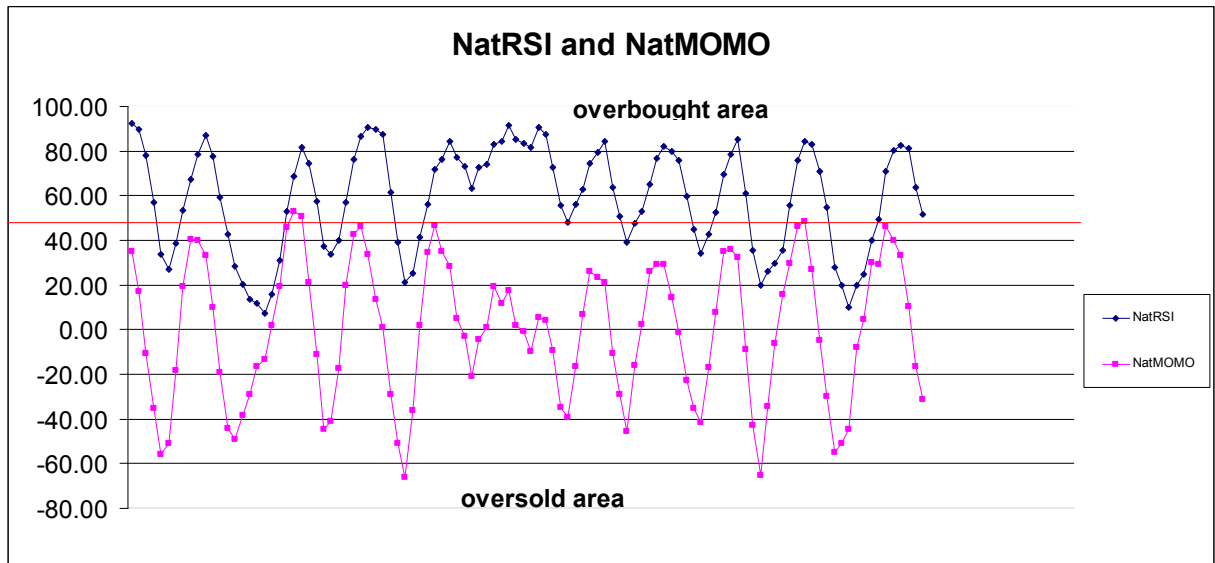
1570.31	+2/8
1566.41	+1/8
1562.50	8/8
1558.59	7/8
1554.69	6/8
1550.78	5/8
1546.88	4/8
1542.97	3/8
1539.06	2/8
1535.16	1/8
1531.25	0/8
1527.34	-1/8
1523.44	-2/8

Down (Interval=1.95)

1535.16	+2/8
1533.20	+1/8
1531.25	8/8
1529.30	7/8
1527.34	6/8
1525.39	5/8
1523.44	4/8
1521.48	3/8
1519.53	2/8
1517.58	1/8
1515.63	0/8
1513.67	-1/8
1511.72	-2/8

8. OTHER INDICATORS

NatRSI (1day)	NatRSI (5day)	NatMoMo	ATR 10	Waist number
0.89	0.52	-31.15	14.38	1524.75
overbought	neutral			



9. WEEKLY ECONOMIC REPORTS (<http://www.tradethenews.com/weekly-calendar.php>)

Projected Economic Releases for This Week

(Consensus Forecasts vs. Previous Report)

Jul 12

Initial Claims	8:30	07/07	NA vs 318K
Trade Balance	8:30	May	-\$60.0B vs -\$58.5B
Treasury Budget	14:00	Jun	\$31.0B vs \$20.5B

Jul 13

Export Prices ex-ag.	8:30	Jun	NA vs 0.2%
Import Prices ex-oil	8:30	Jun	NA vs 0.5%
Retail Sales	8:30	Jun	0.3% vs 1.4%
Retail Sales ex-auto	8:30	Jun	0.2% vs 1.3%
Business Inventories	10:00	May	0.3% vs 0.4%
Mich Sentiment-Prel.	10:00	Jul	86.0 vs 85.3