



Daily trading plan for July 5, 2007

1. ESU7 IN PREVIOUS DAY

Open	High	Low	Closing
1534.50	1537.75	1532.50	1536.25

2. PIVOTS FOR ESU7

	Daily	Weekly	Monthly	Yearly
R3	1543.75	1567.75	1607.75	1722.00
R2	1540.75	1549.00	1581.00	1583.50
R1	1538.50	1532.25	1548.25	1506.00
PPT	1535.50	1513.50	1521.50	1367.50
S1	1533.25	1496.75	1488.75	1290.00
S2	1530.25	1478.00	1462.00	1151.50
S3	1528.00	1461.25	1429.25	1074.00

3. FOCUS NUMBERS (intra-day Position trading)

Sell levels	Buying levels
1540-43.50 (First Sell#)	1520.50-21 (first Buy#)
1547.25-50.50 (Second Sell#)	1515.50-12.50 (second Buy#)

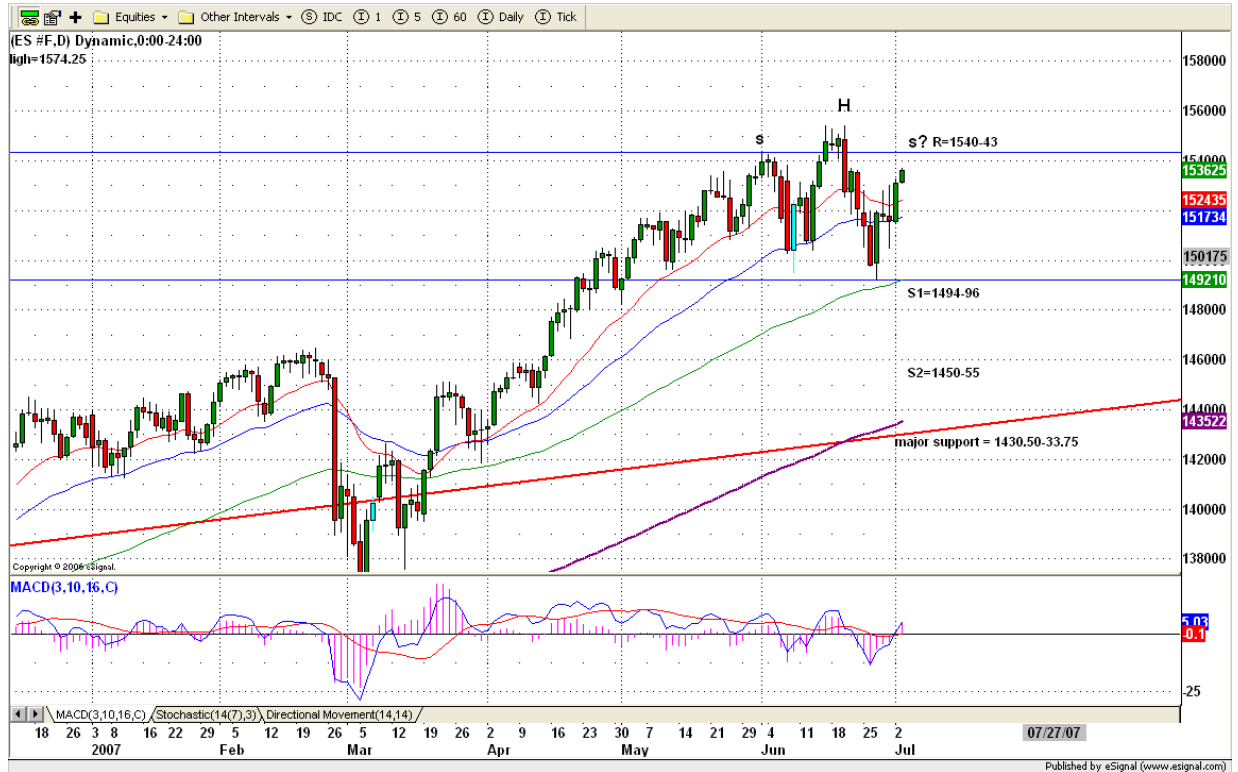
4. MAJOR RESISTANCE AND SUPPORT LEVELS FOR TODAY

Resistance	1537.75	1540.00	1546.25	1549.25	1554.00
Support	1528.00	1525.00	1520.50	1515.50	1512.50

5. DAILY OUTLOOK

Holiday is over. Welcome back all our traders. Due to the short session last Tuesday, we didn't see 1540 level. Today we may see it first before ES reverses from it. However any breakout 1543 level will break the decline move and could push price higher to 1550-54 range for retesting previous high.

ESU7 DAILY Chart



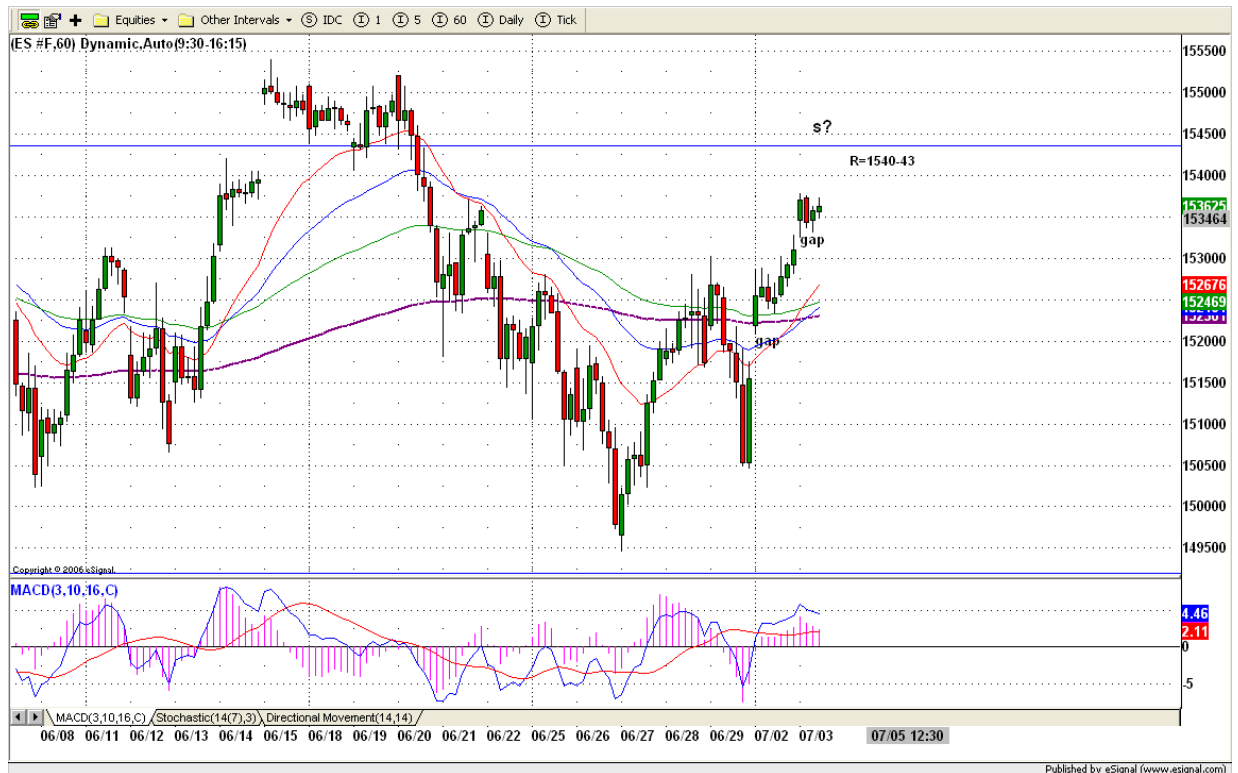
6. TRADING STRATEGY FOR July 5, 2007

ES made its second gap on Tuesday. There were two unfilled gaps (1531 and 1515.50). Whether today ES can fill those two gaps or not, depends on whether it can breakout 1543 level or not. Fail to breakout 1543 level and a move back below 1535 will bring bearish tone into this market.

We may see ES continues going up in early morning to complete bullish pattern around 1540-43 range and reverse down in the later afternoon.

Intraday swing position entry on short side:
1540 (scalping) and 1543.50-46 (agg) and 1551.75-54.25(cons)
Intraday swing position entry on long side:
1520.50 (scalping) 1515.00 (agg) and 1510.50(cons)

ESU7 INTRADAY



7. PREDICTION FOR TODAY'S MOVEMENT

Current (interval=0.95)

1541.02	+2/8
1540.04	+1/8
1539.06	8/8
1538.09	7/8
1537.11	6/8
1536.13	5/8
1535.16	4/8
1534.18	3/8
1533.20	2/8
1532.23	1/8
1531.25	0/8
1530.27	-1/8
1529.30	-2/8

Up (Interval=1.95)

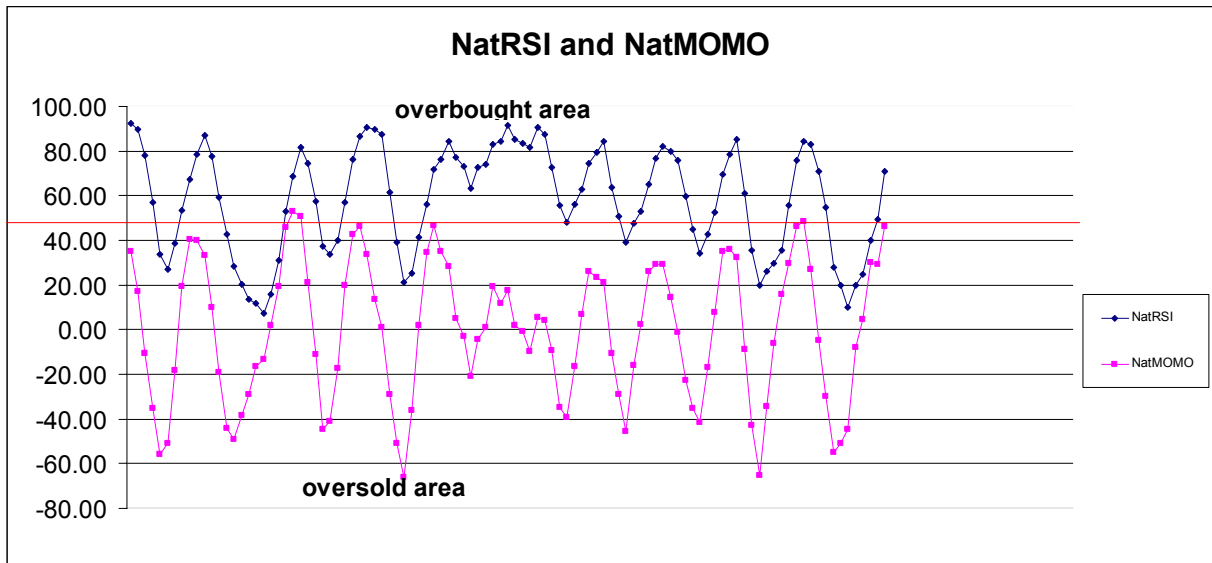
1550.78	+2/8
1548.83	+1/8
1546.88	8/8
1544.92	7/8
1542.97	6/8
1541.02	5/8
1539.06	4/8
1537.11	3/8
1535.16	2/8
1533.20	1/8
1531.25	0/8
1529.30	-1/8
1527.34	-2/8

Down (Interval=3.90)

1554.69	+2/8
1550.78	+1/8
1546.88	8/8
1542.97	7/8
1539.06	6/8
1535.16	5/8
1531.25	4/8
1527.34	3/8
1523.44	2/8
1519.53	1/8
1515.63	0/8
1511.72	-1/8
1507.81	-2/8

8. OTHER INDICATORS

NatRSI (1day)	NatRSI (5day)	NatMoMo	ATR 10	Waist number
0.66	0.70	46.07	19.00	1435.88
Neutral	Neutral			



9. WEEKLY ECONOMIC REPORTS (<http://www.tradethenews.com/weekly-calendar.php>)

Projected Economic Releases for This Week

(Consensus Forecasts vs. Previous Report)

Jul 5

Initial Claims	8:30	06/30	NA vs 313K
ISM Services	10:00	Jun	58.0 vs 59.7
Crude Inventories	10:30	06/29	NA vs 1562K

Jul 6

Nonfarm Payrolls	8:30	Jun	NA vs 157K
Unemployment Rate	8:30	Jun	NA vs 4.5%
Hourly Earnings	8:30	Jun	NA vs 0.3%
Average Workweek	8:30	Jun	NA vs 33.9