



Daily trading plan for June 22, 2007

1. ESU7 IN PREVIOUS DAY

Open	High	Low	Closing
1526.50	1537.00	1518.00	1535.75

2. PIVOTS FOR ESU7

	Daily	Weekly	Monthly	Yearly
R3	1561.50	1613.17	1609.00	1722.00
R2	1549.25	1583.58	1573.50	1583.50
R1	1542.50	1565.67	1553.25	1506.00
PPT	1530.25	1536.08	1517.75	1367.50
S1	1523.50	1518.17	1497.50	1290.00
S2	1511.50	1488.58	1462.00	1151.50
S3	1504.50	1470.67	1441.75	1074.00

3. FOCUS NUMBERS (intra-day Position trading)

Sell levels	Buying levels
1537.75-41.75 (First Sell#)	1518.25-16.25(first Buy#)
1554.50-55.25 (Second Sell#)	1503.25 (second Buy#)

4. MAJOR RESISTANCE AND SUPPORT LEVELS FOR TODAY

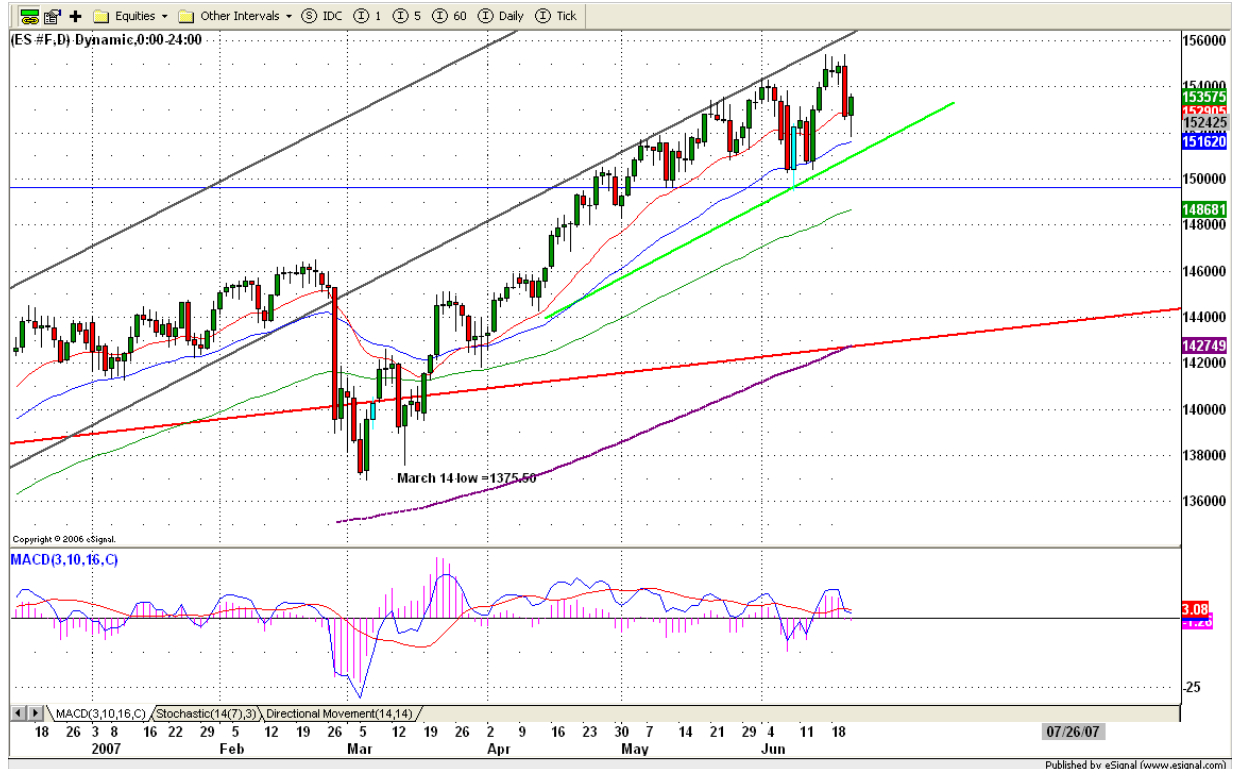
Resistance	1536.50	1538.25	1542.50	1545.75	1549.25
Support	1530.25	1526.25	1523.50	1517.25	1511.50

5. DAILY OUTLOOK

ES went down first to shake out overnight buyers and later bounced from its major support level sharply. Today we may see price go little higher to complete its bullish pattern around 1538 or further up to test last Wednesday's breakdown point 1540.50-42 range before it pulls back down again.

So far long term chart is not bearish. Daily moving average lines all hold the price up. As long as 1525.25-28.50 doesn't get breached, previous dip only was a minor correction.

ESU7 DAILY Chart



6. TRADING STRATEGY FOR June 21, 2007

Whether ES can continue going high and hold up yesterday's gain depend on today's closing price. Today ES needs to hold itself up above 1528.50-1525 range to avoid a further sell-off. Failure to hold this range will lead to more strong selling, especially in the afternoon.

Intraday swing position entry on short side:

1536.75-37.50 (scalping) and 1539.50-41.75 (agg) and 1554.75 (cons)

Intraday swing position entry on long side:

1528.50 (scalping) 1518.25-16.25 (agg) and 1505.25 (cons)

ESU7 INTRADAY



7. PREDICTION FOR TODAY'S MOVEMENT

Current (interval=3.90)

1539.06	+2/8
1535.16	+1/8
1531.25	8/8
1527.34	7/8
1523.44	6/8
1519.53	5/8
1515.63	4/8
1511.72	3/8
1507.81	2/8
1503.91	1/8
1500.00	0/8
1496.09	-1/8
1492.19	-2/8

Up (Interval=3.90)

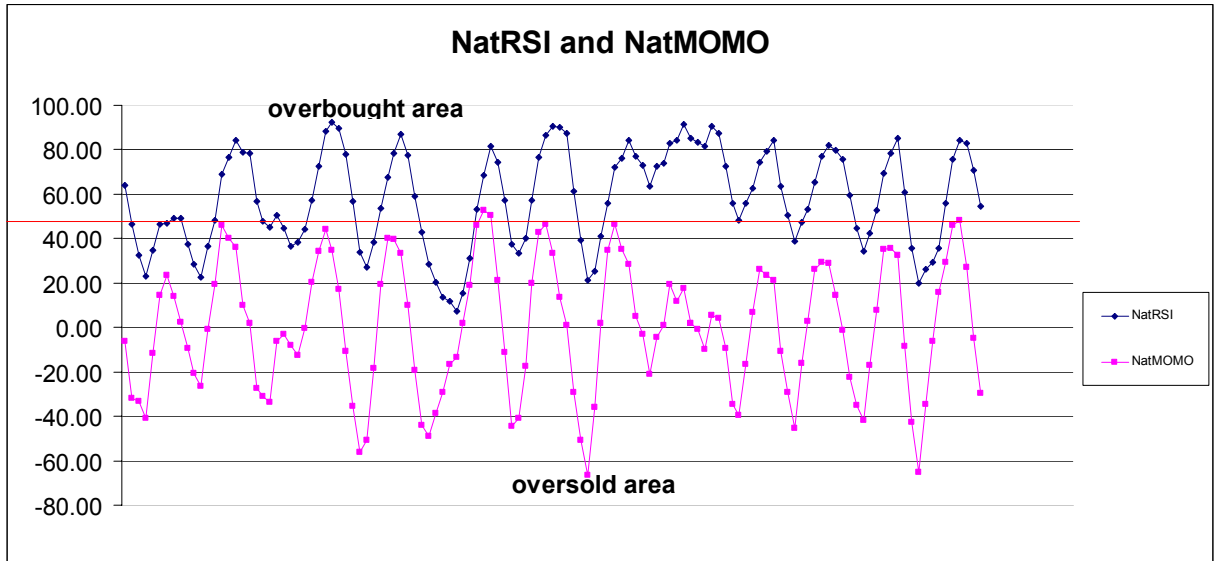
1570.31	+2/8
1566.41	+1/8
1562.50	8/8
1558.59	7/8
1554.69	6/8
1550.78	5/8
1546.88	4/8
1542.97	3/8
1539.06	2/8
1535.16	1/8
1531.25	0/8
1527.34	-1/8
1523.44	-2/8

Down (Interval=3.90)

1539.06	+2/8
1535.16	+1/8
1531.25	8/8
1527.34	7/8
1523.44	6/8
1519.53	5/8
1515.63	4/8
1511.72	3/8
1507.81	2/8
1503.91	1/8
1500.00	0/8
1496.09	-1/8
1492.19	-2/8

8. OTHER INDICATORS

NatRSI (1day)	NatRSI (5day)	NatMoMo	ATR 10	Waist number
0.74	0.54	-29.64	15.58	1531.13
overbought	neutral			



9. WEEKLY ECONOMIC REPORTS (<http://www.tradethenews.com/weekly-calendar.php>)