



Daily trading plan for June 13, 2007

1. ESU7 IN PREVIOUS DAY

Open	High	Low	Closing
1518.00	1527.00	1506.50	1507.50

2. PIVOTS FOR ESU7

	Daily	Weekly	Monthly	Yearly
R3	1540.92	1583.67	1609.00	1722.00
R2	1533.83	1563.33	1573.50	1583.50
R1	1520.67	1542.92	1553.25	1506.00
PPT	1513.58	1522.58	1517.75	1367.50
S1	1500.42	1502.17	1497.50	1290.00
S2	1493.33	1481.83	1462.00	1151.50
S3	1480.17	1461.42	1441.75	1074.00

3. FOCUS NUMBERS (intra-day Position trading)

Sell levels	Buying levels
1513.50-14.75(First Sell#)	1492.25 (first Buy#)
1524.50-25.75 (Second Sell#)	1477.75 (second Buy#)

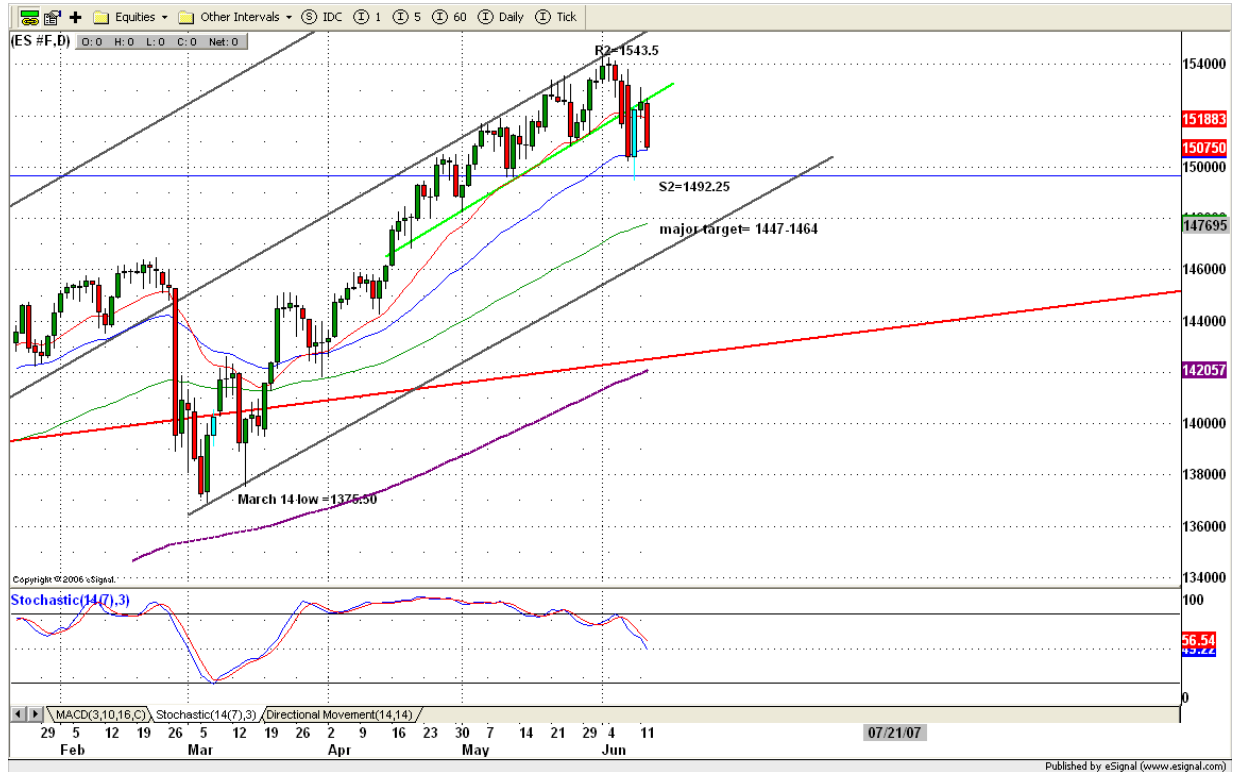
4. MAJOR RESISTANCE AND SUPPORT LEVELS FOR TODAY

Resistance	1513.50	1515.75	1520.75	1525.75	1529.75
Support	1500.25	1497.50	1494.25	1492.25	1489.25

5. DAILY OUTLOOK

All markets sold off again ahead of today Fed's Beige Book report. Mainly all fear the risk of an interest rate increase. Today we should see little further down and bounce later if Beige book shows no threats on interest rate. Nevertheless current trend is heading south. Daily Slow stochastic indicator still shows that there is lots of room to go down for ES.

ESM7 DAILY Chart



6. TRADING STRATEGY FOR June 13, 2007

ES had another strong down day with high volatility move. Today morning it is likely to see ES going down further if retail report is not good. 1513.50-1514.75 is major resistance. If ES bounces up 1513.50-14.75 range, we are still looking for short entry until ES finds its final major support level.

Intraday swing position entry on short side:

1513.50 (scalping) and 1516.75-19.75 (agg) and 1525.50-27.00(cons)

Intraday swing position entry on long side:

1494.75 (scalping) 1489.25 (agg) and 1484.25 (cons)

ESM7 INTRADAY



7. PREDICTION FOR TODAY'S MOVEMENT

Current (interval=1.95)

1527.34	+2/8
1525.39	+1/8
1523.44	8/8
1521.48	7/8
1519.53	6/8
1517.58	5/8
1515.63	4/8
1513.67	3/8
1511.72	2/8
1509.77	1/8
1507.81	0/8
1505.86	-1/8
1503.91	-2/8

Up (Interval=1.95)

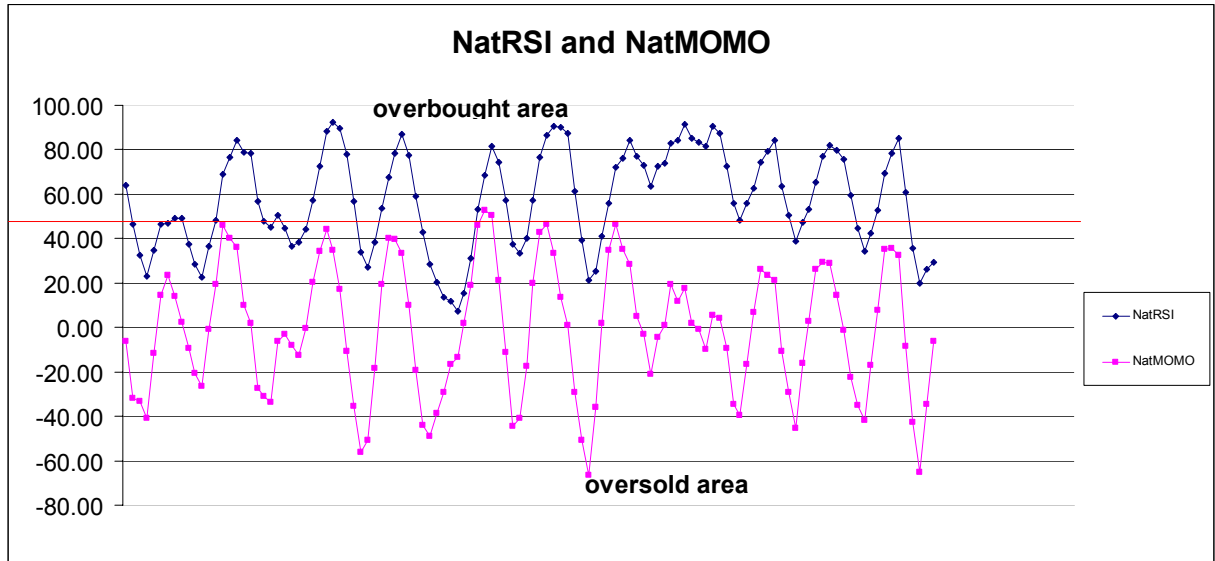
1527.34	+2/8
1525.39	+1/8
1523.44	8/8
1521.48	7/8
1519.53	6/8
1517.58	5/8
1515.63	4/8
1513.67	3/8
1511.72	2/8
1509.77	1/8
1507.81	0/8
1505.86	-1/8
1503.91	-2/8

Down (Interval=3.90)

1523.44	+2/8
1519.53	+1/8
1515.63	8/8
1511.72	7/8
1507.81	6/8
1503.91	5/8
1500.00	4/8
1496.09	3/8
1492.19	2/8
1488.28	1/8
1484.38	0/8
1480.47	-1/8
1476.56	-2/8

8. OTHER INDICATORS

NatRSI (1day)	NatRSI (5day)	NatMoMo	ATR 10	Waist number
0.24	0.29	-6.53	15.58	1512.75
neutral	neutral			



9. WEEKLY ECONOMIC REPORTS (<http://www.tradethenews.com/weekly-calendar.php>)

Projected Economic Releases for Next Week

(Consensus Forecasts vs. Previous Report)

Jun 13

Retail Sales	8:30	May	0.6% vs -0.2%
Retail Sales ex-auto	8:30	May	0.7% vs 0.0%
Business Inventories	10:00	Apr	0.2% VS -0.1%
Crude Inventories	10:30	06/08	NA VS 112K
Fed's Beige Book	14:00		

Jun 14

PPI	8:30	May	0.5% VS 0.7%
Core PPI	8:30	May	0.2% VS 0.0%

Jun 15

Current Account	8:30	Q1	-\$202.5B VS -\$195.8B
NY Empire State Index	8:30	Jun	10.0 VS 8.0
CPI	8:30	May	0.6% VS 0.4%
Core CPI	8:30	May	0.2% VS 0.2%

Net Foreign Purchases	9:00	Apr	NA VS \$67.6B
Industrial Production	9:15	May	0.1% VS 0.7%
Capacity Utilization	9:15	May	81.5% VS 81.6%
Mich Sentiment-Prel.	10:00	Jun	88.0 VS 88.3