



Daily trading plan for May 11, 2007

1. ESM7 IN PREVIOUS DAY

Open	High	Low	Closing
1511.00	1513.75	1496.00	1499.25

2. PIVOTS FOR ESM7

	Daily	Weekly	Monthly	Yearly
R3	1527.75	1559.83	1598.83	1722.00
R2	1520.75	1537.92	1551.67	1583.50
R1	1510.00	1526.08	1520.08	1506.00
PPT	1503.00	1504.17	1472.92	1367.50
S1	1492.25	1492.33	1441.33	1290.00
S2	1485.25	1470.42	1394.17	1151.50
S3	1474.50	1458.58	1362.58	1074.00

3. FOCUS NUMBERS (intra-day Position trading)

Sell levels	Buying levels
1508.25-09.25 (First Sell#)	1491.25(first Buy#)
1511.75-12.75 (Second Sell#)	1486.25-84.75(second Buy#)

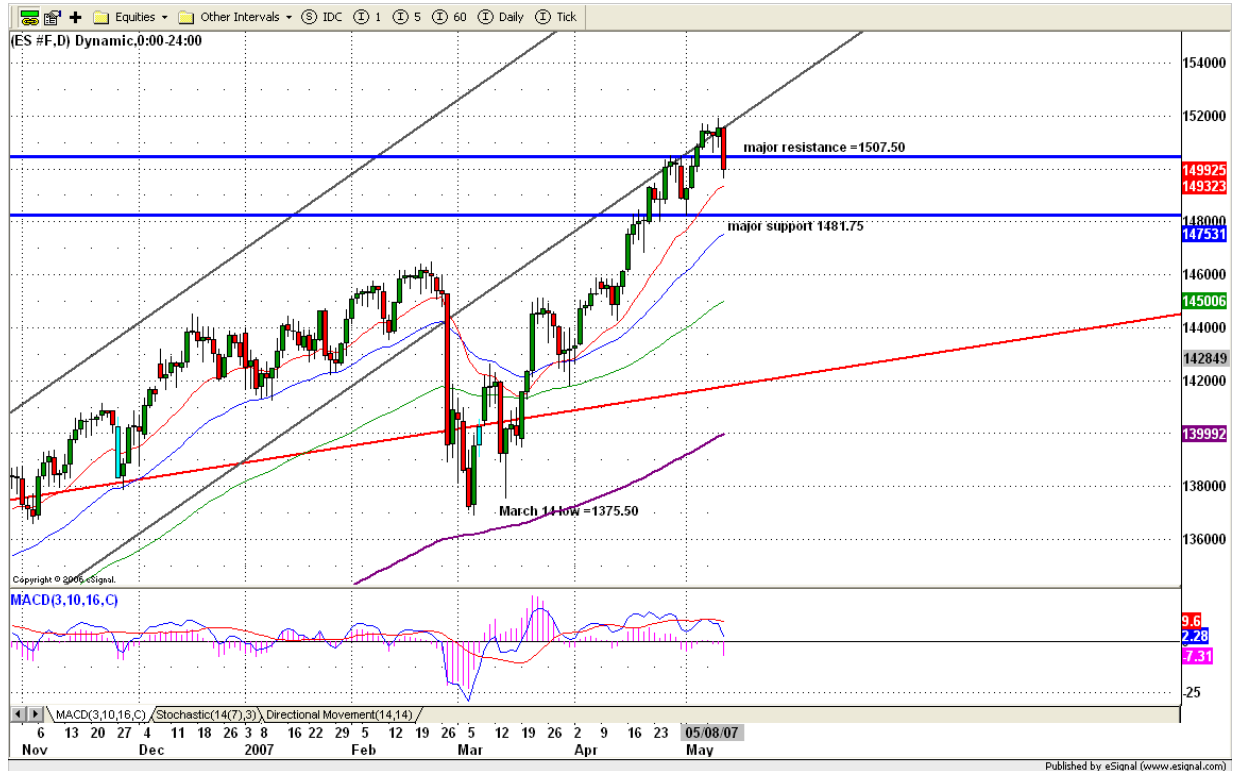
4. MAJOR RESISTANCE AND SUPPORT LEVELS FOR TODAY

Resistance	1503.75	1505.75	1507.75	1511.50	1513.25
Support	1495.75	1491.50	1486.50	1483.25	1477.25

5. DAILY OUTLOOK

After 25 days bullish move, all three major markets started their first day pullback. ES gave up 16.75 points but still closed above its 20-day moving average. Today 1493-91 range is important, movement below this line will be a strong signal that a decline is starting.

ESM7 DAILY Chart



6. TRADING STRATEGY FOR May 10, 2007

ES had a very strong trend day yesterday. Today after report, if price continues going down to 1493-91.25 range before open, Scalping long and target for 1499.25 level. If price goes up to 1505-07.50 level before open, that means we haven't seen the bottom yet, GO SHORT and target 1499.25 and 1496-95 level.

Intraday swing position entry on short side:
1504.75 (scalping) 1507.50-1508.25 (agg) and 1511.50-12.25 (cons)
Intraday swing position entry on long side:
1491-1490.25 (agg) and 1486-84.25 (cons)

ESM7 INTRADAY



7. PREDICTION FOR TODAY'S MOVEMENT

Current (interval=3.90)

1539.06	+2/8
1535.16	+1/8
1531.25	8/8
1527.34	7/8
1523.44	6/8
1519.53	5/8
1515.63	4/8
1511.72	3/8
1507.81	2/8
1503.91	1/8
1500.00	0/8
1496.09	-1/8
1492.19	-2/8

Up (Interval=1.95)

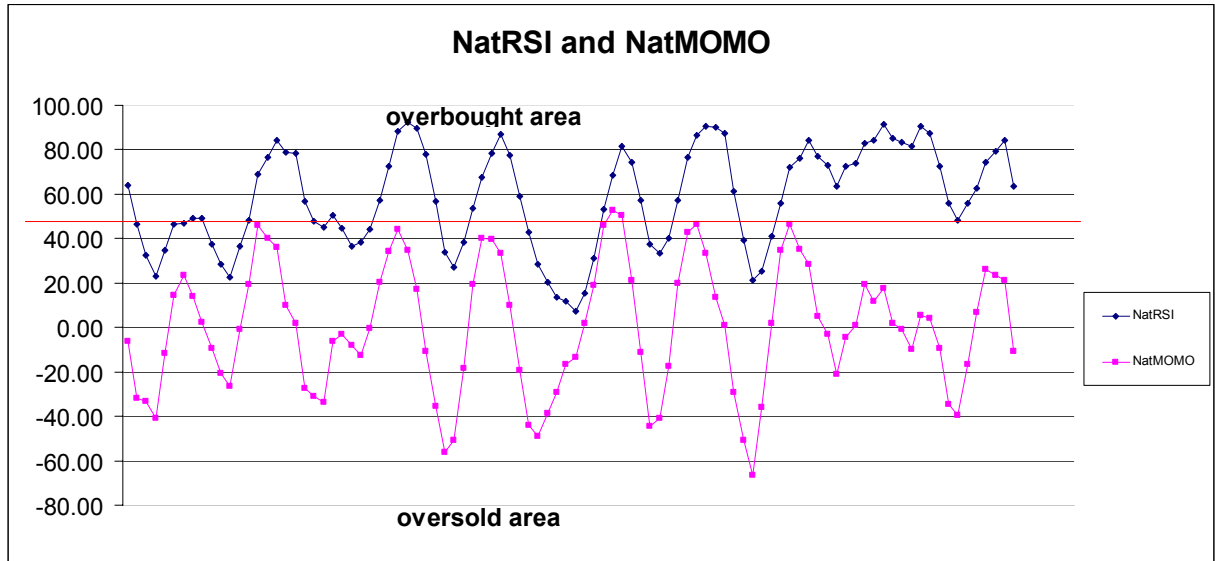
1511.72	+2/8
1509.77	+1/8
1507.81	8/8
1505.86	7/8
1503.91	6/8
1501.95	5/8
1500.00	4/8
1498.05	3/8
1496.09	2/8
1494.14	1/8
1492.19	0/8
1490.23	-1/8
1503.91	-2/8

Down (Interval=1.95)

1519.53	+2/8
1517.58	+1/8
1515.63	8/8
1513.67	7/8
1511.72	6/8
1509.77	5/8
1507.81	4/8
1505.86	3/8
1503.91	2/8
1501.95	1/8
1500.00	0/8
1498.05	-1/8
1496.09	-2/8

8. OTHER INDICATORS

NatRSI (1day)	NatRSI (5day)	NatMoMo	ATR 10	Waist number
0.16	0.63	-10.65	10.45	1505.13
oversold	neutral			



9. WEEKLY ECONOMIC REPORTS (<http://www.tradethenews.com/weekly-calendar.php>)

Projected Economic Releases for This Week

(Consensus Forecasts vs. Previous Report)

May 11

Core PPI	8:30	Apr	NA VS 0.0%
PPI	8:30	Apr	NA VS 1.0%
Retail Sales	8:30	Apr	0.4% VS 0.7%
Retail Sales ex-auto	8:30	Apr	NA VS 0.8%
Retail Sales ex-auto	8:30	Apr	0.4% VS 0.8%
PPI	8:30	Apr	0.6% VS 1.0%
Core PPI	8:30	Apr	0.2% VS 0.0%
Business Inventories	10:00	Mar	0.2% VS 0.3%