



## Daily trading plan for April 19, 2007

### 1. ESM7 IN PREVIOUS DAY

Open	High	Low	Closing
1474.00	1484.50	1473.50	1480.25

### 2. PIVOTS FOR ESM7

	Daily	Weekly	Monthly	Yearly
R3	1496.33	1487.42	1544.50	1722.00
R2	1490.42	1474.58	1497.75	1583.50
R1	1485.33	1467.92	1464.50	1506.00
<b>PPT</b>	<b>1479.42</b>	<b>1455.08</b>	<b>1417.75</b>	<b>1367.50</b>
S1	1474.33	1448.42	1384.50	1290.00
S2	1468.42	1435.58	1337.75	1151.50
S3	1463.33	1428.92	1304.50	1074.00

### 3. FOCUS NUMBERS (intra-day Position trading)

Sell levels	Buying levels
1484.50 (First Sell#)	1474.00 (first Buy#)
1489.25 (Second Sell#)	1468.75(second Buy#)

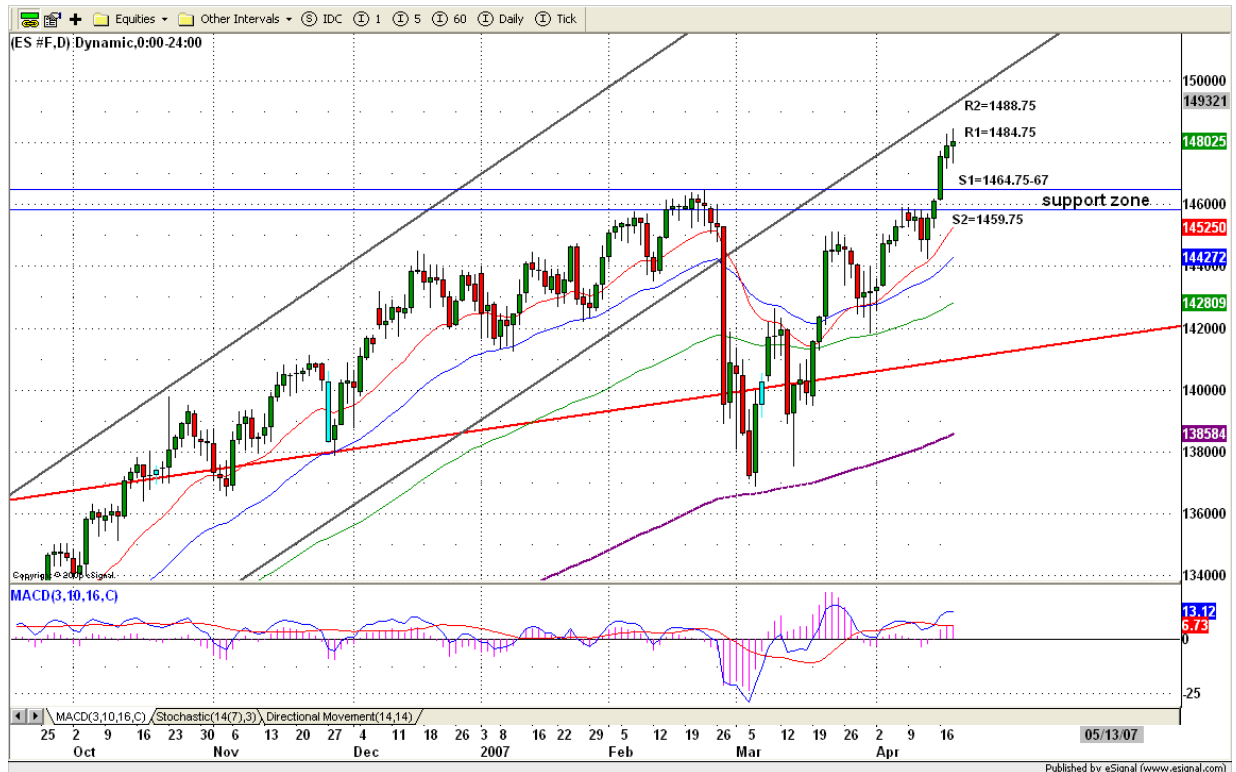
### 4. MAJOR RESISTANCE AND SUPPORT LEVELS FOR TODAY

<b>Resistance</b>	1485.50	1487.50	1490.50	1496.25	1497.75
<b>Support</b>	1474.25	1467.25	1464.25	1461.25	1455.00

## 5. DAILY OUTLOOK

Due to option expiration week, S&P 500 and ES tried to hold price up for the coming expiration day. Right now all three major markets show overbought condition, Today and tomorrow ES shouldn't exceed yesterday's high, if it does, it is likely to move higher to 1494-1501 range. If ES goes sideways for next two days, pullback should be expected in the following week.

### ESM7 DAILY Chart



## 6. TRADING STRATEGY FOR Apr. 19, 2007

ES made low first and later try to move up, but it was unable to hold its gain and closed at middle of trading range. Today small downside move still should be expected. As long as price holds above 1468 level, bulls retain their control. Any breakout of 1486 will push price higher to 1389-91 range. If ES breakdown 1476.50, we may see price retest yesterday's low or little lower to 1468.75 area.

**Intraday swing position entry on short side:**  
**1484.75 (scalping) 1489.75(agg) and 1494.75(cons)**  
**Intraday swing position entry on long side:**  
**1474 (scalping) 1470.25 (agg) and 1468.25 (cons)**

# ESM7 INTRADAY



## 7. PREDICTION FOR TODAY'S MOVEMENT

### Current (interval=1.95)

1488.28	+2/8
1486.33	+1/8
1484.38	8/8
1482.42	7/8
1480.47	6/8
1478.52	5/8
1476.56	4/8
1474.61	3/8
1472.66	2/8
1470.70	1/8
1468.75	0/8
1466.80	-1/8
1464.84	-2/8

### Up (Interval=1.95)

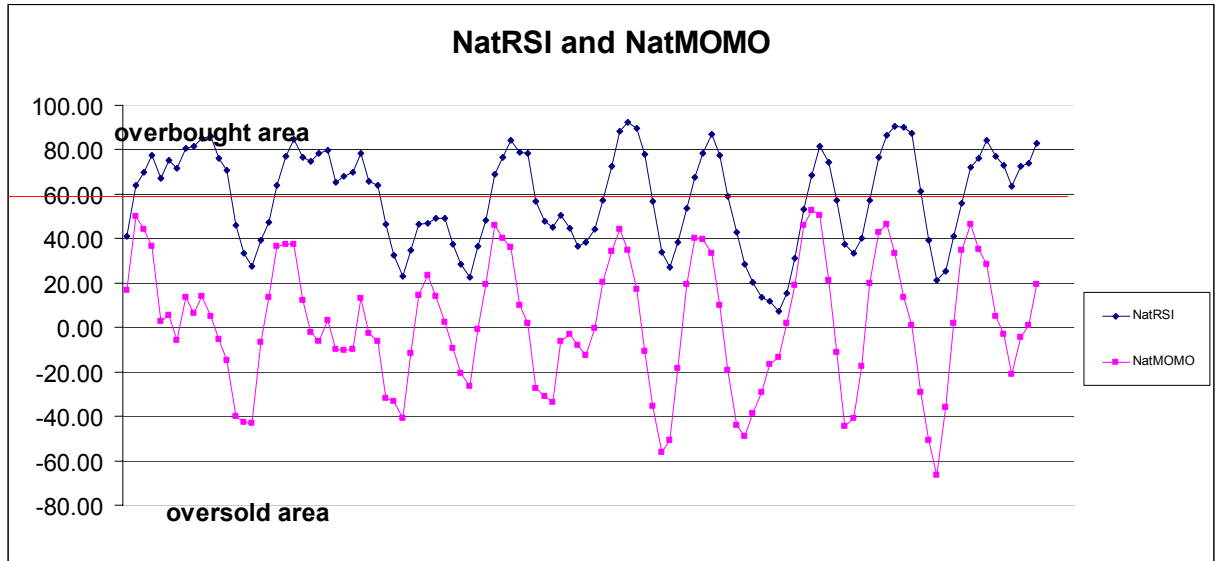
1496.09	+2/8
1494.14	+1/8
1492.19	8/8
1490.23	7/8
1488.28	6/8
1486.33	5/8
1484.38	4/8
1482.42	3/8
1480.47	2/8
1478.52	1/8
1476.56	0/8
1474.61	-1/8
1472.66	-2/8

### Down (Interval=1.95)

1488.28	+2/8
1486.33	+1/8
1484.38	8/8
1482.42	7/8
1480.47	6/8
1478.52	5/8
1476.56	4/8
1474.61	3/8
1472.66	2/8
1470.70	1/8
1468.75	0/8
1466.80	-1/8
1464.84	-2/8

## 8. OTHER INDICATORS

NatRSI (1day)	NatRSI (5day)	NatMoMo	ATR 10	Waist number
0.77	0.83	19.51	9.20	1477.13
overbought	overbought			



## 9. WEEKLY ECONOMIC REPORTS (<http://www.tradethenews.com/weekly-calendar.php>)

### Projected Economic Releases for This Week

(Consensus Forecasts vs. Previous Report)

Apr 19			
Initial Claims	8:30	04/14	NA vs 342K
Leading Indicators	10:00	Mar	0.1% vs -0.5%
Philadelphia Fed	12:00	Apr	3.0 vs 0.2