



Daily trading plan for April 5, 2007

1. ESM7 IN PREVIOUS DAY

Open	High	Low	Closing
1447.25	1450.00	1444.25	1448.50

2. PIVOTS FOR ESM7

	Daily	Weekly	Monthly	Yearly
R3	1456.67	1478.92	1544.50	1722.00
R2	1453.33	1464.08	1497.75	1583.50
R1	1450.92	1447.67	1464.50	1506.00
PPT	1447.58	1432.83	1417.75	1367.50
S1	1445.17	1416.42	1384.50	1290.00
S2	1441.83	1401.58	1337.75	1151.50
S3	1439.42	1385.17	1304.50	1074.00

3. FOCUS NUMBERS (intra-day Position trading)

Sell levels	Buying levels
1453.75 (First Sell#)	1440.75 (first Buy#)
1457.75 (Second Sell#)	1439.50 (second Buy#)

4. MAJOR RESISTANCE AND SUPPORT LEVELS FOR TODAY

Resistance	1453.75	1457.75	1464.25	1469.75	1474.75
Support	1445.75	1439.75	1433.25	1426.75	1421.50

5. MONTHLY AND WEEKLY OUTLOOK

Time passes very quickly. First quarter of 2007 trading ended last Friday. First quarter S&P 500 makes not much change with its yearly opening price. But it does give us an indication that S&P500 intends to have its correction move. This correction may be similar to the year 2004. We see March closed with little gain from last Feb, and the SPX was unable to breakout last January's high. Instead it made lower lows in past three months. We should expect more correction downside in the months ahead.

SPX MONTHLY Chart



The three major markets, Dow, S&P and Nasdaq, each ended the week down about 1% or more. Because March is the end of first quarter in 2007, we expected window dressing last week. This window dressing gives us an opportunity to anticipate price returning to the downtrend this week sometimes. If S&P 500 can initially hold price move up to 1438.89 (ES 1449-1451), the next down movement could be started from it very soon.

ES formed a short-term downside channel. This week Bear still has to fight for ES long term uptrend line around 1412-1406 in order to resume its downtrend. Due to Easter Holiday, we may also see price may traveled inside a triangle pattern this week

Weekly major resistance level is 1451 and support level is 1406.

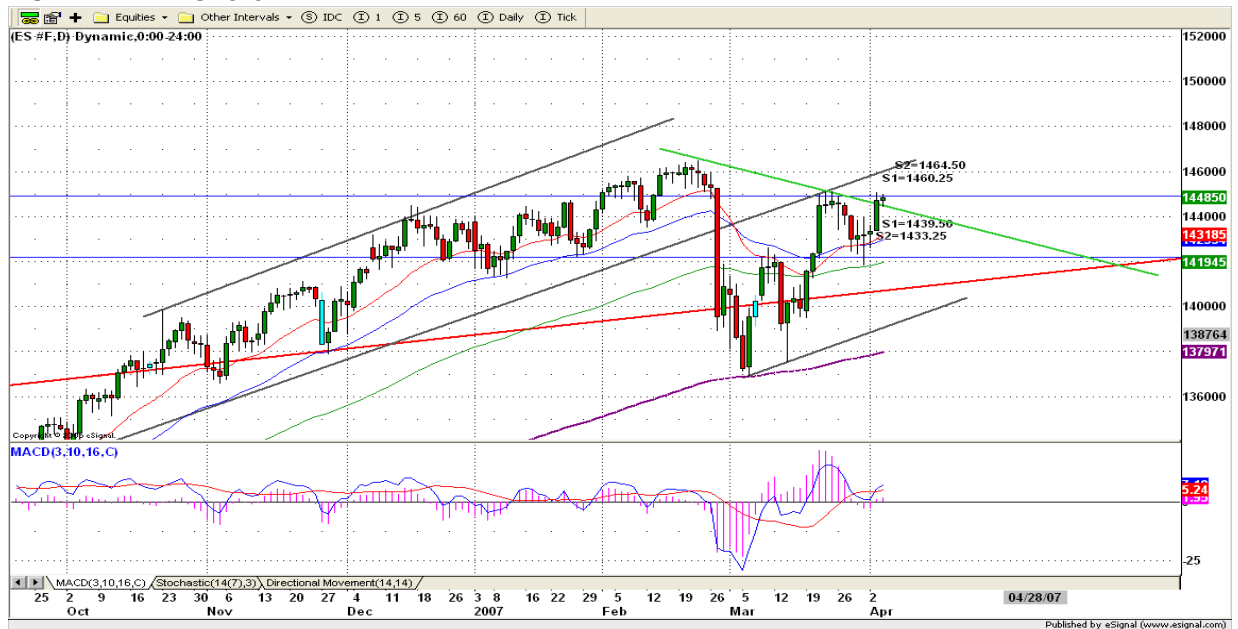
ES WEEKLY Chart



6. DAILY OUTLOOK

Holiday cheerful mode continues. Today is last trading day of this week due to Good Friday tomorrow. We could see that ES continues going sideways within yesterday's range. As soon as 1451 acts a solid resistance level, bears will fight for their territory until next week.

ESM7 DAILY Chart



8. PREDICTION FOR TODAY'S MOVEMENT

Current (interval=0.95)

1455.08	+2/8
1454.10	+1/8
1453.13	8/8
1452.15	7/8
1451.17	6/8
1450.20	5/8
1449.22	4/8
1448.24	3/8
1447.27	2/8
1446.29	1/8
1445.31	0/8
1444.34	-1/8
1443.36	-2/8

Up (Interval=1.95)

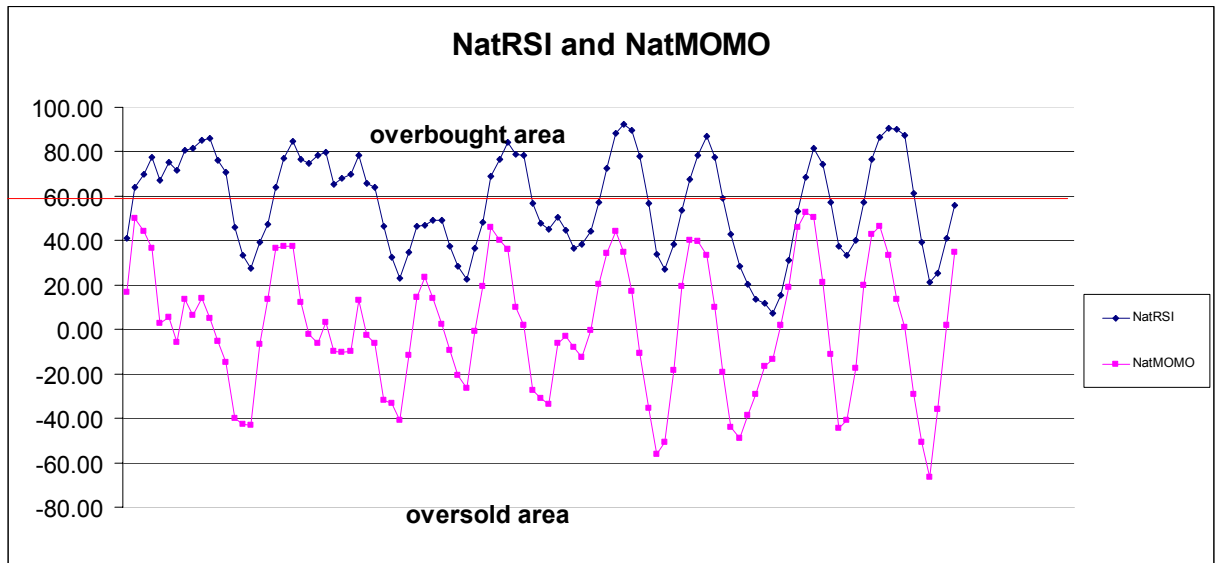
1464.84	+2/8
1462.89	+1/8
1460.94	8/8
1458.98	7/8
1457.03	6/8
1455.08	5/8
1453.13	4/8
1451.17	3/8
1449.22	2/8
1447.27	1/8
1445.31	0/8
1443.36	-1/8
1441.41	-2/8

Down (Interval=1.95)

1457.03	+2/8
1455.08	+1/8
1453.13	8/8
1451.17	7/8
1449.22	6/8
1447.27	5/8
1445.31	4/8
1443.36	3/8
1441.41	2/8
1439.45	1/8
1437.50	0/8
1435.55	-1/8
1433.59	-2/8

9. OTHER INDICATORS

NatRSI (1day)	NatRSI (5day)	NatMoMo	ATR 10	Waist number
0.61	0.56	34.84	11.38	1447.88
neutral	neutral			



10. WEEKLY ECONOMIC REPORTS (<http://www.tradethenews.com/weekly-calendar.php>)

Projected Economic Releases for This Week			
(Consensus Forecasts vs. Previous Report)			
Apr 5			
Initial Claims	8:30	03/31	NA vs 308K
Apr 6			
Nonfarm Payrolls	8:30	Mar	120K vs 97K
Unemployment Rate	8:30	Mar	4.6% vs 4.5%
Hourly Earnings	8:30	Mar	0.3% vs 0.4%
Average Workweek	8:30	Mar	33.8 vs 33.7
Wholesale Inventories	10:00	Feb	0.4% vs 0.7%
Consumer Credit	15:00	Feb	\$5.0B vs \$6.4B