



## Daily trading plan for April 3, 2007

### 1. ESM7 IN PREVIOUS DAY

Open	High	Low	Closing
1432.75	1436.00	1425.75	1433.25

### 2. PIVOTS FOR ESM7

	Daily	Weekly	Monthly	Yearly
R3	1447.83	1478.92	1544.50	1722.00
R2	1441.92	1464.08	1497.75	1583.50
R1	1437.58	1447.67	1464.50	1506.00
<b>PPT</b>	<b>1431.67</b>	<b>1432.83</b>	<b>1417.75</b>	<b>1367.50</b>
S1	1427.33	1416.42	1384.50	1290.00
S2	1421.42	1401.58	1337.75	1151.50
S3	1417.08	1385.17	1304.50	1074.00

### 3. FOCUS NUMBERS (intra-day Position trading)

Sell levels	Buying levels
1441.25 (First Sell#)	1420.25-1418 (first Buy#)
1448.75 (Second Sell#)	1413.25-12 (second Buy#)

### 4. MAJOR RESISTANCE AND SUPPORT LEVELS FOR TODAY

<b>Resistance</b>	1437.75	1439.75	1441.75	1443.75	1445.75
<b>Support</b>	1428.75	1427.75	1421.25	1417.75	1415.50

## 5. MONTHLY AND WEEKLY OUTLOOK

Time passes very quickly. First quarter of 2007 trading ended last Friday. First quarter S&P 500 makes not much change with its yearly opening price. But it does give us an indication that S&P500 intends to have its correction move. This correction may be similar to the year 2004. We see March closed with little gain from last Feb, and the SPX was unable to breakout last January's high. Instead it made lower lows in past three months. We should expect more correction downside in the months ahead.

### SPX MONTHLY Chart



The three major markets, Dow, S&P and Nasdaq, each ended the week down about 1% or more. Because March is the end of first quarter in 2007, we expected window dressing last week. This window dressing gives us an opportunity to anticipate price returning to the downtrend this week sometimes. If S&P 500 can initially hold price above 1438.89 (ES 1449-1451), the next down movement could be on the way soon.

ES formed a short-term downside channel. This week Bear still has to fight for ES long term uptrend line around 1412-1406 in order to resume its downtrend. Due to Easter Holiday, we may also see price may traveled inside a triangle pattern this week

Weekly major resistance level is 1451 and support level is 1406.

## ES WEEKLY Chart

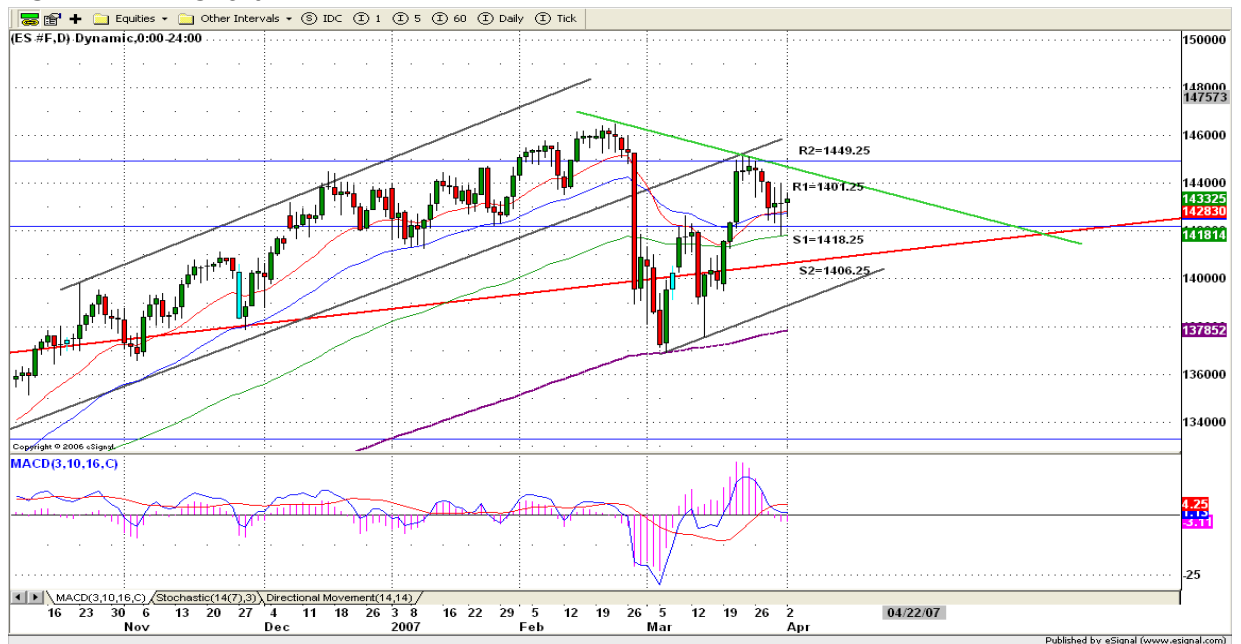


## 6. DAILY OUTLOOK

ES went sideways and gained 2 points from last Friday's closing with light volume. Due to the coming holidays, we may see price hang around current level for more than 2 days. Sideway or little higher to 1445 should be expected this week.

ES is in short term oversold situation, it needs time to work out that oversold condition.

## ESM7 DAILY Chart



## 7. TRADING STRATEGY FOR Apr. 3, 2007

ES went down first and moved up for higher closing yesterday. Today we may see price continue going higher if early morning 1432 level holds. This morning, if price gaps above 1436 level, we may see that the upside momentum picks up and pushes price higher to 1441.25 (first scalping short entry). If ES gaps down or goes low first, we need to look for support level around 1429.75-30 area or next support level around 1427-26 area for scalping long.

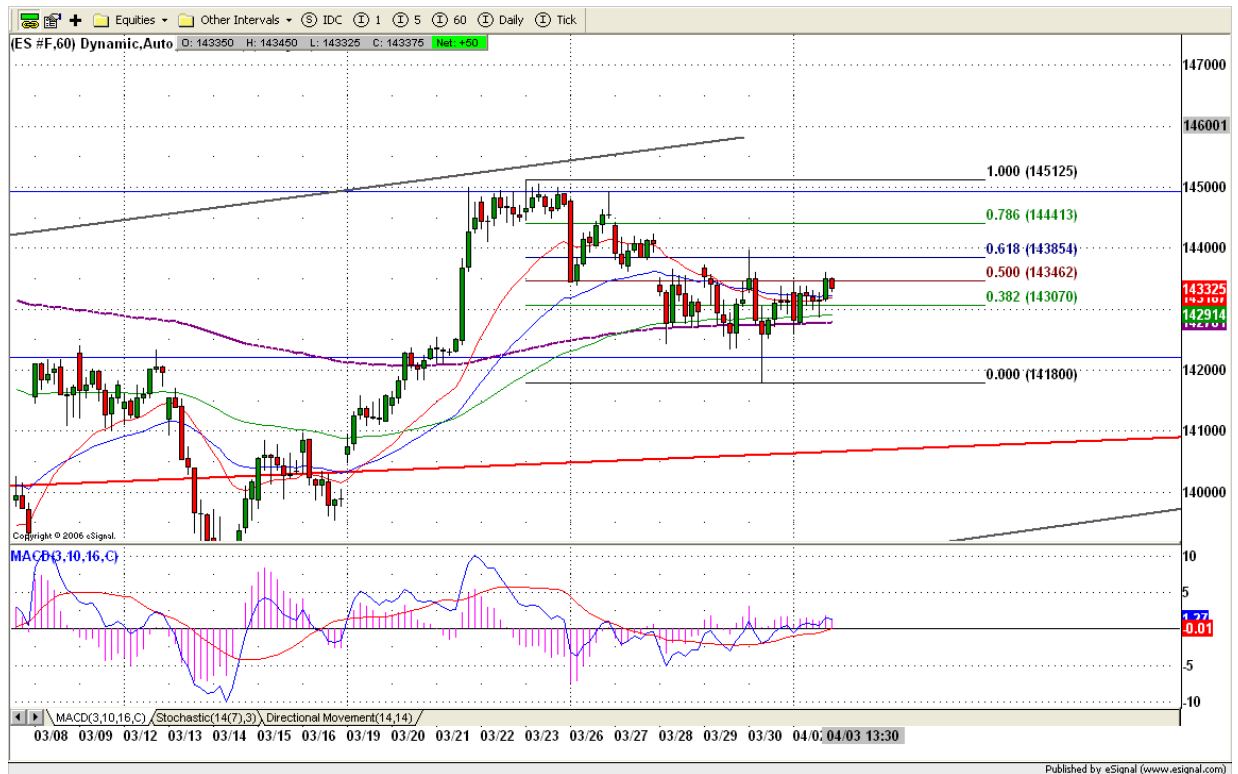
**Intraday swing position entry on short side:**

**1441.25 (scalping) 1445.00 (agg) and 1448.25(cons)**

**Intraday swing position entry on long side:**

**1425.75 (scalping) 1420.75-21.75 (agg) and 1417.25 (cons)**

### ESM7 INTRADAY



## 8. PREDICTION FOR TODAY'S MOVEMENT

### Current (interval=1.95)

1441.41	+2/8
1439.45	+1/8
1437.50	8/8
1435.55	7/8
1433.59	6/8
1431.64	5/8
1429.69	4/8
1427.73	3/8
1425.78	2/8
1423.83	1/8
1421.88	0/8
1419.92	-1/8
1417.97	-2/8

### Up (Interval=3.90)

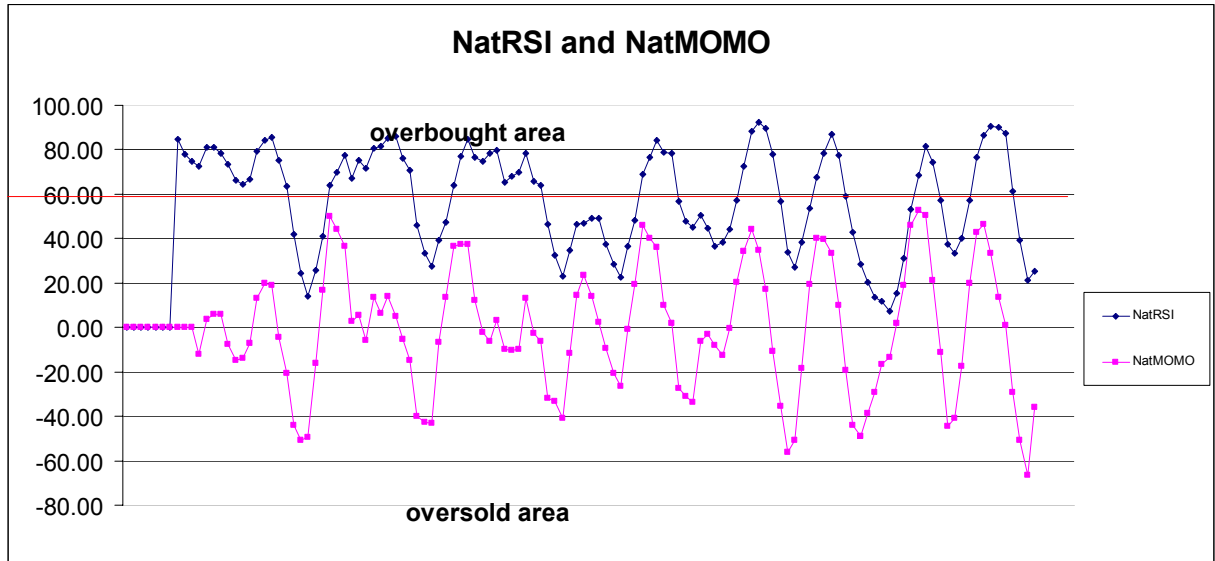
1460.94	+2/8
1457.03	+1/8
1453.13	8/8
1449.22	7/8
1445.31	6/8
1441.41	5/8
1437.50	4/8
1433.59	3/8
1429.69	2/8
1425.78	1/8
1421.88	0/8
1417.97	-1/8
1414.06	-2/8

### Down (Interval=3.90)

1445.31	+2/8
1441.41	+1/8
1437.50	8/8
1433.59	7/8
1429.69	6/8
1425.78	5/8
1421.88	4/8
1417.97	3/8
1414.06	2/8
1410.16	1/8
1406.25	0/8
1402.34	-1/8
1398.44	-2/8

## 9. OTHER INDICATORS

NatRSI (1day)	NatRSI (5day)	NatMoMo	ATR 10	Waist number
0.52	0.25	-36.32	13.73	1433
neutral	neutral			



## 10. WEEKLY ECONOMIC REPORTS (<http://www.tradethenews.com/weekly-calendar.php>)

### Projected Economic Releases for This Week

(Consensus Forecasts vs. Previous Report)

#### Apr 3

Auto Sales	17:00	Mar	5.1M vs 5.1M
Truck Sales	17:00	Mar	7.6M vs 7.7M

#### Apr 4

Factory Orders	10:00	Feb	2.0% vs -5.6%
ISM Services	10:00	Mar	54.7 vs 54.3
Crude Inventories	10:00	03/30	NA vs -846K

#### Apr 5

Initial Claims	8:30	03/31	NA vs 308K
----------------	------	-------	------------

#### Apr 6

Nonfarm Payrolls	8:30	Mar	120K vs 97K
Unemployment Rate	8:30	Mar	4.6% vs 4.5%
Hourly Earnings	8:30	Mar	0.3% vs 0.4%
Average Workweek	8:30	Mar	33.8 vs 33.7
Wholesale Inventories	10:00	Feb	0.4% vs 0.7%
Consumer Credit	15:00	Feb	\$5.0B vs \$6.4B